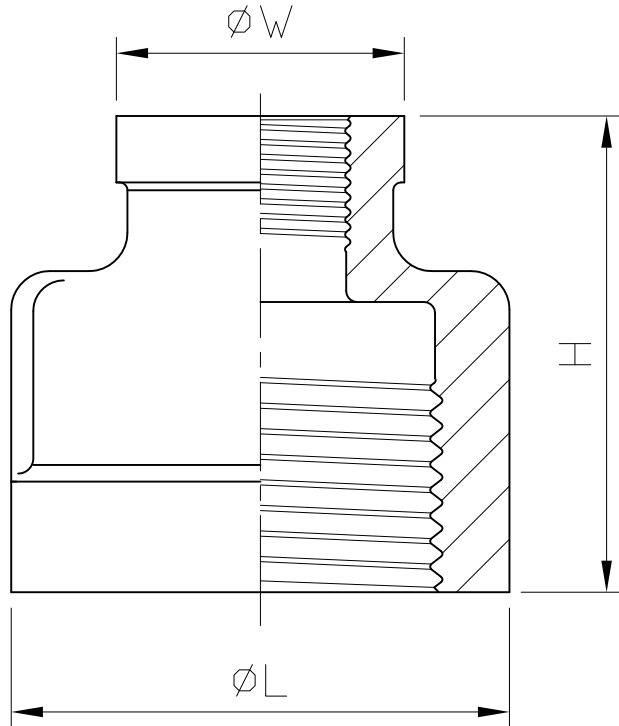


# REDUCING SOCKET



SIZE		L		H		W	
		mm	in	mm	in	mm	in
1/4"	1/8"	18	0.71	24	0.94	15.5	0.61
	3/8"	22	0.87	29	1.14	18.1	0.71
3/8"	1/8"	22	0.87	29	1.14	18.2	0.72
	1/4"	28	1.1	34	1.34	19.5	0.77
1/2"	1/8"	28.5	1.12	34	1.34	19.5	0.77
	1/4"	28.5	1.12	34.5	1.36	23	0.91
3/4"	1/8"	34	1.34	34.5	1.36	18.5	0.73
	1/4"	34	1.34	34.5	1.36	18.5	0.73
1"	3/8"	34	1.34	36.5	1.44	28.2	1.11
	1/2"	34	1.34	36.5	1.44	28	1.1
1-1/4"	1/8"	41.5	1.63	40	1.57	19.5	0.77
	1/4"	41.5	1.63	40	1.57	19.5	0.77
1"	3/8"	41.5	1.63	41.5	1.63	28.5	1.12
	1/2"	41.5	1.63	42	1.65	29	1.14
3/4"	1/8"	41.5	1.63	41.5	1.63	34	1.34
	1/4"	50.5	1.99	42	1.65	22	0.87
1-1/4"	1/8"	50.5	1.99	42	1.65	22	0.87
	1/4"	50.5	1.99	42	1.65	22	0.87
3/8"	1/8"	50	1.97	46	1.81	33.7	1.33
	1/4"	50	1.97	46	1.81	34	1.34
1"	1/8"	50	1.97	47	1.85	41.6	1.64
	1/4"	57.5	2.26	43.5	1.71	22	0.87
1-1/2"	1/8"	57.5	2.26	43.5	1.71	22	0.87
	3/8"	57.5	2.26	43.5	1.71	22	0.87

SIZE		L		H		W	
		mm	in	mm	in	mm	in
1-1/2"	1/2"	57	2.24	47	1.85	33.6	1.32
	3/4"	57.5	2.26	47.5	1.87	34	1.34
	1"	57	2.24	50	1.97	41.5	1.63
2"	1-1/4"	57	2.24	51.5	2.03	50	1.97
	1/4"	70	2.76	51	2.01	28.5	1.12
	3/8"	71	2.8	51	2.01	28.5	1.12
2"	1/2"	70	2.76	51	2.01	28.5	1.12
	3/4"	69.5	2.74	55	2.17	41	1.61
	1"	69.5	2.74	55	2.17	41	1.61
2-1/2"	1-1/4"	70	2.76	59	2.32	56.5	2.22
	1-1/2"	70	2.76	59	2.32	57	2.24
	2"	88	3.46	59.5	2.34	50	1.97
3"	1-1/4"	88	3.46	59.5	2.34	50	1.97
	1-1/2"	88	3.46	61	2.4	57	2.24
	2"	87	3.43	61	2.4	69.5	2.74
4"	3/4"	101	3.98	61.5	2.42	41.5	1.63
	1"	101	3.98	61.5	2.42	41.5	1.63
	1-1/4"	103	4.06	65.5	2.58	50.5	1.99
3"	1-1/2"	103	4.06	65	2.56	57	2.24
	2"	103	4.06	65	2.56	73.5	2.89
	2-1/2"	102	4.02	70.5	2.78	88.5	3.48
4"	2"	128.5	5.06	66	2.6	72.5	2.85
	2-1/2"	128.5	5.06	71	2.8	88	3.46
	3"	130	5.12	77	3.03	102	4.02

Tolerance:  $\pm 0.5\text{mm}$ (1/8"~2")  
 $\pm 0.8\text{mm}$ (2-1/2"~4")

HAITIMA CORPORATION  
 P.O. BOX 34-36 TAIPEI  
 Tel:+886-2-26585800

E-mail: haitima@seednet.tw  
 www.haitima.com.tw  
 TAIWAN R.O.C.  
 F.o.x:+886-2-26582266

GENERAL TOLERANCE  
 0.5-5  $\pm 0.1$   
 6-30  $\pm 0.2$   
 31-120  $\pm 0.3$   
 121-320  $\pm 0.5$   
 321-1000  $\pm 0.8$



HAITIMA CORPORATION  
 Ball Valves & Pipe Fittings

CHECK BY: DRAWING BY: DATE: SPECIFICATION: Reducing Socket

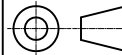
Dune

May.20.2008

MATERIAL: 304/316

PROCESS/Nr.

UNIT / SCALE: mm



△			
△			
△			
Revise	Description	Date	Approve
DRAWING NO. F24		-08	