

STAINLESS STEEL CAST FITTINGS THREADED BSP CLASS 150 PN20

Stainless steel cast fittings threaded BSP for all common fluids of 2nd group.
Lost wax casting.



Size : DN1/8" to DN4"
Connection : Female, Male BSP or hose fitting
Min Temperature : -25°C
Max Temperature : +180°C
Max Pressure : 20 Bars
Specifications : Lost wax casting
Threaded BSP

Materials : Stainless steel ASTM A351 CF8M

STAINLESS STEEL CAST FITTINGS THREADED BSP CLASS 150 PN20

SPECIFICATIONS :

- “ Lost wax “ casting
- Male conical ends threaded BSP
- Female cylindrical ends threaded BSP

USE :

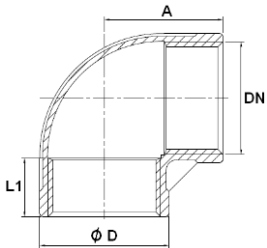
- For all common fluids of 2nd group
- Min Temperature Ts : - 25°C
- Max Temperature Ts :+ 180°C
- Max Pressure Ps : 20 bars

RANGE :

- From DN1/8" to DN4"
- Stainless steel ASTM A351 CF8M fittings

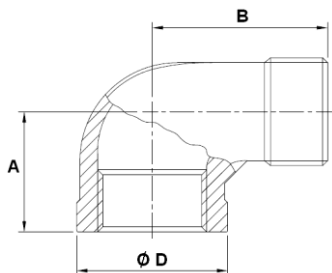
SIZE (in mm) :

- **Elbow 90° F. F. (DN 1/8"– 4") Ref. 2001**



DN	1/8"	1/4"	3/8"	1/2"	3/4"	1"	1"1/4"	1"1/2"	2"	2"1/2"	3"	4"
A	17	19	21.5	27	30	35	43	45	54	69	77	92.5
Ø D	13.9	17.4	20.9	24.9	31.2	38.1	47.4	54.1	66.6	82.4	95.9	121.8
L1	6.5	9.7	10.1	11	11.4	13.8	14.5	14.9	15.7	25.4	27	29.5
Weig. (Kg)	0.02	0.03	0.04	0.05	0.08	0.13	0.2	0.26	0.43	0.76	1.08	1.72

- **Elbow 90° M. F. (DN 1/8"– 3") Ref. 2010**

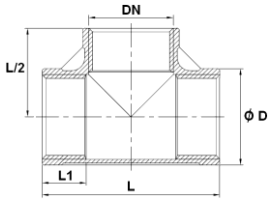


DN	1/8"	1/4"	3/8"	1/2"	3/4"	1"	1"1/4"	1"1/2"	2"	2"1/2"	3"
A	19	21.5	24.5	29	33.5	37	43	47	57.5	66	74
B	26.5	30.8	36.5	41	48	55	62	67	77.5	93	107
Ø D	13.9	17.2	20.9	24.9	31.2	38.1	47.4	54.1	66.6	87.4	101.8
Weig. (Kg)	0.02	0.03	0.04	0.05	0.08	0.14	0.19	0.28	0.41	0.91	1.65

STAINLESS STEEL CAST FITTINGS THREADED BSP CLASS 150 PN20

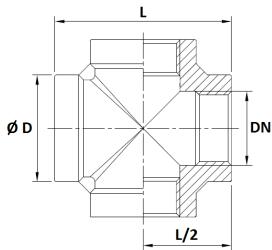
SIZE (in mm) :

- Tee F. F. F. (DN 1/8" – 4") Ref. 2003



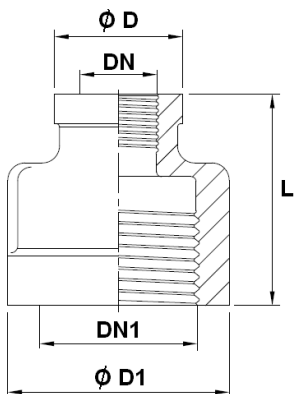
DN	1/8"	1/4"	3/8"	1/2"	3/4"	1"	1"1/4"	1"1/2"	2"	2"1/2"	3"	4"
Ø D	13.9	17.4	20.9	24.9	31.2	38.1	47.4	54.1	66.6	82.4	95.9	121.8
L	34	39	44	55	60	70	85	89	107	136	154	185
L1	6.5	9.7	10.1	11	11.4	13.8	14.5	14.9	15.7	25.4	27	29.5
Weig. (Kg)	0.03	0.04	0.06	0.07	0.11	0.17	0.26	0.34	0.53	0.88	1.2	2.06

- Cross F. F. F.F. (DN 1/8" – 4") Ref. 2002



DN	1/8"	1/4"	3/8"	1/2"	3/4"	1"	1"1/4"	1"1/2"	2"	2"1/2"	3"	4"
Ø D	14.8	18.5	22.1	28.8	33.7	42	50.4	57.1	69.2	89.2	99.5	126
L	34.1	38	44	55	63.4	73.2	85.6	89.8	108	137.2	143	180
L/2	17.05	19	22	27.5	31.7	36.6	42.8	44.9	54	86.6	71.5	90
Weig. (Kg)	0.04	0.06	0.08	0.16	0.22	0.37	0.48	0.57	0.9	1.61	2	3.3

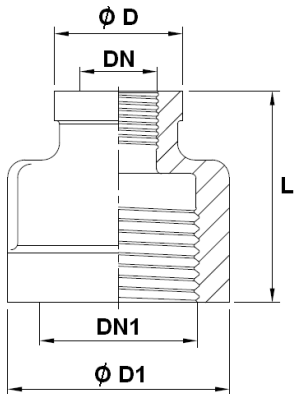
- Reduced nipple F. F. (DN 1/8" – 2") Ref. 2013



DN	1/8"	1/4"	3/8"	1/2"	3/4"	1"	1"1/4"	1"1/2"
DN1	1/4"	3/8"	1/2"	3/4"	1"	1"1/4"	1"1/2"	2"
Ø D	15.5	18.2	23	28	34	41.6	50	57
Ø D1	18	22	28.5	34	41.5	50	57	70
L	24	29	34.5	36.5	41.5	47	51.5	59
Weight (Kg)	0.02	0.03	0.07	0.08	0.12	0.19	0.24	0.39

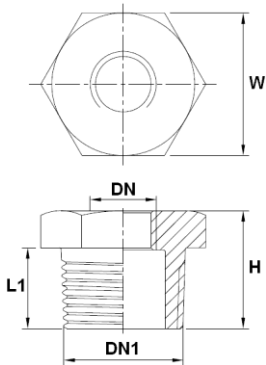
STAINLESS STEEL CAST FITTINGS THREADED BSP CLASS 150 PN20
SIZE (in mm) :

- Double reduced nipple F. F. (DN 1/8"– 2") Ref. 2014



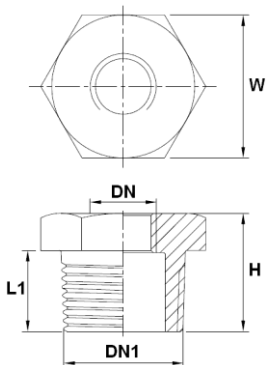
DN	1/8"	1/4"	3/8"	1/2"	3/4"	1"	1"1/4"
DN1	3/8"	1/2"	3/4"	1"	1"1/4"	1"1/2"	2"
Ø D	18.1	19.5	28.2	29	34	41.5	56.5
Ø D1	22	28.5	34	41.5	50	57	70
L	29	34	36.5	42	46	50	59
Weight (Kg)	0.04	0.06	0.09	0.12	0.18	0.24	0.45

- Reduced nipple M. F. (DN 1/8"– 2") Ref. 2021



DN	1/8"	1/4"	3/8"	1/2"	3/4"	1"	1"1/4"	1"1/2"
DN1	1/4"	3/8"	1/2"	3/4"	1"	1"1/4"	1"1/2"	2"
H	15	16.5	20	21.5	24.5	27.5	28	31
L1	12.5	13	16	17	20	22	22	23.5
W	15	18	23	29	35	45	50	62
Weig. (Kg)	0.01	0.02	0.03	0.04	0.07	0.11	0.13	0.23

- Double reduced nipple M. F. (DN 1/8"– 2") Ref. 2024

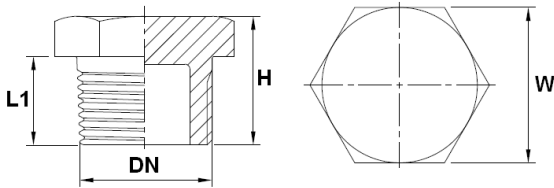


DN	1/8"	1/4"	3/8"	1/2"	3/4"	1"	1"1/4"
DN1	3/8"	1/2"	3/4"	1"	1"1/4"	1"1/2"	2"
H	16.5	20	21.5	24.5	27.5	28	31
L1	13	16	17	20	22	22	23.5
W	18	23	29	35	45	50	62
Weig. (Kg)	0.02	0.03	0.05	0.08	0.13	0.16	0.28

STAINLESS STEEL CAST FITTINGS THREADED BSP CLASS 150 PN20

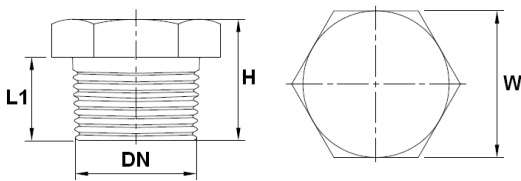
SIZE (in mm) :

- Hexagon hollow plug (DN 1/2"– 2") Ref. 2022



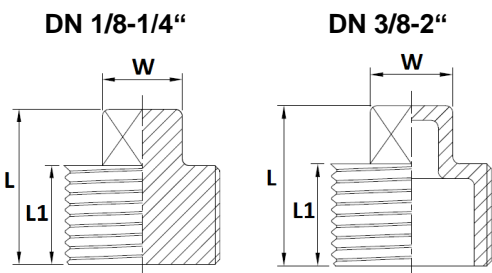
DN	1/2"	3/4"	1"	1"1/4"	1"1/2"	2"
H	22.6	23.3	26.8	30.5	30.8	34
L1	16	16.5	19	21	21	22.8
W	25.2	29.7	36.5	45.3	51.4	62.5
Weight (Kg)	0.04	0.06	0.09	0.14	0.19	0.28

- Hexagon plain plug (DN 1/8"– 2") Ref. 2023



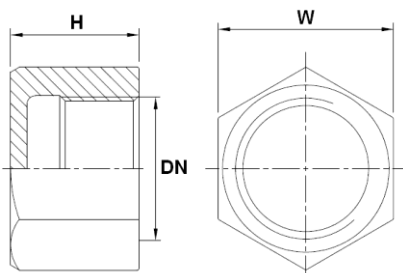
DN	1/8"	1/4"	3/8"	1/2"	3/4"	1"	1"1/4"	1"1/2"	2"
H	19	19	19	22	26	28	33	35	39
L1	11	12	13	16	17	19	21	23	27
W	12	16	19	23	28	36	46	50	65
Weig. (Kg)	0.01	0.02	0.04	0.06	0.12	0.2	0.38	0.51	0.91

- Square plug (DN 1/8"– 2") Ref. 2020



DN	1/8"	1/4"	3/8"	1/2"	3/4"	1"	1"1/4"	1"1/2"	2"
L	18	20	20	25	26.5	33	35	35	40
L1	11	12	12	15	15.5	20	20	20	23
W	7.2	8	10	13	16	19	22	25	29
Weig. (Kg)	0.01	0.02	0.02	0.03	0.04	0.08	0.12	0.14	0.22

- Female hexagon cap (DN 1/4"– 2") Ref. 2037

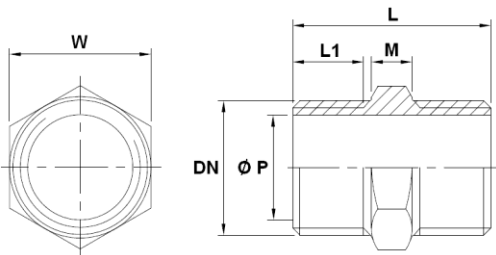


DN	1/4"	3/8"	1/2"	3/4"	1"	1"1/4"	1"1/2"	2"
H	17	17.5	20	20.4	27.1	30	30.3	32.3
W	17.5	21.2	25.5	30.1	37.4	47	53.2	66
Weight (Kg)	0.02	0.03	0.04	0.05	0.1	0.15	0.19	0.3

STAINLESS STEEL CAST FITTINGS THREADED BSP CLASS 150 PN20

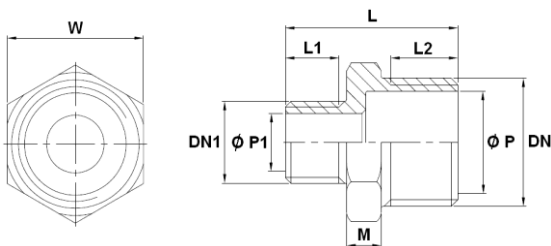
SIZE (in mm) :

- Hexagon nipple (DN 1/8"– 2") Ref. 2030



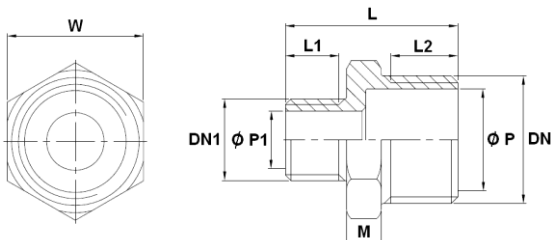
DN	1/8"	1/4"	3/8"	1/2"	3/4"	1"	1"1/4"	1"1/2"	2"
L	30	32	32	41	43.5	49	52	52	55
L1	12	13	13	16.5	17.8	19.5	21	21	22
M	6	6	6	8	8.5	10	10	10	11
Ø P	5.5	8.2	11.8	15.2	21	26.5	35	41	53
W	13	15	18	23	29	35	45	50	62
Weig. (Kg)	0.02	0.02	0.03	0.05	0.07	0.11	0.17	0.21	0.31

- Reduced nipple male - male (DN 1/8"– 2") Ref. 2031



DN	1/4"	3/8"	1/2"	3/4"	1"	1"1/4"	1"1/2"	2"
DN1	1/8"	1/4"	3/8"	1/2"	3/4"	1"	1"1/4"	1"1/2"
L	31	34	36.5	41	45	51	53	55.5
L1	12	13	13	17	16	20	21	21.5
L2	13	14	16.5	17.5	20	21	21.5	23
M	6	7	7	7	9	10	10.5	11
Ø P	8.2	11.8	15.2	21	27	35	41	51.8
Ø P1	5.5	8.2	11.8	15.2	21	27	35	41
W	15	18.8	23	28.5	35.5	45	51	62
Weight (Kg)	0.02	0.03	0.04	0.06	0.1	0.17	0.24	0.31

- Double reduced nipple male - male (DN 1/8"– 2") Ref. 2032

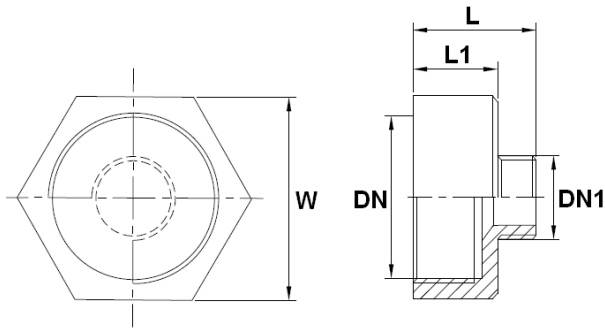


DN	3/8"	1/2"	3/4"	1"	1"1/4"	1"1/2"	2"
DN1	1/8"	1/4"	3/8"	1/2"	3/4"	1"	1"1/4"
L	34	36.5	41	45	48.5	52	55.5
L1	10	11	12	14	14	17.5	18
L2	14	16.5	17.5	20	21	21.5	23
M	7	7	7	9	10	10.5	11
Ø P	11.8	15.2	21	27	35	41	51.8
Ø P1	5.5	8.2	11.8	15.2	21	27	35
W	18.8	23	28.5	35.5	45	51	62
Weight (Kg)	0.03	0.04	0.06	0.1	0.16	0.24	0.31

STAINLESS STEEL CAST FITTINGS THREADED BSP CLASS 150 PN20

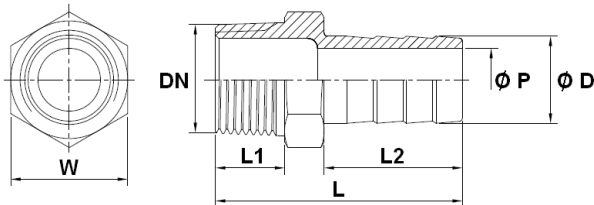
SIZE (in mm) :

- Reduced nipple female - male (DN 1/8"– 2") Ref. 2033



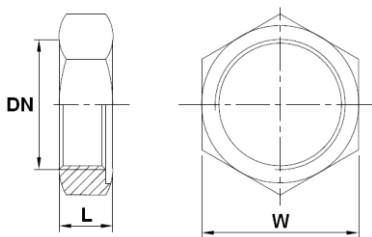
DN	1/4"	3/8"	1/2"	3/4"	1"	1"1/4"	1"1/2"	2"
DN1	1/8"	1/4"	3/8"	1/2"	3/4"	1"	1"1/4"	1"1/2"
L	27	31	35	38.5	44	47	50	53
L1	16.5	18.5	22	23	26	27	28	30
W	17	21	26	32	38	46	54	63
Weig. (Kg)	0.02	0.04	0.07	0.1	0.13	0.17	0.27	0.29

- Hose nozzle (DN 1/4"– 2") Ref. 2035



DN	1/4"	3/8"	1/2"	3/4"	1"	1"1/4"	1"1/2"	2"
L	43	49	56.5	60	69	70	80	88
L1	11.5	13	15	15.5	19	22	22	22.5
L2	25	29.5	33	34	39	37	47.5	53.5
Ø D	8	10	13	20	25	32	40	51.5
Ø P	4	5	7	15	19.5	26.5	33.5	44
W	15	19	23	28	37	45	50	62
Weig. (Kg)	0.02	0.03	0.06	0.08	0.13	0.2	0.29	0.44

- Hexagon nut (DN 1/8"– 2") Ref. 2036



DN	1/8"	1/4"	3/8"	1/2"	3/4"	1"	1"1/4"	1"1/2"	2"
L	6.3	7	7.5	7.7	9.2	9	11.7	11.8	13.1
W	17.3	19.1	25.3	30.1	34.4	43.2	52	58.1	71.9
Weig. (Kg)	0.01	0.01	0.02	0.02	0.03	0.05	0.09	0.1	0.16

STAINLESS STEEL CAST FITTINGS THREADED BSP CLASS 150 PN20**STANDARDS :**

- Manufacturer certified ISO 9001 : 2015
- DIRECTIVE 2014/68/EU : Products excluded from directive (Article 4,§3)
- Male conical BSP threaded according to ISO 7/1 R for Ref. 2010, 2020, 2021, 2022, 2023, 2024, 2030, 2031, 2032, 2033 and 2035
- Female cylindrical BSP threaded according to ISO 7/1 Rp for Ref. 2001, 2002, 2003, 2010, 2013, 2014, 2021, 2024, 2033, 2036 and 2037

ADVICE : Our opinion and our advice are not guaranteed and SFERACO shall not be liable for the consequences of damages.
The customer must check the right choice of the products with the real service conditions.