



Image may differ from product. See technical specification for details.

SNLD 3044 G

Split plummer (pillow) block housing, SNL 30, 31 and 32 series

SNL plummer (pillow) block housings in the 30, 31 and 32 series are robust and suitable for tough operating conditions. They enable the incorporated bearings to achieve maximum service life with less need for maintenance. Different housing variants and seal designs are available, making the use of tailored housings virtually unnecessary and enabling cost-effective bearing arrangements to be made

- Easy to install
- Cost-effective bearing arrangement
- Reduce maintenance
- Minimize lubricant leakage

Overview

Dimensions

Diameter of bearing seat	13.386 in
Width of bearing seat	5.118 in
Centre height (pillow block)	8.268 in
Centre distance between bolt holes	20.079 in
Centre distance between bolt holes (axial direction)	5.118 in
Attachment bolt diameter	1.181 in

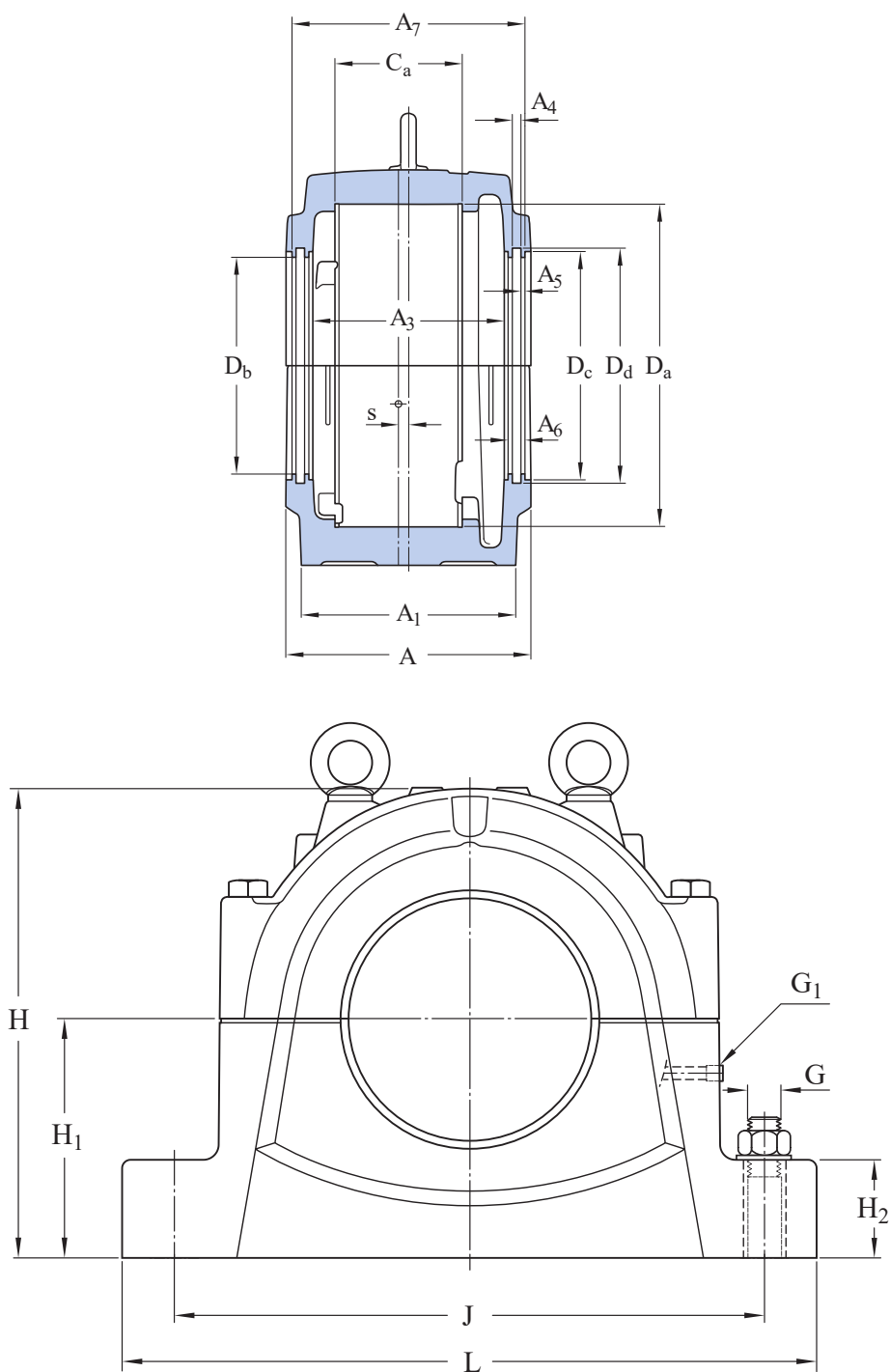
Properties

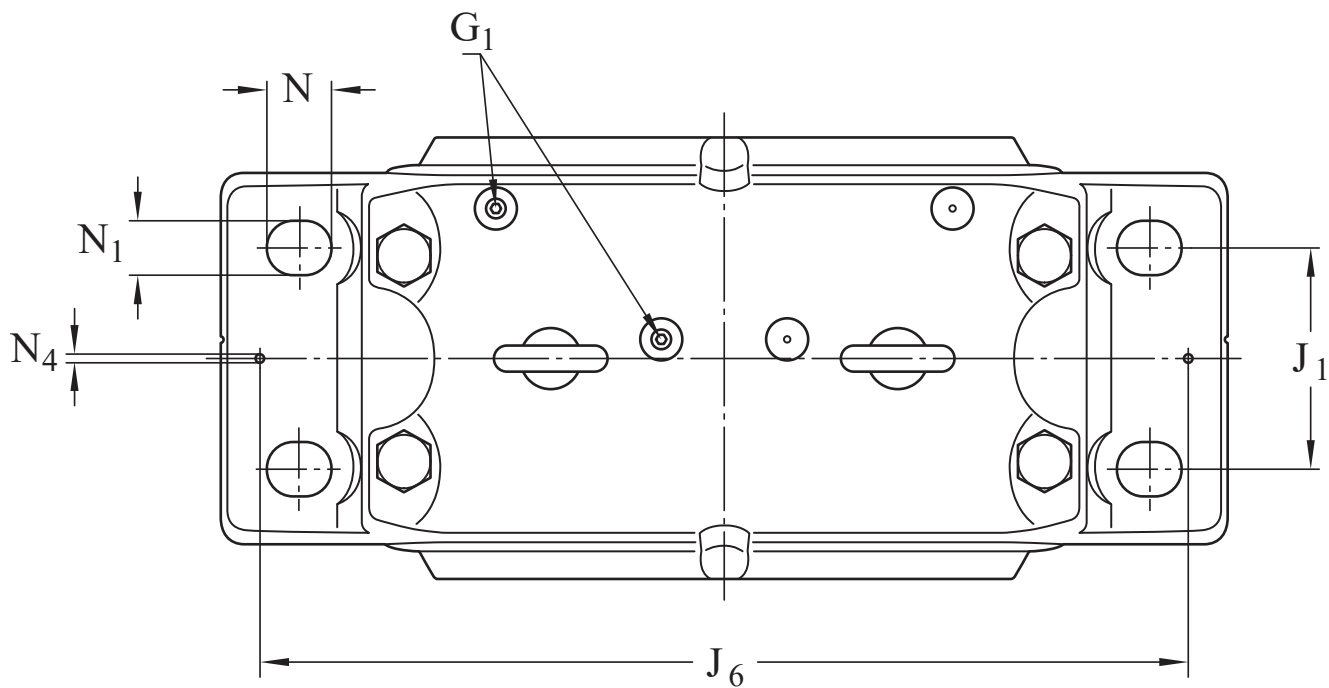
Housing type	Plummer/pillow block
Housing configuration	Two-piece
Mounting arrangement	Through shaft/Shaft end
Number of bolt holes for fasteners	4
Material, housing	Spheroidal graphite cast iron
Bearing housing seal type	Without
Housing lubrication feature/possibility	Grease

Logistics

Product net weight	275.578 lb
eClass code	23-05-17-01
UNSPSC code	31171519

Technical specification





Dimensions

SEAL GROOVES

A_3	8.11 in	Inside width
A_4	0.433 in	Width of seal groove
A_5	0.217 in	Width of labyrinth stage
A_6	0.866 in	Width of labyrinth
A_7	10.315 in	Width between seal grooves
D_c	10.89 in	Diameter of seal groove
D_d	11.244 in	Diameter of seal groove

GREASE ESCAPE HOLES

DOWEL PINS

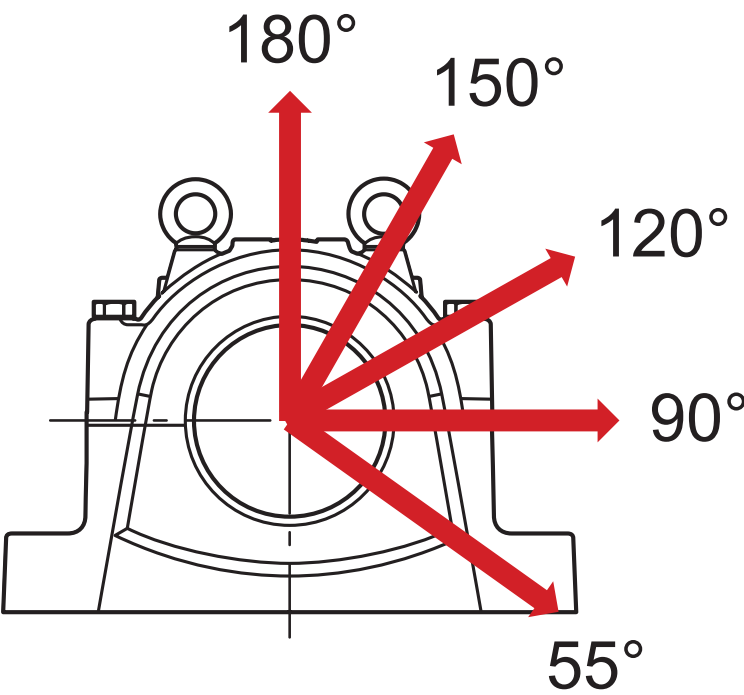
J_6	22.047 in	Distance between dowel pins
N_4	0.787 in	Diameter of dowel pins

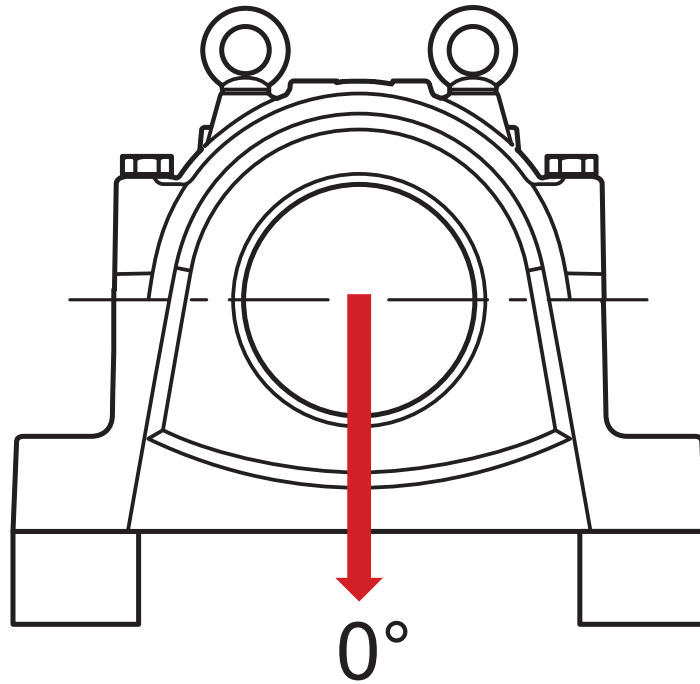
OUTSIDE DIMENSIONS

D _b	10.299 in	Bore diameter
A	11.024 in	Overall width
A ₁	9.055 in	Foot width
G ₁	1/8-27 NPSF	Thread of relubrication holes
H	16.181 in	Overall height
H ₂	3.346 in	Foot height
L	24.016 in	Overall length
J	20.079 in	Distance between attachment bolts
J ₁	5.118 in	Axial distance between attachment bolts
N	1.654 in	Length of attachment bolt hole (radial)
N ₁	1.378 in	Width of attachment bolt hole
s	0.394 in	Offset of bearing axis

BEARING SEAT

D _a	13.386 in	Diameter of bearing seat
	G7	Tolerance class of bearing seat diameter
C _a	5.118 in	Width of bearing seat
H ₁	8.268 in	Centre height of bearing seat





Calculation data

YIELD POINTS OF CAP BOLTS

Q_{120°	404 656 lbf	Load to reach yield point at 120° load angle
Q_{150°	233 801 lbf	Load to reach yield point at 150° load angle
Q_{180°	202 328 lbf	Load to reach yield point at 180° load angle

BREAKING LOADS

P_{0°	1 052 106 lbf	Breaking load at 0° load angle (if the housing is not supported over its entire base)
P_{55°	1 294 900 lbf	Breaking load at 55° load angle
P_{90°	647 450 lbf	Breaking load at 90° load angle
P_{120°	445 122 lbf	Breaking load at 120° load angle
P_{150°	404 656 lbf	Breaking load at 150° load angle
P_{180°	526 053 lbf	Breaking load at 180° load angle
P_a	339 911 lbf	Breaking load, axial

Materials

Housing material	Spheroidal graphite cast iron
Corrosion protection	Paint - in accordance with ISO 12944-2, corrosivity category C2

Mounting information

Recommended diameter of attachment bolts	G	30 mm
Recommended tightening torque for attachment bolts		11 594.477 lbf·in
Size of cap bolts		M24x160
Tightening torque for cap bolts		3 097.761 lbf·in
Size of eye bolt		M20
Initial grease fill, 20%		56.438 oz
Initial grease fill, 40%		95.24 oz

Included products




Grease fitting	AH 1/8-27 PTF, M1 G 1/8
Adapter	LAPN 1/8

Compatible products

Component

Nipple with threads female G 1/4 to male G1/8	LAPN 1/8
---	--------------------------

More Information

 Designs and variants	 Product details	 Tools
Standard housing design	Permissible misalignment	SKF Product select
Housing variants	Typical shaft-bearing combinations	SKF Product select
Sealing solutions	Locating/non-locating support	SimPro Quick
	Loads	Tool and Accessory Selector for sleeves and shafts
	Temperature limits	LubeSelect for SKF greases
	Permissible speed	Drive-up Method Program
	Lubrication	Heater selection tool
	Mounting	Oil Injection Method Program
	Condition monitoring	
	Associated products	
	Ordering information	
	Designation system	

Terms of use

By accessing and using this website / app owned and published by AB SKF (publ.) (556007-3495 · Gothenburg) ("SKF"), you agree to the following terms and conditions:

Warranty Disclaimer and Limitation of Liability

Although every care has been taken to assure the accuracy of the information on this website / app, SKF provides this information "AS IS" and DISCLAIMS ALL WARRANTIES, EXPRESS OR IMPLIED, INCLUDING, BUT NOT LIMITED TO, IMPLIED WARRANTIES OF MERCHANTABILITY AND FITNESS FOR A PARTICULAR PURPOSE. You acknowledge that your use of this website / app is at your sole risk, that you assume full responsibility for all costs associated with use of this website / app, and that SKF shall not be liable for any direct, incidental, consequential, or indirect damages of any kind arising out of your access to, or use of the information or software made available on this website / app.

Any warranties and representations in this website / app for SKF products or services that you purchase or use will be subject to the agreed upon terms and conditions in the contract for such product or service.

Further, for non-SKF websites / apps that are referenced in our website / app or where a hyperlink appears, SKF makes no warranties concerning the accuracy or reliability of the information in these websites / apps and assumes no responsibility for material created or published by third parties contained therein. In addition, SKF does not warrant that this website / app or these other linked websites / apps are free from viruses or other harmful elements.

Third Party Services

When viewing YouTube content via the SKF website(s) (i.e. using [YouTube API Services](#)), you agree to be bound by the [YouTube Terms of Service](#).

Copyright

Copyright in this website / app copyright of the information and software made available on this website / app rest with SKF or its licensors. All rights are reserved. All licensed material will reference the licensor that has granted SKF the right to use the material. The information and software made available on this website / app may not be reproduced, duplicated, copied, transferred, distributed, stored, modified, downloaded or otherwise exploited for any commercial use without the prior written approval of SKF. However, it may be reproduced, stored and downloaded for use by individuals without prior written approval of SKF. Under no circumstances may this information or software be supplied to third parties.

This website /app includes certain images used under license from Shutterstock, Inc.

Trademarks and Patents

All trademarks, brand names, and corporate logos displayed on the website / app are the property of SKF or its licensors, and may not be used in any way without prior written approval by SKF. All licensed trademarks published on this website / app reference the licensor that has granted SKF the right to use the trademark. Access to this website / app does not grant to the user any license under any patents owned by or licensed to SKF.

Changes

SKF reserves the right to make changes or additions to this website / app at any time.