

RB6015



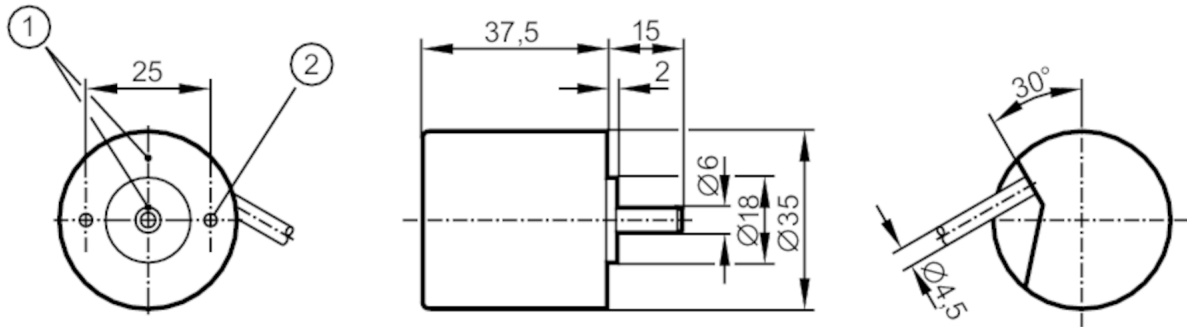
Incremental encoder with solid shaft

RB-0500-I24/L2

Article no longer available - archive entry

Alternative articles: RB3500

When selecting an alternative article and accessories please note that technical data may differ!



- 1 reference mark
- 2 M3 Depth 5 mm



Product characteristics

Resolution	500 resolution
Shaft design	solid shaft
Shaft diameter [mm]	6

Application

Function principle	incremental
--------------------	-------------

Electrical data

Operating voltage [V]	10...30 DC
Current consumption [mA]	150

Outputs

Electrical design	HTL
Max. current load per output [mA]	50
Switching frequency [kHz]	160
Type of short-circuit protection	< 60 s
Phase difference A and B [°]	90

Measuring/setting range

Resolution	500 resolution
------------	----------------

Operating conditions

Ambient temperature [°C]	-40...70
Note on ambient temperature	for firmly laid cable
Max. relative air humidity [%]	75; (briefly: 95 %)
Protection	IP 64

RB6015



Incremental encoder with solid shaft

RB-0500-I24/L2

Tests / approvals		
Shock resistance		100 g (6 ms)
Vibration resistance		10 g (55...2000 Hz)
Mechanical data		
Weight	[g]	260.4
Dimensions	[mm]	Ø 35 / L = 52.5
Materials		aluminium
Max. revolution, mechanical	[U/min]	10000
Max. starting torque	[Nm]	1
Reference temperature torque	[°C]	20
Shaft design		solid shaft
Shaft diameter	[mm]	6
Shaft material		steel (1.4104)
Max. shaft load axial (at the shaft end)	[N]	5
Max. shaft load radial (at the shaft end)	[N]	10

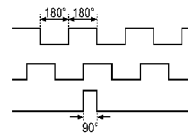
Electrical connection

Cable: 2 m, PUR; radial, can also be used axially

brown	A
green	0 V A
grey	B
pink	0 V B
red	0 index
black	0 V 0 index
brown/green	L+ (Up)
white/green	L- 0 V (Un)
lilac	failure inverted
screen	housing

Diagrams and graphs

Pulse diagram



direction of rotation clockwise (looking at the shaft)