



## DA 2/60 damper



- For permitted total weight of workpiece pallets up to 60 kg
- Pneumatic damper
- Infinitely adjustable
- Optimal damping at a ratio of 2:1 between heavy and light workpiece pallets
- Can be combined with WT 2/E, WT 2, WT 2/F, WT 2/H and WT 2/F-H

- Installation location: ST 2/... section, BS 2/... belt section and HQ 2... lift transverse unit
- Not suitable for HQ 2/U2 and HQ 2/..-H

## Product description

The damper cushions the impact of workpiece pallets when they are moved from a transverse section into a longitudinal section and vice versa. The pneumatic return occurs in parallel to the opening of the stop gate, which permits the workpiece pallet to move toward the damper.

## Technical data

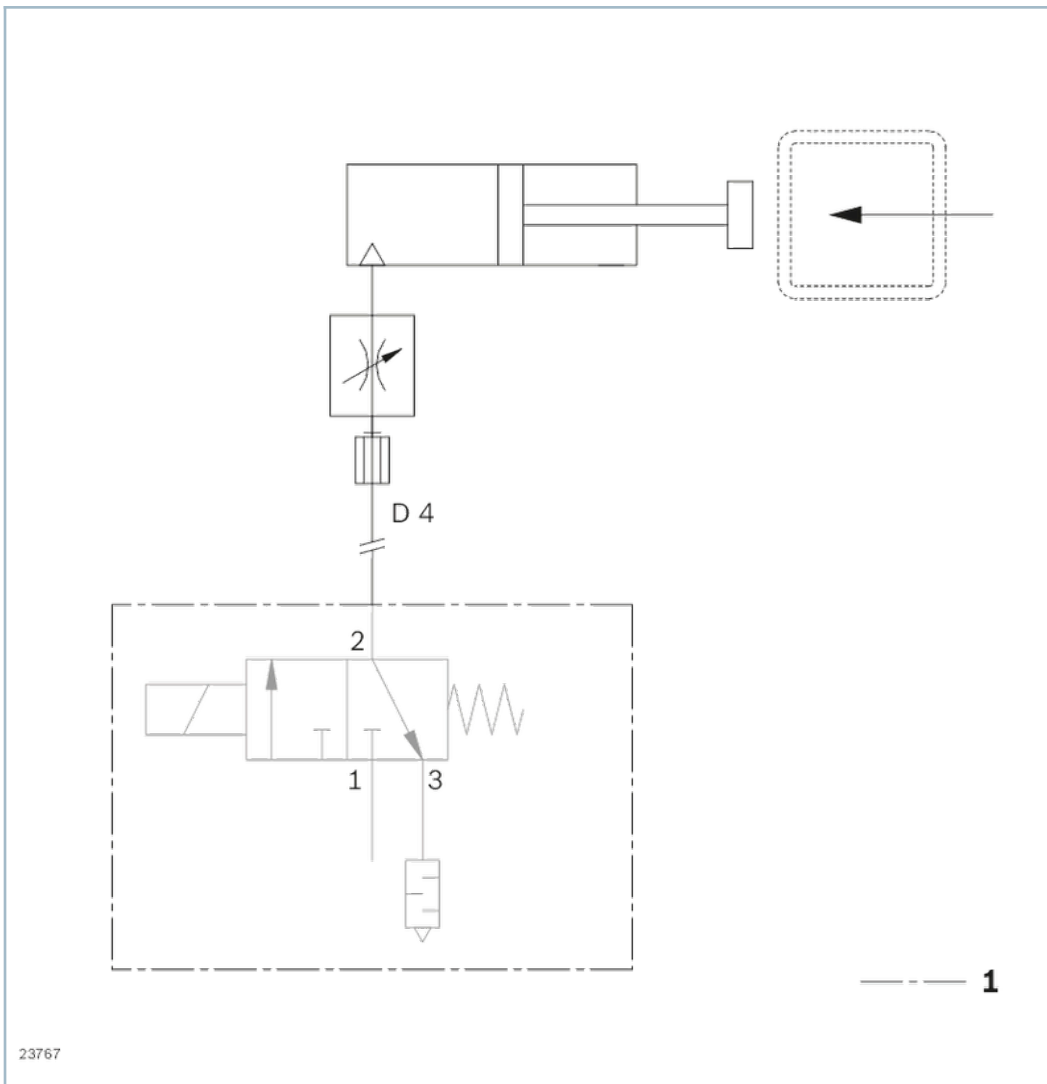
No.			3842557983
Max. total weight of workpiece pallet	$m_G$	kg	60
Max. operating temperature <sup>1)</sup>	T	°C	0 ... +60
Material entry			Housing: Aluminum, hard anodized Stop: Steel, hardened
Mass	m	kg	1
Pneumatic push-in fitting	Ø	mm	4

1) High-temperature damper on request

Permissible accumulation load

	$m_G$	$v_N$
	kg	m/min
	60	6
	40	9
	35	12
	30	18
	24	24
	18	30
	10	36

## Symbols/Circuit diagrams

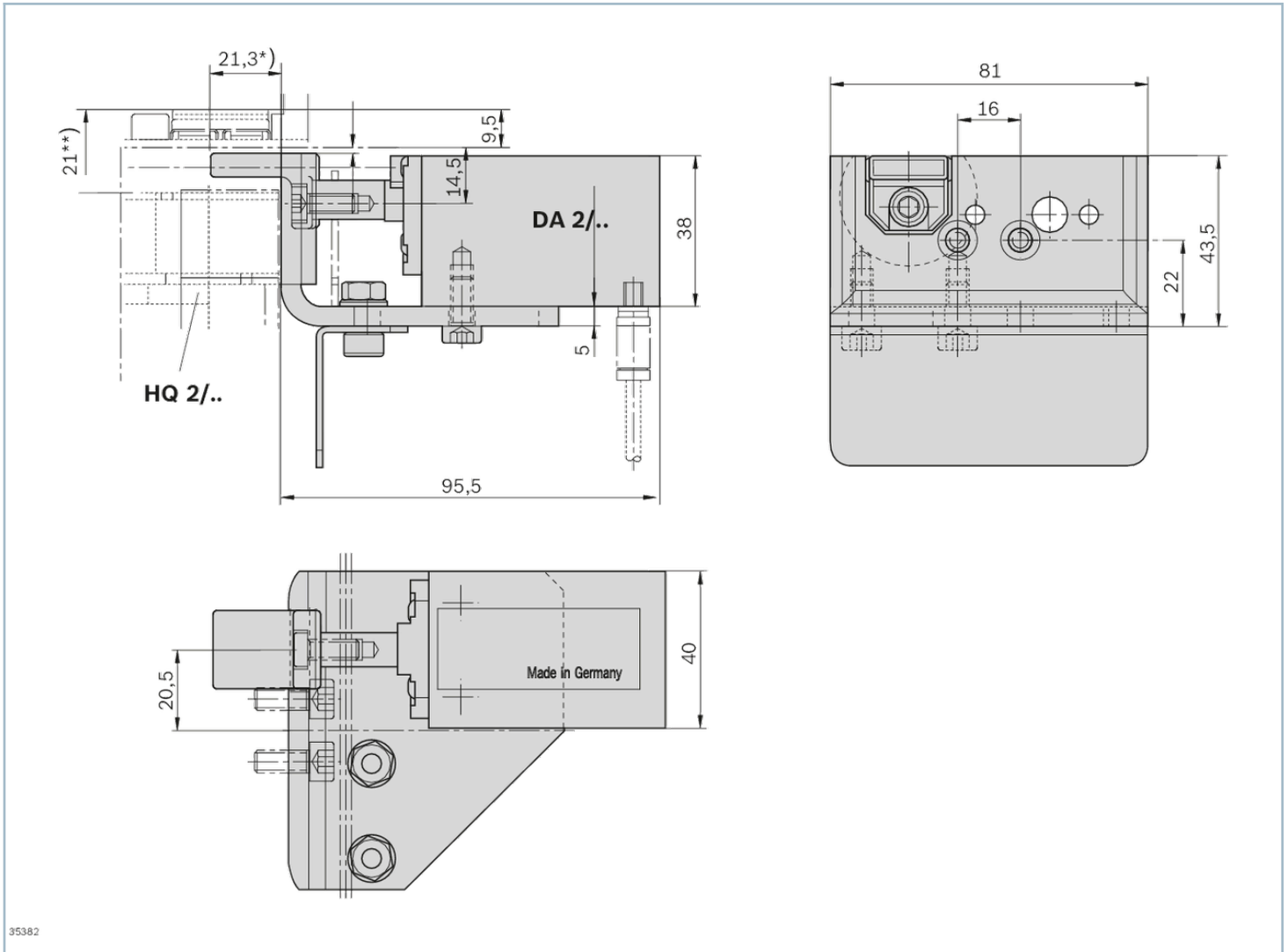


23767

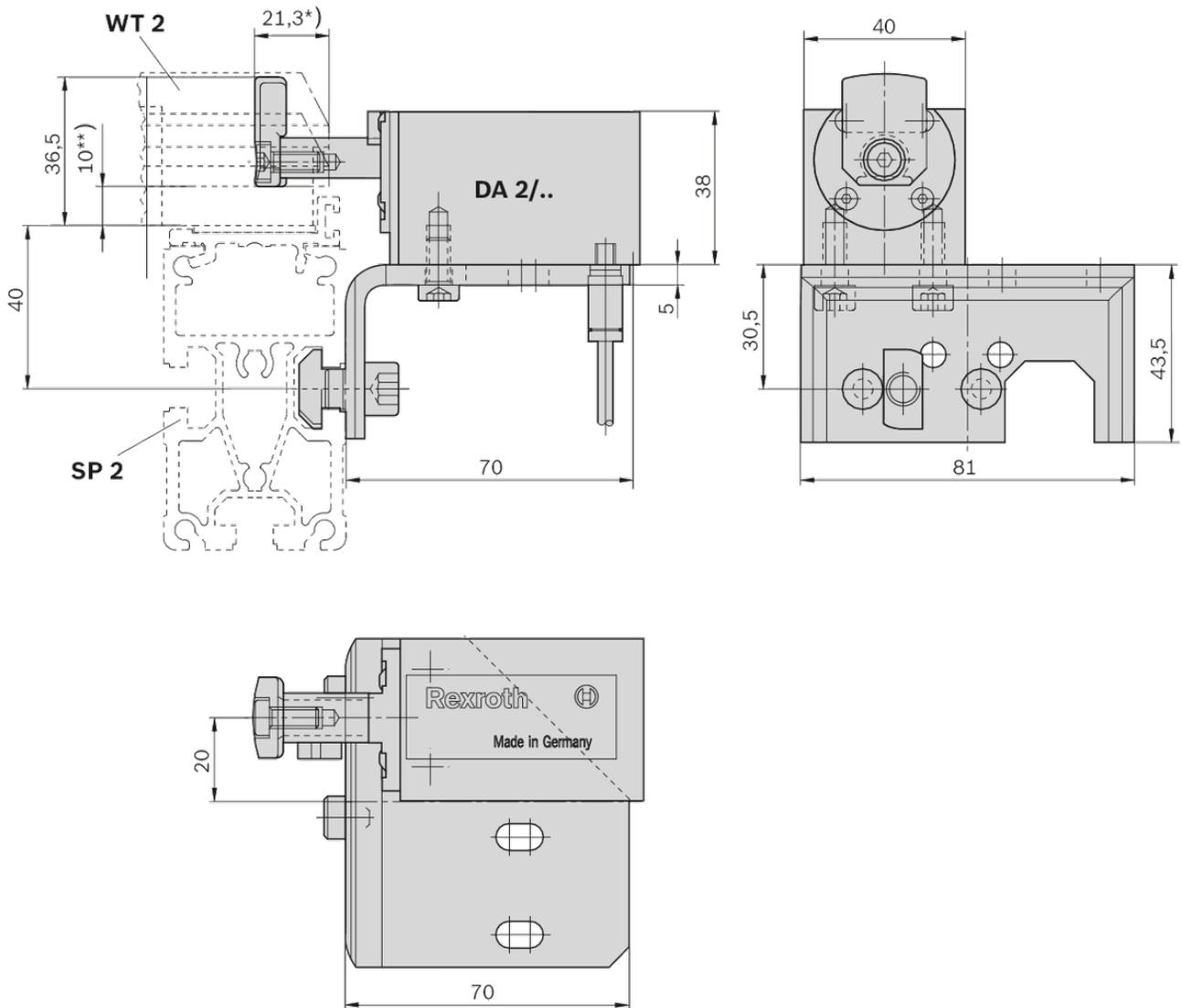
Not included in the scope of delivery

## Dimensions

## DA 2/... – HQ 2/...



## DA 2/... – SP 2/...



35381

Materials

Materials

# Delivery notes

## Condition of Delivery

Not assembled

## Scope of delivery

Incl. fastening material for mounting on an ST 2/... or BS 2/... or EQ 2/... or HQ 2/U, HQ 2/T, HQ 2/S, HQ 2/O  
DA 2/60 damper with two different stops to optionally use for infeeding or outfeeding

---

## Ordering codes

	No.
DA 2/60 damper	3842557983