

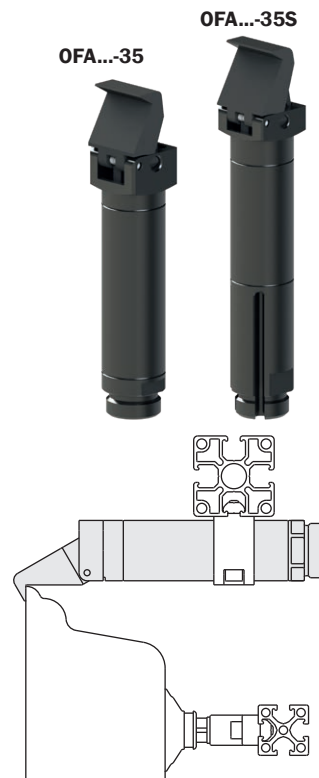
Pinze pneumatiche mono-dito angolari per staffaggio, serie OF

- Azionamento a semplice effetto.
- Sensori magnetici opzionali.
- Grasso alimentare FDA-H1.

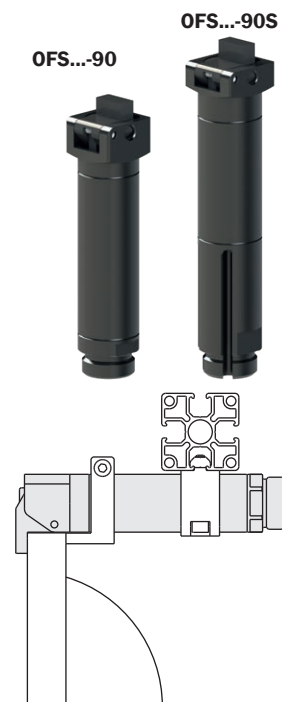
One finger angular pneumatic grippers for clamping, series OF

- Single acting.
- Optional magnetic sensors.
- Food grade grease FDA-H1.

| | OFA14-35 | OFA20-35 OFA20-35S | OFA30-35 OFA30-35S |
|---|---|-----------------------|-----------------------|
| Fluido Medium | Aria compressa a norma ISO 8573-1:2010 [7:4:4] Compressed air in compliance with ISO 8573-1:2010 [7:4:4] | | |
| Corpo pinza Gripper body | Alluminio Aluminium | | |
| Pressione di esercizio Pressure range | 2.5 ÷ 8 bar | | |
| Temperatura di esercizio Temperature range | 5 ÷ 60 °C. | | |
| Corsa Stroke | 35° | | |
| Alesaggio Piston bore | Ø10 mm | Ø16 mm | Ø25 mm |
| Coppia di chiusura a 6 bar Closing torque at 6 bar | 26 Ncm | 100 Ncm | 430 Ncm |
| Consumo d'aria per ciclo Cycle air consumption | 0.4 cm ³ | 1.24 cm ³ | 4.56 cm ³ |
| Peso Weight | 25 g | 65 g 86 g | 206 g 272 g |



| | OFS14-90 | OFS20-90 OFS20-90S | OFS30-90 OFS30-90S |
|---|---|-----------------------|-----------------------|
| Fluido Medium | Aria compressa a norma ISO 8573-1:2010 [7:4:4] Compressed air in compliance with ISO 8573-1:2010 [7:4:4] | | |
| Corpo pinza Gripper body | Alluminio Aluminium | | |
| Pressione di esercizio Pressure range | 2.5 ÷ 8 bar | | |
| Temperatura di esercizio Temperature range | 5 ÷ 60 °C. | | |
| Corsa Stroke | 95° | | |
| Alesaggio Piston bore | Ø10 mm | Ø16 mm | Ø25 mm |
| Coppia di chiusura a 6 bar Closing torque at 6 bar | 19 Ncm | 70 Ncm | 300 Ncm |
| Consumo d'aria per ciclo Cycle air consumption | 1 cm ³ | 3.52 cm ³ | 12.9 cm ³ |
| Peso Weight | 23 g | 60 g 80 g | 185 g 245 g |

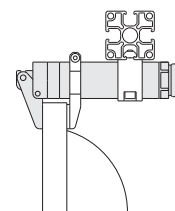


Pinze pneumatiche mono-dito angolari per staffaggio, serie OF

- Azionamento a semplice effetto.
- Sensori magnetici opzionali.
- Grasso alimentare FDA-H1.

One finger angular pneumatic grippers for clamping, series OF

- Single acting.
- Optional magnetic sensors.
- Food grade grease FDA-H1.



| | OFR14-95 | OFR20-95 OFR20-95S | OFR30-95 OFR30-95S |
|---|---|-----------------------|-----------------------|
| Fluido Medium | Aria compressa a norma ISO 8573-1:2010 [7:4:4] Compressed air in compliance with ISO 8573-1:2010 [7:4:4] | | |
| Corpo pinza Gripper body | Alluminio Aluminium | | |
| Pressione di esercizio Pressure range | 2.5 ÷ 8 bar | | |
| Temperatura di esercizio Temperature range | 5 ÷ 60 °C. | | |
| Corsa Stroke | 95° | | |
| Alesaggio Piston bore | Ø10 mm | Ø16 mm | Ø25 mm |
| Coppia di chiusura a 6 bar Closing torque at 6 bar | 19 Ncm | 70 Ncm | 300 Ncm |
| Consumo d'aria per ciclo Cycle air consumption | 1 cm ³ | 3.52 cm ³ | 12.9 cm ³ |
| Peso Weight | 25 g | 60 g 81 g | 193 g 257 g |

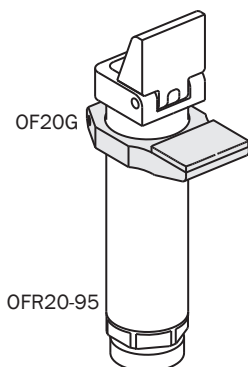
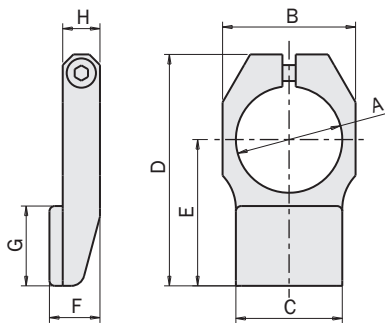
| | OFR14-95M | OFR20-95M OFR20-95SM | OFR30-95M OFR30-95SM |
|---|---|-------------------------|-------------------------|
| Fluido Medium | Aria compressa a norma ISO 8573-1:2010 [7:4:4] Compressed air in compliance with ISO 8573-1:2010 [7:4:4] | | |
| Corpo pinza Gripper body | Alluminio Aluminium | | |
| Pressione di esercizio Pressure range | 2.5 ÷ 8 bar | | |
| Temperatura di esercizio Temperature range | 5 ÷ 60 °C. | | |
| Corsa Stroke | 95° | | |
| Alesaggio Piston bore | Ø10 mm | Ø16 mm | Ø25 mm |
| Coppia di chiusura a 6 bar Closing torque at 6 bar | 19 Ncm | 70 Ncm | 300 Ncm |
| Consumo d'aria per ciclo Cycle air consumption | 1 cm ³ | 3.52 cm ³ | 12.9 cm ³ |
| Peso Weight | 25 g | 60 g 81 g | 790 g 990 g |

| | OFR14-95G | OFR20-95G OFR20-95SG | OFR30-95G OFR30-95SG |
|---|---|-------------------------|-------------------------|
| Fluido Medium | Aria compressa a norma ISO 8573-1:2010 [7:4:4] Compressed air in compliance with ISO 8573-1:2010 [7:4:4] | | |
| Corpo pinza Gripper body | Alluminio Aluminium | | |
| Pressione di esercizio Pressure range | 2.5 ÷ 8 bar | | |
| Temperatura di esercizio Temperature range | 5 ÷ 60 °C. | | |
| Corsa Stroke | 95° | | |
| Alesaggio Piston bore | Ø10 mm | Ø16 mm | Ø25 mm |
| Coppia di chiusura a 6 bar Closing torque at 6 bar | 19 Ncm | 70 Ncm | 300 Ncm |
| Consumo d'aria per ciclo Cycle air consumption | 1 cm ³ | 3.52 cm ³ | 12.9 cm ³ |
| Peso Weight | 30 g | 80 g 100 g | 230 g 300 g |

Unità Rotanti
Rotary UnitsCambia Utensile
Quick ChangerProfili e Staffe
Profiles and BracketsPinze
GrippersAttuatori Lineari
Linear ActuatorsSospensioni
SuspensionsTaglierini
NippersKit-Robot
Robot KitAccessori Opzionali
OptionsSensori
Sensors

Riscontro per pinze OFR

(kit completo di viti)



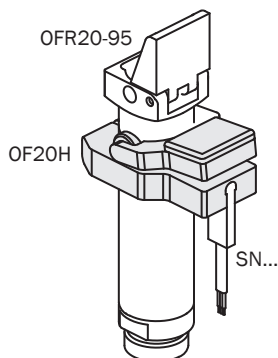
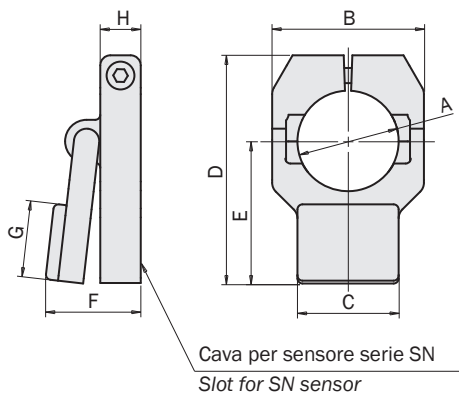
Fixed stopper for OFR grippers

(kit with screws)

| | OF14G | OF20G | OF30G |
|----------------|-------|-------|-------|
| A [mm] | Ø14 | Ø20 | Ø30 |
| B [mm] | 19 | 25 | 37 |
| C [mm] | 14 | 20 | 30 |
| D [mm] | 32 | 43.5 | 63 |
| E [mm] | 19 | 27.5 | 40 |
| F [mm] | 10 | 9.5 | 12 |
| G [mm] | 11 | 15 | 20 |
| H [mm] | 6 | 7 | 9 |
| Peso Weight | 6g | 12g | 30g |

Riscontro per sensore magnetico

(kit completo di viti)



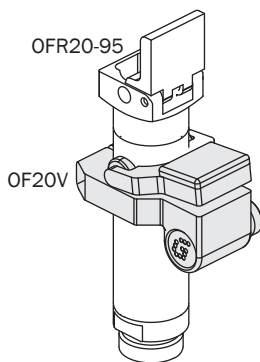
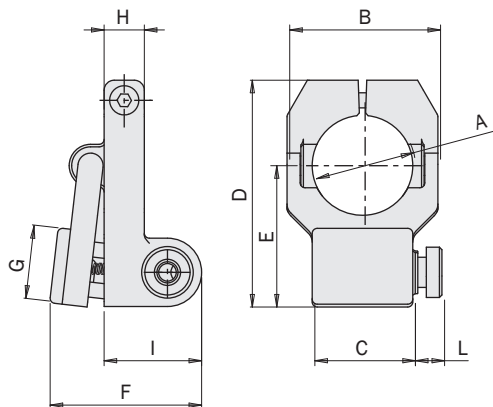
Stopper for magnetic sensor

(kit with screws)

| | OF14H | OF20H | OF30H |
|----------------|--|-------|-------|
| A [mm] | Ø14 | Ø20 | Ø30 |
| B [mm] | 22 | 30 | 42 |
| C [mm] | 14 | 20 | 30 |
| D [mm] | 34.5 | 45 | 64 |
| E [mm] | 21 | 28 | 40 |
| F [mm] | 17.6 | 18.7 | 25.5 |
| G [mm] | 11 | 15 | 20 |
| H [mm] | 8 | 8 | 12 |
| I [mm] | Cava per sensori SN Slot for SN sensors | | |
| Peso Weight | 15g | 20g | 28g |

Riscontro per sensore di vuoto

(kit completo di viti)



Stopper for vacuum sensor

(kit with screws)

| | OF14V | OF20V | OF30V |
|----------------|-------|-------|-------|
| A [mm] | Ø14 | Ø20 | Ø30 |
| B [mm] | 22 | 30 | 42 |
| C [mm] | 14 | 20 | 30 |
| D [mm] | 34.5 | 45.1 | 64 |
| E [mm] | 21 | 28.1 | 40 |
| F [mm] | 28.9 | 30.1 | 38 |
| G [mm] | 11 | 15 | 20 |
| H [mm] | 8 | 8 | 12 |
| I [mm] | 19.3 | 19.5 | 24.4 |
| L [mm] | 11.3 | 5.8 | 5.8 |
| Peso Weight | 8.9 | 13.4 | 32.7 |

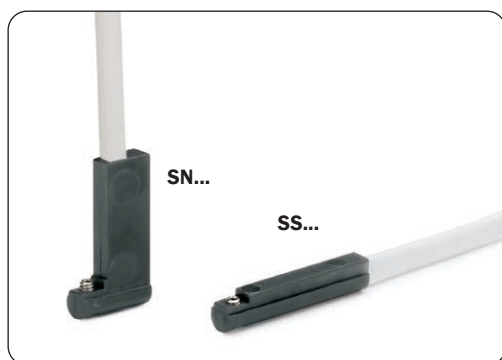
Sensori magnetici opzionali

Il rilevamento della posizione di lavoro è affidato a uno o più sensori magnetici di prossimità (opzionali), che rilevano la posizione attraverso il magnete sul pistone. Quindi, per un corretto funzionamento, è da evitare l'impiego in presenza di forti campi magnetici od in prossimità di grosse masse di materiale ferromagnetico.

I sensori utilizzabili sono:

| | | |
|-----------|-----|---|
| SN4N225-G | PNP | Cavo 2.5m 2.5m cable |
| SN4M225-G | NPN | |
| SN3N203-G | PNP | Connettore M8 Snap M8 plug connector |
| SN3M203-G | NPN | |
| SS4N225-G | PNP | Cavo 2.5m 2.5m cable |
| SS4M225-G | NPN | |
| SS3N203-G | PNP | Connettore M8 Snap M8 plug connector |
| SS3M203-G | NPN | |

Sono tutti dotati di un cavo piatto a tre fili e di un led.



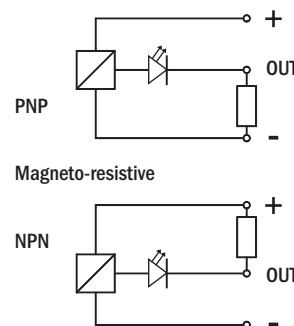
| OF... | SWP-... |
|---------|---------|
| OF14... | SWP-014 |
| OF20... | SWP-020 |
| OF30... | SWP-030 |

Nelle versioni ...S i sensori sono annegati nelle apposite cave. Nelle altre versioni è necessaria una fascetta esterna (SWP-...).

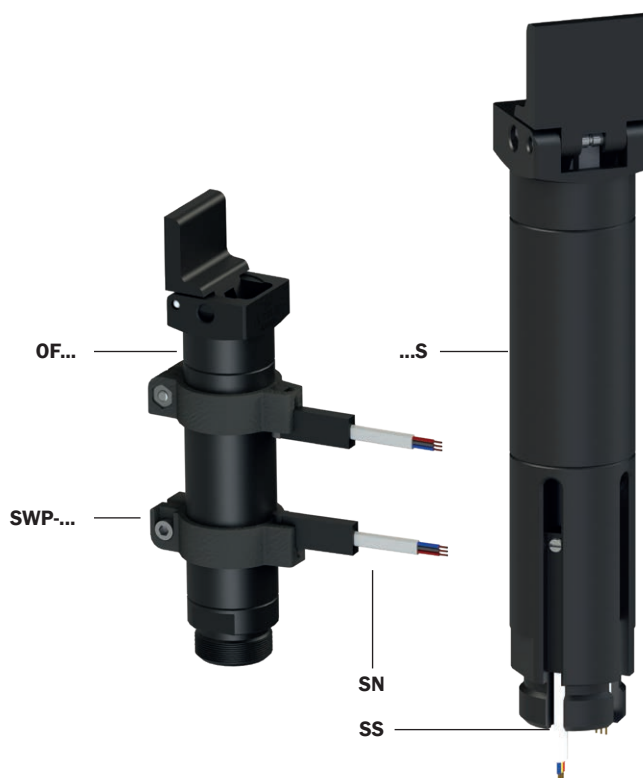
Optional magnetic sensors

The operating position is detected by magnetic proximity sensors (optional) through a magnet placed on the piston. The use of magnetic proximity sensors is to be avoided in the vicinity of large masses of ferromagnetic material or intense magnetic fields as this may cause detection problems.

The sensors that can be used are:



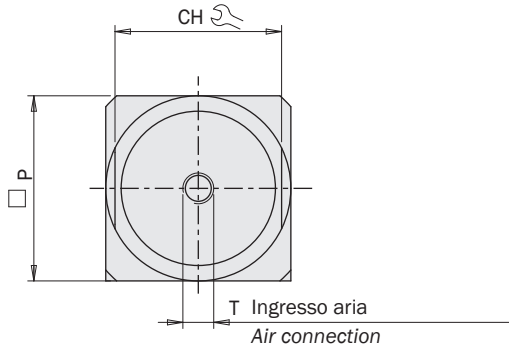
They are all provided with a 3-wire flat cable and a LED.



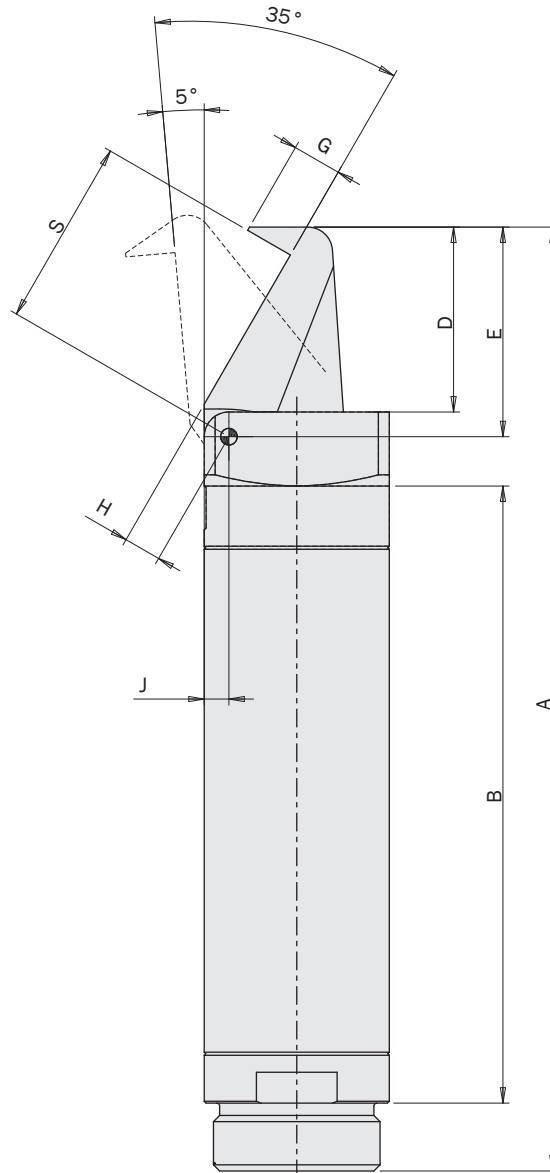
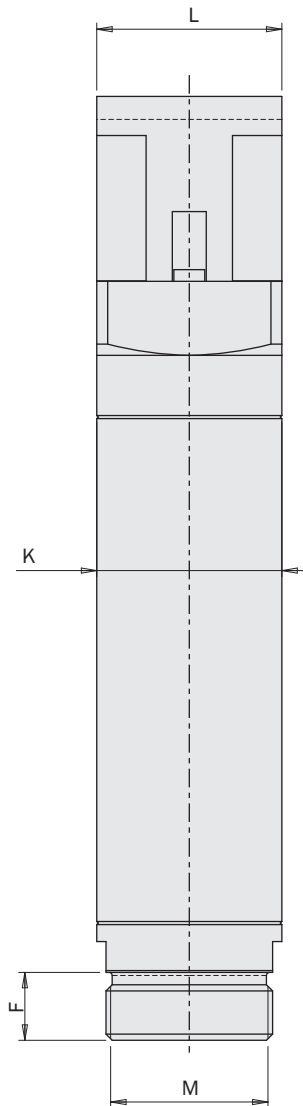
In the ...S versions, the sensors are embedded in their slots. In the other versions, an external bracket (SWP-...) is required.

Dimensioni (mm)
Dimensions (mm)

OFA...



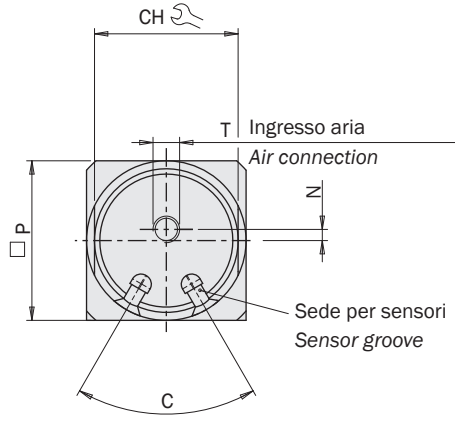
| | OFA14-35 | OFA20-35 | OFA30-35 |
|----|----------|----------|----------|
| A | 74 | 106 | 153 |
| B | 45.5 | 68.5 | 100 |
| D | 14 | 20.5 | 30 |
| E | 16 | 23 | 34 |
| F | 5.5 | 8 | 11 |
| G | 4.5 | 6 | 8 |
| H | 3.4 | 3.9 | 6 |
| J | 2 | 2.5 | 4 |
| K | Ø14 | Ø20 | Ø30 |
| L | 14 | 20 | 30 |
| M | M12x1 | M17x1 | M27x1 |
| P | 14 | 20 | 30 |
| S | 13.5 | 20.2 | 30.5 |
| T | M5 | M5 | M5 |
| CH | 12 | 17 | 27 |



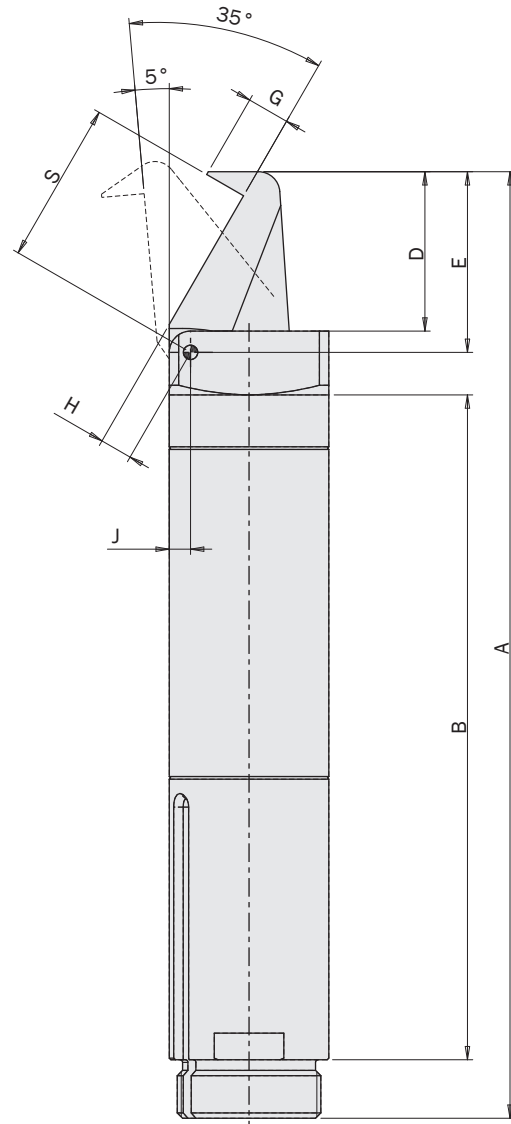
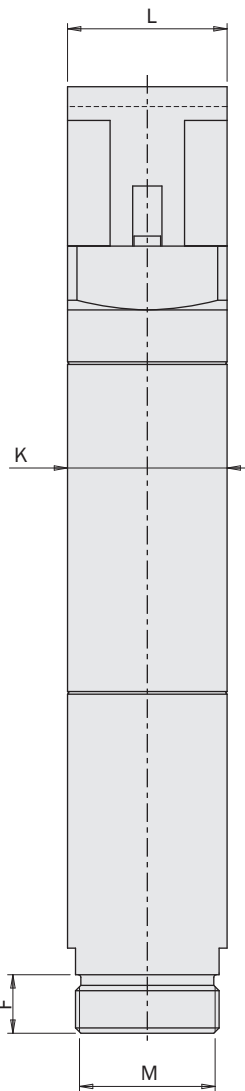
FIRST ANGLE PROJECTION

Dimensioni (mm)
Dimensions (mm)

OFA...S



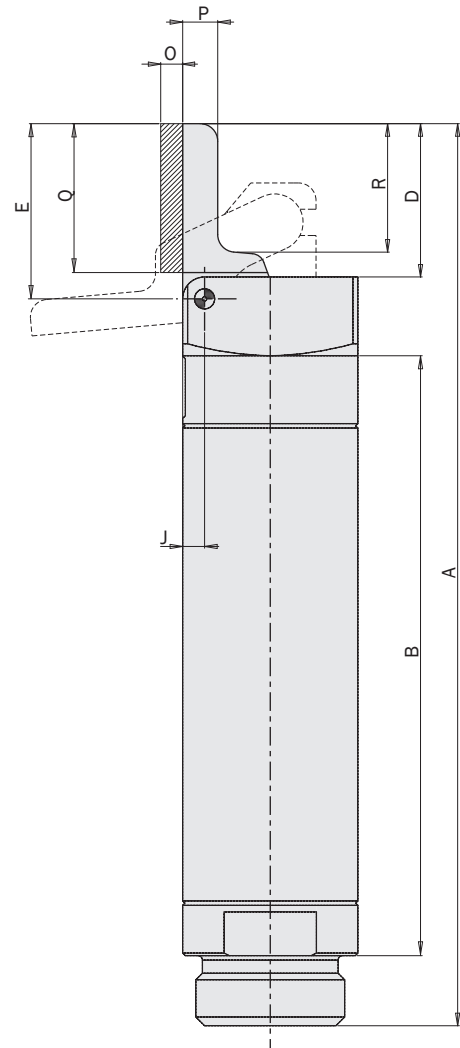
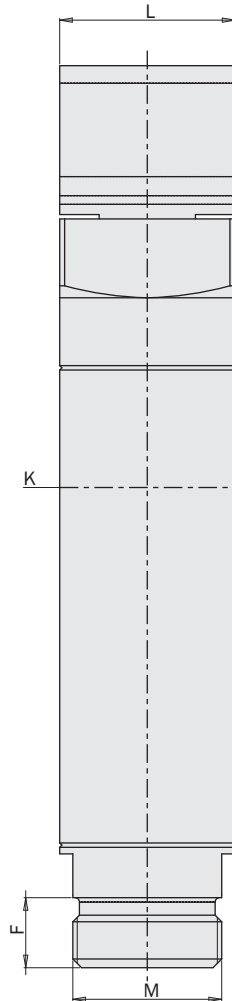
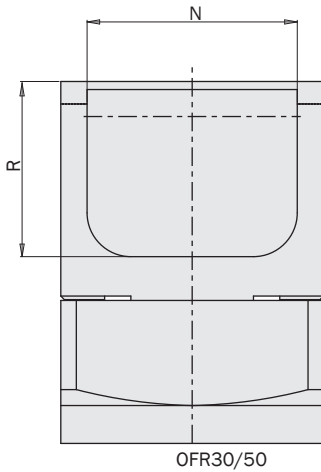
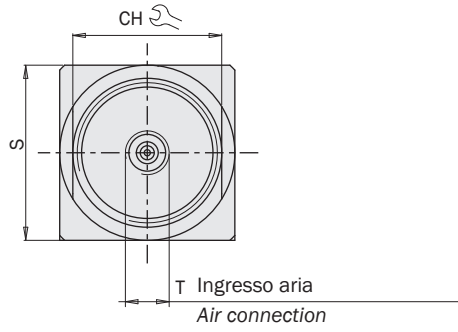
| | OFA20-35S | OFA30-35S |
|----|-----------|-----------|
| A | 120.5 | 178 |
| B | 83 | 125 |
| C | 80° | 60° |
| D | 20.5 | 30 |
| E | 23 | 34 |
| F | 8 | 11 |
| G | 6 | 8 |
| H | 3.9 | 6 |
| J | 2.5 | 4 |
| K | ∅20 | ∅30 |
| L | 20 | 30 |
| M | M17x1 | M27x1 |
| N | 1.5 | - |
| P | 20 | 30 |
| S | 20.2 | 30.5 |
| T | M5 | M5 |
| CH | 17 | 27 |



Dimensioni (mm)
Dimensions (mm)

OFR...

| | A | B | D | E | F | J | K | L | M | N | O | P | Q | R | S | T | CH |
|-----------|-----|------|------|----|-----|-----|-----|----|-------|----|-----|---|----|------|----|----|----|
| OFR14-95 | 72 | 45.5 | 12 | 14 | 5.5 | 2 | Ø14 | 14 | M12x1 | - | - | 3 | - | 9.5 | 14 | M5 | 12 |
| OFR20-95 | 103 | 68.5 | 17.5 | 20 | 8 | 2.5 | Ø20 | 20 | M17x1 | - | - | 4 | - | 14.5 | 20 | M5 | 17 |
| OFR30-95 | 148 | 100 | 25 | 29 | 11 | 4 | Ø30 | 30 | M27x1 | 24 | - | 5 | - | 20 | 30 | M5 | 27 |
| OFR14-95M | 72 | 45.5 | 12 | 14 | 5.5 | 2 | Ø14 | 14 | M12x1 | - | 2.5 | 3 | 11 | 9.5 | 14 | M5 | 12 |
| OFR20-95M | 103 | 68.5 | 17.5 | 20 | 8 | 2.5 | Ø20 | 20 | M17x1 | - | 2.5 | 4 | 15 | 14.5 | 20 | M5 | 17 |
| OFR30-95M | 148 | 100 | 25 | 29 | 11 | 4 | Ø30 | 30 | M27x1 | 24 | 3 | 5 | 20 | 20 | 30 | M5 | 27 |



FIRST ANGLE PROJECTION

Unità Rotanti
Rotary Units

Cambia Utensile
Quick Changer

Profili e Staffe
Profiles and Brackets

Pinze
Grippers

Attuatori Lineari
Linear Actuators

Sospensioni
Suspensions

Taglierini
Nippers

Kit-Robot
Robot Kit

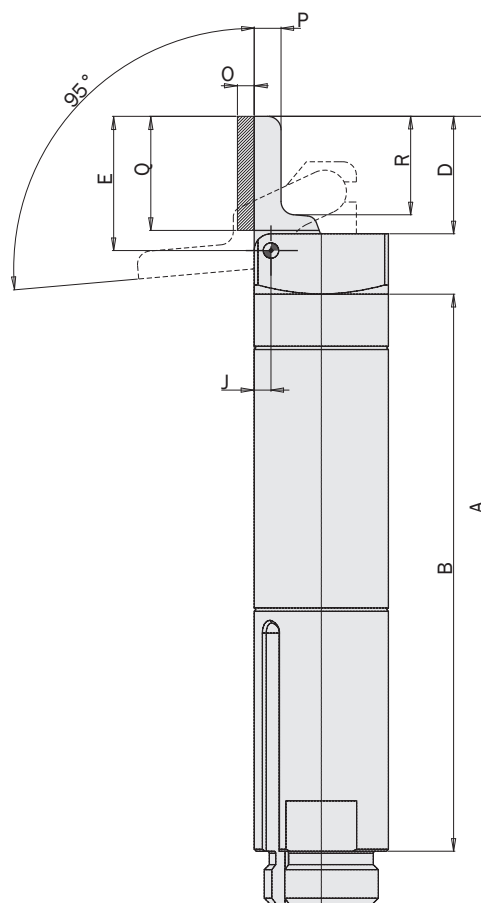
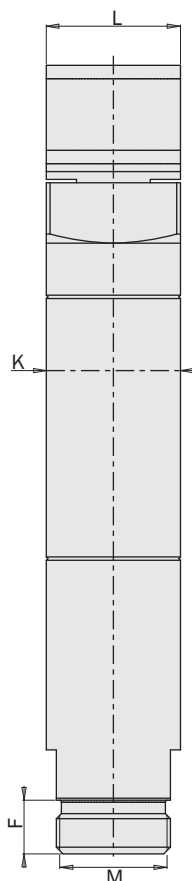
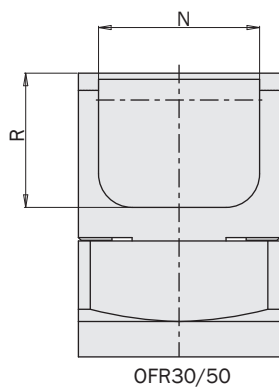
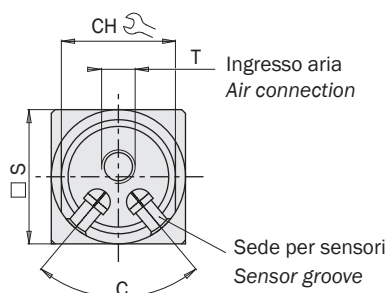
Accessori Opzionali
Options

Sensori
Sensors

Dimensioni (mm)
Dimensions (mm)

OFR...S

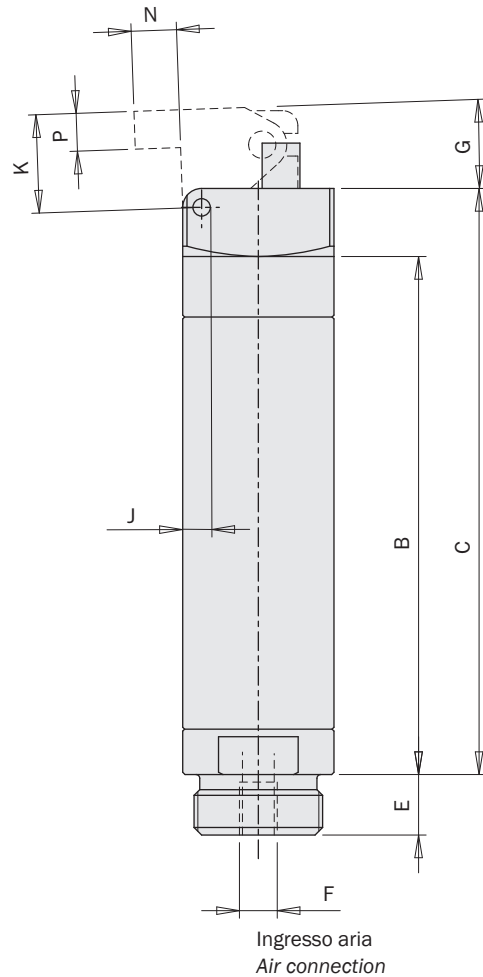
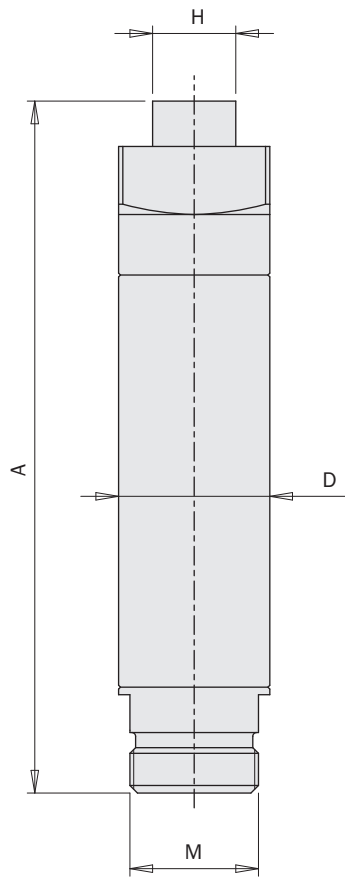
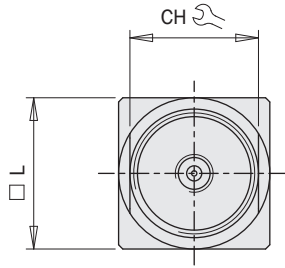
| | A | B | C | D | E | F | J | K | L | M | N | O | P | Q | R | S | T | U | CH |
|------------|-------|-----|-----|------|----|----|-----|-----|----|-------|----|-----|---|----|------|----|----|-----|----|
| OFR20-95S | 117.5 | 83 | 80° | 17.5 | 20 | 8 | 2.5 | Ø20 | 20 | M17x1 | - | - | 4 | - | 14.5 | 20 | M5 | 1.5 | 17 |
| OFR30-95S | 173 | 125 | 60° | 25 | 29 | 11 | 4 | Ø30 | 30 | M27x1 | 24 | - | 5 | - | 20 | 30 | M5 | - | 27 |
| OFR20-95SM | 117.5 | 83 | 80° | 17.5 | 20 | 8 | 2.5 | Ø20 | 20 | M17x1 | - | 2.5 | 4 | 15 | 14.5 | 20 | M5 | 1.5 | 17 |
| OFR30-95SM | 173 | 125 | 60° | 25 | 29 | 11 | 4 | Ø30 | 30 | M27x1 | 24 | 3 | 5 | 20 | 20 | 30 | M5 | - | 27 |



Dimensioni (mm)
Dimensions (mm)

OFS...

| | A | B | C | D | E | F | G | H | J | K | L | M | N | P | CH |
|----------|------|------|------|-----|-----|----|----|----|-----|----|----|-------|----|---|----|
| OFS14-90 | 64 | 45.5 | 54.5 | Ø14 | 5.5 | M5 | 2° | 8 | 2 | 9 | 14 | M12x1 | 4 | 4 | 12 |
| OFS20-90 | 91.5 | 68.5 | 77.5 | Ø20 | 8 | M5 | 2° | 11 | 2.5 | 13 | 20 | M17x1 | 6 | 5 | 17 |
| OFS30-90 | 134 | 100 | 112 | Ø30 | 11 | M5 | 2° | 14 | 4 | 20 | 30 | M27x1 | 11 | 6 | 27 |

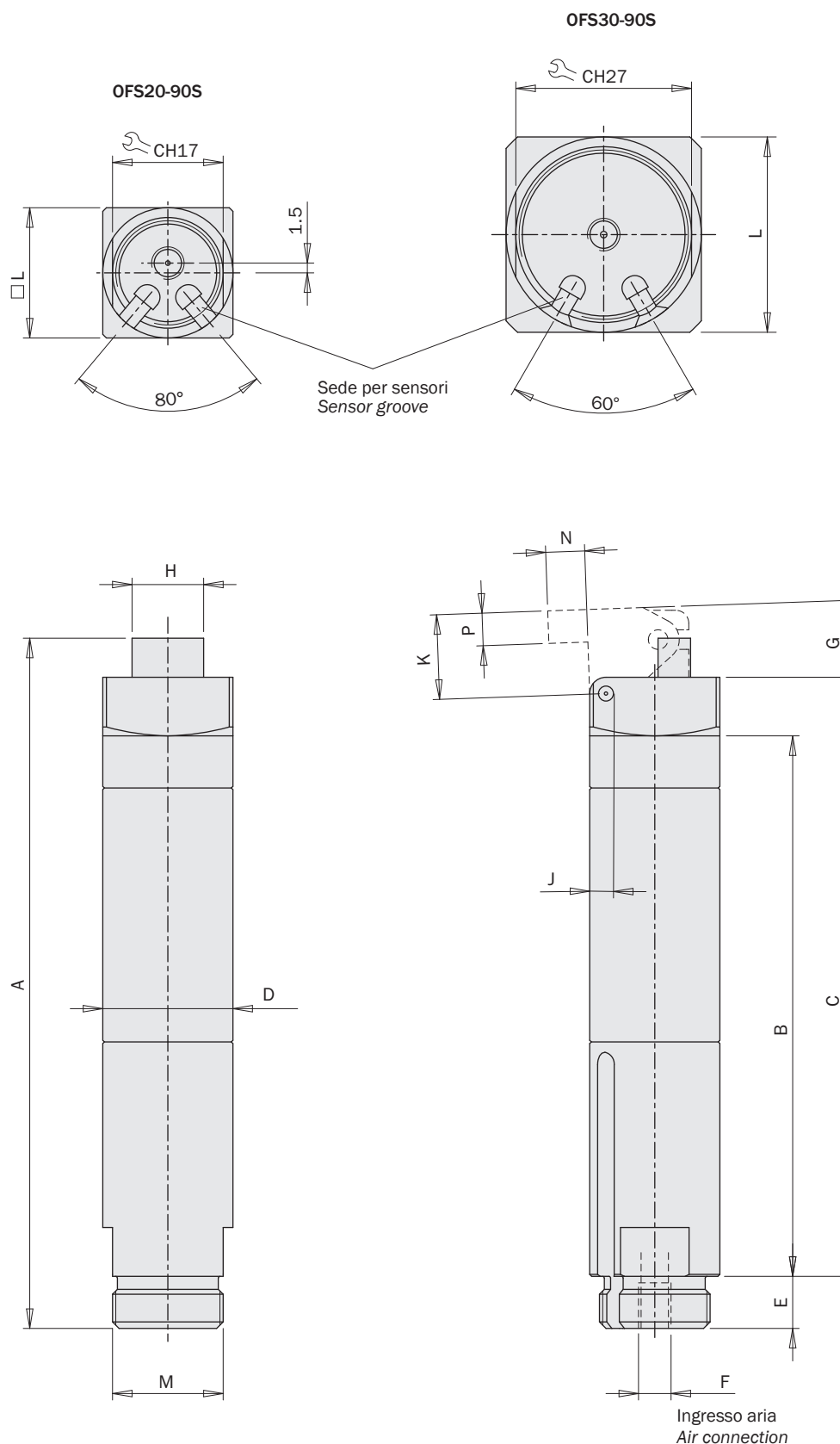


FIRST ANGLE PROJECTION

Dimensioni (mm)
Dimensions (mm)

OFS...S

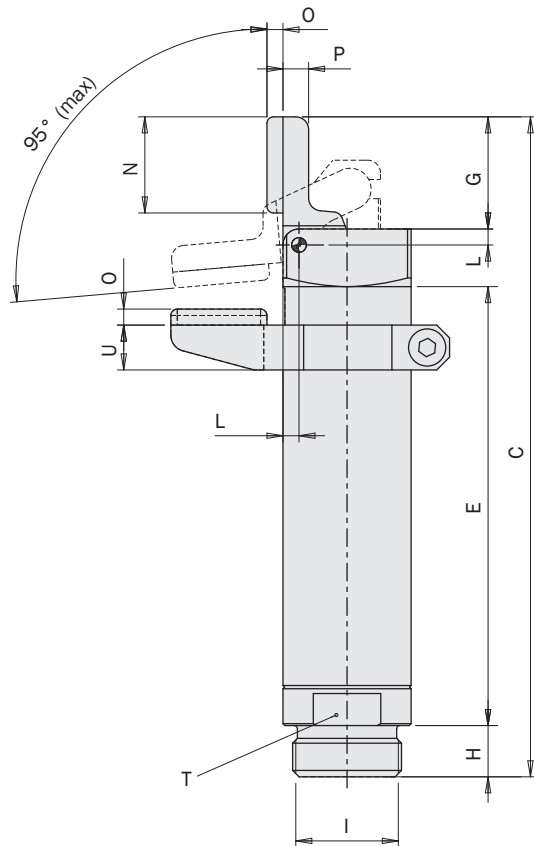
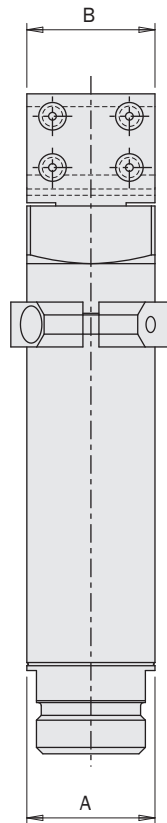
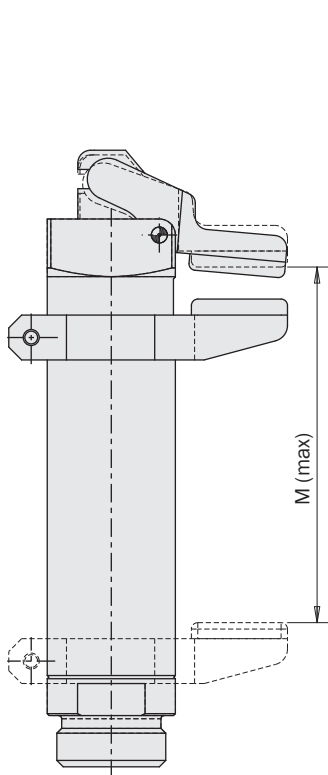
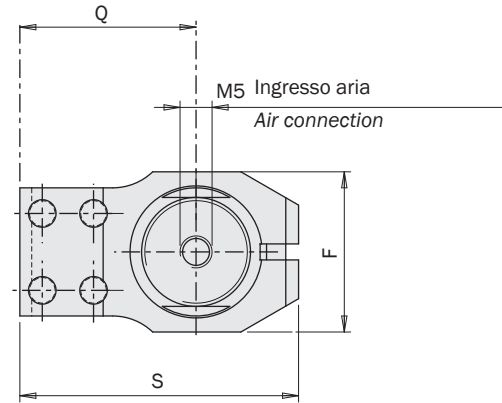
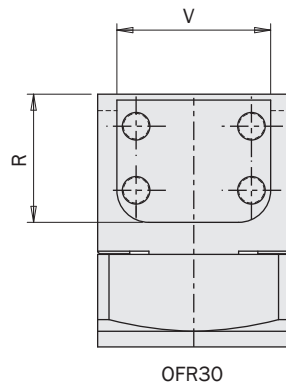
| | A | B | C | D | E | F | G | H | J | K | L | M | N | P |
|-----------|-----|-----|-----|-----|----|----|----|----|-----|----|----|-------|----|---|
| OFS20-90S | 106 | 83 | 92 | Ø20 | 8 | M5 | 2° | 11 | 2.5 | 13 | 20 | M17x1 | 6 | 5 |
| OFS30-90S | 159 | 125 | 137 | Ø30 | 11 | M5 | 2° | 14 | 4 | 20 | 30 | M27x1 | 11 | 6 |



Dimensioni (mm)
Dimensions (mm)

OFR...-95G

| | A | B | C | E | F | G | H | I | L | M | N | O | P | Q | R | S | T | U | V |
|-----------|-----|----|-----|------|----|------|-----|-------|-----|------|----|-----|---|------|----|------|----|-----|----|
| OFR14-95G | Ø14 | 14 | 72 | 45.5 | 19 | 12 | 5.5 | M12x1 | 2 | 32.5 | 11 | 2.5 | 3 | 19 | - | 32 | 12 | 7.5 | - |
| OFR20-95G | Ø20 | 20 | 103 | 68.5 | 25 | 17.5 | 8 | M17x1 | 2.5 | 55.5 | 15 | 2.5 | 4 | 27.5 | - | 43.5 | 17 | 7 | - |
| OFR30-95G | Ø30 | 30 | 148 | 100 | 37 | 25.5 | 11 | M27x1 | 4 | 84 | 20 | 3 | 5 | 40 | 20 | 63 | 27 | 9 | 24 |

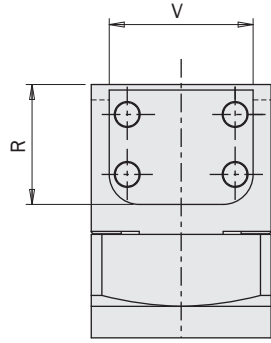


FIRST ANGLE
PROJECTION

Dimensioni (mm)
Dimensions (mm)

OFR...-95SG

| | A | B | C | D | E | F | G | H | I | K | L | M | N | O | P | Q | R | S | T | U | V |
|------------|-----|----|-------|-----|-------|----|------|----|-------|-----|-----|-----|----|-----|---|------|----|------|----|---|----|
| OFR20-95SG | Ø20 | 20 | 117.5 | 1.5 | 83 | 25 | 17.5 | 8 | M17x1 | 80° | 2.5 | 75 | 15 | 2.5 | 4 | 27.5 | - | 43.5 | 17 | 7 | - |
| OFR30-95SG | Ø30 | 30 | 173 | - | 124.7 | 37 | 25 | 11 | M27x1 | 60° | 4 | 113 | 20 | 3 | 5 | 40 | 20 | 63 | 27 | 9 | 24 |



OFR30

