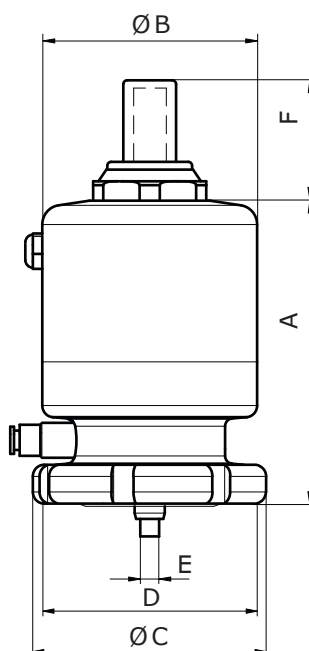


Specification Sheet

# NovAseptic® Valve, Pneumatic Stainless Steel Actuator, Normally Closed, NC



Nominal Dimensions in mm (in.)

PA##	A	B	C	D*	E	F	Compatible Valve Body	
							NA##	NU###
PA12	69.7 (2.744)	40.0 (1.575)	47.0 (1.850)	TR40 x 2	M5	31.0 (1.220)	NA12	NU050
PA18	78.0 (3.071)	57.0 (2.244)	62.0 (2.441)	TR55 x 2	M5	31.0 (1.220)	NA18	NU075
PA25	96.1 (3.783)	72.0 (2.835)	85.0 (3.346)	TR75 x 2	M6	31.0 (1.220)	NA25	NU100
PA38	100.8 (3.969)	85.0 (3.346)	95.0 (3.740)	TR85 x 2	M6	31.0 (1.220)	NA38	NU150
PA51	143.3 (5.642)	102.0 (4.016)	120.0 (4.724)	TR109 x 2	M6	31.0 (1.220)	NA51	NU200
PA76	161.7 (6.366)	125.0 (4.921)	159.0 (6.260)	TR146 x 2	M6	37.4 (1.472)	NA76	NU300

\* Non-standard thread, special thread to fit NovAseptic® actuators.

## Specifications

Net Weight (approximate)						
Actuator	PA12	PA18	PA25	PA38	PA51	PA76
Weight kg (lb)	0.5 (1.1)	1.0 (2.20)	1.9 (4.19)	1.5 (3.31)	5.3 (11.7)	9.0 (19.8)

Material						
Cover			Indicator			
Stainless Steel in Compliance with			Plastic in Compliance with			
Material Code	EN 1.4305	ASTM® 303	POM C			

Design Pressure							
		PA12	PA18	PA25	PA38	PA51	PA76
Max	bar(g)	6.0	6.0	6.0	6.0	6.0	3.0
	(psi(g))	(87)	(87)	(87)	(87)	(87)	(43)
Min	bar(g)	-1.0	-1.0	-1.0	-1.0	-1.0	-1.0
	(psi(g))	(-14)	(-14)	(-14)	(-14)	(-14)	(-14)

Air Feed Pressure							
		PA12	PA18	PA25	PA38	PA51	PA76
Max	bar(g)	7.0	7.0	7.0	7.0	7.0	8.0
	(psi(g))	(101)	(101)	(101)	(101)	(101)	(116)
Min	bar(g)	5.5	5.5	5.5	5.5	5.5	7.0
	(psi(g))	(80)	(80)	(80)	(80)	(80)	(102)
Pneumatic Fast Fitting mm (in.)		4 (0.16)	4 (0.16)	6 (0.24)	6 (0.24)	6 (0.24)	6 (0.24)

Specifications	
Surface Roughness	External surface Ra ≤ 1.6 µm (63 µin)
Environment Temperature	0 to 70 °C (32 to 158 °F)
Note	The valve body can only be used with NovAseptic® diaphragm, actuator, and position indicator (optional). The applied diaphragm and actuator have different design temperature and/or pressure limits. The weakest component in the assembled product determines the maximum operating/design temperature and pressure limits.
Labeling	Each valve body is individually marked for full traceability and heat No. according to our QA routines.
Packaging	All open ends on the valve body are protected with plastic covers on delivery and packaged in a closed box.
Quality Control	Our quality assurance system guarantees the control and traceability at all stages of the manufacturing.
Regulatory	<ul style="list-style-type: none"> <li>The NovAseptic® valves, used with gas group 2 and liquid group 1, fall under the art. 4 § 3 of the Pressure Equipment Directive (2014/68/EU). They are not CE marked. They have been designed and manufactured following the sound engineering practices.</li> <li>NovAseptic® valves follow the applicable ASME BPE guideline sections.</li> </ul>
Options	For non-standard NovAseptic® valve body options, please contact us for further information

## Technical Assistance

For more information, please visit **SigmaAldrich.com**  
for up-to-date worldwide contact information

