



115.111.129.98KWVE..-BFührungswagen

Carriages KWVE15-B (Series KWVE..-B)

standard carriage, four-row, full complement ball set

The datasheet is only an overview of dimensions and basic load ratings of the selected product. Please always observe all the guidelines in these overview pages. Further information is given on many products under the menu item "Description". You can also order comprehensive information via the Catalogue ordering system (https://www.schaeffler.de/content.schaeffler.de/en/news_media/index.jsp) or by telephone on +49 (91 32) 82 - 28 97.

H	24 mm
B	47 mm
L	61,2 mm
1)	Locating face
2)	Marking
3)	Lubrication nipple to DIN 3 405 M3 is supplied loose
A ₁	16 mm
A ₂	4,5 mm
A ₃	4,3 mm
A ₄	3,2 mm
a _L max	53 mm a L and a R are dependent on the length l max of the guideway
a _L min	20 mm a L and a R are dependent on the length l max of the guideway
a _R max	53 mm a L and a R are dependent on the length l max of the guideway
a _R min	20 mm a L and a R are dependent on the length l max of the guideway
b	15 mm Tolerance: -0,005/-0,03
G ₂	M5 For screws to DIN ISO 4762-12.9 Max. tightening torque in Nm: M5 = 5,8 M6 = 10 M8 = 24 M10 = 41 M12 = 83 M14 = 140

If there is a possibility of settling, the fixing screws should be secured against rotation.

h 15 mm

H₁ 4,3 mm

h₁ 8,15 mm

H₄ 7,6 mm

H₅ 4,75 mm

J_B 38 mm

J_L 30 mm

j_L 60 mm

J_{L6} 9,1 mm

J_{LZ} 26 mm

K₁ M4 For screws to DIN ISO 4762-12.9

Max. tightening torque in Nm:

M3 = 2,5

M4 = 5

M5 = 10

M6 = 17

M8 = 41

M10 = 83

M12 = 140

M14 = 220

M16 = 340

If there is a possibility of settling, the fixing screws should be secured against rotation

K₃ M4 For screws to DIN ISO 4762-12.9

Max. tightening torque in Nm:

M3 = 2,5

M4 = 5

M5 = 10

M6 = 17

M8 = 41

M10 = 83

M12 = 140

M14 = 220

M16 = 340

If there is a possibility of settling, the fixing screws should be secured against rotation

K₆ M4 For screws to DIN 7984-8.8

Max. tightening torque in Nm:

M4 = 2

M5 = 4

M6 = 8

M8 = 12

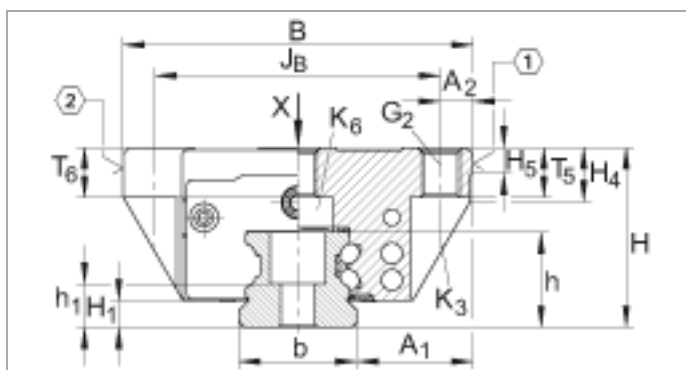
M10 = 35

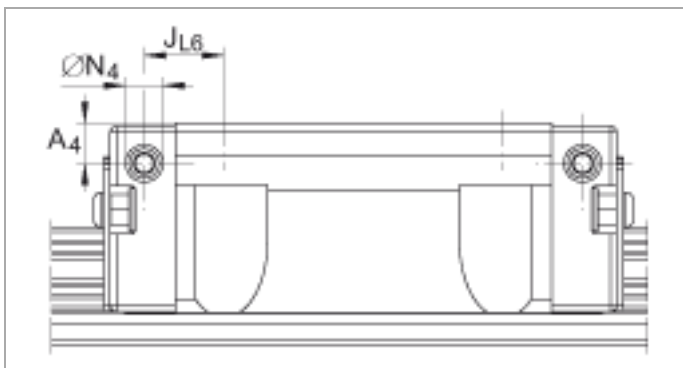
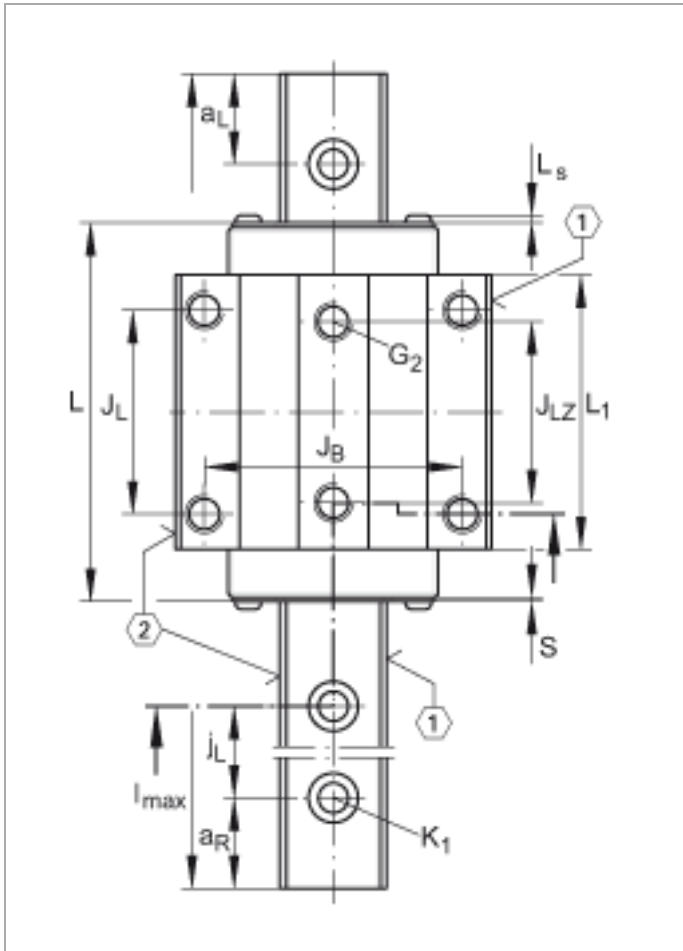
If there is a possibility of settling, the fixing screws should be secured against rotation

L₁ 39,8 mm

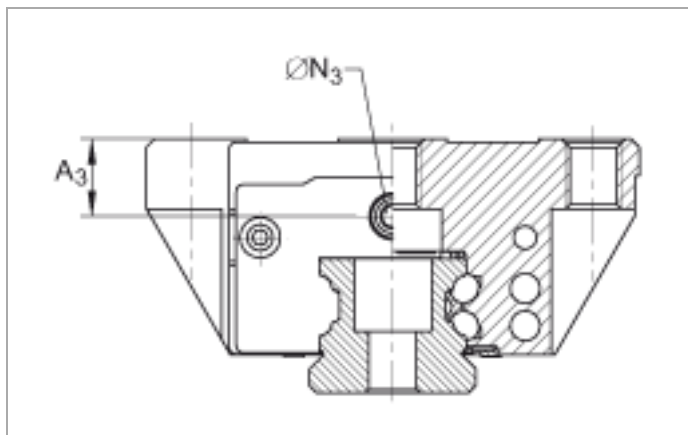
l_{max}	1200 mm	Maximum length of single-piece guideways; longer guideways are supplied in several sections and are marked accordingly. Maximum single-piece guideway length of 6 m by agreement.
L_s	1,3 mm	
N_3	2,57 mm	Maximum permissible screw depth for lubrication connector: 5,5 mm
N_4	2,57 mm	Maximum permissible screw depth for lubrication connector: 5,5 mm
S	0,8 mm	
T_5	7 mm	
T_6	5,8 mm	
W_6	6 mm	Width across flats
m_w	0,2 kg	Mass of carriage
m_s	1,44 kg/m	Mass of guideway Calculation of basic load rating according to DIN 636, increased basic dynamic load rating possible on the basis of practical experience.
C	7200 N	Basic dynamic load rating
C_0	14500 N	Basic static load rating
M_{0x}	150 Nm	Static moment rating about X axis
M_{0y}	100 Nm	Static moment rating about Y axis
M_{0z}	100 Nm	Static moment rating about Z axis

The new carriages cannot be used on the previous guideways TKVD15(-U)

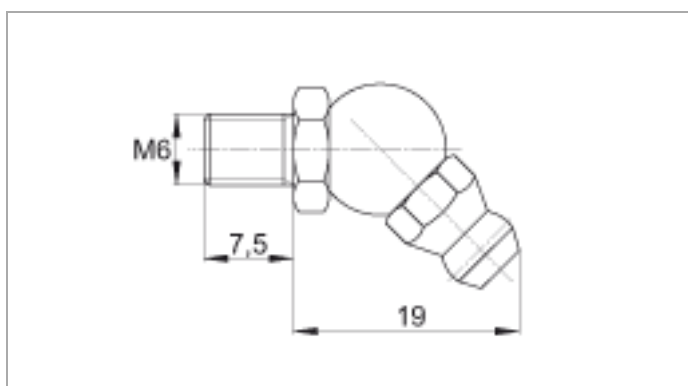




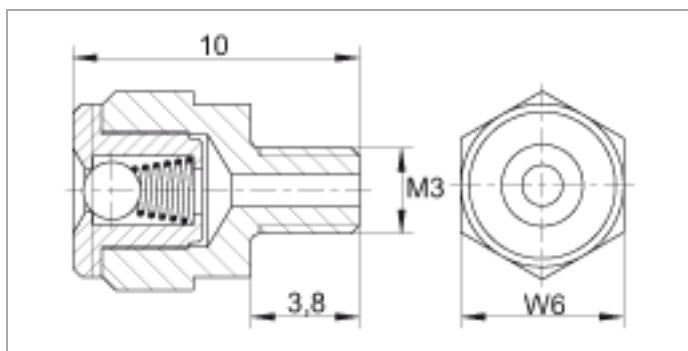
Lubrication connector on lateral face



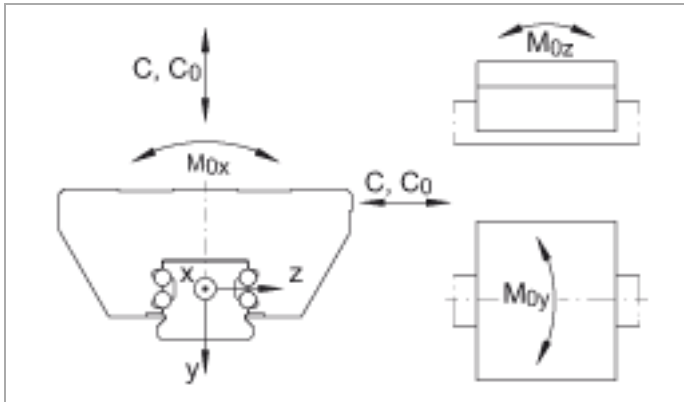
Lubrication connector on end face



Lubrication nipple 3)



Lubrication nipple 3)



Load directions