

# X20(c)DC1396

Data sheet  
3.44 (October 2024)



## **Publishing information**

B&R Industrial Automation GmbH

B&R Strasse 1

5142 Eggelsberg

Austria

Telephone: +43 7748 6586-0

Fax: +43 7748 6586-26

[office@br-automation.com](mailto:office@br-automation.com)

## **Disclaimer**

All information in this document is current as of its creation. The contents of this document are subject to change without notice. B&R Industrial Automation GmbH assumes unlimited liability in particular for technical or editorial errors in this document only (i) in the event of gross negligence or (ii) for culpably inflicted personal injury. Beyond that, liability is excluded to the extent permitted by law. Liability in cases in which the law stipulates mandatory unlimited liability (such as product liability) remains unaffected. Liability for indirect damage, consequential damage, business interruption, loss of profit or loss of information and data is excluded, in particular for damage that is directly or indirectly attributable to the delivery, performance and use of this material.

B&R Industrial Automation GmbH notes that the software and hardware designations and brand names of the respective companies used in this document are subject to general trademark, brand or patent protection.

Hardware and software from third-party suppliers referenced in this document is subject exclusively to the respective terms of use of these third-party providers. B&R Industrial Automation GmbH assumes no liability in this regard. Any recommendations made by B&R Industrial Automation GmbH are not contractual content, but merely non-binding information for which no liability is assumed. When using hardware and software from third-party suppliers, the relevant user documentation of these third-party suppliers must additionally be consulted and, in particular, the safety guidelines and technical specifications contained therein must be observed. The compatibility of the products from B&R Industrial Automation GmbH described in this document with hardware and software from third-party suppliers is not contractual content unless this has been separately agreed in individual cases; in this respect, warranty for such compatibility is excluded in any case, and it is the sole responsibility of the customer to verify this compatibility in advance.

## **Version history**

B&R makes every effort to keep documents as current as possible. The most current versions are available for download on the B&R website ([www.br-automation.com](http://www.br-automation.com)).

# 1 General information

## 1.1 Other applicable documents

For additional and supplementary information, see the following documents.

### Other applicable documents

Document name	Title
MAX20	<a href="#">X20 System user's manual</a>

## 1.2 Coated modules

Coated modules are X20 modules with a protective coating for the electronics component. This coating protects X20c modules from condensation and corrosive gases.

The modules' electronics are fully compatible with the corresponding X20 modules.



For simplification purposes, only images and module IDs of uncoated modules are used in this data sheet.

The coating has been certified according to the following standards:

- Condensation: BMW GS 95011-4, 2x 1 cycle
- Corrosive gas: EN 60068-2-60, method 4, exposure 21 days



## 1.3 Order data


Order number	Short description	Figure
	<b>Counter functions</b>	
X20DC1396	X20 digital counter module, 1 ABR incremental encoder, 24 V, 100 kHz input frequency, 4x evaluation	
X20cDC1396	X20 digital counter module, coated, 1 ABR incremental encoder, 24 V, 100 kHz input frequency, 4x evaluation	
	<b>Required accessories</b>	
	<b>Bus modules</b>	
X20BM11	X20 bus module, 24 VDC keyed, internal I/O power supply connected through	
X20BM15	X20 bus module, with node number switch, 24 VDC keyed, internal I/O power supply connected through	
X20cBM11	X20 bus module, coated, 24 VDC keyed, internal I/O power supply connected through	
	<b>Terminal blocks</b>	
X20TB12	X20 terminal block, 12-pin, 24 VDC keyed	

Table 1: X20DC1396, X20cDC1396 - Order data

## 1.4 Module description

The module is equipped with 1 input for an ABR incremental encoder with 24 V encoder signal.

Functions:

- [ABR incremental encoder](#)
- [Monitoring the encoder power supply](#)

### **ABR incremental encoder**

The module provides 1 input for ABR incremental encoders. This allows the detection of position (linear) or angular (rotating) changes in ABR encoders.

### **Monitoring the supply voltage**

The encoder power supply voltage is monitored.

## 2 Technical description

### 2.1 Technical data

Order number	X20DC1396	X20cDC1396
Short description		
I/O module	1 ABR incremental encoder 24 V	
General information		
Input voltage	24 VDC -15% / +20%	
B&R ID code	0x1BAC	0xE502
Status indicators	I/O function per channel, operating state, module status	
Diagnostics		
Module run/error	Yes, using LED status indicator and software	
Power consumption		
Bus	0.01 W	
Internal I/O	1.4 W	
Additional power dissipation caused by actuators (resistive) [W]	-	
Type of signal lines	Shielded lines must be used for all signal lines.	
Certifications		
CE	Yes	
UKCA	Yes	
ATEX	Zone 2, II 3G Ex nA nC IIA T5 Gc IP20, Ta (see X20 user's manual) FTZÜ 09 ATEX 0083X	
UL	cULus E115267 Industrial control equipment	
HazLoc	cCSAus 244665 Process control equipment for hazardous locations Class I, Division 2, Groups ABCD, T5	
DNV	Temperature: <b>B</b> (0 to 55°C) Humidity: <b>B</b> (up to 100%) Vibration: <b>B</b> (4 g) EMC: <b>B</b> (bridge and open deck)	
CCS	Yes	-
LR	ENV1	
KR	Yes	
ABS	Yes	
BV	<b>EC33B</b> Temperature: 5 - 55°C Vibration: 4 g EMC: Bridge and open deck	
KC	Yes	-
Digital inputs		
Quantity	1	
Nominal voltage	24 VDC	
Input characteristics per EN 61131-2	Type 1	
Input current at 24 VDC	Approx. 3.3 mA	
Input circuit	Sink	
Input filter		
Hardware	≤2 µs	
Software	-	
Connection type	3-wire connections	
Input resistance	7.19 kΩ	
Additional functions	Home enable switch	
Switching threshold		
Low	<5 VDC	
High	>15 VDC	
Insulation voltage between channel and bus	500 V <sub>eff</sub>	
ABR incremental encoder		
Encoder inputs	24 V, asymmetrical	
Counter size	16/32-bit	
Input frequency	Max. 100 kHz	
Evaluation	4x	
Encoder power supply	Module-internal, max. 600 mA	
Input filter		
Hardware	≤2 µs	
Software	-	

Table 2: X20DC1396, X20cDC1396 - Technical data


## Technical description

Order number	X20DC1396	X20cDC1396
Input current at 24 VDC	Approx. 1.3 mA	
Input resistance	18.4 kΩ	
Switching threshold		
Low	<5 VDC	
High	>15 VDC	
Overload characteristics of encoder power supply	Short-circuit proof, overload-proof	
Insulation voltage between encoder and bus	500 V <sub>eff</sub>	
Electrical properties		
Electrical isolation	Bus isolated from encoder and reference enable switch Encoder not isolated from reference enable switch	
Operating conditions		
Mounting orientation		
Horizontal	Yes	
Vertical	Yes	
Installation elevation above sea level		
0 to 2000 m	No limitation	
>2000 m	Reduction of ambient temperature by 0.5°C per 100 m	
Degree of protection per EN 60529	IP20	
Ambient conditions		
Temperature		
Operation		
Horizontal mounting orientation	-25 to 60°C	
Vertical mounting orientation	-25 to 50°C	
Derating	-	
Storage	-40 to 85°C	
Transport	-40 to 85°C	
Relative humidity		
Operation	5 to 95%, non-condensing	Up to 100%, condensing
Storage	5 to 95%, non-condensing	
Transport	5 to 95%, non-condensing	
Mechanical properties		
Note	Order 1x terminal block X20TB12 separately. Order 1x bus module X20BM11 separately.	Order 1x terminal block X20TB12 separately. Order 1x bus module X20cBM11 separately.
Pitch	12.5 <sup>+0.2</sup> mm	

Table 2: X20DC1396, X20cDC1396 - Technical data

## 2.2 LED status indicators

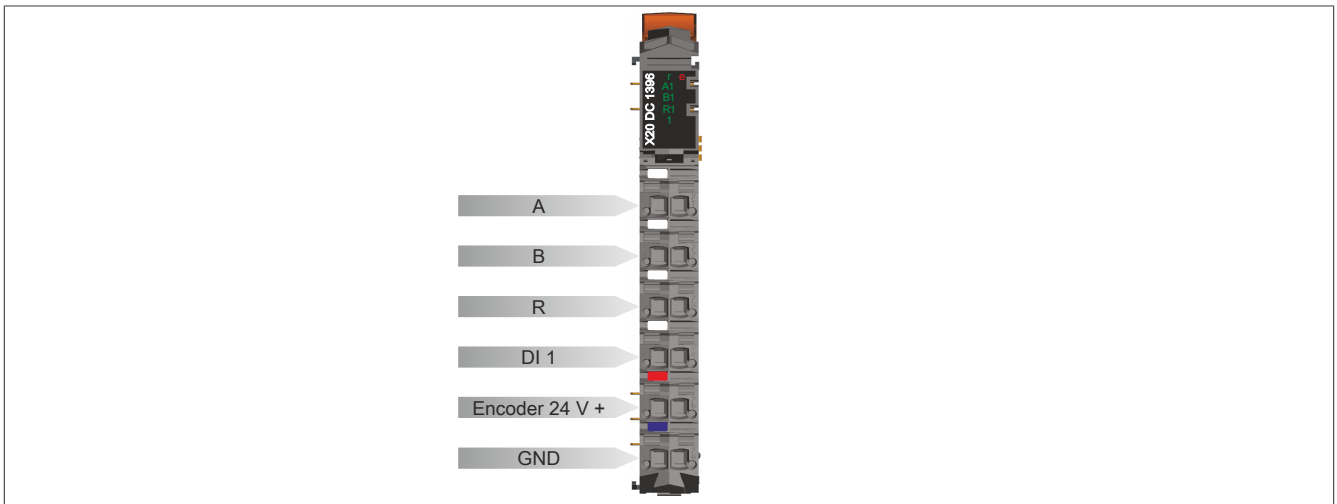
For a description of the various operating modes, see section "Additional information - Diagnostic LEDs" in the X20 System user's manual.

Figure	LED	Color	Status	Description
	r	Green	Off	No power to module
			Single flash	RESET mode
			Double flash	BOOT mode (during firmware update) <sup>1)</sup>
			Blinking	PREOPERATIONAL mode
			On	RUN mode
	e	Red	Off	No power to module or everything OK
			On	Error or reset status
	A1	Green		Input state of counter input A
	B1	Green		Input state of counter input B
	R1	Green		Input state of reference pulse R
	1	Green		Input state - Digital input

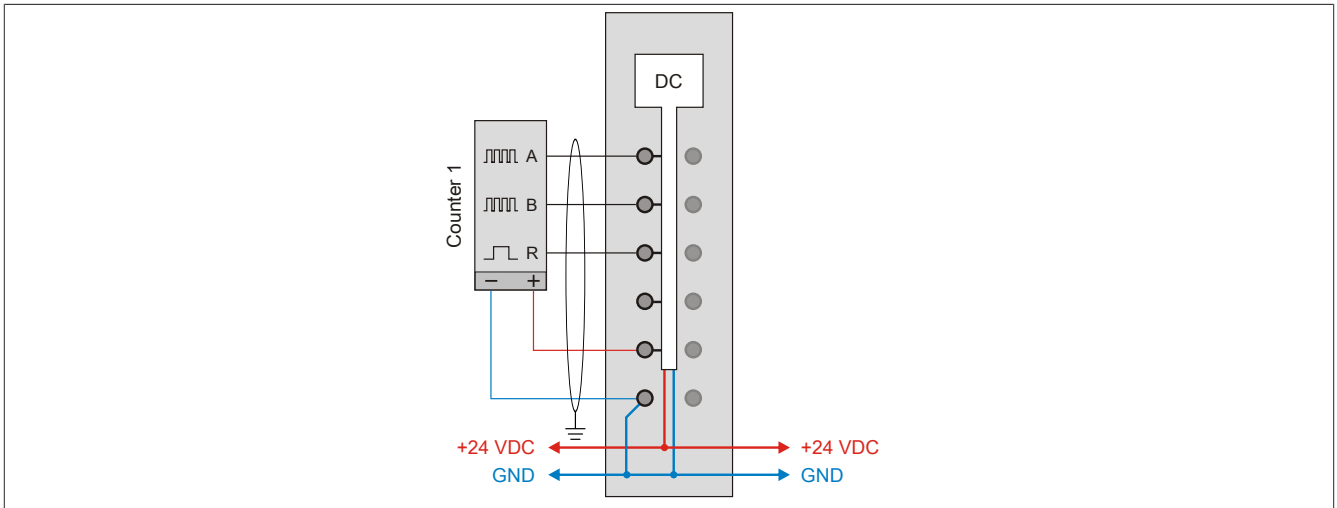
1) Depending on the configuration, a firmware update can take up to several minutes.

## 2.3 Pinout

Shielded cables must be used for all signal lines.

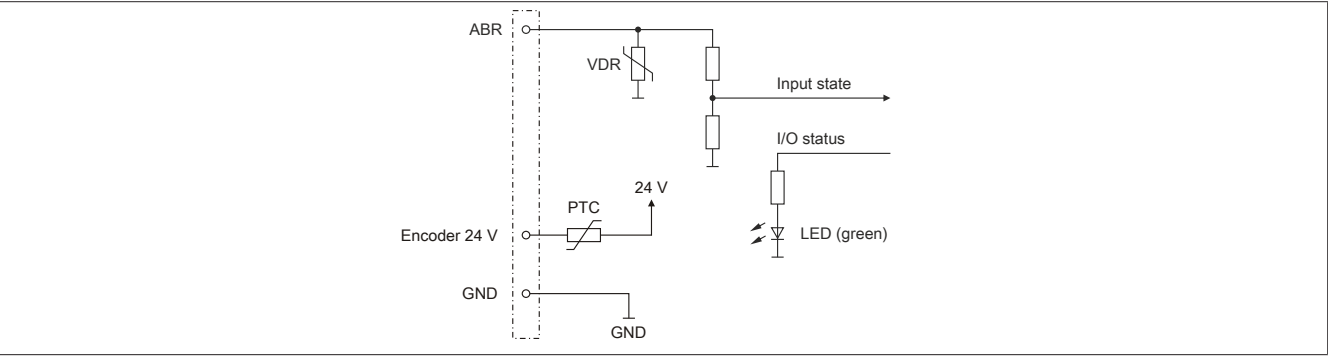


## 2.4 Connection example

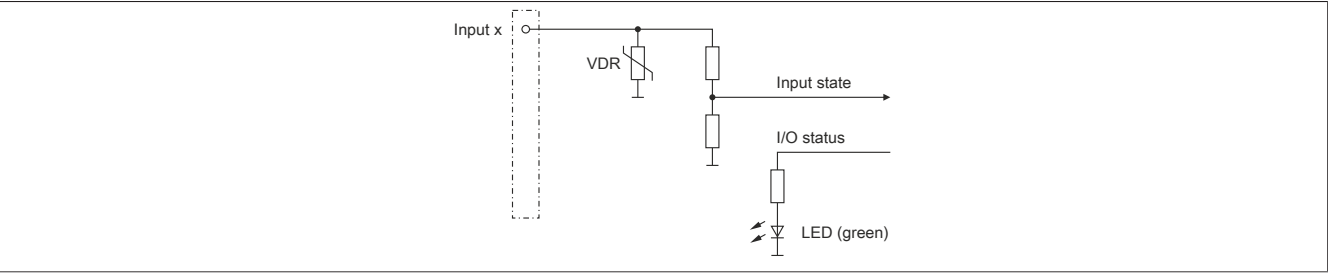


2.5 Input circuit diagram

Counter inputs



Standard input





## 3 Function description

### 3.1 ABR incremental encoder

This module is equipped with 1 input for ABR incremental encoders.

#### 3.1.1 General information

Incremental encoders are sensors for detecting position (linear) or angular (rotating) changes that can detect distance and direction of travel or an angular change and direction of rotation.

In contrast to continuously operating measuring systems such as servo-potentiometers, incremental encoders have a measurement scale with repeating periodic graduation lines. The measurement is based on the determined direction and a count. Rotating optical encoders are the most commonly used.

Incremental encoders (in contrast to absolute encoders) may need to be homed after switching on since changes in position are not detected when in the switched-off state.

Typical applications are determining position and speed in automation technology.

#### 3.1.2 Signal evaluation

When a movement is performed, the two sensors emit 2 signals (A and B) with an electrical phase shift of 90°.

The module determines the direction from these 2 signals and counts the pulses. This allows direct conclusions to be drawn about the scale of measurement (path or angle).

#### 3.1.3 Homing

After switching on the power supply, the incremental encoder only measures changes compared to the switch-on position. For many applications however, knowledge of the absolute position is required. For this reason, most angular encoders output a reference pulse (zero pulse, reference mark) once per revolution on a third output (reference signal R). After switching on, the encoder must be rotated until the reference pulse has been detected. The absolute angle is then available after one revolution at the latest.

Positioning systems with incremental encoders perform "homing procedures" to an external position sensor (e.g. limit switch) after switching on. From this point, the next reference pulse of the incremental encoder is used as an accurate reference point.



#### Information:

The registers are described in "[Homing](#)" on page 14.

##### 3.1.3.1 Homing mode

2 different homing modes can be set:

- Single-shot homing
- Continuous homing

##### 3.1.3.2 Reference enable input

Independent of the homing mode, application of the home position can be prevented by the corresponding voltage level of the reference input (see "[Input state of the digital input](#)" on page 14: Bit 3). The desired setting can be configured by a one-off acyclic write.

##### 3.1.4 Recording the counter value

The counter value of the incremental encoder is displayed as a 16- or 32-bit counter value.

**Information:**

The register is described in "[Counter state of the encoder](#)" on page 13.

## 3.2 Monitoring the encoder power supply

### Monitoring the encoder power supply

The status of the integrated encoder power supply can be read.

Bit	Description
0	24 VDC encoder supply voltage OK
1	24 VDC encoder supply voltage faulty

**Information:**

The register is described in "[Status of encoder power supply](#)" on page 14.

## 4 Commissioning

---

### 4.1 Using the module on the bus controller

Function model 254 "Bus controller" is used by default only by non-configurable bus controllers. All other bus controllers can use other registers and functions depending on the fieldbus used.

For detailed information, see section "Additional information - Using I/O modules on the bus controller" in the X20 user's manual (version 3.50 or later).

#### 4.1.1 CAN I/O bus controller

The module occupies 1 analog logical slot on CAN I/O.

## 5 Register description

### 5.1 General data points

In addition to the registers described in the register description, the module has additional general data points. These are not module-specific but contain general information such as serial number and hardware variant.

General data points are described in section "Additional information - General data points" in the X20 System user's manual.

### 5.2 Function model 0 - Standard and Function model 1 - Standard with 32-bit encoder counter value

The difference between function model 0 and function model 1 is the size of the data type for some registers.

- Function model 0 uses data type INT
- Function model 1 uses data type DINT and partly extended names (specified in brackets).

Register	Name	Data type	Read		Write	
			Cyclic	Acyclic	Cyclic	Acyclic
Configuration						
4104	CfO_EdgeDetectFalling	USINT				•
4106	CfO_EdgeDetectRising	USINT				•
2064	CfO_PresetABR01_1(_32Bit)	(D)INT				•
2068	CfO_PresetABR01_2(_32Bit)	(D)INT				•
512	ConfigOutput24	UINT				•
522	ConfigOutput26	USINT				•
520	ConfigOutput27	USINT				•
Communication						
2116	ReferenceModeEncoder01	USINT			•	
2080	Encoder01	(D)INT	•			
264	Input state of the digital input	USINT	•			
	DigitalInput01	Bit 3				
2118	StatusInput01	USINT	•			
40	Status of encoder power supply	USINT	•			
	PowerSupply01	Bit 0				

## 5.3 Function model 2 - MotionConfiguration

A 16-bit or 32-bit data format can be set in the configuration.

Function model 2 - MotionConfiguration is available starting with hardware upgrade 1.5.0.0.

Register	Name	Data type	Read		Write	
			Cyclic	Acyclic	Cyclic	Acyclic
Configuration						
4104	CfO_EdgeDetectFalling	USINT				•
4106	CfO_EdgeDetectRising	USINT				•
2064	CfO_PresetABR01_1	INT				•
2068	CfO_PresetABR01_2	INT				•
2110	CfO_Encoder01Command	USINT				•
512	ConfigOutput24	UINT				•
522	ConfigOutput26	USINT				•
520	ConfigOutput27	USINT				•
Communication						
2096	RefPulsePos01	INT	•			
2100	RefPulsePos01	DINT	•			
2108	RefPulseCnt01	SINT	•			
2104	Encoder01Reset	BOOL			•	
0	EncOk01	BOOL	•			
2088	Encoder01	INT	•			
2092	Encoder01	DINT	•			
264	Input state of the digital input	USINT	•			
	DigitalInput01	Bit 3				
2118	StatusInput01	USINT	•			
40	Status of encoder power supply	USINT	•			
	PowerSupply01	Bit 0				

## 5.4 Function model 254 - Bus controller

Register	Offset <sup>1)</sup>	Name	Data type	Read		Write	
				Cyclic	Acyclic	Cyclic	Acyclic
Configuration							
4104	-	CfO_EdgeDetectFalling	USINT				•
4106	-	CfO_EdgeDetectRising	USINT				•
2064	-	CfO_PresetABR01_1	INT				•
2068	-	CfO_PresetABR01_2	INT				•
512	-	ConfigOutput24	UINT				•
522	-	ConfigOutput26	USINT				•
520	-	ConfigOutput27	USINT				•
Communication							
2116	0	ReferenceModeEncoder01	USINT			•	
2080	0	Encoder01	INT	•			
264	2	Input state of the digital input	USINT	•			
		DigitalInput01	Bit 3				
2118	4	StatusInput01	USINT	•			
40	3	Status of encoder power supply	USINT	•			
		PowerSupply01	Bit 0				

1) The offset specifies the position of the register within the CAN object.

## 5.5 ABR absolute encoder

### 5.5.1 Counter state of the encoder

Name:

Encoder01

The encoder values are represented as 16-bit or 32-bit counter values in this register.

Data type	Value
INT	-32,768 to 32,767
DINT <sup>1)</sup>	-2,147,483,648 to 2,147,483,647

1) Only in function model 1

## Register description

### 5.5.2 Input state of the digital input

Name:

DigitalInput01

The input states of the encoder and digital input are mapped in this register.

Data type	Value
USINT	See bit structure.

Bit	Name	Value	Information
0	Encoder A	0 or 1	Input state
1	Encoder B	0 or 1	Input state
2	Encoder A + B	0 or 1	Input state of reference pulse
3	DigitalInput01	0 or 1	Input state - Digital input 1
4 - 7	Reserved	-	

### 5.5.3 Status of encoder power supply

Name:

PowerSupply01

This register indicates the status of the integrated encoder power supply. A faulty encoder supply voltage is output as a warning.

Data type	Values
USINT	See the bit structure.

Bit structure:

Bit	Description	Value	Information
0	PowerSupply01	0	24 VDC encoder power supply OK
		1	24 VDC encoder power supply faulty
1 - 7	Reserved	-	

## 5.6 Homing

### 5.6.1 Reference pulse

The following registers must be configured by a single acyclic write with the listed values so that the homing procedure is completed on the edge of the reference pulse.

The homing procedure can take place on:

- Rising edge
- Falling edge (default configuration)

#### 5.6.1.1 Constant register "CfO\_EdgeDetectFalling"

Name:

CfO\_EdgeDetectFalling

Data type	Value	Information
USINT	0x00	Configuration value for rising edge
	0x04	Configuration value for falling edge (bus controller default setting)

#### 5.6.1.2 Constant register "CfO\_EdgeDetectRising"

Name:

CfO\_EdgeDetectRising

Data type	Value	Information
USINT	0x04	Configuration value for rising edge
	0x00	Configuration value for falling edge (bus controller default setting)

### 5.6.1.3 Constant register "ConfigOutput24"

Name:

ConfigOutput24

This register contains the value for ABR encoder 1.

Data type	Value	Information
UINT	0x1012	Configuration value for rising edge
	0x1002	Configuration value for falling edge (bus controller default setting)

### 5.6.2 Setting the home position

Name:

CfO\_PresetABR01\_1 to CfO\_PresetABR01\_2 (function models 0 and 2)

CfO\_PresetABR01\_1\_32Bit to CfO\_PresetABR01\_2\_32Bit (function model 1)

#### Function model 0 - Standard and function model 1 - Standard with 32-bit encoder counter value

It is possible to specify 2 home positions with these registers through a one-off acyclic write, for example. The configured values are applied to the counter values after a completed homing procedure.

Data type	Values	Information
INT	-32768 to 32767	Bus controller default setting: 0
DINT <sup>1)</sup>	-2,147,483,648 to 2,147,483,647	

1) In function model 1 only

#### Function model 2 - MotionConfiguration

These two registers are set to 0 by default in function model MotionConfiguration and cannot be configured.

### 5.6.3 Homing with reference enable input

#### 5.6.3.1 Voltage level for reference enable activation

Name:

ConfigOutput26

This register is used to configure the active voltage level of the digital input for the reference enable.

Data type	Value	Information
USINT	0x00	Reference enable is active at 0 VDC (bus controller default setting).
	0x08	Reference enable is active at 24 VDC

#### 5.6.3.2 Reference enable of the input

Name:

ConfigOutput27

This register can be used to define whether the reference enable is activated.

Data type	Value	Information
USINT	0x00	Reference enable input disabled (bus controller default setting)
	0x08	Reference enable input activated

## Register description

### 5.6.4 Reading the referencing mode

Name:

ReferenceModeEncoder01

This register determines the referencing mode.

Data type	Value
USINT	See bit structure.

Bit structure:

Bit	Name	Value	Information
0 - 1		00	Homing disabled
		01	Single shot referencing
		11	Continuous referencing
2 - 5		0	Bits permanently set = 0
6 - 7		00	Homing disabled
		11	Bits permanently set = 1

This results in the following values:

Binary	Hex	Function
--------	-----	----------

00000000	0x00	Homing disabled
----------	------	-----------------

11000001	0xC1	Single shot referencing
----------	------	-------------------------

For a new start after the completed homing procedure:

- Write value 0x00
- Wait until bits 0 to 3 of register StatusInput01 apply value 0. Counter bits 4 to 7 are not deleted.
- Switch homing procedure on again

11000011	0xC3	Continuous homing
----------	------	-------------------

Homing takes place automatically with each reference pulse.

It is important to note how the optional reference enable is configured (see ["Reference enable input" on page 9](#)).

### 5.6.5 Status of the homing procedure

Name:

StatusInput01

This register contains information about the homing procedure.

Data type	Value
USINT	See bit structure.

Bit structure:

Bit	Name	Value	Information
0 - 1	Reserved	0	
2	Homing <sup>1)</sup>	0	Homing not yet occurred
		1	At least one homing procedure occurred
3	State change	0 or 1	Changes with each successful homing procedure
4	Reference pulse <sup>1)</sup>	1	
5 - 7	Counters	x	Continuous counter, incremented with each reference pulse

1) Always 1 after the first reference pulse that occurred

Examples of possible values:

Binary	Hex	Function
--------	-----	----------

0x00000000	0x00	Referencing disabled or homing procedure already active
------------	------	---

0x00111100	0x3CE	First homing procedure complete. The reference value was applied to register Encoder01.
------------	-------	---

0xxxx11100	0xxB	Bits 5 to 7 are subsequently modified with each reference pulse.
------------	------	--

0xxxx1x100	0xxx	Continuously changing the bits with setting "Continuous referencing". The reference value is applied to register Encoder01 with each reference pulse.
------------	------	---

It is important to note how the optional reference enable is configured (see ["Reference enable input" on page 9](#)).



## 5.7 Minimum cycle time

The minimum cycle time specifies how far the bus cycle can be reduced without communication errors occurring. It is important to note that very fast cycles reduce the idle time available for handling monitoring, diagnostics and acyclic commands.

Minimum cycle time
128 $\mu$ s

## 5.8 Maximum cycle time

The maximum cycle time specifies the time up to which the bus cycle can be increased without internal counter overflows causing module malfunctions.

Maximum cycle time
16 ms

## 5.9 Minimum I/O update time

The minimum I/O update time specifies how far the bus cycle can be reduced so that an I/O update is performed in each cycle.

Minimum I/O update time
128 $\mu$ s