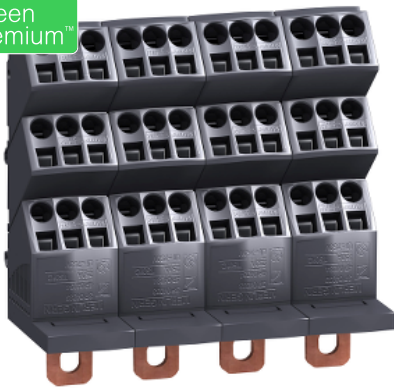


Product data sheet

Specifications



LINERGY DP 4P D.BLK/COMPACT 250A 36HOLES

04034

! To be discontinued on: 31 March 2023

! To be discontinued

Main

Range	Linergy
Range of product	Linergy
Product or component type	Distribution block
Product name	Linergy DP
Range compatibility	Prisma (Prisma G) enclosure Prisma (Prisma P) enclosure Prisma (Prisma PH) enclosure Prisma (Prisma Pack 250) enclosure
Accessory / separate part category	Current distribution accessory
IP degree of protection	IPxx B

Complementary

Mounting support	Prisma mounting plate DIN rail
Installed device	<p>EasyPact: fixed CVS100...160 without earth leakage protection - control: toggle - horizontal installation</p> <p>EasyPact: fixed CVS250 without earth leakage protection - control: toggle - horizontal installation</p> <p>EasyPact: fixed CVS100...160 without earth leakage protection - control: direct front rotary handle - horizontal installation</p> <p>EasyPact: fixed CVS250 without earth leakage protection - control: direct front rotary handle - horizontal installation</p> <p>EasyPact: fixed CVS100...160 with earth leakage protection - control: toggle - horizontal installation</p> <p>EasyPact: fixed CVS250 with earth leakage protection - control: toggle - horizontal installation</p> <p>EasyPact: fixed CVS100...160 with earth leakage protection - control: direct front rotary handle - horizontal installation</p> <p>EasyPact: fixed CVS250 with earth leakage protection - control: direct front rotary handle - horizontal installation</p> <p>EasyPact: fixed CVS100...160 without earth leakage protection - control: toggle - vertical installation</p> <p>EasyPact: fixed CVS250 without earth leakage protection - control: toggle - vertical installation</p> <p>EasyPact: fixed CVS100...160 without earth leakage protection - control: direct front rotary handle - vertical installation</p> <p>EasyPact: fixed CVS250 without earth leakage protection - control: direct front rotary handle - vertical installation</p> <p>EasyPact: fixed CVS100...160 with earth leakage protection - control: toggle - vertical installation</p> <p>EasyPact: fixed CVS250 with earth leakage protection - control: toggle - vertical installation</p> <p>EasyPact: fixed CVS100...160 with earth leakage protection - control: direct front rotary handle - vertical installation</p> <p>EasyPact: fixed CVS250 with earth leakage protection - control: direct front rotary handle - vertical installation</p> <p>ComPact: fixed INS250 - control: direct front rotary handle - horizontal installation</p> <p>ComPact: fixed INS250 - control: direct front rotary handle - vertical installation</p> <p>ComPact: fixed INS250 - control: lateral handle - vertical installation</p> <p>ComPact: fixed INV100 - control: direct front rotary handle - horizontal installation</p> <p>ComPact: fixed INV250 - control: direct front rotary handle - horizontal installation</p> <p>ComPact: fixed INV250 - control: lateral handle - vertical installation</p> <p>ComPact: fixed INV250 - control: direct front rotary handle - vertical installation</p> <p>ComPact: fixed NSX100...250 and ammeter without earth leakage protection - control: toggle - horizontal installation</p> <p>ComPact: fixed NSX100...160 without earth leakage protection - control: toggle - horizontal installation</p>

ComPact: fixed NSX250 without earth leakage protection - control: toggle - horizontal installation
 ComPact: fixed NSX250 with earth leakage protection - control: toggle - horizontal installation
 ComPact: fixed NSX100...160 with earth leakage protection - control: toggle - horizontal installation
 ComPact: fixed NSX100...160 without earth leakage protection - control: direct front rotary handle - horizontal installation
 ComPact: fixed NSX250 without earth leakage protection - control: direct front rotary handle - horizontal installation
 ComPact: fixed NSX100...160 with earth leakage protection - control: direct front rotary handle - horizontal installation
 ComPact: fixed NSX250 with earth leakage protection - control: direct front rotary handle - horizontal installation
 ComPact: fixed NSX100...160 without earth leakage protection - control: motor mechanism - horizontal installation
 ComPact: fixed NSX250 without earth leakage protection - control: motor mechanism - horizontal installation
 ComPact: plug-in NSX100...160 without earth leakage protection - control: toggle - horizontal installation
 ComPact: plug-in NSX250 without earth leakage protection - control: toggle - horizontal installation
 ComPact: fixed NSX100...160 without earth leakage protection - control: toggle - vertical installation
 ComPact: fixed NSX250 without earth leakage protection - control: toggle - vertical installation
 ComPact: fixed NSX100...160 with earth leakage protection - control: toggle - vertical installation
 ComPact: fixed NSX250 with earth leakage protection - control: toggle - vertical installation
 ComPact: fixed NSX100...160 without earth leakage protection - control: direct front rotary handle - vertical installation
 ComPact: fixed NSX250 without earth leakage protection - control: direct front rotary handle - vertical installation
 ComPact: fixed NSX100...160 with earth leakage protection - control: direct front rotary handle - vertical installation
 ComPact: fixed NSX250 with earth leakage protection - control: direct front rotary handle - vertical installation
 ComPact: fixed INV100 - control: direct front rotary handle - vertical installation
 ComPact: fixed INV200 - control: direct front rotary handle - vertical installation
 ComPact: fixed INV160 - control: direct front rotary handle - horizontal installation
 ComPact: fixed INV160 - control: direct front rotary handle - vertical installation
 ComPact: fixed INV200 - control: direct front rotary handle - horizontal installation

Poles description	4P
[Ue] rated operational voltage	690 V AC
[Ui] rated insulation voltage	750 V AC
[Uimp] rated impulse withstand voltage	8 kV
[Ie] rated operational current	250 A at 40 °C
[Icw] rated short-time withstand current	8.5 kA for 1 s
[Ipk] rated peak withstand current	30 kA
I²t on activation	72250000 A ² .s
Connections - terminals	Supply: direct connection 120 mm ² Distribution: spring terminal (per phase) , 6 x 4...10 mm ² (flexible) Distribution: spring terminal (per phase) , 3 x 6...16 mm ² (flexible) Distribution: spring terminal (per phase) , 6 x 4...10 mm ² (rigid) Distribution: spring terminal (per phase) , 3 x 6...16 mm ² (rigid)
Height	140 mm
Width	140 mm
Depth	64 mm
Net weight	0.96 kg
Environment	
Pollution degree	3
Overvoltage category	III
Resistance to incandescent wire	960 °C conforming to IEC 60695-2-11
Standards	IEC 60947-7-1 IEC 61439-1, inside Prisma IEC 61439-2, inside Prisma
Product certifications	ASEFA
Ambient air temperature for operation	-25...55 °C

Packing Units

Unit Type of Package 1	PCE
Number of Units in Package 1	1
Package 1 Height	6.8 cm
Package 1 Width	14.5 cm
Package 1 Length	15.8 cm
Package 1 Weight	950.0 g
Unit Type of Package 2	CAR
Number of Units in Package 2	10
Package 2 Height	15.5 cm
Package 2 Width	29.0 cm
Package 2 Length	34.0 cm
Package 2 Weight	9.55 kg
Unit Type of Package 3	P06
Number of Units in Package 3	200
Package 3 Height	94.0 cm
Package 3 Width	80.0 cm
Package 3 Length	60.0 cm
Package 3 Weight	192.0 kg

Offer Sustainability

Sustainable offer status	Green Premium product
REACH Regulation	REACH Declaration
REACH free of SVHC	Yes
EU RoHS Directive	Compliant EU RoHS Declaration
Toxic heavy metal free	Yes
Mercury free	Yes
RoHS exemption information	Yes
China RoHS Regulation	China RoHS declaration Pro-active China RoHS declaration (out of China RoHS legal scope)
Environmental Disclosure	Product Environmental Profile
WEEE	The product must be disposed on European Union markets following specific waste collection and never end up in rubbish bins
Halogen content performance	Halogen free plastic parts product

Recommended replacement(s)

04034 is replaced by:

1x



LINERGY DP 4P D.BLK/COMPACT 250A 36HOLES
LVS04034