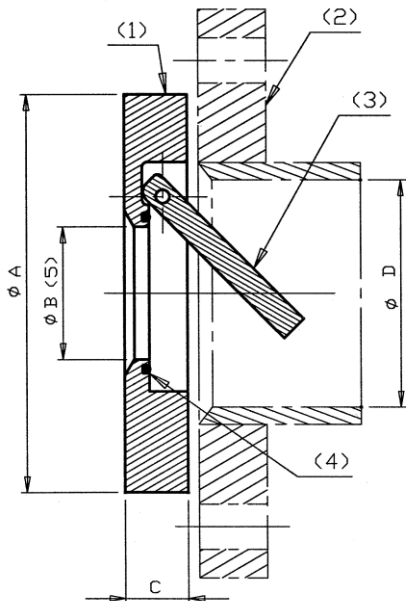
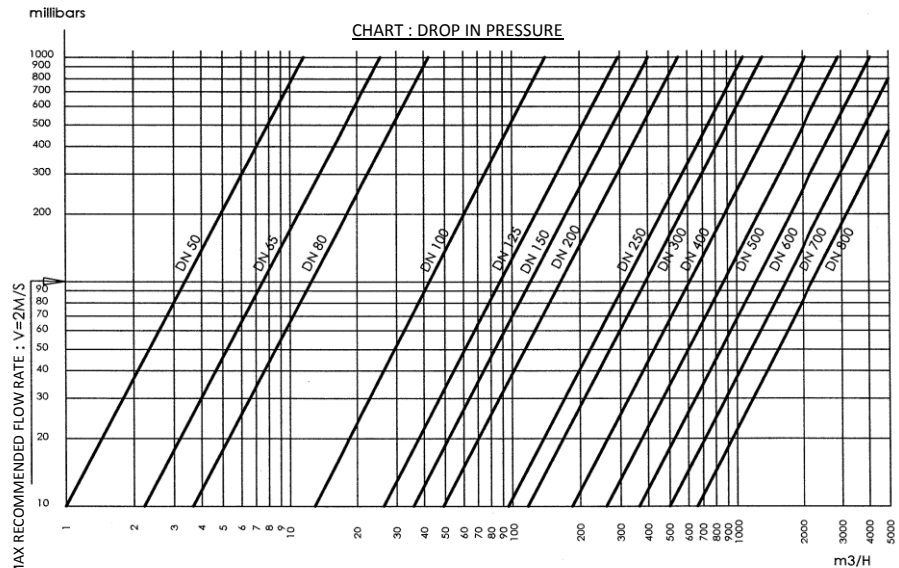


2" to 32" - DN50 TO DN800 SOLID SWING CHECK VALVE IN PPH

CONFORM TO THE DIRECTIVE 97/23/CE FOR GAS GROUP 2 AND GAS GROUP 1 ON REQUEST



(1) Body
(2) Flanged pipe (IE.)
(3) Flap
(4) O'ring



(5) Real bore

DN	A			B	C	D _{mini}	Allowed pressure (BAR)* at		REFERENCES			WEIGHT (KG)
	DIN	ANSI	BS				20°C	80°C	DIN	ANSI	BS	
50	109	101	98	28	23	50	10	5	2054D05RPV/E/D	2054A05RPV/E/D	2054B05RPV/E/D	0,22
65	130	120	109	32	23	65	10	5	2054D06RPV/E/D	2054A06RPV/E/D	2054B06RPV/E/D	0,3
80	144	132	130	40	23	80	10	4	2054D07RPV/E/D	2054A07RPV/E/D	2054B07RPV/E/D	0,36
100	164	170	162	63	23	90	10	4	2054D08RPV/E/D	2054A08RPV/E/D	2054B08RPV/E/D	0,45
125	194	193	192	77	25	114	10	4	2054D09RPV/E/D	2054A09RPV/E/D	2054B09RPV/E/D	0,66
150	220	220	219	90	25	130	10	3	2054D10RPV/E/D	2054A10RPV/E/D	2054B10RPV/E/D	1,02
200	275	275	276	126	35	184	6	2	2054D11RTV/E/D	2054A11RTV/E/D	2054B11RTV/E/D	1,83
250	330	336	337	140	35	204	5	1	2054D12RTV/E/D	2054A12RTV/E/D	2054B12RTV/E/D	2,43
300	380	406	387	176	40	257	4	1	2054D13RTV/E/D	2054A13RTV/E/D	2054B13RTV/E/D	4,7
350	422	447	445	250	50	368	3	1	2054D14RTV/E/D	2054A14RTV/E/D	2054B14RTV/E/D	6
400	470	511	495	287	50	409	3	1	2054D15RTV/E/D	2054A15RTV/E/D	2054B15RTV/E/D	7,5
450	538	544	-	339	60	443	2	1	2054D16RTV/E/D	2054A16RTV/E/D	2054B16RTV/E/D	-
500	594	603	-	389	70	558	2	1	2054D17RTV/E/D	2054A17RTV/E/D	2054B17RTV/E/D	-
600	677	714	727	445	70	629	2	1	2054D18RTV/E/D	2054A18RTV/E/D	2054B18RTV/E/D	17
700	780	-	-	500	70	650	2	1	2054D19RTV/E/D	2054A19RTV/E/D	2054B19RTV/E/D	-
800	920	-	-	530	80	709	2	1	2054D20RTV/E/D	2054A20RTV/E/D	2054B20RTV/E/D	-

* Safety factor of 2 for 10 years for water (according to DVS 2205).

NOTA: This type of non return valve has to be fitted at more than one meter from a pump (to avoid vibration and early wear).
Minimum pressure to ensure sealing by working: 0,5 bar.

MAIN CHARACTERISTICS

- Good chemical resistance of the solid PP.
- Internal seal made by a FKM type SAFKM5 O'ring (V) or EPDM (E) and FFKM (D) on request.
- Sandwich design for installation between flanges.
- Flap's pin is in PVDF for DN50 to 150, and in TITANIUM from DN200

The dimensional data is given for information only and can be modified without prior notification. Please follow the instructions carefully as SAFI can not be held responsible for goods that have been incorrectly installed and used in accordance with SAFI instruction.

If the above non return valves are to be used in an ambient temperature of less than -5°C with FKM seals, insulation should be provided to avoid any change in the mechanical characteristics.

SAFI has a policy of continuously developing its product range and the above date is subject to change without prior notification.