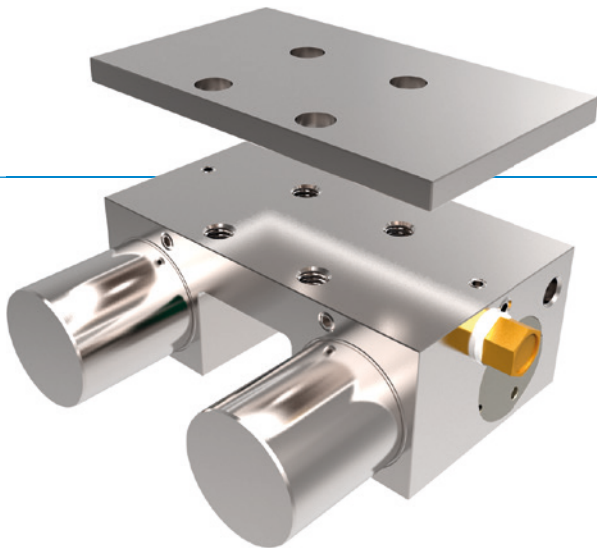


# CLAMPING ELEMENTS | PNEUMATIC SERIES MKS

## ▶ PRODUCT ADVANTAGES



- ▶ **broad range of products**  
For all common profile rail guides
- ▶ **Energize to open (NC)**  
through spring-loaded energy storage
- ▶ **high durability**  
Up to 5 million static clamping cycles
- ▶ **Higher holding force**  
Via activation with PLUS air
- ▶ **Safety element**  
Safe clamping in case of energy failure

## ▶ THE BEST PRODUCT FOR YOUR APPLICATION

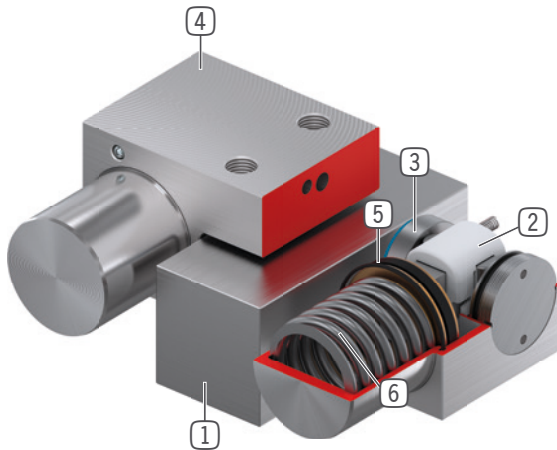
### APPLICATION SCENARIOS

- ▶ **Clamping in case of pressure drop**
- ▶ **Clamping without energy requirement**

### FURTHER INFORMATION

- ▶ **Spacer plate**  
In addition, a spacer plate might have to be ordered as height compensation, depending on the height of the rail carriage (dimension D).
- ▶ **Special variants on request, e.g.**
  - With low opening pressure (3.0 bar)
  - With proximity switch monitoring
  - With additional air connection (from above, from the front)
  - made of stainless steel

## ► BENEFITS IN DETAIL



- ① **Profile rail guide**  
- Available for all common profile rail guides
- ② **Wedge-type gear**  
- Power transmission between piston and clamping jaw
- ③ **Clamping jaw**  
- Pressed at the free surfaces of the profile rail guide
- ④ **Housing**
- ⑤ **Pneumatic piston**  
- The piston moves the wedge-type gear longitudinally
- ⑥ **Spring-loaded energy storage**  
- For non-pressurized closing of the clamping unit

## ► INFORMATION ON THE SERIES

| Series                 | ► Technical data |                  |
|------------------------|------------------|------------------|
|                        | MKS              | MKS-LP           |
| Rail size              | 12-65 mm         | 12-65 mm         |
| Holding force          | 250-3300 N       | 150-1350 N       |
| Pressure min. / max.   | 5.5 / 6.5        | 4 / 6.5          |
| Spring storage         | existing         | existing         |
| PLUS connection        | Yes              | Yes              |
| B10d value             | up to 5 million  | up to 5 million  |
| Dynamic braking cycles | not suitable     | not suitable     |
| Operation              | pneumatic        | pneumatic        |
| Operating temperature  | -10 ... +70 [°C] | -10 ... +70 [°C] |