

# SP-5B10 Power Box Module

## SP5000 SERIES



**Features:**

- Enhanced maintenance process.
- New modular design
- Change screen size with easy "snap on box module"
- Programmable with GP Pro EX v4.0 or greater or with BLUE software\*
- Enhanced Connectivity: 2 Ethernet ports, 2 COM ports, 2 Type A, USB ports, 1 mini USB, AUX Interface

**Performance Specifications**

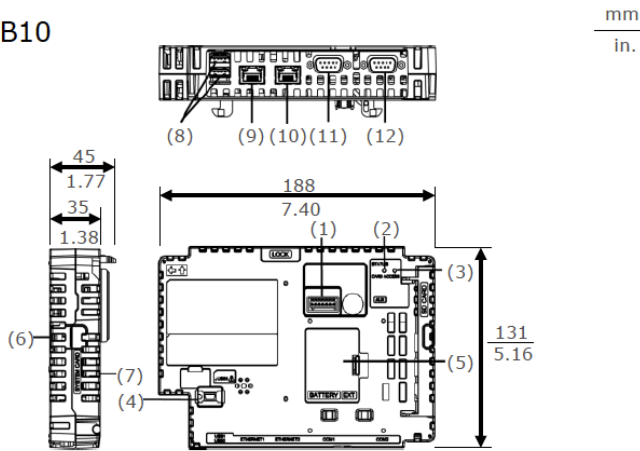
Models	SP-5B10 Power Box		
Part Number	PFXSP5B10	PFXSP5B10F0C	
Operating System	Real Time OS		
Application Memory	SD card		
Backup Memory	NVRAM 512 KB		
Interfaces	Serial	COM1	RS-232C/422/485, Data Length: 7 or 8 bits, Stop Bit: 1 or 2 bits Parity: None, odd, or even, Data Transmission Speed: 2,400/1,200/115,200bps Connector: D-Sub 9 pin (plug)
		COM2	RS-232C/422/485, Data Length: 7 or 8 bits Stop Bit: 1 or 2 bits Parity: None, odd, or even Data Transmission Speed: 2,400(1,200)...115,200 bps, 187,500bps (MPI) Connector: D-Sub 9 pin (plug)
	Ethernet	Standard: IEEE802.3i/IEEE802.3u/IEEE802.3ab, 10BASE-T/100BASE-TX/1000BASE-T Connector: Modular jack (RJ-45) x 2	
	USB	Type A (V2.0) x2, Mini B (V2.0) x1	
	SD Card	SD Card Slot (System) x 1, SD Card Slot (Storage) x 1	
	Audio Output	Speaker Output: 300mW (Rated Load: 8Ω, Frequency : 1kHz) LINE Output: Rated load: 10kΩ or more Connector: 2-piece terminal block (AUX) x 1	
*1: Field bus interface options will be launched around 4Q, 2014. *Blue software to be released in 2015			

**General Specifications**

Models	SP-5B10 Power Box	
Part Numbers	PFXSP5B10	PFXSP5B10F0C
Conformal Coating	-	Yes
Input Voltage	12Vdc (Supply from Display Module)	
Power Consumption	25W (max), 12.5W or less (when power is not supplied to external devices)	
Surrounding Air Temperature	0...60 °C [32...140 °F]	
Storage Temperature	- 20 to +60 °C (- 4 to +140 °F)	
Certifications	UL508, UL/c-UL, CSA C22.2 No142, CE, RoHS, GOST-R, KC	
Ratings	CSA C22.2No213, ANSI/ISA 12.12.01, EN61000-6-4, EN61000-6-2, Class 1 Div 2 Groups A, B, C and D	
Surrounding Air and Storage Humidity	10%...90% RH (Non condensing, wet bulb temperature 39 °C [102.2 °F] or less)	
Dust	0.1 mg/m3 (10-7 oz/ft3) or less (non-conductive levels)	
Pollution Degree	For use in Pollution Degree 2 environment	
Corrosive Gas	Free of corrosive gases	
Atmospheric Pressure (Operating Altitude)	800...1,114 hPa (2,000 m [6,561 ft] or lower)	
Vibration Resistance	IEC/EN 61131-2 compliant	
Shock Resistance	IEC/EN 61131-2 compliant	
Electrostatic Discharge Immunity	Contact Discharge Method: 6 kV (IEC/EN 61000-4-2 Level 3)	
Weight	0.9kg[1.98lb] or less	
External Dimensions	W188xH131xD45m[W7.4 x H5.16 x D1.77 in.]	
Warranty	Two (2) years	

**External Dimensions**

SP-5B10



- (1) Auxiliary Output/Speaker Output Interface (AUX) (2) Status LED (3) Card Access LED (4) USB (mini-B) Interface (5) Expansion Unit Interface Cover (EXT) (6) Storage Card Cover (7) System Card Cover (8) USB (Type A) Interface (9) Ethernet Interface (ETH1) (10) Ethernet Interface (ETH2) (11) Serial Interface (COM1) (12) Serial Interface (COM2)

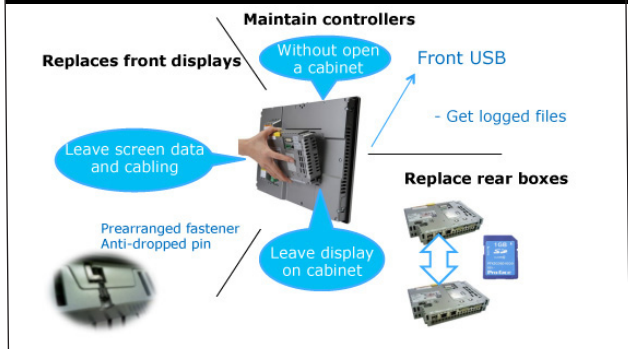
**Ordering Information**

Type	Model Numbers	Description
Power Box	PFXSP5B10	Ethernet I/F x 2, COM I/F x 2, USB A I/F x 2, USB mini-B I/F, SD Card I/F x 2, AUX I/F, Expansion Unit I/F
Power Box with Conformal Coating	PFXSP5B10FOC	Ethernet I/F x 2, COM I/F x 2, USB A I/F x 2, USB mini-B I/F, SD Card I/F x 2, AUX I/F, Expansion Unit I/F with conformal coating.

**Options**

Part Number	Product Name	Description
PFXZCDCNAUX1	AUX Connector	AUX connector required in case an external output is used (5 pcs/set).
PFXZCSD1GC61	SD Memory Card (1 GB)	SD Memory Card (1 GB, SLC, Class 6) for System Card

**Modular Design and Easy Maintenance**



**Model Number Configuration**

Box Module									
<b>PFXSP5 <u>B</u> **</b>	(1) Module Type		(2) Class						
(1) (2)	B	BOX	40	Open					
			10	Power					
<b>×</b>									
Display Module									
<b>PFXSP5 * <u>00</u> * * <u>D</u></b>	(3) Size		(4) Resolution		(5) Touch Panel		(6) Power Supply		
(3) (4) (5) (6)	7	15 inch	T	TFT	P	Premium (Multi)		D	DC
	6	12 inch	W	Wide TFT	A	Advanced (Analog)			
	5	10 inch							
	4	7 inch							

**Pro-face America**  
 Phone: 734.477.0600  
 Fax: 734.864.7347  
 www.profaceamerica.com

**Customer Service Hotline: 800.289.9266**

For more information

**ACCESS** [www.profaceamerica.com](http://www.profaceamerica.com) **Pro-face**



# California Proposition 65 Warning—Lead and Lead Compounds

## Advertencia de la Proposición 65 de California—Plomo y compuestos de plomo

### Avertissement concernant la Proposition 65 de Californie—Plomb et composés de plomb

**⚠ WARNING:** This product can expose you to chemicals including lead and lead compounds, which are known to the State of California to cause cancer and birth defects or other reproductive harm. For more information go to: [www.P65Warnings.ca.gov](http://www.P65Warnings.ca.gov).

**⚠ ADVERTENCIA:** Este producto puede exponerle a químicos incluyendo plomo y compuestos de plomo, que es (son) conocido(s) por el Estado de California como causante(s) de cáncer y defectos de nacimiento u otros daños reproductivos. Para mayor información, visite : [www.P65Warnings.ca.gov](http://www.P65Warnings.ca.gov).

**⚠ AVERTISSEMENT:** Ce produit peut vous exposer à des agents chimiques, y compris plomb et composés de plomb, identifiés par l'État de Californie comme pouvant causer le cancer et des malformations congénitales ou autres troubles de l'appareil reproducteur. Pour de plus amples informations, prière de consulter: [www.P65Warnings.ca.gov](http://www.P65Warnings.ca.gov).

All trademarks are the property of Schneider Electric SE, its subsidiaries, and affiliated companies.

**Schneider Electric USA, Inc.**  
800 Federal Street  
Andover, MA 01810 USA  
888-778-2733  
[www.schneider-electric.us](http://www.schneider-electric.us)

Todas las marcas comerciales son propiedad de Schneider Electric SE, sus filiales y compañías afiliadas.

Importado en México por:  
**Schneider Electric México, S.A. de C.V.**  
Av. Ejercito Nacional No. 904  
Col. Palmas, Polanco 11560 México, D.F.  
55-5804-5000  
[www.schneider-electric.com.mx](http://www.schneider-electric.com.mx)

Toutes les marques commerciales sont la propriété de Schneider Electric SE, ses filiales et compagnies affiliées.

**Schneider Electric Canada, Inc.**  
5985 McLaughlin Road  
Mississauga, ON L5R 1B8 Canada  
800-565-6699  
[www.schneider-electric.ca](http://www.schneider-electric.ca)