

Block cylinders *Application & selection*

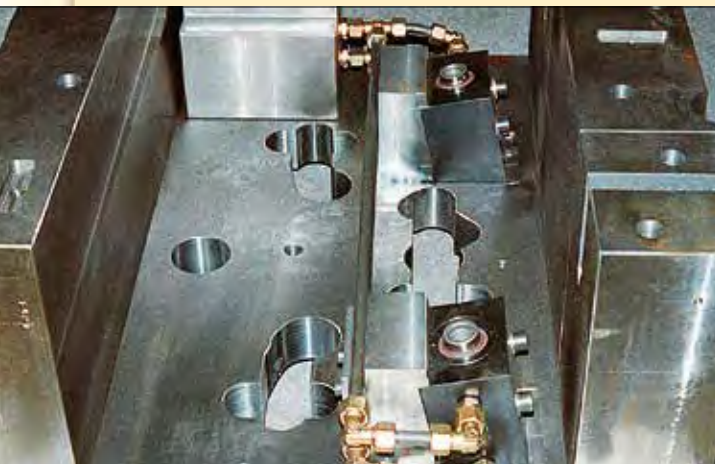
Shown: BD-18202, BMD-70502, BD-40252



BD, BMD, BMS, BS-series

Block cylinders are used for punching, pressing, riveting and bending applications. In general, these cylinders are used for moving, positioning, lifting, opening and closing.

■ The versatile Enerpac block cylinders, fixture mounted for clamping applications.



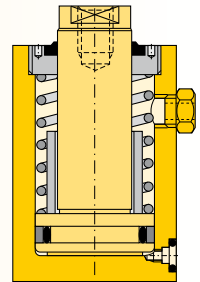
Versatile, all purpose cylinder

- Six clamping capacities enable you to choose the right size for your application
- Variety of strokes, to meet design needs
- Double acting and single acting (spring return), allows selection of cylinder that best conforms to your hydraulic system
- Two oil connection possibilities:
 - with BSPP threaded oil ports
 - with manifold O-ring ports
- Compact cylinder design does not require large amounts of space on your fixture
- Integral wiper ring, keeps contaminants out of cylinder to extend life
- Designed according ISO-standards.

Select your block cylinder type:

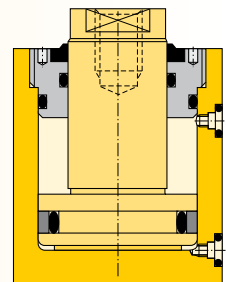
BMS, BS series, single-acting

- BS series with BSPP oil port
- BMS series with manifold O-ring ports
- Internal threaded plunger
- Nickel-plated plunger
- Strong return spring
- Black oxide base
- Filtered vent plug.



BMD, BD series, double-acting

- BD series with BSPP oil port
- BMS series with manifold O-ring ports
- Internal threaded plunger
- Nickel-plated plunger
- Black oxide base.

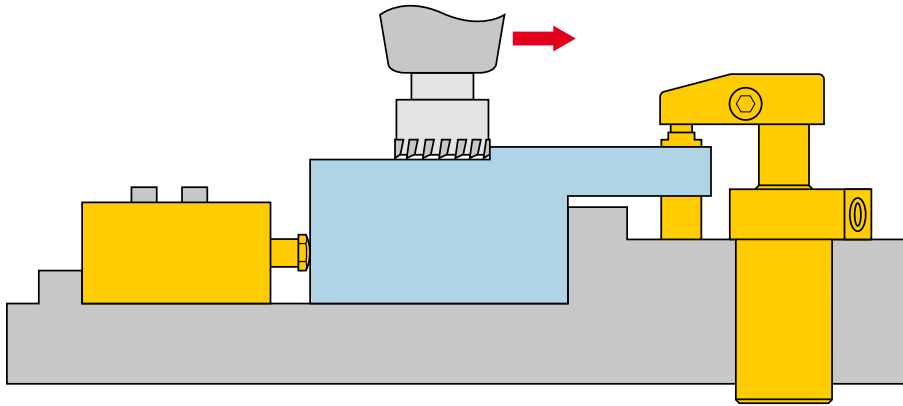


Application example

Block cylinder positions workpiece against fixed point with further clamping coming from an Enerpac swing cylinder.

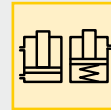
Spherical Contact Bolts

Allow cylinders to act as a datum point in your clamping applications, and protect the piston when cylinders are used for pushing applications.





- Force: 10,9 - 274,8 kN**
- Stroke: 8 - 56 mm**
- Pressure: 40 - 350 bar**


- E** Cilindros tipo bloque
- F** Vérins cube
- D** Blockzylinder





Options


Contact bolts 

 86 ▶


Fittings 

 194 ▶

Valves 

 156 ▶

Product selection

Piston Ø	Rod Ø	Clamping force		Stroke mm	Model Nr. Manifold O-ring oil port	Model Nr. BSPB threaded oil port	Cylinder effective area		Cylinder oil capacity		Minimum spring return force N	 kg
		push kN	pull kN				push cm ²	pull cm ²	push cm ³	pull cm ³		
▼ Single acting												
20	12	10,9	-	8	BMS-1082	BS-1082	3,1	-	2,5	-	93	0,9
20	12	10,9	-	18	BMS-10182	BS-10182	3,1	-	5,7	-	108	1,2
25	16	17,0	-	10	BMS-18102	BS-18102	4,9	-	4,9	-	168	1,3
25	16	17,0	-	25	BMS-18252	BS-18252	4,9	-	12,3	-	157	1,8
40	25	43,6	-	12	BMS-40122	BS-40122	12,6	-	15,1	-	378	2,0
40	25	43,6	-	25	BMS-40252	BS-40252	12,6	-	31,4	-	381	2,7
50	32	68,2	-	12	BMS-70122	BS-70122	19,6	-	23,6	-	471	3,3
50	32	68,2	-	25	BMS-70252	BS-70252	19,6	-	49,1	-	425	4,4
80	50	174,9	-	20	BMS-180202	BS-180202	50,2	-	100,5	-	917	12,0
100	63	273,4	-	25	BMS-280252	BS-280252	78,5	-	196,3	-	1419	19,0
▼ Double acting												
20	12	11,0	7,0	16	BMD-10162	BD-10162	3,1	2,0	5,0	3,2	-	0,9
20	12	11,0	7,0	36	BMD-10362	BD-10362	3,1	2,0	11,3	7,2	-	1,2
25	16	17,2	10,1	20	BMD-18202	BD-18202	4,9	2,9	9,8	5,8	-	1,3
25	16	17,2	10,1	50	BMD-18502	BD-18502	4,9	2,9	24,5	14,8	-	1,8
40	25	44,0	26,8	25	BMD-40252	BD-40252	12,6	6,3	31,4	15,8	-	1,9
40	25	44,0	26,8	50	BMD-40502	BD-40502	12,6	6,3	62,8	31,6	-	2,6
50	32	68,7	40,6	25	BMD-70252	BD-70252	19,6	11,6	49,1	29,0	-	3,2
50	32	68,7	40,6	50	BMD-70502	BD-70502	19,6	11,6	98,2	58,0	-	4,3
80	50	175,8	107,2	25	BMD-180252	BD-180252	50,2	30,6	125,6	76,6	-	9,3
80	50	175,8	107,2	50	BMD-180502	BD-180502	50,2	30,6	251,2	153,1	-	11,5
100	63	274,8	165,7	28	BMD-280282	BD-280282	78,5	47,3	219,8	132,6	-	14,7
100	63	274,8	165,7	56	BMD-280562	BD-280562	78,5	47,3	439,6	265,1	-	18,2

Block cylinders *Dimensions & options*

Shown: BD-18202, BMD-70502, BD-40252



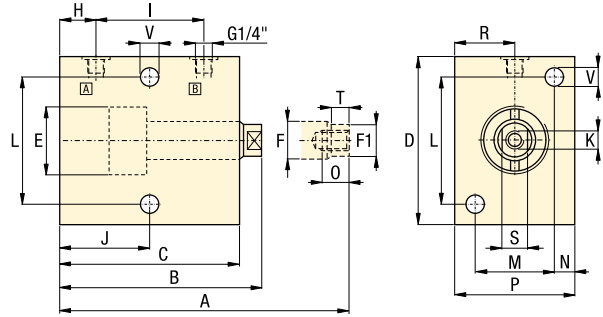
BD, BMD, BMS, BS-series

These compact block cylinders are easily mounted in horizontal or vertical position for a range of special tooling applications.

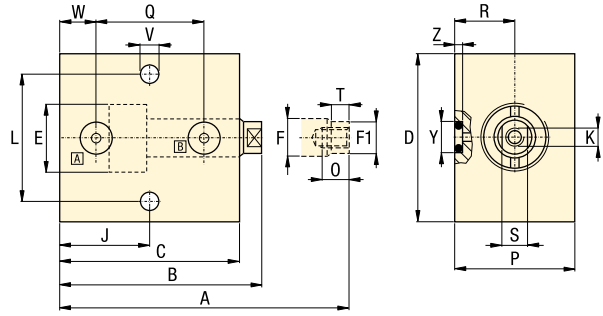
They can be used for positioning, clamping, pushing, pressing or punching operations.

The plunger has an internal thread to accommodate accessories such as contact bolts.

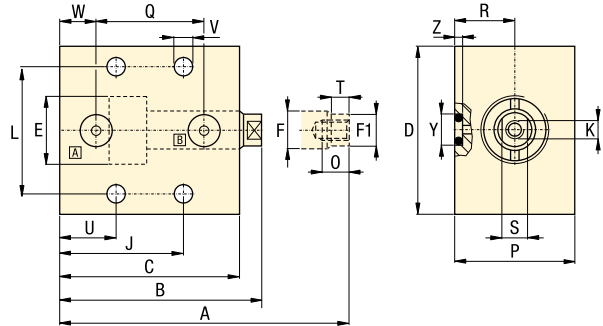
All BS and BD models



- BMS-1082** **BMD-10162**
- BMS-18102** **BMD-18202**
- BMS-40122** **BMD-40252**
- BMS-70122** **BMD-70252**
- BMD-280282**



- BMS-10182** **BMD-10362**
- BMS-18252** **BMD-18502**
- BMS-40252** **BMD-40502**
- BMS-70252** **BMD-70502**
- BMS-180252** **BMD-180502**
- BMS-280252** **BMD-280562**



Dimensions in mm [mm]

Model Nr. Manifold O-ring port	Model Nr. BSPP port	A	B	C	D	E	F	F1	H	I	J
						ø	ø	ø			
▼ Single acting											
BMS-1082	BS-1082	70	62	54,5	60	20	12	11	12,0	25	24,5
BMS-10182	BS-10182	100	82	74,5	60	20	12	11	12,0	45	44,5
BMS-18102	BS-18102	80	70	62,0	65	25	16	15	12,0	30	27,0
BMS-18252	BS-18252	125	100	92,0	65	25	16	15	12,0	60	57,0
BMS-40122	BS-40122	92	80	68,0	80	40	25	24	12,0	35	32,0
BMS-40252	BS-40252	130	105	93,0	80	40	25	24	12,0	60	57,0
BMS-70122	BS-70122	102	90	76,0	100	50	32	31	14,0	40	36,0
BMS-70252	BS-70252	140	115	101,0	100	50	32	31	14,0	65	61,0
BMS-180202	BS-180202	151	131	114,0	140	80	50	49	15,5	70	66,5
BMS-280252	BS-280252	177	152	132,5	170	100	63	62	18,0	80	77,5
▼ Double acting											
BMD-10162	BD-10162	78	62	54,5	60	20	12	11	12,0	25	24,5
BMD-10362	BD-10362	118	82	74,5	60	20	12	11	12,0	45	44,5
BMD-18202	BD-18202	90	70	62,0	65	25	16	15	12,0	30	27,0
BMD-18502	BD-18502	150	100	92,0	65	25	16	15	12,0	60	57,0
BMD-40252	BD-40252	105	80	68,0	80	40	25	24	12,0	35	32,0
BMD-40502	BD-40502	155	105	93,0	80	40	25	24	12,0	60	57,0
BMD-70252	BD-70252	115	90	76,0	100	50	32	31	14,0	40	36,0
BMD-70502	BD-70502	165	115	101,0	100	50	32	31	14,0	65	61,0
BMD-180252	BD-180252	131	106	89,0	140	80	50	49	15,5	45	41,5
BMD-180502	BD-180502	181	131	114,0	140	80	50	49	15,5	70	66,5
BMD-280282	BD-280282	152	124	104,5	170	100	63	62	18,0	52	49,5
BMD-280562	BD-280562	208	152	132,5	170	100	63	62	18,0	80	77,5

■ *Block cylinder used for punching applications.*



