

AC Line Filters

This section contains AC line filter selection tables, specification tables, and dimension drawings. Use the tables below to match an AC line filter to your servo drive.

AC Line Filter Catalog Numbers

Drive Family	Drive Cat. No.	AC Line Filter Cat. No.
Kinetix 6000	2094-AC05-MP5-S	2090-XXLF-X330B
	2094-AC05-M01-S	
	2094-AC09-M02-S	
	2094-AC16-M03-S	2090-XXLF-375
	2094-AC32-M05-S	2090-XXLF-3100
	2094-BC01-MP5-S	2090-XXLF-X330B
	2094-BC01-M01-S	
	2094-BC02-M02-S	
	2094-BC04-M03-S	2090-XXLF-375B
	2094-BC07-M05-S	2090-XXLF-3100
Kinetix 6200/ Kinetix 6500	2094-BC01-MP5-M	2090-XXLF-X330B
	2094-BC01-M01-M	
	2094-BC02-M02-M	
	2094-BC04-M03-M	2090-XXLF-375B
	2094-BC07-M05-M	2090-XXLF-3100
Kinetix 300/ ⁽²⁾ Kinetix 350	2097-V31PR0-xx	2090-XXLF-TC116
	2097-V31PR2-xx	
	2097-V33PR5-xx	2090-UXLF-336

Drive Family	Drive Cat. No.	AC Line Filter Cat. No.
Kinetix 3	2071-AP0...2071-AP4	2090-XXLF-TC116
	2071-AP8 (single-phase)	
	2071-AP8 (three-phase)	2090-XXLF-TC316
	2071-A10...2071-A15	
Kinetix 2000	2093-AC05-Mxx	2090-XXLF-TC116
		2090-XXLF-TC316
Kinetix 7000	2099-BM06-S	2090-XXLF-TC350
	2099-BM07-S	
	2099-BM08-S	2090-XXLF-TC365
	2099-BM09-S	2090-XXLF-TC3100
	2099-BM10-S	2090-XXLF-TC3150
	2099-BM11-S	2090-XXLF-TC3200
8720MC-RPS	2099-BM12-S	2090-XXLF-TC3250
	8720MC-RPS065-Bx	8720MC-RF180
	8720MC-RPS190-Bx	8720MC-EF190-VB ⁽¹⁾

(1) Line filter unit includes magnetic contactor, harmonic filter, and varistor.

(2) For Bulletin 2097 line filters used with the Kinetix 300/350 drive families, refer to Kinetix Servo Drives Technical Data, publication [GMC-TD003](#).

AC Line Filter Catalog Numbers

Drive Family	Drive Cat. No.	AC Line Filter Cat. No.	Motor Cables > 30 m
Ultra3000	2098-DSD-005	2090-UXLF-106	2090-UXLF-110
	2098-DSD-010	2090-UXLF-110	2090-UXLF-110
	2098-DSD-020	2090-UXLF-123	2090-UXLF-123
	2098-DSD-030	2090-UXLF-136	2090-UXLF-132
	2098-DSD-075	2090-UXLF-336	2090-UXLF-HV330
	2098-DSD-150	2090-UXLF-350	2090-UXLF-HV350
	2098-DSD-HV030, 2098-DSD-HV050, 2098-DSD-HV100, 2098-DSD-HV150	2090-UXLF-HV323	2090-UXLF-HV323
	2098-DSD-HV220	2090-UXLF-HV330	2090-UXLF-HV330

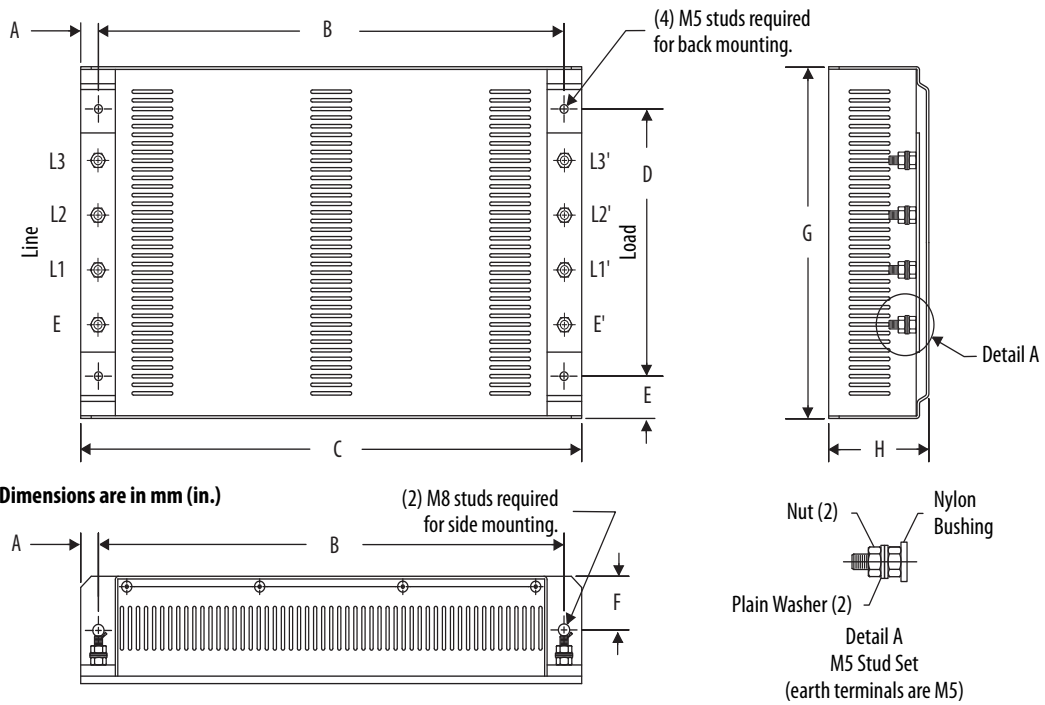
Technical Specifications - AC Line Filters

AC Line Filter Cat. No.	Specifications ⁽¹⁾⁽²⁾							Dimensions
	Voltage	Phase	Current A @ 50 °C (122 °F)	Power Loss W	Leakage Current mA	Weight, approx kg (lb)	Operating Temperature	
2090-UXLF-106	250V AC 50/60 Hz	Single	6	3.5	2.26	0.3 (0.66)	-25...85 °C (-13...185 °F)	page 107
2090-UXLF-110			10	2.7	45	0.95 (2.0)		
2090-UXLF-123			23	10	90	1.6 (3.5)		
2090-UXLF-132			32	20	90	1.75 (3.9)		
2090-UXLF-136			36	–	200			
2090-XXLF-TC116			16	4.9	87	0.80 (1.7)	-25...100 °C (-13...212 °F)	
2090-UXLF-336	520V AC 50/60 Hz	Three	36	–	138	2.7 (5.9)	page 108	
2090-UXLF-350			50	25	138			
2090-UXLF-HV323			23	20	80	1.6 (3.5)		-25...85 °C (-13...185 °F)
2090-UXLF-HV330	30	51	24	1.8 (4.0)	page 109			
2090-XXLF-X330B	30	38	64	2.7 (5.9)	page 110			
2090-UXLF-HV350	50	25	35	4.8 (10.6)				
2090-XXLF-375	75	57	50	5.2 (11.4)				
2090-XXLF-375B	108		108					
2090-XXLF-3100	100	75	73	9.5 (20.9)	-25...100 °C (-13...212 °F)	page 111		
2090-XXLF-TC316	16	7.1	38	0.80 (1.7)				
2090-XXLF-TC350	50	13.8	38	2.4 (5.3)				
2090-XXLF-TC365	65	14.5	38	2.4 (5.3)				
2090-XXLF-TC3100	100	18.1	38	5.2 (11.5)				
2090-XXLF-TC3150	150	8.5	76	7.5 (16.5)				
2090-XXLF-TC3200	200	14.2	76	7.5 (16.5)				
2090-XXLF-TC3250	250	22.1	76	7.5 (16.5)				
8720MC-RF180	500V AC 50/60 Hz	Three	80	25.9	–	5.3 (11.7)	-25...85 °C (-13...185 °F)	page 113
8720MC-EF190-VB			190	–	–	34.0 (74.8)		

(1) For all filters, 90% relative humidity.

(2) For all filters, 10...200 Hz @ 1.8 g vibration.

AC Line Filters Dimensions



Cat. No.	A mm (in.)	B mm (in.)	C mm (in.)	D mm (in.)	E mm (in.)	F mm (in.)	G mm (in.)	H mm (in.)
2090-UXLF-HV330	11.0 (0.4)	338 (13.3)	360 (14.2)	145 (5.7)	29.5 (1.1)	16.0 (0.63)	204 (8.0)	40.0 (1.6)
2090-XXLF-X330B	15.0 (0.6)	330 (13.0)		155 (6.1)	20.0 (0.8)	32.5 (1.3)	195 (7.7)	65.0 (2.5)