

T40-E0101K

T4000 Direct

NON-CONTACT SAFETY SWITCHES

SICK
Sensor Intelligence.



Ordering information

Type	Part no.
T40-E0101K	6035041

The actuator has to be ordered separately. See "Accessories" for further details.

Other models and accessories → www.sick.com/T4000_Direct

actuator not supplied with delivery



Detailed technical data

Features

System part	Sensor
Sensor principle	RFID
Number of safe outputs	2
Safe switch on distance S_{ao}	15 mm ¹⁾ 18 mm ²⁾ 19 mm ³⁾
Safe switch off distance S_{ar}	45 mm ¹⁾ 55 mm ²⁾ 55 mm ³⁾
Active sensor surfaces	1
Actuation directions	5
Monitoring time minimum dwell time	≥ 0.5 s
Coding	Universally coded

¹⁾ With actuator T4000-1KBA.

²⁾ With actuator T4000-1KBQ.

³⁾ With actuator T4000-1KBR.

Safety-related parameters

Category	Category 4 (EN ISO 13849)
Performance level	PL e (EN ISO 13849)
PFH_D (mean probability of a dangerous failure per hour)	2.1×10^{-9}
T_M (mission time)	20 years (EN ISO 13849)
Type	Type 4 (EN ISO 14119)
Actuator coding level	Low coding level (EN ISO 14119)
Classification in compliance with IEC/EN 60947-5-3	PDF-M

Functions

Safe series connection	None, only individual wiring (with diagnostics)
-------------------------------	---

Interfaces

Connection type	Plug connector, M12, 8-pin
Long connecting cable	≤ 200 m
Coupling nut material	Fiber-glass-reinforced polyamide
Error indication	✓
Status display	✓

Electrical data

Protection class	III
Classification according to cULus	Class 2
Note on supply voltage U_S	Operation with UL-class 2 power supply only
External fuse	At supply voltage V_S 0.25 A ... 4 A
Usage category	EN 60947-5-2
Rated operating current (voltage)	0.4 A (24 V DC)
Rated insulation voltage U_i	75 V
Rated impulse withstand voltage U_{imp}	1,500 V AC
Supply voltage V_S	24 V DC (20.4 V DC ... 27.6 V DC)
Power consumption	80 mA
Type of output	Self-monitoring semiconductor outputs (OSSDs)
Response time	≤ 290 ms
Switch-on time	≤ 10 s ¹⁾

¹⁾ After switching on the operating voltage, the semiconductor outputs are switched off during the ready delay and the alarm outputs are at LOW potential.

Mechanical data

Design	Rectangular
Dimensions (W x H x D)	40 mm x 57 mm x 40 mm
Weight	0.4 kg
Housing material	Plastic PTB VO GF30

Ambient data

Enclosure rating	IP67
Ambient operating temperature	-20 °C ... +55 °C
Storage temperature	-20 °C ... +70 °C

Classifications

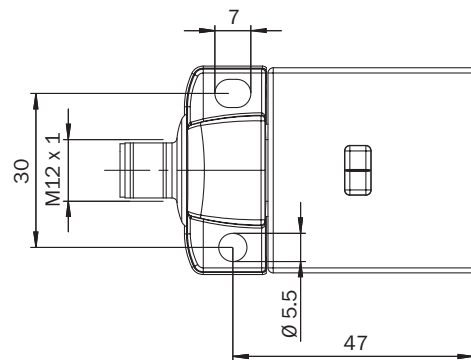
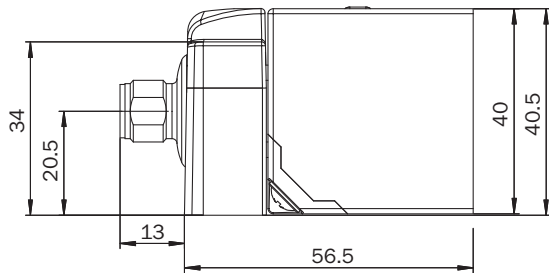
eCl@ss 5.0	27272403
eCl@ss 5.1.4	27272403
eCl@ss 6.0	27272403
eCl@ss 6.2	27272403
eCl@ss 7.0	27272403
eCl@ss 8.0	27272403

T40-E0101K | T4000 Direct

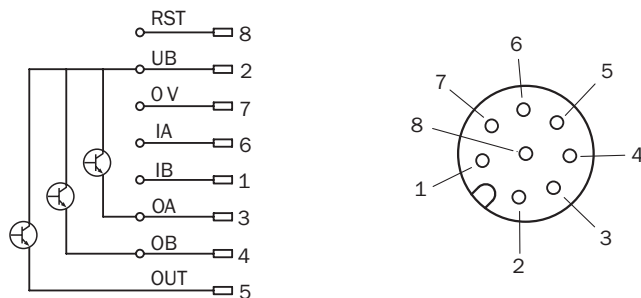
NON-CONTACT SAFETY SWITCHES

eCl@ss 8.1	27272403
eCl@ss 9.0	27272403
eCl@ss 10.0	27272403
eCl@ss 11.0	27272403
eCl@ss 12.0	27274601
ETIM 5.0	EC001829
ETIM 6.0	EC001829
ETIM 7.0	EC001829
ETIM 8.0	EC001829
UNSPSC 16.0901	39122205

Dimensional drawing (Dimensions in mm (inch))



Pin assignment



SICK AT A GLANCE

SICK is one of the leading manufacturers of intelligent sensors and sensor solutions for industrial applications. A unique range of products and services creates the perfect basis for controlling processes securely and efficiently, protecting individuals from accidents and preventing damage to the environment.

We have extensive experience in a wide range of industries and understand their processes and requirements. With intelligent sensors, we can deliver exactly what our customers need. In application centers in Europe, Asia and North America, system solutions are tested and optimized in accordance with customer specifications. All this makes us a reliable supplier and development partner.

Comprehensive services complete our offering: SICK LifeTime Services provide support throughout the machine life cycle and ensure safety and productivity.

For us, that is “Sensor Intelligence.”

WORLDWIDE PRESENCE:

Contacts and other locations –www.sick.com