

Grundfos Pump Repair Kits Price List March 2021 Category 4A



PRODUCTS INCLUDED:

UPE/MAGNA
SOLOLIFT+/SOLOLIFT2
UNILIFT
MQ/JP/SCALA2
CM/CH
CR
TP/NB/NK
SP
MG/MGE



be
think
innovate

GRUNDFOS 

PLEASE NOTE THE FOLLOWING FROM OUR TERMS AND CONDITIONS OF SALE:

A copy of our full terms and conditions are available at the back of this price list & all prices are delivered at place (DAP) and subject to VAT at the standard rate.

MINIMUM ORDER VALUE

Our minimum order value is **£55.00 NET**. Orders between the minimum order value and the low order threshold of **£335.00 NET** for pumps or **£130.00 NET** for Category 4, S1,S2,S3,S4 items will be subject to a **£37.00 NET** handling fee.

EXPRESS DELIVERY OPTIONS;

INTERSPEED (PER ITEM) (above 150 Kgs – subject to transport availability and additional cost)

- CR(I)(E), CRN(E) Vertical Multistage
- Non-stock SP/SPA models (with or without drop cable cut in 5 metre increments. Please note; resin cable joint will take 24 hours to set)
- Order must be received electronically by **10.45am** – despatch same day, **delivery by Express Carrier Service** – UK (*note restrictions apply)
£80.00 NET (PER ITEM)

BOXSPEED (PER ITEM) – (above 100 Kgs – subject to transport availability and additional cost)

- ALPHA, UPS, UPN, UPS3/UPM Circulators
- Magna (D) Glandless Circulators
- UP/UPS/Magna Replacement Heads/Terminal boxes
- TPE(D), NB(E) Glanded
- CM, CME Horizontal Multistage
- JP, MQ and Tanks/Vessels (up to 500 Litre)
- CMB(E), Boosters, Scala
- AP, KP, CC, SL1, SLV, Unilift, Sololift
- SQ, SQE, SB(A), SP2A, 3A & 5A >1.5kW (Excluding pumps with cable fitted as well as SP longer than 2.4 metres)
- Motors, Flanges & Unions, Pump Components, Chamber Stacks
- Order must be received electronically before **13:30pm** – despatch same day, **delivery by Express Carrier Service** – UK (*note restrictions apply)
FIRST ITEM - £60.00 NET & ADDITIONAL ITEMS £25.00 EACH (PER ORDER)

SPARESPEED (PER ITEM)

- Only applies to spares kits, (not chamber stacks, components, pump heads or terminal boxes)
- Order must be received electronically before **13:30pm** – despatch same day, **delivery by Express Carrier Service** – UK (*note restrictions apply)
FIRST ITEM - £50.00 NET & ADDITIONAL ITEMS £25.00 EACH (PER ORDER)

* Express Carrier Service ONLY guaranteed if placed on time via Extranet/EDI. Deliveries to the Highlands, certain mainland post codes and offshore UK may take an extra day. All services are dependent on component and product availability. Grundfos can guarantee despatch or availability for collection same day but cannot guarantee delivery. Grundfos cannot accept any cancellations or amendments once the goods have been despatched. Cancellations are subject to the Product Returns Fee below. **BREXIT - Express delivery cut off times for deliveries into the UK from an EU have changed from 1:30PM to 10:00AM & all deliveries to Northern Ireland will all be despatched from our DC in Sunderland only.**

SPARES STANDARD DELIVERY CHARGE

- A **£30.00 NET** handling fee will be applied, per order, to all orders for spares, pump components, spares kits.
- This charge does NOT apply if **SPARESPEED**, express service or our online ordering system (EDI), and/or Extranet are used for order placement.

PRODUCT RETURNS FEE

• On receipt of written agreement from Grundfos, items can be returned and will be subject to a minimum **35%** restocking fee. Goods must be returned in their original packaging and within **6 months of date of despatch**. All returns will be subject to inspection, to ascertain age, condition and product type and can incur an increased restocking charge. Please contact grundfos-uk@sales.grundfos.com with the original purchase order, to arrange collection. Do not send items to Grundfos as they will be refused delivery, collection will be arranged.

Exclusions to Product Returns apply;

- Items with a NET value of **£150.00** or less (per item).
- All Service kits, cable including attached to pump, assembled/engineered to order product and obsolete/phased out product cannot be returned.

STORAGE CHARGE

• There will be a **2%** storage charge of the item invoice value, payable per month, commencing one month from the date the goods were available for delivery from Grundfos.

WARRANTY PERIOD

• Grundfos pumps are warranted for 24 months from installation or 30 months from manufacture; whichever is the sooner.

• There is a five-year warranty that covers manufacturing or material defects on domestic heating circulators: UPS3 15-50/65, UPS2 15-50/60, ALPHA models, Amazon & Amazon Universal shower pumps. From 1st March 2017 SCALA2 booster pumps when used in domestic applications were included and from 1st February 2020 MAGNA3, TPE, NBE and NKE models were added.

SERVICE AND COMMISSIONING

Grundfos offers a wide range of service, repair and commissioning options. Please contact Service on 01525 850000 or email servicesupportuk@grundfos.com

ORDER TRACKING AND PROOF OF DELIVERY

- Order status and Proof of Delivery can be obtained via Grundfos Extranet or MyGrundfos online portals.
- For extranet access contact grundfos-uk@sales.grundfos.com. Self-registration for MyGrundfos can be found here; <https://uk.grundfos.com/mygrundfos>

INDEX

	Page
UPC / UMC / UPS Series 100 / UPS Series 200 / ALPHA	4
UPS Series 200	5
UPE / MAGNA	6
MAGNA1 / MAGNA3	7
SOLOLIFT+	8
SOLOLIFT2	9
APG, UNILIFT CC / KP / AP	10
MQ, JP, SCALA2	11
CH, CHI, CHIE	12
CM, CME, CM-SP, CMBE, CH and JP BOOSTER	13
CP, CPK	14
CR, CRI, CRN 1, 3, & 5 CR, CRN 2 & 4	15
CR, CRI, CRN 10, 15 & 20 CR, CRN 8 & 16	16
CR, CRN 30 & 60	17
CR, CRN 32, 45, 64, 90,95, 120, 125, 150 & 155	18
CRT	24
CRK, SPK	26
MTH, MTR	27
CLM / CLP / CDM / CDP / NM / NP / LM / LP / LMD / LPD	29
UMT / UPT / UMTD / UPTD	30
TP	31
NB / NK	34
SP	39
SUBMERSIBLE MOTOR CABLES / SQ, SQE	43
BOOSTER SETS	44
MG/MGE motors	45

UMC, UPC, UPS Series 100, ALPHA

UMC/UPC

Pump heads

UMC/UPC pump heads 1ph and 3ph are obsolete
Please contact grundfos-uk@sales.grundfos.com for alternative pump

		240V 1ph 50Hz			415V 3ph 50Hz	
		Capacitor	£	Product Code	£	Product Code
Terminal boxes	UPC 40-60	6 µF	410	96405853	400	96404870
	UPC 40-120	10 µF	410	96405855	400	96404870
	UMC 50-60	14 µF	410	96405857	400	96404870
	UPC 50-120	20 µF	410	96405859	400	96404870
	UMC 65-60	20 µF	410	96405859	400	96404870
	UPC 65-120	25 µF	410	96405860	400	96404870
	UMC 80-60				400	96404870
	UPC 80-120				400	96404870
	UMC 100-60				400	96404870

All above codes are obsolete and only available while stocks last.

UPS - Series 100

		£	Product Code
Pump heads	UPS 40-50		
	UPS 40-80		
UPS 40-50 and UPS 40-80 single phase pump heads are obsolete Please contact grundfos-uk@sales.grundfos.com for alternative pump			
Pump heads*	UP 40-50 F	1,162	52992095
Terminal box*	UP 40-50 F	17	98730796

* Product obsolete. Once stock is depleted, please contact grundfos-uk@sales.grundfos.com

UPS - Series 200

		£	Product Code
Flap valve with guide pin for twin head pumps	UPS 32	50	96407253
	UPS 40	52	96407254
	UPS 50	107	96407255
	UPS 65	55	96407256
	UPS 80	57	96407257
	UPS 100	118	96407258

ACCESSORIES

		£	Product Code	
Tee key	4mm	UPS 15-50 etc	30	00SV0181
	5mm	UPS 32-80; 40-50; 40-80	30	00SV0124
	6mm	UPS 40-60; 40-120	26	00SV0050
	8mm	UPS 50; UPS 65; UPS 80; UPS 100	49	00SV0051
COMFORT UP(S) PM plug		19	98685259	
Alpha Plug (straight)	ALPHA Pro, ALPHA+	27	595562	
	ALPHA2 (L), ALPHA3, MAGNA1, MAGNA3	21	98284561	
Body O'Ring Kit	all large UPS	33	96406940	
Gasket D44/D32x2	UP 15- UP 25 (pack 50)	23	99200010	
Red Spray Paint		33	96485340	
Flow Switch	UPA90	57	595406	
Circulator Washers (520046)	Pack of 50	23	99200010	
Air vent screw 1/4"BSP	Pack of 5	61	96548464	
UPS3 Plug	UPS3	32	99439948	
UPS2 Plug	UPS2	21	98284561	



ALPHA plug

UPS / UPSD - Series 200

UPS Series 200 replacement pump heads

	240V 1ph 50Hz		415V 3ph 50Hz	
	£	Product Code	£	Product Code
UPS 32-30/4	814	96405977	814	96405979
UPS 32-60/2	814	96405980	814	96405984
UPS 32-120/2	814	96405985	814	96405987
UPS 40-30/4	814	96405988	814	96405990
UPS 40-60/2	814	96405994	814	96405996
UPS 40-60/4	948	96405991	948	96405993
UPS 40-120/2	814	96405997	814	96405999
UPS 40-180/2	948	96406000	948	96406001
UPS 40-185/2	948	96432239	948	96432238
UPS 50-30/4	814	96406002	814	96406004
UPS 50-60/2	814	96406009	814	96406013
UPS 50-60/4	948	96406005	948	96406008
UPS 50-120/2	948	96406015	948	96406017
UPS 50-180/2	948	96406018	948	96406019
UPS 65-30/4	814	96406020	814	96406022
UPS 65-60/2	814	96406026	814	96406028
UPS 65-60/4	948	96406023	948	96406025
UPS 65-120/2	948	96406029	948	96406031
UPS 65-180/2			948	96406032
UPS 80-30/4			948	96406034
UPS 80-60/4			948	96406036
UPS 80-120/2			948	96406038
UPS 100-30/4			948	96406040

* UPS circulator pumps with metal ID plate obsolete - no spares

* Pump with FO6 on name plate obsolete - no spares

UPS Series 200 replacement terminal boxes

	240V 1ph 50Hz			415V 3ph 50Hz	
	Capacitor	£	Product Code	£	Product Code
UPS 32-30/4	4 µF	410	96405852	400	96404870
UPS 32-60/2	6 µF	410	96405853	400	96404870
UPS 32-120/2	10 µF	410	96405855	400	96404870
UPS 40-30/4	6 µF	410	96405853	400	96404870
UPS 40-60/2	8 µF	410	96405854	400	96404870
UPS 40-60/4	10 µF	410	96405855	400	96404870
UPS 40-120/2	12 µF	410	96405856	400	96404870
UPS 40-180/2	25 µF	410	96405860	400	96404870
UPS 40-185/2	25 µF	410	96405860	400	96404870
UPS 50-30/4	6 µF	410	96405853	400	96404870
UPS 50-60/2	10 µF	410	96405855	400	96404870
UPS 50-60/4	20 µF	410	96405859	400	96404870
UPS 50-120/2	25 µF	410	96405860	400	96404870
UPS 50-180/2	30 µF	410	96405861	400	96404870
UPS 65-30/4	8 µF	410	96405854	400	96404870
UPS 65-60/2	16 µF	410	96405858	400	96404870
UPS 65-60/4	20 µF	410	96405859	400	96404870
UPS 65-120/2	30 µF	410	96405861	400	96404870



UPSD 50-120 F

UPE(D), MAGNA UPE(D)

UPE UPED Replacement 3 phase heads and terminal boxes

Pump head
Terminal box

Pump heads and terminal boxes are obsolete
Please contact grundfos-uk@sales.grundfos.com for alternative pump

UPE(D) - SINGLE PHASE TERMINAL BOXES (model E)*

	£	Product Code
UPE 32-120 (F)(N)	1,558	96513647
UPE(D) 40-100 (F)	956	97752743
UPE(D) 40-120 (F)(N)	1,558	96513647
UPE(D) 50-60 (F)(N)	1,558	96513647
UPE 50-100 (F)	956	97752743
UPE(D) 50-120 (F)(N)	2,535	96500020
UPE(D) 65-60 (F)(N)	1,558	96513647
UPE(D) 65-120(F)(N)	2,535	96500020
UPE(D) 80-120 FZ	POA	97529279
MAGNA 25/32/40/50-40/60/80/100	956	97752743

* Product obsolete. Once stock is depleted, please contact grundfos-uk@sales.grundfos.com

UPE(D) - SINGLE PHASE PUMP HEADS (model E)*

	£	Product Code
UPE 32-120 (F)(FN)	POA	96513648
UPE 40-100(F)(F(D))	POA	96281051
UPE 40-120(F)(FN)(F(D))	POA	96513649
UPE 50-60(F)(FN)(F(D))	POA	96513660
UPE 50-100(F)	POA	96281052
UPE 50-120(F)(F(D))(FN)	POA	96499918
UPE 65-60(F)(FN)(F(D))	POA	96513661
UPE 65-120(F)(FN)(D)	POA	96499919
UPE25-60	POA	96281047
UPE25-100	POA	96281049

* Product obsolete. Once stock is depleted, please contact grundfos-uk@sales.grundfos.com

UPE (D)

	£	Product Code
Geni Module *	200	605945
LON Module	OBSOLETE	98179044

* Product obsolete. Only available while stocks last.



UPE GENI module

MAGNA (D)

	£	Product Code
Geni Module * Magna 4/6/8/10 m	OBSOLETE	96236335

* Product obsolete. Once stock is depleted, please contact grundfos-uk@sales.grundfos.com



Magna add-on module



Magna terminal box

Please advise pump PN and contact Grundfos direct to ensure correct generation of spare quoted
Above items are under our phase out program - please call to check stock once stock sold parts are obsolete

MAGNA1, MAGNA1 D, MAGNA3, MAGNA3 D

MAGNA1, MAGNA1 D

	£	Product Code
ALPHA plug (Straight)	21	98284561
Kit, O-ring D68x4.35	64	98357755
Control box cover	106	98988010
Insulation shell DN25/D32 180	45	98615808
Insulation shell DN32-100 F 220	58	98615809
Insulation shell DN40-60 F 220	60	98615810

HEADS AND TERMINAL BOXES

PLEASE CONTACT GRUNDFOS WITH PUMPS QUOTING PN NUMBER FROM YOUR NAMEPLATE

MAGNA3, MAGNA3 D

	£	Product Code
ALPHA plug (Straight)	21	98284561
Kit, Sensor DPS	96	99313067
Kit, sensor cable	468	99313072
Control box cover front end	118	98148727
Connector plugs for Magna 1 & 3	103	98357861

HEADS AND TERMINAL BOXES

PLEASE CONTACT GRUNDFOS WITH PUMPS QUOTING PN NUMBER FROM YOUR NAMEPLATE

The pump nameplate provides the following information:

The nameplate contains the following information:

- 1-5: Serial number (S/N) fields
- 6: IP rating (IP XXX)
- 7: Total flow (TF XXX)
- 8: Efficiency (EEI ≤ X.XX)
- 9: Part number (Part X)
- 10: Country of origin (Made in Germany)
- 11: Minimum current (Min. X.XX A)
- 12: Maximum current (Max. X.XX A)
- 13: Minimum power (Min. XXXX W)
- 14: Maximum power (Max. XXXX W)
- 15: Maximum pressure (Max. X.X MPa)
- 16: QR code
- 17: QR code
- 18: CE, VDE, and PCB symbols



Part 164

SOLOLIFT+

SOLOLIFT+ WC, WC-1 & WC-3

	£	Product Code
Hoses	POA	96553016
Microswitch	138	96575698
Top cover	Sololift+ WC-1; WC-3 226	96553041
	Sololift+ WC 218	96553040
Wear parts	84	96553045
Spare box	OBSOLETE	96553054

SOLOLIFT+ CWC-3

	£	Product Code
Hoses	220	96553017
Microswitch	138	96575699
Top cover	213	96553042
Wear parts	97	96553046
Spare box	OBSOLETE	96553056

SOLOLIFT+ C-3

	£	Product Code
Hoses	220	96553017
Microswitch	138	96575710
Top cover	213	96553042
Wear parts	97	96553046
Spare box	OBSOLETE	96553057

SOLOLIFT+ D-3

	£	Product Code
Hoses	427	96553018
Microswitch	138	96575711
Top cover	OBSOLETE	96553043
Wear parts	OBSOLETE	96553047



SOLOLIFT+ range

SOLOLIFT2

SOLOLIFT2 WC-1 & WC-3

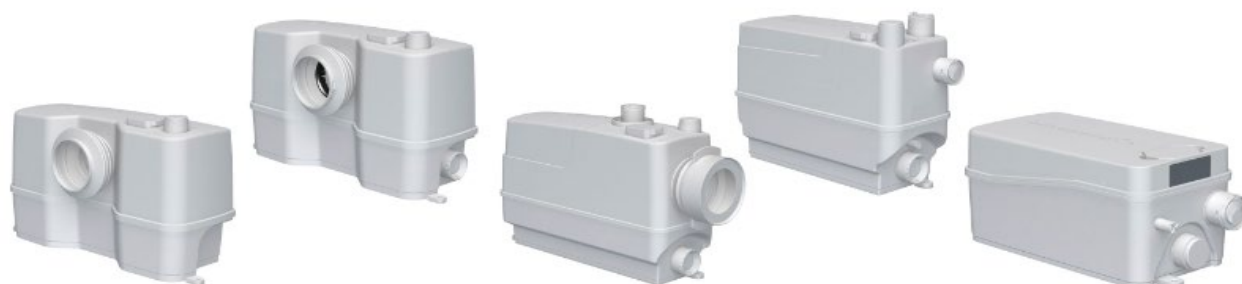
	£	Product Code	
Discharge connector	40	98103367	
Pressure switch	94	97775344	
Capacitor	33	97775374	
Carbon Filter, bulk	pack 5	26	97775370
Gasket for toilet connection (pan connector)	65	97775368	
Non-return valve for outlet	22	97775371	
Impeller	35	97775350	
Inlet adapter	36	97775378	
Blanking plug	(item C in instruction book)	33	97775304
WC-1 accessory kit	(supplied with unit)	126	98163942
WC-3 accessory kit	(supplied with unit)	95	97940294

SOLOLIFT2 CWC-3

	£	Product Code	
Pressure switch	94	97775344	
Capacitor	33	97775374	
Carbon Filter, bulk	pack 5	26	97775370
Gasket for toilet connection (pan connector)	63	97775369	
Non-return valve for outlet	22	97775371	
Impeller	35	97775350	
Inlet adapter	36	97775378	
Blanking cover	(item C in instruction book)	33	97775304
Rubber parts	(item B in instruction book)	53	97775364
CWC -3 accessory kit	(supplied with unit)	99	97767074

SOLOLIFT2 C-3 & D-2

	£	Product Code	
Capacitor	20	97775375	
Carbon Filter, bulk	pack 5	26	97775370
C-3 discharge Connector	23	98103364	
C-3 impeller	32	97775352	
D-2 impeller	29	97775354	
C-3 Float switch kit	88	97775346	
Non Return Valve for outlet	22	97775371	
D-2 pressure switch kit	87	97775347	
C-3 assessor kit	(supplied with unit)	118	98163965
D-2 accessory kit	(supplied with unit)	97	98163966



SOLOLIFT2 range

PUMP REPAIR KITS

UNILIFT CC

		£	Product Code
Impeller kit	Unilift CC5	28	96578967
	Unilift CC7	48	96578968
	Unilift CC9	36	96578969
Float switch	all models	55	96578970
	Unilift CC5	109	96578973
Motor kit	Unilift CC7	134	96578974
	Unilift CC9	176	96578975
	all models	17	98561387
O-ring kit	all models	17	98561387
Strainer	all models	39	96578990
Rubber flap valve	all models	22	97825322
Rubber flap valve	(pack of 10) all models	58	96578978

UNILIFT KP

		£	Product Code
Cable socket spanner		177	10757
Impeller kit	Unilift KP150	57	15778
	Unilift KP250	59	15779
Motor cable with float switch 10m	Unilift KP150, KP250 & KP350	158	16723
Motor cable with float switch 5m	Unilift KP150, KP250 & KP350	128	16724
Motor Cable without float switch 5m	Unilift KP150, KP250 & KP350	108	16725
Motor Cable without float switch 10m	Unilift KP150, KP250 & KP350	114	16726
Motor Cable with vertical float switch 5m	Unilift KP150 & KP250	226	16739
Non-return valve (single)		22	97825322
Non-return valve (pack of 10)		58	96578978

UNILIFT AP

			£	Product Code
Shaft seal	Unilift AP12, 35 & 50	NBR	212	96427804
	Unilift AP12, 35 & 50	FKM (Viton)	324	96426650
Float Switch 0.7m	Unilift AP12		111	96548101

UNILIFT AP B

			£	Product Code
Shaft seal	Unilift AP35B & 50B	NBR (standard)	188	96429307
	Unilift AP35B & 50B	FKM (Viton)	236	96429308
Cable entry repair kit	Automatic		119	96429309
	Manual		119	96429310

APG

50 Hz		MODEL A		MODEL B	
		£	Product Code	£	Product Code
Wear parts kit	APG 50.09 / APG 50.11	311	96003308	530	96007169
	APG 50.09.Ex / APG 50.11.Ex	730	96003696	1,363	96007178
	APG 50.17 / APG 50.18 / APG 50.19	488	96003309	864	96007170
	APG 50.19.3 Ex AND APG 50.31.3 Ex	656	96003310	1,029	96007171
	APG 50.31	662	96003311	664	96007172
	APG 50.48.3.Ex / APG 50.65.3.Ex / APG50.92.3.Ex			1,140	96005498
	APG 50.48.3.Ex / APG 50.65.3.Ex / APG50.92.3.Ex*			1,054	96005499

* Pump with moisture switch



Unilift AP float switch



Unilift CC discharge and non-return valve

MQ, JP, SCALA2

MQ			
		£	Product Code
Shaft seal kit		117	96450696
O-ring kit		130	96526628
Hydraulic kit	50Hz models only	310	96525909
Fittings kit with non-return valve	G 1"	86	96577720
Fittings kit with non-return valve	NPT 1"	72	96634763
Pressure switch	MQ 3-35	101	96526653
Pressure switch	MQ 3-45	125	98652420
End-cover		142	96488398
Clamp		139	96450697
Flow sensor		104	96450698
Terminal box connection		97	96488399
Tank		198	98893507
Internal non-return valve		65	96526663
Electronic parts kit	230V 50Hz	226	96525934
Capacitor	12.5 µF	37	96590742
Drain plug		51	96457923

JP4			
		£	Product Code
Bulk, pipe plug		24	99521030
Kit, hydraulic parts		108	98715217
Kit, lifting handle		28	99521000
Kit, motor cover		38	99521025
Kit, O-rings		15	99577668
Kit, pump housing		167	99521027
Kit, shaft seal		40	99520998
Spare, capacitor		17	99521052
Spare, motor fan cover		16	99577666

JP5			
		£	Product Code
Shaft seal kit	model D	38	96768182
Shaft seal & gasket kit	model C	83	985742
Gasket kit	model B, D, E	41	96768180
Hydraulic parts/ejector	model B, D, E	144	96768184

JP6			
		£	Product Code
Shaft seal kit	model D	38	96768182
Shaft seal & gasket kit	model C	84	985743
Gasket kit	model B, D, E	41	96768180
Hydraulic parts/ejector	model B, D, E	143	96768185

SCALA2			
		£	Product Code
Shaft seal		61	99016024
O-rings		46	99016019
Drain plug, bulk	(10 pc)	55	99016065
O-ring for drain plug, bulk	(10 pc)	15	99016066
Drain plug and non-return valves		28	99016030
Chamber stack		81	99016032
Connection module		70	99016047
Cover for hydraulic		40	99016053
Cover complete		161	99016058
Fitting R1 and union, composite		27	99016013
Fitting NPT1 and union, composite		27	99016015
Pressure tank		102	99016027

CH, CHI, JP**CH(N) 2 & 4**

			£	Product Code
Shaft seal kit		CVBE/V	83	985164
		AQQE/V	166	96586305
		RUUE/V	135	985737
		AUUE/V	138	985848
Wear parts kit	CH 2	2-5 stages	90	435002
		6 stages	184	435039
	CH 4	2-4 stages	82	445004
		5-6 stages	194	445017

CH 8 & 12 - Model A & B

			£	Product Code
Shaft seal kit		CVBE/V	97	004N5012
		CVBE/V with neck rings	129	004N5013
		AQQE/V	163	96586306
		RUUE/V	145	96416348
Wear parts kit		CH 8-20/25/30	287	96604263
		CH 8-40/50/60	520	96604265
		CH 12-10/20/25/30	235	96604268
		CH 12-40/50/60	479	96604270

CHI(E) 2 & 4

			£	Product Code
Wear parts and shaft seal kit		BUBE / EPDM	262	004H5009
		BUBV / FKM	340	004H5010
		BQQE / EPDM	268	004H5007
		BQQV / FKM	228	004H5008

CHI(E) 8, 10 & 12

			£	Product Code
Wear parts and shaft seal kit		BQQE	322	004F5012
		BQQV	255	004F5013

CHI 15 & 20

			£	Product Code
Shaft seal kit		BQQE	272	96649924
		BQQV	273	96649925
Wear parts and shaft seal kit		BQQE	369	96293521
		BQQV	POA	96293537

**CH****CHI**

CM / CME**CM / CME - A version (cast iron and 304 stainless steel wet components)**

			£	Product Code
Gasket & seal kit	CM 1, 3 & 5	AVBE/V	109	96932350
	CM 1, 3 & 5	AQQE/V	145	96932392
Gasket & seal kit	CM 10, 15 & 25	AVBE/V	129	96932393
	CM 10, 15 & 25	AQQE/V	168	96932394

CM / CME - I / G versions (304/316 stainless steel wet components)

			£	Product Code
Gasket & seal kit	CM 1, 3 & 5	AVBE/V	115	96932438
	CM 1, 3 & 5	AQQE/V	153	96932440
	CM 1, 3 & 5	AQQK	684	96932441
Gasket & seal kit	CM 10, 15 & 25	AVBE/V	124	96932443
	CM 10, 15 & 25	AQQE/V	169	96932445
	CM 10, 15 & 25	AQQK	443	96932446

CM / CME - all models

			£	Product Code
Drain/ fill plug kit		EPDM & FKM	82	96932395
		FFKM	78	96932396
Neck ring		CM 1, 3 & 5	85	96932397
		CM 1, 3 & 5 (low temperature)	109	96932447
		CM 10, 15 & 25	70	96932398
		CM 10, 15 & 25 (low temperature)	119	96932448
Motor bearing		MG(E) 71/80	106	96932399
		MG(E) 90	119	96932400
		MG(E) 100	126	96932412
		MG(E) 112	131	96932413
		MG(E) 132	153	96932414
			£	Product Code
Air separator chamber		CM-SP all models	60	98520101
Empty chamber 27mm		CM-SP all models	34	98520102
Empty chamber 18mm		CM-SP all models	32	98520103
Spacing pipe 13mm		CM-SP all models	30	98520104
Spare sleeve kit		CM-SP 1/3/5-3/4	184	98470942
Spare sleeve kit		CM-SP 1/3/5-5/6	230	98470943
Spare sleeve kit		CM-SP 5-7	261	98470949
Valve kit		CM-SP 4 meters	84	98519018
Valve kit		CM-SP 8 meters	87	98519013

CME Booster (CMBE)

			£	Product Code
Manometer		0-16 bar	111	98906914
Non return valve		1"	95	98906916
Non return valve		1" 1/2	113	98906917
Pressure tank		2 liter GT-H tank with Rp thread	147	98906908
Sensor kit		Sensor MBS 1900 0-10 bar	151	98906904

CH/JP BOOSTER SET

			£	Product Code
Kit, Manometer CMB PS/PT + JPB PT			67	98906913
Kit, 5 way fitting and Gasket			97	98777519
Spacer			41	96587201
Vibration damper			5	96588682
Rivet nut			OBSOLETE	00ID6262
Gasket PK4			45	96603455
Washer			16	00ID2292
Kit, Run Capacitor 20µF IPP			93	96898084
Flexible hose 730mm L) CH/24L			OBSOLETE	00ID3269
Spare, Arm. rubber hose for 50L Tank			88	98986867
Spare, Flexible pipe 20L CH Booster			OBSOLETE	98986791

CP			
CP 2			
		£	Product Code
Shaft seal and gasket kit	all models	458	985140
CP 3			
		£	Product Code
Shaft seal and gasket kit	all models	254	96549650
CP 3 (COLD WATER)			
		£	Product Code
Wear parts kit	1-6 stages	OBSOLETE	315413
	8-12 stages	OBSOLETE	315414
All other parts obsolete			
CP 8			
		£	Product Code
Shaft seal and gasket kit	all models	335	96549654
CP 8K (HOT WATER)			
		£	Product Code
Wear parts kit	1-4 stages	OBSOLETE	325252
	5-10 stages	OBSOLETE	325253
	12-20 stages	OBSOLETE	325254



CP pump

CR / CRI / CRN**CR / CRI / CRN 1, 3 & 5**

			£	Product Code
Shaft seal kit	HQQV	12 mm	300	96455087
	HQQE	12 mm	292	96455086
	HUUUV	12 mm	298	96455085
	HUUE	12 mm	291	96455084
	HUBV	12 mm	199	96455083
	HUBE	12 mm	267	96455082
	HQBV	12 mm	198	96455089
	HQBE	12 mm	192	96455088

Gasket kit	FKM (Viton)		144	96455091
	EPDM		87	96455090

Coupling guard	MG 71-80		64	96505130
	MG 90-132		65	96505131

Plug	EPDM / FKM (Viton)		134	96505133
------	--------------------	--	-----	----------

includes air vent, pipe and drain plugs

			£	Product Code
Wear parts kit SiC	CR / CRI / CRN 1 & 3	up to 9 stages	306	96455095
	CR / CRI / CRN 1 & 3	10-19 stages	354	96455092
	CR / CRI / CRN 1 & 3	21-27 stages	493	96455093
	CR / CRI / CRN 1 & 3	30-36 stages	618	96455094

Wear parts kit SiC	CR / CRI / CRN 5	up to 7 stages	289	96455096
	CR / CRI / CRN 5	8-12 stages	350	96455097
	CR / CRI / CRN 5	13-16 stages	477	96455098
	CR / CRI / CRN 5	18-22 stages	587	96455099
	CR / CRI / CRN 5	24-26 stages	529	96455101
	CR / CRI / CRN 5	29-36 stages	738	96455100

all wear parts kit with silicon carbide bearings

CR / CRN 2

		£	Product Code		£	Product Code
Shaft seal and gasket kit	CR 2			CRN 2		
	AUUE/V	240	405009	AUUE/V	228	985205
	BUBE	152	405096	BUBE	152	405096
	BUBV	150	405097	BUBV	150	405097
Wear parts kit	Up to 9 stages	310	405098	Up to 9 stages	286	405130
	10-18 stages	387	405099	11-15 stages	385	405131
	22-26 stages	455	405100	18 stages	439	405158
				22-26 stages	562	405132

all wear parts kits with ceramic bearings

CR / CRN 4

		£	Product Code		£	Product Code
Shaft seal and gasket kit	CR 4			CRN 4		
	AUUE/V	274	985202	AUUE/V	228	985205
	BUBE	152	405096	BUBE	152	405096
Wear parts kit	BUBV	150	405097	BUBV	150	405097
	up to 6 stages	327	415286	up to 6 stages	267	415289
	7-12 stages	346	415287	7-12 stages	328	415290
	14-16 stages	411	415349	14-16 stages	419	415331
	19-22 stages	502	415288	19-22 stages	617	415291

all wear parts kits with ceramic bearings

CR / CRI / CRN 1, 2, 3, 4 & 5

		£	Product Code
Coupling complete	14/12	78	415060
	19/12	78	415061
	24/12	133	415062
	28/12	165	415063
	38/12	236	415065

* Consult Grundfos Product Center for Service Kit Catalogue and Exploded view of the above items

CR / CRI / CRN**CR / CRN 8 & 16**

	£	Product Code	£	Product Code	
	CR 8 & 16		CRN 8 & 16		
Shaft seal and gasket kit	AUUE/V	261	985204	985204	
	BUBE	190	425062	425062	
	BUBV	206	425063	425063	
	CR 8		CRN 8		
Wear parts kit	1-6 stages	387	425066	425069	
	8-12 stages	519	425067	425070	
	14-20 stages	700	425068	425266	
				16-20 stages	776
	CR 16		CRN 16		
Wear parts kit	2 to 6 stages	432	335078	335081	
	7 to 10 stages	596	335079	335082	
	12 to 16 stages	803	335080	335126	
				12 to 16 stages	947
all wear parts kit with silicon carbide bearings					
			£	Product Code	
Coupling complete	14/16		79	339114	
	19/16		79	339119	
	24/16		117	339124	
	28/16		150	339128	
	38/16		182	339138	
	42/16		234	339142	

CR / CRI / CRN 10, 15 & 20

			£	Product Code
Shaft seal kit	HQQV	16 mm	267	96511845
	HQQE	16 mm	255	96511844
	HUUUV	16 mm	260	96511841
	HUUE	16 mm	255	96511840
	HUBV	16 mm	244	96511837
	HUBE	16 mm	246	96511836
	HQBV	16 mm	250	96511849
	HQBE	16 mm	238	96511848
Gasket kit	FKM (Viton)		220	96509610
	EPDM		161	96509609
Coupling guard	MG 71-80		46	96509611
	MG 90-100		46	96509612
	MG 132		48	96509613
	MG 132		50	96509614
Plug for CR	EPDM / FKM (Viton)		166	96511311
Plug for CRI/CRN	EPDM / FKM (Viton)		152	96511312
includes air vent, pipe and drain plugs				
Coupling complete	14/16		91	96511315
	19/16		91	96511317
	24/16		135	96511319
	28/16		108	96511350
	38/16		210	96511351
	42/16		269	96511352

	£	Product Code	£	Product Code		
	CR / CRI / CRN 10		CR / CRI / CRN 15 & 20			
Wear parts kit	up to 8 stages	330	96511889	up to 6 stages	369	96511824
SiC	9-14 stages	466	96511922	7-10 stages	500	96511827
	16-22 stages	602	96511925	12-17 stages	631	96511830
all wear parts kit with silicon carbide bearings						

* Consult Grundfos Product Center for Service Kit Catalogue and Exploded view of the above items

CR / CRN**CR30 & CR60 model A (Cone & Nut version)**

		£	Product Code
Shaft seal and gasket kit	AUUE/V	299	345015

CR30 & CR60 model B

		£	Product Code
Shaft seal and gasket kit	AUUE/V	386	345122
	BBUE	301	345180
	BBUV	340	345181

Coupling complete	24/22	OBSOLETE	345106
	28/22		345107
	38/22		345108
	42/22		345109
	48/22	OBSOLETE	345110

		£	Product Code		£	Product Code	
Wear parts kits		CR 30			CR 60		
		1-5 stages	759	345199	2-6 stages	798	365103
		6-8 stages	1,289	345200	7-8 stages	1,054	365104
		9-11 stages	1,263	345201			
		12-13 stages	1,321	345202			
		14-16 stages	1,407	345203			

CRN30 & CRN60 model B

		£	Product Code
Shaft seal and gasket kit	AUUE/V	359	345111
	BBUE	504	345208
	BBUV	537	345209

		£	Product Code		£	Product Code	
Wear parts kits		CRN 30			CRN 60		
		1-5 stages	926	345189	2-6 stages	1,141	365111
		6-8 stages	1,352	345190	7-8 stages	1,330	365112
		9-11 stages	1,415	345191			
		12-13 stages	1,454	345192			
		14-16 stages	1,511	345193			

**CR 30****ALL ABOVE CODES DISCONTINUED - AVAILABLE WHILE STOCKS LAST**

CR / CRN**CR, CRN 32, 45, 64, 90, 120 & 150**

			£	Product Code	
Shaft seal kit	HQOV	22 mm	361	96525490	
	HQQE	22 mm	354	96525458	
	HUUUV	22 mm	376	96436728	
	HUUE	22 mm	387	96436727	
	HQBV	22 mm	312	96525459	
	HQBE	22 mm	301	96525457	
	HBQV	32 mm	For CR/CRN 120 & 150	1,061	95059801
	HBQE	32 mm	55kW & 75kW	1,061	95059800
Coupling complete	24/22	MG 90	290	96416589	
	28/22	MG 100-112	293	96416590	
	38/22	MG 132	296	96416591	
	42/22	MG 160	299	96416592	
	48/22	MG 180	302	96416593	
	55/22	Siemens 200-225	305	96416594	
	60/32	Siemens 250	791	95059812	
	65/32	Siemens 280	799	95059813	
	42/22 with key and keyway	MG 160	218	98987855	
48/22 with key and keyway	MG 180	302	96416593		
Plug	EPDM / FKM (Viton)		153	96505136	
includes air vent, pipe and drain plugs					
Coupling guards kit	motor frame 90-132		100	96505134	
	motor frame 160-225-280		101	96505135	
Sensor kit (suitable for all CR(I)E with sensor (AN version))	MBS3000	0-4 bar	G 1/2"	280	96428014
	MBS3000	0-6 bar	G 1/2"	280	96428015
	MBS3000	0-10 bar	G 1/2"	280	96428016
	MBS3000	0-16 bar	G 1/2"	280	96428017
	MBS3000	0-25 bar	G 1/2"	280	96428018

CR, CRN 32

		£	Product Code	£	Product Code
		model A		model B*	
Wear parts kit	1-2 stages	180	96416728	127	98497130
	3-7 stages	428	96416729	292	98497451
	8-11 stages	597	96416730	394	98497452
	12-14 stages	708	96416731	479	98497453
Intermediate bearing kit	3-7 stages	OBSOLETE	96416574	N/A	
	8-14 stages	OBSOLETE	96416576	N/A	
Bottom bearing kit		283	96416580	N/A	
Gasket kit	EPDM			130	96416597
	FKM (Viton)			222	96416598

* all wear parts kit with graflon bearings

CR, CRN 45

		£	Product Code	£	Product Code
		model A		model B*	
Wear parts kit	1-2 stages	185	96416732	139	98497473
	3-7 stages	442	96416733	319	98497474
	8-10 stages	579	96416734	399	98497475
	11-13 stages	698	96472046	511	98497476
Intermediate bearing kit	3-7 stages	OBSOLETE	96416577	N/A	
	8-13 stages	OBSOLETE	96416578	N/A	
Bottom bearing kit		283	96416580	N/A	
Gasket kit	EPDM			157	96416599
	FKM (Viton)			257	96416600

* all wear parts kit with graflon bearings

CR / CRN

CR, CRN 64

		£	Product Code	£	Product Code
		model A		model B*	
Wear parts kit	1-2 stages	198	96416735	166	98497494
	3-8 stages	523	96416736	397	98497495
Intermediate bearing kit	3-8 stages	199	96416573	N/A	
Bottom bearing kit		283	96416580	N/A	
Gasket kit	EPDM	N/A		157	96416599
	FKM (Viton)	N/A		257	96416600

* all wear parts kit with graflon bearings

CR, CRN 90

		£	Product Code	£	Product Code
		model A		model B*	
Wear parts kit	1-2 stages	203	96416737	164	98497509
	3-6 stages	444	96416738	329	98497510
Intermediate bearing kit	3-6 stages	N/A		N/A	
Gasket kit	EPDM			182	96416601
	FKM (Viton)			311	96416602

CR, CRN 120 & 150

		£	Product Code	£	Product Code	
Gasket kit	EPDM			248	95059804	
	FKM (Viton)			602	95059805	
		£	Product Code	£	Product Code	
		CR, CRN 120		CR, CRN 150		
Wear parts kit	1 stage	279	95059806	1 stage	270	95059809
	2-4 stages	676	95059807	2-3 stages	574	95059810
	5-7 stages	1,040	95059808	4-6 stages	987	95059811

Replacement for old Exxx shaft seals on CR(N)(E) 32, 45, 64 & 90

HQQx shafts seals have replaced all Exxx seals.

Old type	New type
EUHE EUBE EUUE EQQE	HQQE
EUHV EUBV EUUV EQQV	HQQV
EUUK	HQQK



CR pumps

CR / CRN**CR, CRN 95, 125, 155**

		Motor flange size	£	Product Code
Kit coupling guard		FF265-350	118	99196379
		FF350-400	119	99196380
		FF400-600	121	99196381
		FF500-600	121	99196382

		Motor/pump shaft diameter	£	Product Code
Kit coupling, complete		38/22	279	99190032
		42/22	279	99190035
		48/22	234	99190038
		55/22	234	99190039
		60/22	372	99190040
		65/28	426	99190041
		65/36	POA	99190044

		CR, CRN 95		CR, CRN 125, 155	
n° stages		£	Product Code	£	Product Code
Kit strap	1	66	99190046	68	99190058
	2	68	99190047	69	99190059
	3	70	99190048	71	99190060
	4	71	99190049	74	99190061
	5	73	99190050	76	99190062
	6	75	99190051	78	99190063
	7	77	99190052	80	99190064
	8	79	99190053	82	99190065
	9	POA	99190054	84	99190066
	10	POA	99190055	86	99190067
	11	POA	99190056	POA	99190068
	12	POA	99190057	POA	99190069

		CR, CRN 95 (PN30)		CR, CRN 95 (PN40)	
n° stages		£	Product Code	£	Product Code
Kit staybolt	1	83	99190078	POA	99190086
	2	88	99190079	POA	99190087
	3	93	99190080	132	99190088
	4	97	99190081	148	99190089
	5	102	99190082	163	99190090
	6	107	99190083	178	99190091
	7	112	99190084	194	99190092
	8	116	99190085	209	99190093
	9		N/A	POA	99190094
	10		N/A	POA	99190095
	11		N/A	POA	99190096
	12		N/A	POA	99190097

		CR, CRN 125,155 (PN30)		CR, CRN 125,155 (PN40)	
n° stages		£	Product Code	£	Product Code
Kit staybolt	1	110	99190098	POA	99190105
	2	119	99190099	144	99190106
	3	126	99190100	165	99190107
	4	132	99190101	186	99190108
	5	147	99190102	206	99190109
	6	149	99190103	227	99190110
	7		N/A	248	99190111
	8		N/A	269	99190112
	9		N/A	290	99190113
	10		N/A	311	99190114
	11		N/A	332	99190115
	12		N/A	POA	99190116

CR / CRN

CR, CRN 95, 125, 155

		Shaft diameter	Elastomer	£	Product Code
Kit shaft seal	22mm		HQQE	274	99262346
			HQQV	284	99262347
			HQBE	265	99262348
			HQBV	275	99262349
			HUUE	POA	99416307
			HUUUV	POA	99416308
	28mm		HQQE	594	99262350
			HQQV	813	99262351
			HQBE	634	99262352
			HQBV	852	99262353
			HUUE	POA	99416318
			HUUUV	POA	99416319
	36mm		HQQE	POA	99262354
			HQQV	POA	99262355
			HQBE	POA	99262356
HQBV			POA	99262357	
HUUE			POA	99416328	
HUUUV			POA	99416329	

			Elastomer	£	Product Code
Kit shaft seal, wear parts only	28mm		HQQE	POA	99262358
			HQQV	POA	99262359
			HQBE	POA	99262360
			HQBV	POA	99262361
	36mm		HQQE	POA	99262362
			HQQV	POA	99262363
			HQBE	POA	99262364
			HQBV	POA	99262365

			Elastomer	£	Product Code
Kit plug			EPDM	123	99262366
			FKM	123	99262367
			EPDM with TDH in base	139	99262370
			FKM with TDH in base	143	99262371

		Shaft seal diameter		Elastomer	£	Product Code
Kit o-ring	22mm	CR 95		EPDM	140	99262378
				FKM	225	99262379
		CR 125, 155		EPDM	154	99262380
				FKM	248	99262381
	28mm	CR 95		EPDM	POA	99262384
				FKM	POA	99262385
		CR 125, 155		EPDM	164	99262386
				FKM	416	99262387
	36mm	CR 125, 155		EPDM	POA	99262392
				FKM	POA	99262393

				£	Product Code
Kit bottom flange					99262396

		Shaft diameter	Stages	SiC		WC	
				£	Product Code	£	Product Code
Kit bearing	CR, CRN 95	22mm	1	168	99262442	294	99415811
			2-4	151	99262443	469	99415812
			5-12	242	99262446	478	99415825
	CR, CRN 95-155	28mm	1-4	POA	99262444	390	99415823
			5-12	POA	99262447	688	99415826
			1-4	POA	99262445	POA	99415824
		36mm	5-12	POA	99262448	POA	99415827

CR / CRN
CR, CRN 95, 125, 155

			£	Product Code
Kit Thrust Handling Device	CR 95	SIC/SiC	POA	99262409
		WC/SiC	POA	99445736
	CR 125	SIC/SiC	POA	99262410
		WC/SiC	2,184	99445737
	CR 155	SIC/SiC	POA	99262411
		WC/SiC	2,505	99445738

		Elastomer	£	Product Code
Kit o-ring for THD	CR 95	EPDM	POA	99262397
		FKM	POA	99262398
	CR 125	EPDM	142	99262399
		FKM	211	99262400
	CR 155	EPDM	143	99262401
		FKM	211	99262402

	Stages		Shaft diameter	£	Product Code
Kit wear parts	1-4	CR, CRN 95	22mm	219	99262415
			28mm	POA	99262416
		CR, CRN 125	28mm	287	99262417
			36mm	POA	99262418
		CR, CRN 155	28mm	360	99262419
			36mm	POA	99262420
	5-8	CR, CRN 95	22mm	376	99262424
			28mm	POA	99262425
		CR, CRN 125	28mm	527	99262426
			36mm	POA	99262427
		CR, CRN 155	28mm	653	99262428
			36mm	POA	99262429
	9-12	CR, CRN 95	22mm	POA	99262433
			28mm	POA	99262434
		CR, CRN 125	28mm	796	99262435
			36mm	POA	99262436
		CR, CRN 155	28mm	1,018	99262437
			36mm	POA	99262438

		Material	Size	£	Product Code
Kit loose flange	CR,CRN 95	Cast iron	DN100 PN16	134	99432754
			DN100 PN25/40	148	99432755
		Stainless steel	DN100 PN16	509	99432731
			DN100 PN25/40	591	99432732
	CR,CRN 125, 155	Cast iron	DN150 PN16	366	99432761
			DN150 PN25/40	358	99432760
		Stainless steel	DN150 PN16	703	99432733
			DN150 PN25/40	898	99432734

			£	Product Code
Spare base	CR 95	Loose flange	POA	99196466
		Loose flange	1,665	99196467
	CRN 95	Collar flange PN16	POA	99196468
		PJE flange	POA	99196469
		Loose flange with THD	POA	99196470
		PJE flange with THD	POA	99196471
	CR 125, 155	Loose flange	POA	99196472
		Loose flange	POA	99196473
	CRN 125, 155	Collar flange PN10	POA	99196474
		PJE flange	POA	99196475
		Loose flange with THD	4,493	99196476
		PJE flange with THD	4,761	99196477

CR / CRN

CR, CRN 95, 125, 155

		Shaft seal		£	Product Code
		thread diameter			
Spare cover	CR 95	M50		1,332	99196493
	CRN 95	M50		1,332	99196494
		M66		POA	99196495
	CR 125, 155	M50		529	99196496
	CRN 125, 155	M50		1,808	99196497
		M66		1,808	99196498

		CR 95 (PN30)		CRN 95 (PN30)	
n° stages	£	Product Code	£	Product Code	
1	312	99196401	341	99196419	
2	376	99196402	427	99196420	
3	455	99196413	531	99196421	
4	528	99196414	622	99196422	
5	658	99196415	768	99196423	
6	740	99196416	872	99196424	
7	850	99196417	993	99196425	
8	936	99196418	1,095	99196426	

		CR, CRN 125, 155 (PN30)	
n° stages	£	Product Code	
1	483	99196439	
2	648	99196440	
3	809	99196441	
4	1,008	99196442	
5	1,187	99196443	
6	1,375	99196444	

		CRN 95 (PN40)		CRN 125, 155 (PN40)	
n° stages	£	Product Code	£	Product Code	
1	POA	99196427	POA	99196445	
2	POA	99196428	751	99196446	
3	676	99196429	937	99196447	
4	789	99196430	1,160	99196448	
5	934	99196431	1,384	99196449	
6	1059	99196432	POA	99196450	
7	1172	99196433	POA	99196451	
8	1296	99196434	POA	99196452	
9	POA	99196435	POA	99196453	
10	POA	99196436	POA	99196454	
11	POA	99196437	POA	99196455	
12	POA	99196438	POA	99196456	

Spare sleeve

CRT

CRT 2 & 4

	shaft \varnothing		£	Product Code
Coupling complete	14/12		78	415060
Coupling complete	19/12		78	415061
Coupling complete	24/12		133	415062
Coupling complete	28/12		165	415063
Coupling complete	38/12		236	415065

CRT 2

	Production date (yr wk)		£	Product Code
Shaft seal kit	before 0336	AUUE	316	405346
Shaft seal kit	before 0336	AUUV	290	405349
Wear parts kits	before 0336	2-10 stages	681	96434799
Wear parts kits	before 0336	11-18 stages	643	96434800
Wear parts kits	before 0336	22-26 stages	781	96434801
Shaft seal kit	after 0335	AUUE	320	96513598
Shaft seal kit	after 0335	AUUV	351	96513599
Wear parts kits	after 0335	2-9 stages	395	96513600
Wear parts kits	after 0335	11-18 stages	524	96513601
Wear parts kits	after 0335	22-26 stages	POA	96513602

CRT 4

	Production date (yr wk)		£	Product Code
Shaft seal kit	before 0336	AUUE	316	405346
Shaft seal kit	before 0336	AUUV	290	405349
Wear parts kits	before 0336	1-6 stages	702	96434802
Wear parts kits	before 0336	7-12 stages	628	96434803
Wear parts kits	before 0336	14-16 stages	729	96434804
Wear parts kits	before 0336	19-22 stages	872	96434805
Shaft seal kit	after 0335	AUUE	320	96513598
Shaft seal kit	after 0335	AUUV	351	96513599
Wear parts kits	after 0335	1-6 stages	402	96513603
Wear parts kits	after 0335	7-12 stages	511	96513604
Wear parts kits	after 0335	14-16 stages	597	96513605
Wear parts kits	after 0335	19-22 stages	698	96513606



CRT

CRT**CRT 8 & 16**

				£	Product Code
Coupling complete	14/16	CRT 8 & 16		79	339114
Coupling complete	19/16	CRT 8 & 16		79	339119
Coupling complete	24/16	CRT 8 & 16		117	339124
Coupling complete	28/16	CRT 8 & 16		150	339128
Coupling complete	38/16	CRT 8 & 16	before 0405	182	339138
Coupling complete	42/16	CRT 8 & 16	before 0405	234	339142
Coupling complete	38/16 short	CRT 8 & 16	after 0404	210	96511351
Coupling complete	38/16	CRT 8 & 16	after 0404	OBSOLETE	96491088
Coupling complete	42/16 short	CRT 8 & 16	after 0404	OBSOLETE	96492113
Coupling complete	42/16	CRT 8 & 16	after 0404	269	96511352
Gasket kit	after 0404	CRT 8 & 16	FFKM	2,418	96545210

CRT 8

				£	Product Code
Shaft seal kit	before 0405	AUUE		416	425303
Shaft seal kit	before 0405	AUUV		386	425304
Wear parts kits	before 0405	1-8 stages		836	96434806
Wear parts kits	before 0405	10-14 stages		928	96434807
Wear parts kits	before 0405	16-20 stages		1,211	96434808
Shaft seal kit	after 0404	AUUE		431	96521638
Shaft seal kit	after 0404	AUUV		470	96521639
Wear parts kits	after 0404	1-6 stages	EPDM	529	96521680
Wear parts kits	after 0404	10-14 stages	EPDM	743	96521681
Wear parts kits	after 0404	17-20 stages	EPDM	969	96521682

CRT 16

				£	Product Code
Shaft seal kit	before 0405	AUUE		416	425303
Shaft seal kit	before 0405	AUUV		386	425304
Shaft seal kit	after 0404	AUUE		431	96521638
Shaft seal kit	after 0404	AUUV		470	96521639
Wear parts kits	before 0405	2-6 stages		1,039	96434809
Wear parts kits	before 0405	7-10 stages		1,070	96434810
Wear parts kits	before 0405	12-16 stages		1,431	96434811
Wear parts kits	after 0404	2-5 stages		532	96521686
Wear parts kits	after 0404	6-10 stages		770	96521687
Wear parts kits	after 0404	12-17 stages		1,030	96521688

**CRT pump**

CRK, SPK**CRK 2 & 4**

				£	Product Code
Shaft seal kit	AUUV			158	415080
	BUBV			145	415085
	AUUK			914	985720
Wear parts kit	CRK 2 model A, B & C	up to 18 stages	FKM	191	98311420
			EPDM	169	98311415
		up to 26 stages	FKM	286	98331664
			EPDM	169	98311415
	CRK 4	up to 12 stages	FKM	254	98311432
			EPDM	224	98311416
		up to 16 stages	FKM	340	98311435
			EPDM	309	98311417
	up to 22 stages	FKM	277	98311436	
		EPDM	247	98311419	
Rectangular flange				42	405178

CRK 8 & 16

				£	Product Code
Shaft seal kit	AUUV			194	425089
Wear parts kit	CRK 8 model B	2-8 chambers	1-8 impellers	300	425090
		10-14 chambers	1-14 impellers	470	425091
		16-20 chambers	1-20 impellers	466	425092
	CRK 16	2-6 chambers	1-6 impellers	262	335091
		7-10 chambers	7-10 impellers	380	335092
		12-16 chambers	12-16 impellers	519	335093

CRK 30 & 60

				£	Product Code
Shaft seal kit				345	345294
Wear parts kit	CRK 30 model A	2-3 chambers	1-3 impellers	OBSOLETE	345290
		4-16 chambers	1 impeller		
		4-11 chamber	2-11 impellers	OBSOLETE	345291
		12-16 chambers	2-6 impellers		
		12-16 chambers	7-10 impellers	OBSOLETE	345292
		12-16 chambers	11-16 impellers	OBSOLETE	345293
	CRK 60	2-3 chambers	1-3 impellers	OBSOLETE	365196
		4-10 chambers	1 impeller		
4-10 chambers		2-8 impellers	OBSOLETE	365197	

SPK 2, 4 & 8

				£	Product Code	
Shaft seal kit	SPK 1, 2 & 4 model C & D	CVBV		83	395008	
		AUUV		145	395091	
Wear parts kit	SPK 1, 2 & 4 model C & D	1-8 stages		264	395090	
		9-23 stages		388	395089	
	SPK 8	1-15 chambers	1 impeller		289	395093
		2-15 chambers	2-3 impellers	incl. SPK 8-5/5	303	395094
		7-15 chambers	5 impellers	excl. SPK 8-5/5	406	395095
			2-3 impellers	with extension pipe		
		7-15 chambers	7-9 impellers	excl. SPK 8-12/9	475	395096
		12-15 chambers	12-15 impellers		611	395097
		12 chambers	9 impellers	incl. SPK 8-12/9	585	395098
15 chambers	5-15 impellers	with extension pipe				
Rectangular flange	SPK 1, 2 & 4 (model C & D)			55	395104	
	SPK 8			42	405178	

MTH, MTR**MTH**

			£	Product Code
Shaft seal kit	MTH 2 & 4	AUUV	93	435045
		AQQV	164	98455535
	MTH 8, 12 & 16	AUUV	87	96431994
Wear parts kit	MTH 2	3-4 chambers	96	435032
		5-11 chambers	158	435033
	MTH 4	2-3 chambers	120	445057
		4-8 chambers	167	445058
	MTH 8, 12		512	96435991
	MTH 16		235	96435992

MTR 1S, 1, 3, 5 & 8

			£	Product Code
Shaft seal kit	HUUE		291	96455084
	HUUV		298	96455085
	HQQE		292	96455086
	HQQV		300	96455087
	HUUK		758	96533324
	HQQK		752	96533326

		EPDM		FKM		
		£	Product Code	£	Product Code	
Wear parts kit	MTR 1S, 1 & 3	2-9 chambers *	158	96530909	158	96530909
		10-19 chambers	244	98311342	274	98311373
		20-27 chambers	320	98311345	291	98311381
		29-36 chambers	399	98311346	444	98311382
		37-42 chambers	428	98311347	433	98311383
	MTR 5	43-49 chambers	462	98311348	467	98311384
		2-7 chambers *	200	96531003	200	96531003
		8-16 chambers	346	98311349	352	98311385
		17-22 chambers	378	98311350	526	98311386
	MTR 8	24-32 chambers	521	98311371	579	98311388
		2-7 chambers *	180	98788385	180	98788385
		8-16 chambers	237	98788386	243	98807648
		17-22 chambers	304	98788387	332	98807649
			24-31 chambers	425	98788388	416

* without o-ring

MTR 10, 15 & 20

			£	Product Code
Shaft seal kit	HUUE		255	96511840
	HUUV		260	96511841
	HQQE		255	96511844
	HQQV		267	96511845
	HUUK		929	96511842
	HQQK		926	96511846
Wear parts kit	MTR 10	2-9 chambers	370	96531041
		10-16 chambers	518	96531042
		18-22 chambers	571	96531043
		23-27 chambers	494	97689849
	28-31 chambers	681	97689850	
	MTR 15 & 20	2-9 chambers	366	96531044
		10-17 chambers	533	96531045
18-21 chambers		588	97689487	

MTR**MTR 32, 45 & 64 - model A**

			£	Product Code	
Shaft seal kit		HUUE	409	96441768	
		HUUV	354	96525458	
		HQQE	361	96525490	
		HQQV	387	96436727	
		HUUK	1,924	96533367	
		HQQK	2,040	96533369	
Wear parts kit	MTR 32	1-4 chambers	1-4 impellers	309	96430767
		5-8 chambers	1-3 impellers	322	96491254
		9-14 chambers	1-3 impellers	309	96491255
		5-8 chambers	5-8 impellers	535	96430768
		9-14 chambers	4-8 impellers	504	96491256
		9-14 chambers	9-12 impellers	756	96430769
	MTR 45	1-4 chambers	1-4 impellers	325	96430773
		5-8 chambers	1-3 impellers	331	96491257
		9-12 chambers	1-3 impellers	308	96491370
		5-8 chambers	4-8 impellers	564	96430775
		9-12 chambers	4-8 impellers	519	96491371
	MTR 64	1-4 chambers	1-4 impellers	322	96430819
		5-8 chambers	1-3 impellers	347	96491372
		9-12 chambers	1-3 impellers	329	96491373
		5-8 chambers	4-5 impellers	488	96430820
9-12 chambers		4-5 impellers	456	96491374	

MTR 32, 45, 64 & 90 - model B

			£	Product Code	
Shaft seal kit		HUUE	409	96441768	
		HUUV	354	96525458	
		HQQE	361	96525490	
		HQQV	387	96436727	
		HUUK	1,924	96533367	
		HQQK	2,040	96533369	
Wear parts kit	MTR 32	1-4 chambers	1-4 impellers	144	98628296
		5-8 chambers	1-3 impellers	155	98628298
		9-12 chambers	1-3 impellers	171	98628337
		5-8 chambers	5-8 impellers	211	98629661
		9-14 chambers	4-8 impellers	229	98629668
		9-14 chambers	9-14 impellers	297	98629669
		15-18 chambers	1-3 impellers	185	98629682
		15-18 chambers	4-8 impellers	243	98629683
		15-18 chambers	9-14 impellers	310	98629684
	MTR 45	1-4 chambers	1-4 impellers	174	98629686
		5-8 chambers	1-3 impellers	180	98629689
		9-12 chambers	1-3 impellers	170	98629690
		5-8 chambers	4-8 impellers	246	98629716
		9-12 chambers	4-8 impellers	244	98629718
		13-17 chambers	1-3 impellers	181	98629719
	MTR 64	13-17 chambers	4-8 impellers	255	98629732
		1-4 chambers	1-4 impellers	176	98629735
		5-8 chambers	1-3 impellers	188	98629736
		9-12 chambers	1-3 impellers	199	98629738
		5-8 chambers	4-5 impellers	191	98629739
9-12 chambers		4-5 impellers	216	98629740	
	13-17 chambers	1-3 impellers	218	98629741	
	13-17 chambers	4-5 impellers	224	98629743	

CLM / CLP / CDM / CDP / NM / NP / LM / LP / LMD / LPD

CLM / CLP / CDM / CDP model A (smooth base)

			£	Product Code
Shaft seal kit	32mm shaft	CLM 100 & CLM 125	680	50608156
		CDM 125 & 150		
Shaft seal kit	45mm shaft	CLP 65 & CLP 80 (11kW and above)	1,773	96479822
		CDP 80 (11kW and above) & CDI		
Shaft seal kit	45mm shaft	CLM 150 & CLM 200	1,154	50608158
		CDM 200 & 210		
Shaft seal kit	45mm shaft	CLP 100	1,894	96479823
		CDP 125		

CLM / CLP / CDM model B (ribbed base)

			£	Product Code
Shaft seal kit	33mm shaft	CLM 100 & CLM 125	662	50810108
		CDM 125 & CDM 150	1,185	96432382
			2,070	96432384
Shaft seal kit	33mm shaft	CLM 150 & CLM 200	981	50810109
		CDM 200 & CDM 210	1,274	96432381
			1,421	96432383

LM / LP (model C & D) / NM / NP

			£	Product Code
Shaft seal and gasket kit	16mm shaft	o'ring type (EPDM)	362	485113
		bellows type (EPDM)	240	485351
		reduced face for glycol mixes / chilled water	301	985845
Shaft seal and gasket kit	22mm shaft	o'ring type (EPDM)	400	485114
		bellows type (EPDM)	429	485278
		reduced face for glycol mixes / chilled water	358	985909
Shaft seal and gasket kit	33mm shaft	bellows type (EPDM)	774	485353
		reduced face for glycol mixes / chilled water	2,168	985624
Wear parts kit	16mm shaft	includes AUUE shaft seal and shaft	362	485125
	22mm shaft	includes AUUE shaft seal and shaft	637	485122
Wear parts kit	16mm shaft	includes BUBE shaft seal and shaft	390	485352
	22mm shaft	includes BBUE shaft seal and shaft	683	485279
Wear parts kit	33mm shaft	includes BUBE shaft seal and shaft	1,337	485354
	33mm shaft	includes BUUE shaft seal and shaft	1,203	485449
Flap valve for twin head pumps		LMD 50	355	485363
		LPD 65, LMD 65	OBSOLETE	485364
		LPD 80, LMD 80	OBSOLETE	485365
		LPD 100, LMD 100, LPD 125	OBSOLETE	485366
Coupling complete		14/16	79	339114
		19/16	79	339119
		24/16	117	339124
		28/16	150	339128
		28/22	262	345107
		38/22	295	345108
	42/22	303	345109	



CDM pump

UMT, UPT

UMT(D) / UPT(D)

		Shaft diameter	Model	£	Product Code	
Shaft seal kit	AUUE	16mm	B, C, D	OBSOLETE	495063	
	BUBE	16mm	B, C, D	OBSOLETE	495078	
	RUUE/V	16mm	B, C, D	187	985844	
	BQQE	16mm	B, C, D	OBSOLETE	96436691	
	CVBE/V	12mm	A, B	123	495067	
	-	16mm	A	OBSOLETE	985271	
Wear parts kits with shaft seal	AUUE	16mm	B, C, D	OBSOLETE	495064	
	BUBE	16mm	B, C, D	OBSOLETE	495079	
	CVBE	UPT 25-50	12mm	A	OBSOLETE	96552581
	CVBE	UPT 25-50	12mm	B	OBSOLETE	96552567
	CVBE	UPT 25-90	12mm	A	OBSOLETE	96552582
	CVBE	UPT 25-90	12mm	B	OBSOLETE	96552568
	CVBE	UPT 32-30; 40-50	12mm	A	OBSOLETE	96552583
	CVBE	UPT 32-90; 40-90	12mm	A	OBSOLETE	96552584
	CVBE	UPTD 25/32/40-50;40-90	12mm	A	OBSOLETE	495068
	CVBE	UPTD 25/32/40-50;40-90	12mm	B	OBSOLETE	495083
				£	Product Code	
Coupling complete		14/16		79	339114	
		19/16		79	339119	
		24/16		117	339124	
		28/16		150	339128	
Flap valve for twin head pumps			OBSOLETE	545196		

Please check Grundfos Product Centre for complete pump service drawings



UMT and UPT range

TP

TP series 100 & 200

			£	Product Code				
Shaft seal kit	12mm shaft	Series 100 model A	TP 25-50/2; -80/2; -90/2	BUBE	144	96409293		
			TP 32-50/2, -80/2, -90/2	BQQE	258	96508806		
			TP 40-50/2, -80/2, -90/2	GQQE	291	96508807		
	12mm shaft	Series 100 model B	TP 25 all	BUBE	232	98284949		
			TP 32-50/2, -80/2, -90/2	BQQE	205	98284950		
			TP 40-50/2, -80/2, -90/2	GQQE	214	98284961		
	12mm shaft	Series 200	TP 32-60/2	AUUE	140	96409264		
				RUUE/V	224	96432881		
			TP 40-30/x	BQQE	250	96488632		
				BQQV	270	96488634		
			16mm shaft	Series 200	all others	BUBE	217	96409265
						AUUE	274	96409266
RUUE/V	187	985844						
			BQQE	302	98313337			
Wear parts kit	Series 100 model A	TP 25-50/2		350	96408790			
		TP 25-90/2		OBSOLETE	96408791			
		TP 32-50, 40-50 /2		257	96408792			
		TP 32-90, 40-90 /2		OBSOLETE	96408793			
	Series 100 model B	TP 25-50		240	98284938			
		TP 25-80		237	98284939			
		TP 32-50; TP 40-50		218	98284941			
		TP 32-80; TP 40-80		219	98284942			
		TP 25-90, TP 32-90; TP 40-90		253	98284940			
		TP 32-60/2		295	96414029			
	Series 200	TP 40-60/4		244	96436361			
		TP 32-30/4		354	96414027			
		TP 32-40;		264	96414028			
		TP 32 -40, -60/4, -150, -180, -220, -230, -260, -330						
		TP 40 -80/4, -90/4, -160, -180, -190, -230, -270, -330, -390		269	96414031			
		TP 50 -60/4, -80/4, -120, -160, -180, -240						
		TP 65 -120, -160						
		TP 80 -30, -40, -60, -80		298	96409269			
	TP 100 except -160							
	TPE model B	TPE 25-50		208	98284943			
TPE 25-80			195	98284944				
TPE 32-50; TPE 40-50			258	98284945				
TPE 32-80; TPE 40-80			227	98284946				
TPE 25-90, TPE 32-90; TPE 40-90			253	98284940				
Coupling complete		11/12	144	495081				
		14/12	78	415060				
		16/16	79	339114				
		19/16	79	339119				
		24/16	117	339124				
		28/16	150	339128				
Flap valve for twin head pumps	TPD 32		50	96407253				
	TPD 40		52	96407254				
	TPD 50		107	96407255				
	TPD 65		55	96407256				
	TPD 80		57	96407257				
	TPD 100		118	96407258				

For **blanking plates** for twin head pumps, please, consult Cat1 price list.



TP Series 100



TPD Series 200

TP

TP series 300

		£	Product Code
Shaft seal kit	BAQE	150	96488302
	BAQV	177	96548353
	BQQE	164	98434904
	BQQV	200	98434905
	BBQE	147	96551963
	GQQE	221	96488303
	GQQV	290	96504870
	DAQF	1,472	96548355

		£	Product Code
Shaft seal kit	BAQE	198	96537605
	BAQV	274	96548357
	BQQE	239	98434906
	BQQV	316	98434908
	BBQE	211	96551928
	GQQE	339	96537606
	GQQV	570	96537608
	DAQF	1,704	96548359
DQQE	2,789	97769897	

		£	Product Code
Shaft seal kit	BAQE	349	96306475
	BAQV	956	96658801
	BQQE	429	98434943
	BQQV	617	98434944
	BBQE	936	96658804
	GQQE	793	96306477
	GQQV	1,198	96658803
	DAQF	2,033	96658807
DQQE	8,092	97685596	

		Length	£	Product Code
Spacer ring for shaft seal	38mm shaft	15.5mm	115	96591277
	28mm shaft	7.5mm	96	96938597
	38mm shaft	10mm	81	96938599
	48mm shaft	15mm	110	96938602
	55mm shaft	22.5mm	118	96938604
	60mm shaft	17.5mm	155	96938606
	38mm shaft	15.5mm	142	96930797
	38mm shaft	10mm	142	96930797

		£	Product Code
Gasket kit	177.39x3.53	31	97757659
	221.84x3,53	32	97757671
	253.6x3,53	33	97757672
	278.99x3,53	35	97757673
	329.79x3,53	37	97757675
	430.66x3,53	64	97757676

		£	Product Code
Gasket kit	177.39x3.53	325	97790022
	221.84x3,53	855	97790080
	253.6x3,53	872	97790081
	278.99x3,53	667	96887763
	329.79x3,53	1,152	96887764
	430.66x3,53	1,422	96887765

Confirm gasket kit PN for each pump model using the Grundfos Product Center

For **blanking plates** for twin head pumps, please, consult Cat1 price list.



TP Series 300

TP

TP series 300

		motor frame	£	Product Code
Shaft kit	28mm shaft	71	462	96039349
		80	485	96039350
		90	497	96039351
		100-112	515	96039352
		132	591	96039353
		160	663	96039354
		180	736	96039355
		200	780	96039356
Shaft kit	38mm shaft	100-112	792	96039357
		132	441	96039358
		160	764	96039359
		180	817	96039360
		200	878	96039361
		225-250	1,039	96537609
Shaft kit	48mm shaft	180-200	886	96306478
		225	1,433	96306479
Shaft kit	55mm shaft	180-200	950	96306488
		225-250-280-315	1,826	96306480
Wear ring kit	Bronze	TP 150 in pump housing D185/D199x15	194	96810109
		TP 150 in cover D154/D168x15	165	96797628
		TP 200 in pump housing D224/D238x15	241	96810112
		TP 200 in cover D224/D238x15	241	96810112

		£	Product Code	£	Product Code
Flap valve for twin head pumps	TPD, TPED 32, 40, 50	357	96488633	POA	96476895
	TPD, TPED 65				
	TPD, TPED 80				
	TPD, TPED 100, 125	459	96537613		
	TPD, TPED 125, 150				

TPE2, TPE2 D, TPE3, TPE3 D

		£	Product Code
Shaft seal kit	BUBE	211	98660102
	BQQE	363	98660103
	GQQE	336	98660104
	BUBV	146	98660105
	BQQV	262	98660106
	GQQV	462	98660107
Flap valve for twin head pumps	DN 32	129	98660108
	DN 40	134	98660109
	DN 50	137	98660110
	DN 65	144	98660111
	DN 80	151	98660112
Gasket kit	EPDM	86	98660099
	FKM	66	98811502
Air vent screw	all models	44	98164277
Bleed Screw	all models	52	96620482
Clamp	all models	161	98660114
Motor stool	all models	255	98660053
Sensor and cable	TPE3	357	98802463

NB, NK

NK - model A (for PN Kxxxxxxx and Dxxxxxxx)

		£	Product Code	
Shaft seal kit	BAQE	28 mm	133	97904582
		38 mm	198	96537605
		48 mm	268	96591237
		65 mm	533	96591633
	GQQE	28 mm	221	96488303
		38 mm	339	96537606
		48 mm	OBSOLETE	96433691
	BQQE	65 mm	752	96433692
		28 mm	164	98434904
		38 mm	POA	96537607
	BAQV	48 mm	POA	96587317
		65 mm	POA	96422160
		28 mm	92	97904583
	GQQV	38 mm	POA	96549067
		48 mm	570	96587314
		65 mm	POA	96029562
	BQQV	28 mm	POA	96433693
		38 mm	POA	96433694
		48 mm	POA	96433695
	DAQF	65 mm	POA	96433696
28 mm		154	97904586	
38 mm		POA	96549066	
DQQE	48 mm	POA	96549069	
	65 mm	POA	96029558	
	28 mm	POA	96505023	
DQQV	38 mm	POA	96505022	
	48 mm	POA	96504926	
	65 mm	2,530	96504927	
DQQE	28 mm	POA	96433681	
	38 mm	POA	96433682	
	48 mm	POA	96433683	
DQQV	65 mm	POA	96433684	
	28 mm	POA	96433685	
	38 mm	POA	96433686	
	48 mm	POA	96433687	
	65 mm	POA	96433688	



NK pump - model A

NB, NK

NB & NK - model B

		Pump material version: A, B, C, D, E, F, G, H, I, J, K, M, N, P, S, T, U, W		Pump material version: L and R		
		£	Product Code	£	Product Code	
Shaft seal kit	BAQE	28 mm	150	96488302	800	96658825
		38 mm	198	96537605	938	96658836
		48 mm	230	96306472	1,130	96658857
		55 mm	349	96306475	2,711	97769919
		60 mm	484	96658812	4,863	97769920
	GQQE	28 mm	221	96488303		
		38 mm	339	96537606		
		48 mm	584	96306474		
		55 mm	793	96306477		
	BQQE	60 mm	816	96658814		
		28 mm	164	98434904	955	96658826
		38 mm	239	98434906	1,381	96658837
		48 mm	335	98434909	1,867	96658858
		55 mm	429	98434943	1,479	97769927
	BAQV	60 mm	766	98434945	2,959	97769928
		28 mm	177	96548353	944	96658827
		38 mm	274	96548357	972	96658838
		48 mm	777	96658791	1,951	96658860
		55 mm	956	96658801	2,392	97769921
	GQQV	60 mm	975	96658815	4,863	97769922
28 mm		290	96504870			
38 mm		570	96537608			
48 mm		1,019	96658793			
55 mm		1,198	96658803			
BQQV	60 mm	1,439	96658817			
	28 mm	200	98434905	1,184	96658828	
	38 mm	316	98434908	1,268	96658839	
	48 mm	427	98434941	1,886	96658861	
	55 mm	617	98434944	1,479	97769929	
DAQF	60 mm	1,134	98434947	3,183	97769930	
	28 mm	1,472	96548355	4,165	96658831	
	38 mm	1,704	96548359	4,218	96658852	
	48 mm	1,857	96658796	4,423	96658863	
	55 mm	2,033	96658807	6,891	97536552	
DQQE	60 mm	2,078	96658820	8,449	97536595	
	28 mm	2,750	97769895	6,843	97769896	
	38 mm	2,789	97769897	8,036	97769898	
	48 mm	4,553	97685509	8,513	97685510	
	55 mm	8,092	97685596	11,108	97685597	
DQQV	60 mm	9,084	97685598	11,983	97685599	
	28 mm	1,517	97769899	8,034	97769900	
	38 mm	1,962	97769901	11,884	97769902	
	48 mm	2,242	97685511	8,768	97685513	
	55 mm	9,085	97685600	12,977	97685601	
		60 mm	9,834	97685602	12,977	97685603
Spacer ring for shaft seal		Length	£	Product Code	£	Product Code
	38mm shaft	15.5mm	115	96591277	170	96938601
	28mm shaft	7.5mm	96	96938597	166	96938598
	38mm shaft	10mm	81	96938599	175	96938600
	48mm shaft	15mm	110	96938602	181	96938603
	55mm shaft	22.5mm	118	96938604	233	96938605
	60mm shaft	17.5mm	155	96938606	439	96938607
	38mm shaft	15.5mm	142	96930797	238	96930799
	38mm shaft	10mm	142	96930797	238	96930799

NB, NK**NB & NK - model B**

Dimensions	Material	Pump material version:	
		£	Product Code
D63/D77x10	Bronze	84	96810098
D76/D90x10	Bronze	81	96810099
D90/D104x10	Bronze	86	96810100
D100/D114x10	Bronze	87	96810102
D112/D126x10	Bronze	90	96810103
D122/D136x10	Bronze	110	96810104
D130/D144x10	Bronze	120	96810106
D144/D158x15	Bronze	169	96810107
D154/D168x15	Bronze	165	96797628
D174/D188x15	Bronze	199	96810108
D185/D199x15	Bronze	194	96810109
D200/D214x15	Bronze	222	96810110
D210/D224x15	Bronze	239	96810111
D222/D272x15	Brass	602	96939611
D224/D238x15	Bronze	241	96810112
D230/D280x15	Brass	858	96939612
D240/D290x15	Brass	968	96939613
D250/D300x15	Brass	932	96939614
D260/D310x15	Brass	1,354	96939615

Wear ring kit

		Pump material version:	
		£	Product Code
D63x10	DIN 1.4517	240	97939264
D76x10	DIN 1.4517	189	96810134
D90x10	DIN 1.4517	195	96810136
D100x10	DIN 1.4517	201	96810138
D112x10	DIN 1.4517	205	96810142
D122x10	DIN 1.4517	210	96810146
D130x13	DIN 1.4517	235	96810150
D154x15	DIN 1.4517	272	96810152
D144x15	DIN 1.4517	191	96810148
D185x15	DIN 1.4517	296	96810154
D174x10	DIN 1.4517	330	97939254
D200x10	DIN 1.4517	309	97939258
D210x15	DIN 1.4517	382	96887262
D224x15	DIN 1.4517	443	97739717

**NK and NB pumps - model B**

NB, NK

NB & NK - model B

		£	Product Code
Gasket kit	EPDM (E)	177,39x3,53	31 97757659
		221,84x3,53	32 97757671
		253,6x3,53	33 97757672
		278,99x3,53	35 97757673
		329,79x3,53	37 97757675
		430,66x3,53	64 97757676
		456,06x3,53	37 97757677
		548x6	70 97757679
	FFKM (K)	177,39x3,53	608 97904674
		221,84x3,53	2,015 97904691
		253,6x3,53	1,824 97904677
		278,99x3,53	2,275 96887760
		329,79x3,53	2,452 96887761
		430,66x3,53	2,961 96887762
		548x6,00	7,775 97536606
		FKM (V)	177,39x3,53
	221,84x3,53		45 97757698
	253,6x3,53		64 97757699
	278,99x3,53		56 97757703
	329,79x3,53		70 97757705
	430,66x3,53		91 97757707
	456,06x3,53		110 97757708
	548x6		148 97757712
	HNBR (X)	177,39x3,53	170 97904675
		221,84x3,53	168 97904692
		253,6x3,53	168 97904678
		278,99x3,53	94 96887766
		329,79x3,53	1,937 96887767
		430,66x3,53	2,171 96887768
		548x6,00	909 97536609
FXM (F)		177,39x3,53	325 97790022
	221,84x3,53	855 97790080	
	253,6x3,53	872 97790081	
	278,99x3,53	667 96887763	
	329,79x3,53	1,152 96887764	
	430,66x3,53	1,422 96887765	
	456,06x3,53	3,002 97790102	
	548x6,00	2,610 97536608	

NB, NK

NK - model B

		£	Product Code
	H80 D24/L100/D14	981	96579717
	H80 D24/L100/D19	981	96579719
	H80 D24/L100/D24	981	96579720
	H80 D24/L140/D24	1,071	96579721
	H80 D24/L100/D28	981	96579722
	H80 D24/L140/D28	1,071	96579724
	H95 D24/L100/D38	1,170	96579726
	H95 D24/L100/D42	1,170	96579731
	H95 D24/L140/D42	1,277	96579732
	H110 D24/L100/D48	POA	96579733
	H110 D24/L140/D48	POA	96579755
	H125 D24/L100/D55	POA	96579763
	H125 D24/L140/D55	POA	96579766
	H80 D32/L140/D24	POA	96579785
	H80 D32/L140/D28	POA	96579788
	H95 D32/L140/D38	1,283	96579800
	H95 D32/L140/D42	1,279	96579802
	H110 D32/L140/D48	1,468	96579803
	H125 D32/L140/D55	1,633	96579804
	H140 D32/L140/D60	2,044	96579805
	H160 D32/L140/D65	1,534	96579806
	H80 D24/L140/D19	POA	96861578
	H95 D42/L140/D38	1,380	96861607
Spacer coupling complete	H95 D42/L140/D42	1,314	96861609
	H110 D42/L140/D48	1,462	96861611
	H125 D42/L140/D55	1,677	96861613
	H140 D42/L140/D60	2,202	96861615
	H160 D42/L140/D65	2,604	96861617
	H200 D42/L140/D65	3,826	96861618
	H180 D42/L140/D75	3,356	96861623
	H200 D42/L140/D80	3,824	96861626
	H110 D48/L180/D48	1,739	96861631
	H125 D48/L180/D55	1,980	96861632
	H140 D48/L180/D60	2,612	96861633
	H160 D48/L180/D65	3,221	96861634
	H180 D48/L180/D70	3,877	96861636
	H180 D48/L180/D75	3,819	96861638
	H200 D48/L180/D80	4,346	96861640
	H225 D48/L180/D85	5,474	96861641
	H140 D60/L180/D55	2,352	96861646
	H140 D60/L180/D60	2,317	96861647
	H160 D60/L180/D65	2,877	96861648
	H180 D60/L180/D70	3,879	96861650
	H180 D60/L180/D75	3,821	96861651
	H200 D60/L180/D80	4,348	96861653
	H225 D60/L180/D85	5,476	96861654
	H250 D60/L180/D95	7,150	96861657
	B/H80	68	96480015
	B/H95	80	96480016
	B/H110	92	96480017
	B/H125	84	96480018
Coupling rubber parts for Flender spacer coupling	B/H140	120	96480019
	B/H160	147	96480040
	B/H180	193	96796254
	B/H200	209	96796255
	B/H225	239	96796259
	B/H250	288	96796260

SP**SP1A & SP2A - model A**

				£	Product Code
Wear parts kit			6 stages	106	95054
			7-9 stages	111	55008
			10-15 stages	111	55009
			16-21 stages	134	95056
			22-26 stages	134	55010
			27-33 stages	161	55011
Wear parts kit			31-39 stages	179	105059
			40-48 stages	230	95059
			49-60 stages	283	95060
			61-75 stages	301	95061
			76-90 stages	332	95062

SP3A & SP5A - model A

				£	Product Code
Wear parts kit		SP	1-6 stages	106	95054
			7-9 stages	111	55008
			10-15 stages	111	55009
			16-21 stages	134	95056
			22-26 stages	134	55010
			27-33 stages	161	55011
Wear parts kit		SP; SP-N	5 stages	102	105543
			6-10 stages	140	105544
			11-15 stages	165	55504
			16-24 stages	178	105546
			25-30 stages	178	105547
			31-39 stages	179	105059
			40-48 stages	230	95059
			49-60 stages	283	95060
			61-75 stages	301	95061
76-90 stages	332	95062			
Wear parts kit		SP-R	5 stages	96	105969
			6-10 stages	98	105970
			11-15 stages	118	105971
			16-24 stages	170	105972
			25-30 stages	149	105973
			31-39 stages	180	105974
			40-48 stages	208	105975
			49-60 stages	242	105976
Wear parts kit		SP-NE	12 stages	172	96440231
			25 stages	203	96440230
			33 stages	251	96440229
			45 stages	325	96440228
			60 stages	349	96440227

SP7 & SP9

				£	Product Code
Wear parts kit *		SP	1 stage	61	98766923
			2-5 stages	88	98766939
			6-10 stages	81	98766936
			11-25 stages	121	98766941
			26-50 stages	157	98766947

* The number of stages refers to the wear part kit. For some pump models, more than one wear part kit might be required.

SP

SP8A - model A

		£		Product Code		
		before 9444 (yyww)		after 9444 (yyww)		
Wear parts kit	SP	5-10 stages	191	115046	116	96428935
		12-18 stages	291	115047	151	96428936
	SP-R	21-25 stages	353	115048	209	96428937
		28-37 stages	498	115103	224	96428938
Wear parts kit	SP-N	5-10 stages	191	115587	116	96428935
		12-18 stages	291	115588	151	96428936
		21-25 stages	346	115589	209	96428937
Wear parts kit	SP-NE	5-10 stages	389	115567	384	96428939
		12-18 stages	582	115568	610	96428940
		21-25 stages	731	115569	847	96428941
		26-37 stages		N/A	939	96441561

SP11A & SP14A

		£		Product Code	
Wear parts kit	SP	5 stages	176	75008	
		7-13 stages	346	75009	
		14-18 stages	414	75010	
		20-25 stages	579	75011	
Wear parts kit	SP -N	5 stages	149	75507	
		7-13 stages	323	75508	
		14-18 stages	393	75509	
		20-25 stages	558	75510	

SP11 & SP14

		£		Product Code	
Wear parts kit *	SP	1 stage	66	98766927	
		2-5 stages	80	98766933	
		6-10 stages	88	98766939	
		11-25 stages	112	98766945	

* The number of stages refers to the wear part kit. For some pump models, more than one wear part kit might be required.

SP17 - model A

		£		Product Code	
Wear parts kit	SP; SP-N; SP-R	1-5 stages	281	96421723	
		6-16 stages	366	96421724	
		17-26 stages	476	96421725	
		27-40 stages	688	96440238	
		up to 50 stages	672	96488045	
		up to 60 stages	622	96488046	
Impeller with split cone and nut	SP	77	97506595		
	SP -N	81	96903203		
	SP -R	110	96903204		
Split cone and nut	SP	113	97508279		
	SP -N	47	96901911		
	SP -R	42	96901953		
Split cone with stop nut	SP	108	97508314		
	SP -N	49	96901960		
	SP -R	48	96901961		

SP17 - model B

		Standard bearings		Wear resistant bearings		
		£	Product Code	£	Product Code	
Wear parts kit	SP; SP-N; SP-R	1-5 stages	309	97945520	302	98098277
		6-12 stages	369	97945521	423	98098278
		13-19 stages	424	97937872	462	98098279
		20-30 stages	392	97937873	481	98098280
		31-40 stages	470	97937874	589	98098311
		41-50 stages	497	97937875	694	98098312
		51-60 stages	565	97937876	798	98098313

SP**SP30 - model A**

			£	Product Code
Wear parts kit	SP; SP-N; SP-R	1-5 stages	203	96421732
		6-16 stages	359	96421733
		17-27 stages	441	96421734
		28-39 stages	629	96440246
		40-54 stages	814	96488047
Impeller with split cone and nut		SP	54	97506691
		SP -N	78	96903205
		SP -R	124	96903206
Split cone and nut		SP	63	97509658
		SP -N	46	96901972
		SP -R	55	96901973
Split cone with stop nut		SP	80	97509673
		SP -N	65	96901980
		SP -R	83	96901981

SP30 - model B

		Standard bearings		Wear resistant bearings		
		£	Product Code	£	Product Code	
Wear parts kit	SP; SP-N; SP-R	1-5 stages	257	97945522	291	98098314
		6-15 stages	367	97937877	467	98098315
		16-27 stages	507	97937878	620	98098316
		28-39 stages	626	97937879	793	98098317
		40-54 stages	700	97937880	1,008	98098318

SP46 - model A

			£	Product Code
Wear parts kit	SP; SP-N; SP-R	1-6 stages	395	96440248
		7-10 stages	454	96440250
		11-16 stages	539	96440252
		17-24 stages	649	96440254
		25-37 stages	585	96488048

SP46 - model B

		Standard bearings		Wear resistant bearings		
		£	Product Code	£	Product Code	
Wear parts kit	SP; SP-N; SP-R	1-6 stages	311	97937881	319	98098319
		7-12 stages	389	97937882	469	98098320
		13-18 stages	464	97937883	529	98098321
		19-24 stages	538	97937884	630	98098322
		25-37 stages	627	97937885	838	98098323

SP60 - model A

			£	Product Code
Wear parts kit	SP; SP-N; SP-R	1-6 stages	530	96440369
		7-10 stages	651	96440371
		11-16 stages	740	96440373
		17-22 stages	883	96440375
		23-30 stages	901	96488049

SP60 - model B

		Standard bearings		Wear resistant bearings		
		£	Product Code	£	Product Code	
Wear parts kit	SP; SP-N; SP-R	1-6 stages	307	97937886	316	98098324
		7-12 stages	385	97937887	423	98098325
		13-18 stages	461	97937888	526	98098326
		19-24 stages	487	97937889	627	98098327
		25-30 stages	534	97937890	724	98098328

SP				
SP77 - model C				
			£	Product Code
Wear parts kit	SP; SP-N; SP-R	1-8 stages	420	96440256
		9-14 stages	535	96440258
		15-22 stages	694	96440260
SP95 - model B				
			£	Product Code
Wear parts kit	SP; SP-N; SP-R	1-8 stages	533	96440715
		9-14 stages	648	96440716
		15-20 stages	661	96440717
SP125 - model C & D				
			£	Product Code
Wear parts kit	SP; SP-N; SP-R	1-4 stages	300	96440262
		5-6 stages	394	96440264
		7-10 stages	464	96440266
		11-17 stages	458	96488080
Impeller		SP	151	97506694
		SP -N	162	96903234
		SP -R	431	96903235
Reduced impeller		SP	135	97506727
		SP -N	169	96907105
		SP -R	429	96907107
Split cone with nut		SP	83	96903149
		SP -N	83	96903149
		SP -R	95	96903172
SP160 - model A & B				
			£	Product Code
Wear parts kit	SP; SP-N; SP-R	1-5 stages	376	205117
		6-9 stages	612	205118
		10-15 stages	436	96488081
Impeller		SP	160	97508270
		SP -N	144	96903236
		SP -R	445	96903237
Reduced impeller		SP	148	97508275
		SP -N	171	96907108
		SP -R	OBSOLETE	96907109
Split cone with nut		SP	83	96903149
		SP -N	83	96903149
		SP -R	95	96903172
SP215 - model B & C				
			£	Product Code
Wear parts kit	SP; SP-N; SP-R	1-2 stages	350	185033
		3-4 stages	405	185034
		5-7 stages	596	185035
		8-11 stages	668	185036
Impeller		SP	180	97508277
		SP -N	220	96903238
		SP -R	325	96903239
Reduced impeller		SP	203	97508278
		SP -N	280	96907110
		SP -R	323	96907111
Split cone with nut		SP	130	97524682
		SP -N	118	96903175
		SP -R	192	96903176

MS, MMS, SQ, SQE

SP 4" MOTOR CABLE

		£	Product Code
MS402 cable, 4G 1.5mm ² , 1.7m	plug connection one end	98	95920882
MS4000 Cable, 4G 1.5mm ² , 1.7m	plug connection both ends	102	95920909
MS4000 cable, 4G 1.5mm ² , 1.7m	plug connection one end	71	95920889
MS4000 cable R, 3x1x AWG14,	plug connection both ends	153	95920942

SP 6" MOTOR CABLE

		£	Product Code
MS6000 cable, 4 G 6mm ² , 5m		178	95920945
MS6 Cable 3 x 4 + 1 G 4mm ² , 5m 5.5 - 9.2 kw		POA	96163690
MS6 Cable 3 x AWG 8 + 1 G AWG 8, 5m 11kw - 30kw		POA	96163691

Motor cables for SP pumps please call with pump / motor details, have different connections on motors



SQ, SQE - model B

			£	Product Code	
	SQ(E)-N1-35 to 95		275	96479862	
	SQ(E)-N1-110 to 155		443	96479864	
	SQ(E)-N2- 35 to 70		246	96479866	
	SQ(E)-N2- 85 to 130		340	96479868	
	SQ(E)-NE2- 35 to 65		POA	96439551	
	SQ(E)-NE2- 75 to 115		873	96439552	
Wear part kit	SQ(E)-N3- 30 to 55		245	96479869	
	SQ(E)-N3- 65 to 105		342	96479870	
	SQ(E)-N5 15 to 35		253	96479871	
	SQ(E)-N5 50 to 70		350	96479873	
	SQ(E)-NE5 15 to 35		514	96439560	
	SQ(E)-NE5 45 to 65		865	96439561	
	SQ(E)-N7 15 to 55		251	96479874	
Valve casing complete	Standard		146	96427517	
	NE		221	96439570	
Motor cable model B	Standard	1.5 m	3x1.5 mm ²	60	96160869
		5 m	3x1.5 mm ²	POA	96160870
		10 m	3x1.5 mm ²	POA	96160871
	NE	1.5 m	3x12 AWG	POA	96160882
		5 m	3x12 AWG	POA	96160883
		10 m	3x12 AWG	POA	96160884



SQ pump

BOOSTERS SPARES

HYDRO 2000

	£	Product Code
PFU 2000/4 TIL MS, MSH (STANDARD PUMPS)	OBSOLETE	625234
PFU 2000/9 TIL MF,MFH,ME,MEH,MES(E PUMPS)	OBSOLETE	625243
PFU 2000 EPROM MS (FIXED)	SPECIAL ORDER ONLY	96591305
PFU 2000 EPROM ME (VARIABLE SPEED)	SPECIAL ORDER ONLY	96591307

HOME BOOSTER

	£	Product Code
Pump CM 3-4 l for 3.5 Bar	608	96934524
Pump CM 3-6 l for 4.5 Bar	731	96959353
PM2 Controller	213	96848740
8 Litre Pressure Vessel	66	96526321
Automatic Air Vent, Brass WRAS	44	97909984
22mm JG Plastic Service Valve	44	97563994
Ballcock & Overflow (Mains Inlet) Kit	198	97939412
Internal Hoses Kit (both models)	291	97939421

MINI MONOPRESS

	£	Product Code
SOLENOID PUMP ET508LA	POA	GBOP0001
PIPE KIT-MINI MONOPRESS WITHOUT HIGH/LOW	84	98155765
PIPE KIT-MINI MONOPRESS C/W HIGH/LOW P.S	119	98155768
PIPE KIT-MINI DUOPRESS C/W HIGH/LOW P.S	POA	98155769
WIRE KIT-MINI MONOPRESS WITHOUT HIGH/LOW	POA	98155781
WIRE KIT-MINI MONOPRESS C/W HIGH/LOW P.S	POA	98155784
WIRE KIT-MINI DUOPRESS C/W HIGH/LOW P.S	POA	98155787

IMPRESS

	£	Product Code
Pressure sensor RPS 0-10bar	0	97842228
Pressure sensor RPS 0-10bar complete with fittings and 1.2m cable	POA	96625387
Cabinet panel cpl. (programmed)	POA	98431258
Cabinet top and front panels	321	98675080
STD Control Panel 1 Pump	1,832	96982873
ADV Control Panel 1 Pump	1,988	96982872
ADV Control Panel 2 Pump	2,219	97549894
STD PLC Controller (programmed)	251	97773064
ADV PLC Controller (programmed)	375	97773065
Power Supply Unit	117	98674679
Touch-screen STD (programmed)	1,107	97924046
Touch-screen ADV (programmed)	1,107	97924045
Hoses kit	23	98675140
Single Pump Manifold	261	98675157
Dual Pump Manifold	343	98675158
Non-return valve 1/2" MI / 1/2" FI CIM32	41	GBNR0013
Low pressure switch XP73B642	100	GBPS2202
Control pressure switch BARKSDALE	POA	GBPS2201
Float switch	87	GBPS0070

PRESSURE SWITCHES

	£	Product Code
KPI 35 PRESSURE SWITCH (-0.2 - 8 BAR was Sopac)	205	GBPS0010
Press. switch. Telemechanique, 1 ph /sp	68	96578668

MISCELLANEOUS

	£	Product Code
Transducer 6 bar	POA	GBTD0006
Transducer 10 bar	POA	GBTD0010

BOOSTERS

	£	Product Code
Transducer 0-4 bar	112	99257373
Transducer 0-10 bar	112	99257835
Pressure Gauge	91	99327758
Booster Cable	51	99257837

MOTORS

MG

			£	Product Code
Bearing kit	6204.SYN/6201.SYN		33	96279730
	6304.SYN/6201.SYN		33	96279741
	6305.SYN/6205.SYN		41	96279794
	6306.SYN/6205.SYN		47	96279795
	6306.SYN/6206.SYN		54	96279796
	6308.SYN/6206.SYN		65	96279797
	7306.BE.SYN/6206.SYN		83	96279802
	7308.BE.SYN/6206.SYN		166	96279803
	6308.SYN/6206.SYN		77	96796600
	7308.BE.SYN/6206.SYN		116	96796642
	6309.Z.C4/6309.Z.C4		120	96796674
	7309.BE/6309.Z.C4		146	96796676
	6310.Z.C4/6310.Z.C4		146	96796811
	7310.BE/6310.Z.C4		160	96796812
	6308.SYN/7306.BE_SF		105	96830797
Shaft seal	MG 132 model F/H	V-ring (IP 55)	32	96843458
	MG 132 model F/H	Gamma ring (IP 66)	48	96796191
	MG 160	V-ring (IP 55)	48	96843459
	MG 160	Gamma ring (IP 66)	48	96796191
	MG 180	V-ring (IP 55)	53	96843460
	MG 180	Gamma ring (IP 66)	80	96796802
Terminal board	MG 132 model F/H, MG 160, MG 180		48	96796657
Terminal box cover	MG 132 model F/H		44	96279772
	MG 160, MG 180		73	96796659
Fan	MG 132 model F/H	Ø 128 mm	32	96796189
	MG 132 model F/H	Ø 158 mm	32	96796190
	MG 160	Ø 210 mm CW	67	96796654
	MG 160	Ø 215 mm CW	48	96796650
	MG 160	Ø 210 mm CCW	48	96796648
	MG 160	Ø 215 mm CCW	67	96796652
	MG 180	Ø 240 mm CW	57	96796790
	MG 180	Ø 270 mm CW	80	96796791
	MG 180	Ø 240 mm CCW	57	96796716
	MG 180	Ø 270 mm CCW	80	96796718
Grease nipple	MG 132 model F/H, MG 160, MG 180		38	96796671
Bearing cover	MG 160		38	96796664



MG motors

MOTORS**MGE - Model H, I and J**

		£	Product Code	
Ball bearing kit	6204.SYN/6204.SYN	58	98330603	
	6304.SYN/6204.SYN	61	98330604	
	6305.SYN/6204.SYN	64	98330605	
	6306.SYN/6204.SYN	67	98330606	
	6204.HYB/6204.HYB	182	98330608	
	6304.HYB/6204.HYB	315	98330609	
	6305.HYB/6204.HYB	302	98330610	
	6306.HYB/6204.HYB	309	98330611	
	6305.2Z.C3.SYN+6205	35	98881507	
	6306.2Z.C3.SYN+6205	36	98881508	
	6306.2Z.C3.SYN+6206	53	98881509	
	6308.2Z.C3.SYN+6206	66	98881510	
	6308.2Z.C3.SYN+6306	POA	99124389	
	6308.2Z.C3.SYN+6206	63	98881521	
	6309.Z.C3+6306	76	98881522	
	6207.2Z.C3+6205	47	98881523	
	7306+6206	92	98881524	
	7308+6206	102	98881525	
	6308+6306	80	99099338	
	7309+6306	107	98881526	
	6306.2Z.C3.SYN+7306	91	98881527	
	6308.2Z.C3.SYN+7306	107	98881528	
	6309.Z.C3+7306	85	98881529	
	6309.2Z.C3+6306	144	99177551	
	Hybrid ball bearing kit	6305.2Z.C3.SYN+6205	325	98881530
		6306.2Z.C3.SYN+6205	325	98881531
		6306.2Z.C3.SYN+6206	342	98881532
6308.2Z.C3.SYN+6206		524	98881533	
6308.2Z.C3.SYN+6206		518	98881534	
6308+6306		POA	99124391	
7306+6206		POA	98881537	
7308+6206		POA	98881538	
6306.2Z.C3.SYN+7306		746	98881540	
6308.2Z.C3.SYN+730		931	98881541	
6309.Z.C3+7306		2,058	98881542	
7309+6306	POA	99123455		
Blanking plug, kit	Small	POA	99052475	
	Large	POA	99052476	
Shaft seal	MGE 71/80	37	98334779	
	MGE 90	31	98334780	
Cable glands	1xD7-14 & 2xD5	38	98337336	
	1xD7-14 & 4xD5	41	98337337	
	1xD7-14 & 6xD5	44	98337338	
	10xD7-14	50	98337339	
	10xD5 single entry	47	98337340	
	10xD5 double entry	56	98337341	
Cable glands adapter		62	98345796	
Connector plugs		62	98403113	
Cover for CIM		15	98330622	
Fan	1500-2000 rpm	all models	62	98290123
	2900-4000 rpm	≤ 1.1kW	62	98290123
	2900-4000 rpm	> 1.1kW	62	98290124
	4000-5900 rpm	all models	62	98290123
Fan cover	all models	56	98330566	
MGE - Model F				
Connector plugs		50	96348923	
TPED add-on card		322	96348931	
Terminal box	11 kW	4,910	96348913	
	15 to 22 kW	6,890	96348914	

CONDITIONS OF SALE AND SERVICE

The Customer's attention is particularly drawn to the provisions of condition 13 (Warranty and Limitation of Liability)

1. INTERPRETATION

1.1 The definitions and rules of interpretation in this condition apply in these Conditions.

Agreement: the contract between Grundfos and the Customer for the supply of Equipment and/or Services in accordance with the Order and these Conditions
Business Day: a day other than a Saturday, Sunday or bank or public holiday in England when banks in London are open for non-automated business.

CDM Regulations: the Construction (Design and Management) Regulations 2015
Conditions: these terms and conditions as amended from time to time in accordance with condition 19.

Customer: the person, firm or company who purchases Equipment and/or Services from Grundfos.

Data Protection Legislation: all legislation and regulatory requirements in force from time to time relating to the use of personal data and the privacy of electronic communications, including, without limitation (i) any data protection legislation from time to time in force in the UK including the Data Protection Act 2018 or any successor legislation, as well as (ii) the General Data Protection Regulation (EU) 2016/679 and any other directly applicable European Union regulation relating to data protection and privacy (for so long as and to the extent that the law of the European Union has legal effect in the UK).

Delivery Location: the location set out in the Order for delivery of the Equipment and/or Services or such other location as the parties may agree.

Equipment: all equipment, materials, goods and/or products, or any part or parts thereof, supplied by Grundfos to the Customer under this Agreement or used by Grundfos or its subcontractors in the supply of the Services.

Equipment Specification: any specification for the Equipment, including any relevant plans or drawings, that is agreed in writing by the Customer and Grundfos.

Event of Default: any occurrence of the events set out in condition 17.1 or 17.2.

Force Majeure Event: acts, events, omissions or accidents beyond its reasonable control, including (without limitation) strikes, lock-outs or other industrial disputes (whether involving any supplier, contractor or agent of Grundfos or any other party beyond its reasonable control), failure of a utility service or transport network, act of God, war or threat of war, sabotage, riot, civil commotion, malicious damage, compliance with any law or governmental order, rule, regulation or direction, import or export embargoes, accident, breakdown of plant or machinery, fire, flood, storm or default of suppliers or subcontractors, difficulties in obtaining raw materials, labour, fuel, parts or machinery.

Grundfos: Grundfos Pumps Limited (Company No: 00805960) whose registered office is at Grovebury Road, Leighton Buzzard, Bedfordshire LU7 4TL.

Health and Safety File: the health and safety file required by the CDM Regulations.

In-put Material: all documents, information, tools and materials of the Customer required by Grundfos for the proper provision of the Services.

Intellectual Property Rights: patents, rights to inventions, copyright and related rights, trade marks, business names and domain names, rights in get-up, goodwill and the right to sue for passing off, rights in designs, database rights, rights to use, and protect the confidentiality of, confidential information (including know-how), and all other intellectual property rights, in each case whether registered or unregistered and including all applications and rights to apply for and be granted, renewals or extensions of, and rights to claim priority from, such rights and all similar or equivalent rights or forms of protection which subsist or will subsist now or in the future in any part of the world.

Maintenance Schedule: the maintenance schedule attached to the Order setting out the Services to be supplied by Grundfos to the Customer.

Order: the service support agreement or site visit request form in each case on Grundfos' standard terms (whichever is applicable) including any schedules attached to the service support agreement or site visit request form.

Payment Schedule: the payment schedule attached to the Order setting out the charges applicable for the provision of the Services by Grundfos to the Customer.

Premium Service: the service package in accordance with Grundfos' terms as set out in the Agreement.

Quotation: a written quotation issued by Grundfos.

Services: the services to be provided by Grundfos under this Agreement as set out in the Order or site visit request form together with any other services which Grundfos provides, or agrees to provide, to the Customer.

Site visit request form: Grundfos' Site Visit and Commissioning Request Form, or the equivalent internet log, which the Customer completes.

Time and Materials Rate: the rates set out in the Order.

Warranty: (Subject to condition 5.5) the warranty provided by Grundfos in respect of the Services as set out in condition 8.4 and Equipment as set out in condition 5.1 of these Conditions (as applicable).

Warranty Period: for product codes UPS2, UPS3, ALPHA1, ALPHA2, ALPHA3 and SCALA2 the warranty period shall be 5 years from the date of the manufacture and in all other cases the warranty period shall be 24 months from installation or 30 months from the date of manufacture (whichever expires soonest).

1.2 Headings in these conditions shall not affect their interpretation.

1.3 A person includes a natural person, corporate or unincorporated body (whether or not having separate legal personality).

1.4 The schedules and annexes form part of this Agreement.

1.5 A reference to writing or written includes fax and email and electronic chat messages.

1.6 Any obligation in this Agreement on a person not to do something includes, without limitation, an obligation not to agree, allow, permit or acquiesce in that thing being done.

1.7 References to schedules and annexes are to the schedules and annexes of the Order.

1.8 A reference to a statute or statutory provision is a reference to it as amended or re-enacted. A reference to a statutory provision includes all subordinate legislation made under that statute or statutory provision.

2. Basis of Agreement

2.1 The Order constitutes an offer by the Customer to purchase Equipment and/or Services in accordance with these Conditions.

2.2 The Order shall only be deemed to be accepted on the earlier of:

(a) an authorised representative of Grundfos issues written acceptance of the Order; or

(b) Grundfos delivers the Equipment and/or commences providing Services to the Customer in line with the Order, at which point and on which the date this Agreement shall come into existence.

2.3 Any samples, drawings, descriptive matter or advertising issued by Grundfos and any descriptions of the Equipment or illustrations or descriptions of the Services contained in Grundfos' catalogues or brochures are issued or published for the sole purpose of giving an approximate idea of the Services and/or Equipment described in them.

No warranty or guarantee is given for their accuracy and they shall not form part of this Agreement or have any contractual force.

2.4 These Conditions shall:

(a) apply to and be incorporated into this Agreement;

(b) prevail over any other terms that the Customer seeks to impose or incorporate; and

(c) prevail over any terms or conditions implied by law, trade custom, practice or course of dealing between Grundfos, the Customer or otherwise.

2.5 These Conditions are subject to any terms, conditions and/or provisions set out in the Order. In the event of any conflict between the terms of these Conditions and the terms of the Order, the provisions of the Order shall prevail, but any special terms granted in respect of any one Order are not applicable to any subsequent Order without the express consent in writing by Grundfos.

2.6 Quotations shall only be valid if issued in writing.

2.7 Any Quotations are given on the basis that no Agreement shall come into existence except in accordance with condition 2.2. Any Quotation is valid for a period of 30 days from its date (unless otherwise agreed by Grundfos), provided that Grundfos has not previously withdrawn it.

2.8 All of these Conditions shall apply to the supply of both Equipment and Services except where application to one or the other is specified.

2.9 Any special terms agreed to by Grundfos for any Order shall not apply to any subsequent Order without the express agreement of an authorised representative of Grundfos.

2.10 The Customer is responsible for ensuring the accuracy of the terms of the Order and for providing to Grundfos in good time any necessary information required by Grundfos to enable Grundfos to perform its obligations under the Agreement.

2.11 Grundfos' minimum order value is £55.00. Orders between £55.00 and £335 for pumps or £130 for Category 4 items will be subject to a £37 handling fee.

3. Equipment

3.1 The Equipment is described in Grundfos' catalogues as modified in any Equipment Specification.

3.2 Unless confirmed in writing by Grundfos, Grundfos makes no representation as to the suitability of the Equipment for the Customer's particular purpose. The Customer will be responsible for ensuring that the Equipment is suitable for its particular purpose and Grundfos shall have no liability to the Customer if the Equipment is not suitable for the Customer's particular purpose (so far as legally possible).

3.3 Grundfos (and/or its subcontractors, suppliers or agents) reserves the right to:

(a) change the design, construction or composition of the Equipment or the materials or equipment used in the Equipment as it shall think fit; and

(b) amend the Equipment Specification of the Equipment if required by any applicable statutory requirements, and shall, in any case, notify the Customer of any such changes (if such changes are effected after this Agreement has come into existence but before the Equipment and/or Services have been fully performed).

3.4 Samples of Equipment are available for inspection at Grundfos' offices. The samples are ex-stock at the time of viewing and are without guarantee as to colour or dimensions at the time of delivery. The viewing of a sample does not create a sale by sample.

4. Delivery of Equipment

4.1 Grundfos shall deliver the Equipment to the Delivery Location.

4.2 Delivery of the Equipment shall be completed on:

(a) the completion of unloading of the Equipment at the Delivery Location or (in the absence of any specified Delivery Location by the Customer) upon Grundfos informing the Customer that the Equipment is ready; or

(b) (if the Customer or its agents and/or representatives elect to unload the Equipment themselves) upon Grundfos placing the Equipment at the disposal of the Customer, its agents or representatives at the agreed point.

4.3 Grundfos' obligation under condition 4.1 is limited to delivering the Equipment only as near to the Delivery Location as a safe hard road permits. The Customer is to provide to Grundfos, free of charge, reasonable assistance with unloading (unless the Customer elects to unload the Equipment itself).

4.4 Any dates quoted for delivery of the Equipment are approximate only, and the time of delivery is not of the essence. Grundfos shall not be liable for any delay (or any additional costs arising out of the delay) in delivery of the Equipment that is caused by a Force Majeure Event or the Customer's failure to provide Grundfos with adequate delivery instructions or any other instructions that are relevant to the supply of the Equipment.

4.5 The Equipment may be delivered in advance of the quoted delivery date upon giving reasonable notice to the Customer.

4.6 If the Customer fails to take delivery of the Equipment or fails to give Grundfos adequate delivery instructions at the time stated for delivery (otherwise than by reason of Grundfos' sole fault) then, without prejudice to any other right or remedy available to Grundfos:

(a) delivery of the Equipment shall be deemed to have been completed at 9.00am on the next Business Day following the day on which Grundfos notified the Customer that the Equipment was ready; and

(b) Grundfos may:

(i) Charge a re-delivery fee if delivery is rearranged by Grundfos and the Customer;

(ii) store the Equipment until actual delivery takes place, and charge the Customer for all related costs and expenses (including insurance) of such storage;

(iii) apply Grundfos' returns policy as set out in condition 6; or

(iv) sell the Equipment at the best price readily obtainable and (after deducting all reasonable storage and selling expenses) charge the Customer for any shortfall below the price payable by the Customer for the Equipment and Services (as applicable) under this Agreement.

4.7 If the parties have agreed on express delivery, the dates quoted for such delivery and agreed delivery dates are approximate only as delivery may vary due to factors not within Grundfos' reasonable control, e.g. leisurely or delayed customs clearance or other import or export obstacles. The parties agree that time of delivery is not of the essence and that Grundfos shall not be liable for any delay (or any additional costs arising out of the delay) in delivery caused by such events.

4.8 Grundfos may deliver the Equipment by instalments.

4.9 If Equipment is not received by the customer within 7 days of notification of dispatch by Grundfos or if it is received in a damaged condition or the quantity received differs from the quantity advised by Grundfos the Customer shall notify Grundfos in writing. If such written notice is not received by Grundfos within 10 days of the date of Grundfos' dispatch notification, Grundfos will not be liable in respect of any loss or damaged suffered.

4.10 If a proof of delivery is required a £10 handling fee will apply.

4.11 Proof of delivery shall only be retained by Grundfos for 3 months following delivery. After 3 months it shall be assumed by both parties that delivery successfully took place unless there is evidence to the contrary.

4.12 A £20 handling fee will apply per order to all orders for spares, pump components, spares kits and ancillary items such as flanges, unions etc.

5. **Quality of Equipment**
- 5.1 For the duration of the Warranty Period, Grundfos warrants that the Equipment shall:
- (a) (subject to conditions 5.3 and 5.4) conform in all material respects with the Equipment Specification; and
- (b) be free from defects in design, material and workmanship.
- 5.2 Subject to condition 5.3, if:
- (a) the Customer gives notice in writing during the Warranty Period within 14 days of discovery that some or all of the Equipment does not comply with the Warranty set out in condition 5.1;
- (b) Grundfos is given a reasonable opportunity to examine such Equipment; and
- (c) the Customer (if reasonably asked to do so by Grundfos) returns such Equipment to Grundfos (at Grundfos' cost), then Grundfos shall, at its option, repair or replace the defective Equipment, or refund the price of the defective Equipment in full. Repairs shall only be carried out between 8am and 5pm on Business Days agreed between Grundfos and Customer.
- 5.3 Grundfos shall not be liable for the Equipment's failure to comply with the Warranty if:
- (a) the Customer makes any further use of such Equipment after giving a notice in accordance with condition 5.2 unless otherwise approved by Grundfos (such approval not to be withheld unreasonably);
- (b) the defect arises because the Customer failed to follow Grundfos' or manufacturer's oral or written instructions as to the storage, installation, commissioning, use or maintenance of the Equipment or (if there are none) good trade practice;
- (c) the defect arises as a result of Grundfos following any drawing, design supplied by the Customer or the Equipment Specification;
- (d) the Customer alters, dismantles or repairs such Equipment without the written consent of Grundfos;
- (e) the defect arises as a result of fair wear and tear, wilful damage, negligence, or abnormal working conditions; or
- (f) the Equipment differs from its description as a result of changes made to ensure they comply with applicable statutory or regulatory standards.
- 5.4 Except as provided in this condition 5, Grundfos shall have no liability to the Customer in respect of the Equipment's failure to comply with the Warranty.
- 5.5 The terms of these Conditions shall apply to any repaired or replacement Equipment supplied by Grundfos under condition 5.2 but for the avoidance of doubt, the Warranty Period for any repaired or replaced Equipment shall be 12 months from the date of the repair.
6. **Return of Equipment**
- 6.1 Equipment may not be returned to Grundfos except by the prior written permission of an authorised representative of Grundfos. Contact grundfos-uk@sales.grundfos.com with the original purchase order number to arrange a return. Any such return shall be liable for any handling and restocking fees charged by Grundfos.
- 6.2 All Equipment requested to be returned to Grundfos will be subject to a minimum 35% restocking fee (subject to inspection). Equipment must be returned in its original packaging.
- 6.3 Equipment can only be returned within 6 months of the date of dispatch by Grundfos. All returns will be subject to inspection to ascertain age, condition and type.
- 6.4 Equipment returned without prior authorisation will be refused delivery by Grundfos.
- 6.5 The following Equipment cannot be returned for credit in any circumstance:
- (a) items with a net value of less than £125 (per item);
- (b) repair kits, power cable, engineered to order, third party sourced and obsolete items.
- 6.6 Any Equipment that has been in contact with hazardous liquids must be cleaned, sealed in appropriate packaging, clearly labelled and accompanied by a COSHH certification by the Customer. Any carrier used must be licensed to carry to transport the relevant hazardous liquids.
7. **Title and Risk**
- 7.1 The risk in the Equipment shall pass to the Customer on completion of delivery in accordance with condition 4.
- 7.2 Title to the Equipment shall not pass to the Customer until Grundfos receives payment in full (in cash or cleared funds) for the Equipment and any other equipment or goods that Grundfos has supplied to the Customer in respect of which payment has become due in which case title to the Equipment shall pass at the time of payment of all such sums.
- 7.3 Until title to the Equipment has passed to the Customer, the Customer shall:
- (a) hold the Equipment (or any receipts received from the Customer where the Customer has sold the Equipment) on a fiduciary basis as Grundfos' bailee;
- (b) store the Equipment separately from all other goods held by the Customer (where possible) so that they remain readily identifiable as Grundfos' property;
- (c) not remove, deface or obscure any identifying mark or packaging on or relating to the Equipment (unless reasonably required for the functioning use of the Equipment by the Customer);
- (d) maintain the Equipment in satisfactory condition and keep it insured against all risks for their full price on Grundfos' behalf from the date of delivery;
- (e) notify Grundfos immediately if the Customer becomes subject to any Event of Default;
- (f) give Grundfos such reasonable information relating to the Equipment as Grundfos may require from time to time;
- (g) give Grundfos at least 30 days' notice of its intention to move or relocate the Equipment to a new location. Grundfos may (at Grundfos' sole discretion) supervise the dismantling and removal of the Equipment, and inspect and reinstall the Equipment at the new location. Any supervision and work undertaken in respect of the relocation shall be charged at the prevailing Time and Material Rates and is payable by the Customer in accordance with condition 11; and
- (h) give Grundfos at least 14 days' notice of its intention to take any steps to appoint an administrator.
- 7.4 The Customer may incorporate the Equipment into or with any other goods provided that any new goods incorporating the Equipment shall become the sole and exclusive property of Grundfos and shall be separately stored and marked so as to be identifiable as being manufactured by or containing Equipment belonging to Grundfos.
- 7.5 Subject to condition 7.7, the Customer may resell the Equipment in the ordinary course of its business (but not otherwise) before Grundfos receives payment for the Equipment. However, if the Customer resells the Equipment before that time:
- (a) It does so as principal and not as Grundfos' agent;
- (b) Title to the Equipment shall pass from Grundfos to the Customer immediately before the time at which resale by the Customer occurs.
- 7.6 If before title to the Equipment passes to the Customer the Customer becomes subject to an Event of Default, then, without limiting any other right or remedy Grundfos may have, Grundfos may at any time:
- (a) the Customer's right to resell the Equipment or use it in the ordinary course of its business ceases immediately;
- (b) reasonably require the Customer to deliver up all Equipment in its possession; and
- (c) if the Customer fails to do so promptly, enter any premises of the Customer where the Equipment is stored in order to recover them; and
- (d) the Customer shall pay Grundfos' reasonable costs (including legal costs) for any recovery of the Equipment pursuant to condition 7.7(c).
8. **Supply of Services**
- 8.1 Grundfos shall provide the Services to the Customer in accordance with the Maintenance Schedule in all material respects and in accordance with the duration and timescales specified in the Order.
- 8.2 Grundfos shall use all reasonable endeavours to meet any performance dates for the Services specified in this Agreement, but any such dates shall be estimates only and time shall not be of the essence for the performance of the Services.
- 8.3 Grundfos shall have the right to make any changes to the Services which are necessary to comply with any applicable law or safety requirement, or which do not materially affect the nature or quality of the Services, and Grundfos shall notify the Customer in any such event. If Grundfos requests a change for any other reason, the Customer shall not unreasonably withhold or delay consent to it.
- 8.4 Grundfos warrants to the Customer that the Services will be provided using reasonable care and skill.
- 8.5 Grundfos shall use reasonable endeavours to observe all health and safety rules and regulations, and any other reasonable security requirements that apply at the Customer's premises and that have been communicated to it provided that it shall not be liable under this Agreement if, as a result of such observation, it is in breach of any of its obligations under this Agreement.
9. **Maintenance Service Times**
- 9.1 Services will be carried out during the working times as specified in the Maintenance Schedule.
- 9.2 Grundfos' standard daily fee rates for each individual person are calculated on the basis of an eight-hour day between 8.00am and 5.00pm on Business Days. Grundfos shall be entitled to charge for any Services undertaken outside of these hours at the Time and Materials Rate in effect at the relevant time.
- 9.3 Grundfos shall use reasonable endeavours to attend the Delivery Location, but if Grundfos is prevented by any reason outside his control or under the control of the Customer, from installing the Equipment or carrying out the Services at the time of the visit, it shall not constitute a material breach of this Agreement. If additional visits are required to the Delivery Location which are not accounted for in the Maintenance Schedule, Grundfos reserves the right to charge the Customer at the Time and Materials Rate for all additional time incurred.
10. **Customer's obligations**
- 10.1 The Customer shall:
- (a) ensure that the terms of the Order and the Equipment Specification are complete and accurate;
- (b) co-operate with Grundfos in all matters relating to this Agreement;
- (c) provide Grundfos, its employees, agents, consultants and subcontractors, with access to the Customer's premises, office accommodation and other facilities as reasonably required by Grundfos to provide the Services and/or deliver the Equipment;
- (d) prepare the Customer's premises (or the location where the Services are to be performed) for the supply of the Services and/or the Equipment;
- (e) provide adequate lighting, heating, power and ventilation as per Grundfos' reasonable requirements;
- (f) inform Grundfos' engineer or representative on each visit about any unsatisfactory running or irregular performance of the Equipment or equipment in respect of which the Services are undertaken.
- (g) ensure the Equipment is installed and kept in suitable premises and under suitable conditions, permit only trained and competent personnel to use it and follow any operating instructions as Grundfos may give from time to time;
- (h) provide a site visit request form to Grundfos in respect of any Services to be carried out by Grundfos, its agents, subcontractors, consultants or employees (as the case may be);
- (i) provide to Grundfos, in a timely manner, such In-put Material and other information as Grundfos may require and ensure that it is accurate in all material respects;
- (j) be responsible (at its own cost) for preparing and maintaining the relevant premises for the supply of the Services and/or Equipment, including identifying, monitoring, removing and disposing of any hazardous materials from its premises in accordance with all applicable laws, before and during the supply of the Services and/or Equipment at those premises;
- (k) inform Grundfos of all health and safety rules and regulations and any other reasonable security requirements that apply at the Customer's premises;
- (l) ensure that all In-Put Materials are in good working order and suitable for the purposes for which it is used in relation to the Services;
- (m) keep all Grundfos' materials, equipment, documents and other property (Grundfos Property) at the Customer's premises in safe custody at its own risk, keep all Grundfos Property in good condition until returned to Grundfos and not dispose of or use the Grundfos Property other than in accordance with Grundfos' written instructions and authorisations; and
- (n) obtain and maintain all necessary licences and consents and comply with all relevant legislation in relation to the Services, the installation of the Equipment and the use of In-put Material in all cases before the date on which the Services are to start.
- 10.2 If Grundfos' performance of any of its obligations in respect of the Services is prevented or delayed by any act or omission by the Customer (including its agents, subcontractors, consultants or employees) or failure by the Customer to perform any relevant obligation (Customer Default):
- (a) Grundfos shall without limiting its other rights or remedies have the right to suspend performance of the Services until the Customer remedies the Customer Default, and to rely on the Customer Default to relieve it from the performance of any of its obligations under this Agreement to the extent the Customer Default prevents or delays Grundfos' performance of any of its obligations;
- (b) Grundfos shall not be liable for any costs or losses sustained or incurred by the Customer arising directly or indirectly from Grundfos' failure or delay to perform any of its obligations as set out in this condition 10.2; and
- (c) the Customer shall reimburse Grundfos on written demand for any costs or losses sustained or incurred by Grundfos arising directly or indirectly from the Customer Default.
- 10.3 The Customer shall be liable to pay to Grundfos, on demand, all reasonable costs, charges or losses sustained or incurred by Grundfos (including, without limitation, any direct, indirect or consequential losses, loss of profit and loss of reputation, loss or damage to property and those arising from injury to or death of any person and loss of opportunity to deploy resources elsewhere) arising directly or indirectly from the Customer's fraud, negligence, failure to perform or delay in the performance of any of its obligations under this Agreement, subject to Grundfos confirming such costs, charges and losses to the Customer in writing.

10.4	The Customer shall not, without the prior written consent of Grundfos, at any time from the date of this Agreement to the expiry of 12 months after the last date of supply of the Services, solicit or entice away from Grundfos or employ (or attempt to employ) any person who is, or has been, engaged as an employee of Grundfos in the provision of the Services.		(d) breach of the terms implied by section 12 of the Sale of Goods Act 1979 (title and quiet possession); or (e) defective products under the Consumer Protection Act 1987.
11.	The CDM Regulations		
11.1	The Customer and Grundfos agree that the Customer is to be treated for the purposes of the CDM Regulations as the Client for the purposes of the CDM Regulations.		
11.2	The Customer agrees to ensure that the Works are carried out in accordance with the CDM Regulations.		
11.3	The Customer shall ensure that the Health and Safety File is maintained correctly and is available for inspection in accordance with the CDM Regulations.		
11.4	The Customer shall indemnify and keep the Owner indemnified against liability for any breach of the Customer's obligations under or in connection with this condition 11.		
12.	Charges and Payment		
12.1	The price for the Equipment shall be the price set out in the Order or, if no price is quoted, the price set out in the published price list of Grundfos (or Grundfos as the case may be) as at the date of delivery. Unless otherwise stated in the Order, the price of the Equipment is exclusive of all costs and charges of packaging, insurance, transport of the Equipment, which shall be paid by the Customer when it pays for the Equipment.	13.2	Subject to condition 13.1: (a) Grundfos shall under no circumstances whatsoever be liable to the Customer, whether in contract, tort (including negligence), breach of statutory duty, or otherwise, for any loss of profit, turnover, data, business opportunity, anticipated savings, any indirect or consequential loss or any damage to goodwill arising under or in connection with this Agreement; (b) Grundfos' total liability to the Customer where the Customer has provided Grundfos with incorrect weights, dimensions, capacity performance or other information shall in no circumstances exceed the price of the Equipment supplied in accordance with such incorrect information; and (c) Grundfos' total liability to the Customer in respect of all other losses arising under or in connection with this Agreement, whether in contract, tort (including negligence), breach of statutory duty, or otherwise, shall in no circumstances exceed £1million.
12.2	In the case of Product Services Service contracts, Installation Works and Engineered to Order products Grundfos reserves the right to request a deposit payment and/or payment milestones. The amount or means of calculating such payment shall be set out in the Quotation.	13.3	The terms implied by sections 13 to 15 of the Sale of Goods Act 1979 and the terms implied by sections 3 to 5 of the Supply of Goods and Services Act 1982 are, to the fullest extent permitted by law, excluded from this Agreement. This condition 13 shall survive termination of this Agreement.
12.3	Grundfos reserves the right to require (at its option) a parent company guarantee or a personal guarantee from the directors of the Customer at any time in relation to all outstanding amounts due to Grundfos from the Customer from time to time.	13.4	The Customer shall indemnify Grundfos for any costs suffered by Grundfos for claims from any third party which arise by virtue of the Customer having resold the Equipment (unless such claim arises solely from Grundfos' negligence).
12.4	The charges for Services shall be set out in the Payment Schedule.	13.5	
12.5	Unless stated otherwise all prices are given on a DAP (delivered at place) basis.	14.	Confidentiality and Grundfos' property
12.6	Grundfos reserves the right to: (a) increase its standard daily fee rates for the Services. Grundfos will give the Customer reasonable notice in writing of any such increase before the proposed date of the increase. If such increase is not acceptable to the Customer, it shall notify Grundfos in writing within 14 days of the date of Grundfos' notice and either of Grundfos or the Customer shall have the right, without limiting its other rights or remedies, to terminate this Agreement by giving 14 days' written notice (or any other reasonable notice period if performance of the Order is due to commence within 14 days) to Grundfos or Customer (as applicable); and (b) increase the price of the Equipment, by giving notice to the Customer at any time before delivery, to reflect any increase in the cost of the Equipment to Grundfos that is due to: (i) any factor beyond the control of Grundfos (including foreign exchange fluctuations, increases in taxes and customs' charges and duties, and increases in labour, materials, fuel and other manufacturing costs); (ii) any request by the Customer to change the delivery date(s), quantities or types of Equipment ordered, or the Equipment specification; or (iii) any delay caused by any instructions of the Customer in respect of the Equipment or failure of the Customer to give Grundfos adequate or accurate information or instructions in respect of the Equipment.	14.1	Each party (receiving party) shall keep in strict confidence all technical or commercial know-how, specifications, inventions, processes or initiatives which are of a confidential nature and have been disclosed to the receiving party by the other party (disclosing party), its employees, agents or subcontractors, and any other confidential information concerning the disclosing party's business, its products and services which the receiving party may obtain. The receiving party shall only disclose such confidential information to those of its employees, agents and subcontractors who need to know it for the purpose of discharging the receiving party's obligations under this Agreement, and shall ensure that such employees, agents and subcontractors comply with the obligations set out in this condition as though they were a party to this Agreement. The receiving party may also disclose such of the disclosing party's confidential information as is required to be disclosed by law, any governmental or regulatory authority or by a court of competent jurisdiction. Neither party shall use the other's confidential information for any purpose other than to perform its obligations under this Agreement.
12.7	In respect of Equipment, Grundfos shall invoice the Customer on or at any time after completion of delivery. If delivery of the Equipment is made in instalments, Grundfos may invoice the Customer in instalments. In respect of Services, Grundfos shall invoice the Customer in accordance with the Payment Schedule.	14.2	
12.8	The Customer shall pay each invoice submitted by Grundfos: (a) within 30 days of the date of the invoice or in accordance with any other payment terms agreed by Grundfos in writing; and (b) in full and in cleared funds to a bank account nominated in writing by Grundfos, and time for payment shall be of the essence of this Agreement.	15.	Intellectual Property Rights
12.9	All amounts payable by the Customer under this Agreement are exclusive of amounts in respect of value added tax chargeable from time to time (VAT). The Customer shall pay any VAT which is chargeable on the supply of the Services and/or Equipment at the same time as payment is due for the supply of the Services and/or Equipment.	15.1	(Subject to condition 15.2) all Intellectual Property Rights in or arising out of or in connection with: (a) the Equipment; (b) the Services; or (c) any manuals or documentation given by Grundfos to the Customer, shall be owned by Grundfos and nothing in this agreement shall transfer or assign any such Intellectual Property Rights to the Customer.
12.10	Grundfos may in its sole discretion elect to provide a credit facility to the Customer but is not obliged to do so. Any credit facility offered will be on written terms agreed by Grundfos and the Customer.	15.2	The Customer acknowledges that, in respect of any third party Intellectual Property Rights, the Customer's use of any such Intellectual Property Rights is conditional on Grundfos first obtaining a written licence from the relevant licensor on such terms as will entitle Grundfos to license such rights to the Customer.
12.11	Without prejudice to any other right or remedy that it may have, if the Customer fails to pay Grundfos on the due date, Grundfos may: (a) charge interest on such sum from the due date for payment at an annual rate equal to the set rate of interest provided under the Late Payment of Commercial Debt (Interest) Act 1998 as varied from time to time accruing on a daily basis and being compounded quarterly until payment is made, whether before or after any judgment and the Customer shall pay the interest immediately on demand; (b) charge compensation for late payment at a set rate depending on the size of the debt in accordance with the Late Payment of Commercial Debt Regulations 2002 (SI 2002 No 1674). The minimum charge applicable is £40.00, the maximum applicable is £100.00; (c) appropriate any payment by the Customer to any outstanding invoice as Grundfos may think fit notwithstanding any purported appropriation by the Customer; and (d) suspend the provision of further Services until payment has been made in full.	15.3	The Customer grants to Grundfos a fully paid up, non-exclusive, royalty free, non-transferable licence to copy and modify any In-put Material for the purpose of providing the Services to the Customer.
12.12	The Customer shall pay all amounts due under this Agreement in full without any set-off, counterclaim, deduction or withholding except as required by law. Grundfos may, without limiting its other rights or remedies, set off any amount owing to it by the Customer against any amount payable by Grundfos to the Customer.	15.4	The Customer shall indemnify Grundfos against all liabilities, costs, expenses, damages and losses (including any direct, indirect or consequential losses, loss of profit, loss of reputation and all interest, penalties and legal costs (on a full indemnity basis) and all other reasonable professional costs and expenses) suffered or incurred by Grundfos for actual or alleged infringement of a third party's Intellectual Property Rights arising out of or in connection with Grundfos' use of the Equipment Specification.
12.13	All sums payable to Grundfos under this Agreement shall become due immediately on its termination, despite any other provision. This condition 12.10 is without prejudice to any right to claim for interest under the law, or any such right under this Agreement.	16.	Data protection
12.14	Grundfos shall have a lien on all of the Customer's property in Grundfos' possession for all sums due at any time by the Customer to Grundfos subject to Grundfos giving not less than one month's written notice to the Customer. Grundfos shall be entitled to use, sell and dispose of any such property as agent for the Customer at the Customer's expense. The proceeds of such sale shall be applied towards the payment of monies due to Grundfos and Grundfos shall be discharged of any liability in relation to such property as a result of any sale.	16.1	Both parties will comply with all applicable requirements of the Data Protection Legislation. This condition 16 is in addition to, and does not relieve, remove or replace, a party's obligations under the Data Protection Legislation. In this condition 16 Applicable Laws means (for so long as and to the extent that they apply to the Supplier) the law of the European Union, the law of any member state of the European Union and/or Domestic UK Law; and Domestic UK Law means any Data Protection Legislation from time to time in force in the UK including the Data Protection Act 2018 or any successor legislation.
13.	Warranty and Limitation of Liability	16.2	Without prejudice to the generality of condition 16.1 each party shall, in relation to any Personal Data processed in connection with the performance by that party of its obligations under the Agreement: (a) ensure that it has in place appropriate technical and organisational measures to protect against unauthorised or unlawful processing of Personal Data and against accidental loss or destruction of, or damage to, Personal Data, appropriate to the harm that might result from the unauthorised or unlawful processing or accidental loss, destruction or damage and the nature of the data to be protected, having regard to the state of technological development and the cost of implementing any measures (those measures may include, where appropriate, pseudonymising and encrypting Personal Data, ensuring confidentiality, integrity, availability and resilience of its systems and services, ensuring that availability of and access to Personal Data can be restored in a timely manner after an incident, and regularly assessing and evaluating the effectiveness of the technical and organisational measures adopted by it); (b) assist the other party, at the other party's cost, in responding to any request from a Data Subject and in ensuring compliance with its obligations under the Data Protection Legislation with respect to security, breach notifications, impact assessments and consultations with supervisory authorities or regulators; (c) notify the Customer without undue delay on becoming aware of a Personal Data breach; (d) at the written direction of the other party, delete or return Personal Data and copies thereof to the other party on termination of the agreement unless required by Applicable Law to store the Personal Data; and (e) maintain complete and accurate records and information to demonstrate its compliance with this condition 16.
13.1	<i>THE CUSTOMER'S ATTENTION IS SPECIFICALLY DRAWN TO THIS CONDITION</i> Nothing in these Conditions shall limit or exclude Grundfos' liability for: (a) death or personal injury caused by its negligence, or the negligence of its employees, agents or subcontractors; (b) fraud or fraudulent misrepresentation; (c) breach of the terms implied by section 2 of the Supply of Goods and Services Act 1982 (title and quiet possession);	16.3	Neither party consents to the other appointing any third-party processor of Personal Data under the Contract.
		17.	Termination
		17.1	Without limiting its other rights or remedies, Grundfos or Customer may terminate this Agreement with immediate effect by giving written notice to the other party if: (a) the other party commits a material breach of its obligations under this Agreement and (if such breach is remediable) fails to remedy that breach within 7 days after receipt of written notice to do so;

- (b) the other party takes any step or action in connection with its entering administration, provisional liquidation or any composition or arrangement with its creditors (other than in relation to a solvent restructuring), being wound up (whether voluntarily or by order of the court, unless for the purpose of a solvent restructuring), having a receiver appointed to any of its assets or ceasing to carry on business [or, if the step or action is taken in another jurisdiction, in connection with any analogous procedure in the relevant jurisdiction];
- (c) the other party suspends, or threatens to suspend, or ceases or threatens to cease to carry on all or a substantial part of its business; or
- (d) the other party's financial position deteriorates to such an extent that in the terminating party's opinion the other party's capability to adequately fulfil its obligations under the Contract has been placed in jeopardy.
- 17.2 Without limiting its other rights or remedies, Grundfos may terminate this Agreement with immediate effect by giving written notice to the Customer if:
- (a) there is a change of control of the Customer (as defined in section 574 of the Capital Allowances Act 2001);
- (b) the Customer is unable or unwilling to procure any guarantee required by Grundfos in accordance with condition 12.3; or
- (c) the Customer's financial position deteriorates to such an extent that in Grundfos' opinion the Customer's capability to adequately fulfil its obligations under the Contract has been placed in jeopardy or Customer fails to pay any amount due under this Agreement on the due date for payment.
- 17.3 Without limiting its other rights or remedies, Grundfos may suspend the supply of Services or all further deliveries of Equipment under this Agreement or any other agreement between the Customer and Grundfos if the Customer becomes subject to an Event of Default, or Grundfos reasonably believes that the Customer is about to become subject to any of them.
- 17.4 On termination of this Agreement for any reason:
- (a) the Customer shall immediately pay to Grundfos all of Grundfos' outstanding unpaid invoices and interest and, in respect of Services supplied but for which no invoice has yet been submitted, Grundfos shall submit an invoice, which shall be payable by the Customer immediately on receipt;
- (b) the Customer shall return all of Grundfos' materials and any deliverables which have not been fully paid for and which have not been installed as part of a bigger system. If the Customer fails to do so, then Grundfos may enter the Customer's premises and take possession of them. Until they have been returned, the Customer shall be solely responsible for their safe keeping and will not use them for any purpose not connected with this Agreement;
- (c) the accrued rights and remedies of the parties as at termination shall not be affected, including the right to claim damages in respect of any breach of this Agreement which existed at or before the date of termination or expiry;
- (d) conditions which expressly or by implication have effect after termination shall continue in full force and effect; and
- (e) Grundfos shall have a lien over all of the Customer's property in Grundfos' possession in respect of all sums due at any time from the Customer to Grundfos. Provided that Grundfos gives at least 14 days' prior written notice, Grundfos shall be entitled to use, sell and dispose of such property as agent for and at the expense of the Customer and apply the proceeds towards the payment of monies due and outstanding from the Customer to Grundfos. Thereafter, Grundfos shall be discharged of any liability in respect of the Customer's property.
- 17.5 On termination of this Agreement (however arising), any of these Conditions that expressly or by implication is intended to have effect after termination (or expiry) shall survive and continue in full force and effect.
18. **Force majeure**
Grundfos shall have no liability to the Customer under this Agreement if it is prevented from, or delayed in performing, its obligations under this Agreement or from carrying on its business by any Force Majeure Event.
19. **Variation**
Except as provided in these Conditions, no variation of this Agreement or these Conditions or of any of the documents referred to in them shall be valid unless it is in writing and signed by or on behalf of each of the authorised representatives of the parties.
20. **Waiver**
20.1 A waiver of any right under this Agreement is only effective if it is in writing and it applies only to the circumstances for which it is given. No failure or delay by a party in exercising any right or remedy under this Agreement or by law shall constitute a waiver of that (or any other) right or remedy, nor preclude or restrict its further exercise. No single or partial exercise of such right or remedy shall preclude or restrict the further exercise of that (or any other) right or remedy.
- 20.2 Unless specifically provided otherwise, rights arising under this Agreement are cumulative and do not exclude rights provided by law.
21. **Severance**
21.1 If any provision of this Agreement (or part of any provision) is found by any court or other authority of competent jurisdiction to be invalid, illegal or unenforceable, that provision or part-provision shall, to the extent required, be deemed not to form part of this Agreement, and the validity and enforceability of the other provisions of this Agreement shall not be affected.
- 21.2 If a provision of this Agreement (or part of any provision) is found illegal, invalid or unenforceable, the provision shall apply with the minimum modification necessary to make it legal, valid and enforceable.
22. **Entire agreement**
22.1 This Agreement constitutes the whole agreement between the parties and supersedes all previous agreements between the parties relating to its subject matter.
- 22.2 Each party acknowledges that, in entering into this Agreement, it has not relied on, and shall have no right or remedy in respect of, any statement, representation, assurance or warranty (whether made negligently or innocently) (other than for breach of contract), as expressly provided in this Agreement.
- 22.3 Nothing in this condition shall limit or exclude any liability for fraud.
23. **Assignment**
23.1 The Customer shall not, without the prior written consent of Grundfos, assign, transfer, charge, mortgage, subcontract or deal in any other manner with all or any of its rights or obligations under this Agreement.
- 23.2 Grundfos may at any time assign, transfer, charge, mortgage, subcontract or deal in any other manner with all or any of its rights under this Agreement and may subcontract or delegate in any manner any or all of its obligations under this Agreement to any third party or agent.
- 23.3 Each party that has rights under this Agreement is acting on its own behalf and not for the benefit of another person.
24. **No partnership or agency**
Nothing in this Agreement is intended to, or shall be deemed to, constitute a partnership or joint venture of any kind between any of the parties, nor constitute any party the agent of another party for any purpose. No party shall have authority to act as agent for, or to bind, the other party in any way.
25. **Rights of third parties**
A person who is not a party to this Agreement shall not have any rights under or in connection with it.
26. **Notices**
26.1 Any notice required to be given under this Agreement shall be in writing and shall be delivered personally, or sent by pre-paid first-class post, recorded delivery or by commercial courier to the registered office or the address stated in the Order (or as otherwise notified to the other party in writing).
- 26.2 Any notice shall be deemed to have been duly received if delivered personally, when left at the correct address or, if sent by pre-paid first-class post or recorded delivery, at 9.00am on the second Business Day after posting, or if delivered by commercial courier, on the date and at the time that the courier's delivery receipt is signed.
- 26.3 This condition 26 shall not apply to the service of any proceedings or other documents in any legal action.
- 26.4 A notice required to be given under this Agreement shall also be validly served if sent by e-mail.
27. **Governing law and jurisdiction**
27.1 This Agreement, and any dispute or claim arising out of or in connection with it or its subject matter or formation (including non-contractual disputes or claims), shall be governed by, and construed in accordance with, the law of England and Wales.
- 27.2 The parties irrevocably agree that the courts of England and Wales shall have exclusive jurisdiction to settle any dispute or claim that arises out of, or in connection with, this Agreement or its subject matter or formation (including non-contractual disputes or claims).

GRUNDFOS PUMPS LTD.
Grovebury Road
Leighton Buzzard
Beds LU7 4TL

Tel: 01525 850000
Email: grundfos-uk@sales.grundfos.com

www.grundfos.co.uk

GRUNDFOS 