
DR 4500A Circular Chart Recorder Kit Instruction

Input Kit 30756141-003

Form: 44-45-33-42C
Effective: 4/98

Summary

The input kit contains all the components you need to replace or add an additional input to a DR 4500A recorder. See Table 1 for a list of the kit's contents. Use the following procedure to install the kit. This procedure assumes that the chart door is opened, the chart plate is swung out, and the power is removed.

CE Mark

This Input board meets the requirements for CE Mark Applications.

Kit Contents

Table 1 - List of Kit Contents

Input Upgrade Kit 30756141-003		Quantity
Input PWB	51309352-002	1
3 Pos. Terminal Block	30755139-003	1
0-10Vdc Input Divider	30755232-002	1
Card Guide	30756005-001	2
Tie Wraps	30366609-004	2

WARNING Never access components inside the case with the power applied.

Installation of Card Guides and Input Board(s)

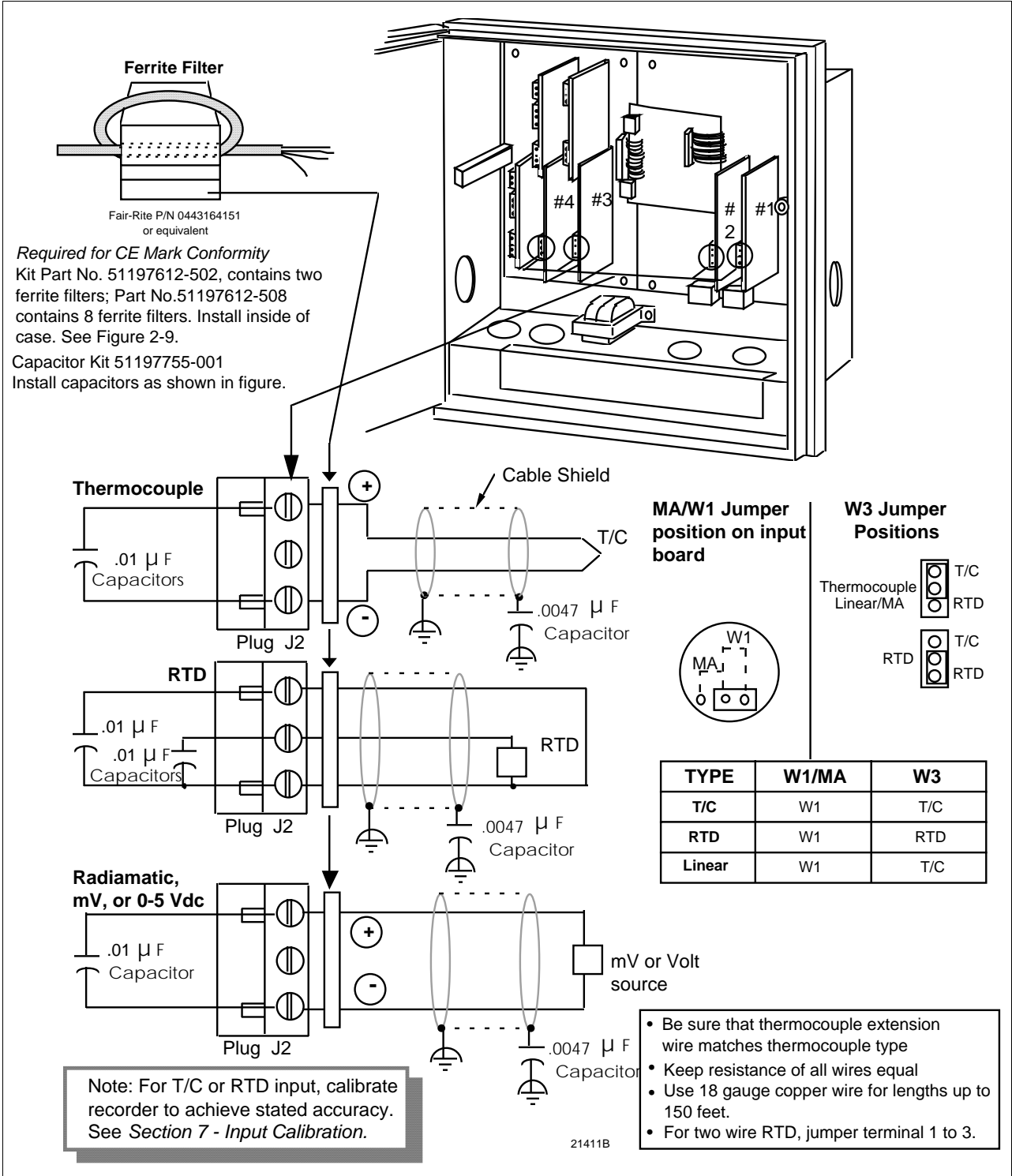
Note: Steps 1 and 2 detail the installation of card guides for adding a second input. If you are adding a third or fourth input into a Truline recorder, locate card guides in appropriate cutouts on the mother PCB. If this is a one for one replacement, skip to step 3.

Step	Action
1	<p>Press card guide directly downward into cutout in main PCB to left of connector J11.</p> <p>CAUTION Do not rock card guides back and forth to insert them into board cutouts, since this can destroy the card guide seats.</p>
2	Press other card guide into cutout in main PCB to right of connector.
3	Set the MA/W1 and W3 jumpers on the input board according to your input type as shown on the attached wiring diagrams.
4	Position new input PCB over guides so its component side faces left wall of recorder and its green input connector is at bottom of PCB. Slide input PCB between guides and press down firmly to seat connector.
5	If you adding a second input on main PCB, cut existing tiewrap that wires from main transformer assembly. Connect twin pair of Orange leads from main transformer to connector J1 on new input PCB. Use new tiewrap to bundle remaining wires
6	If you are wiring a third or fourth input, cut existing tiewrap that retains wires from auxiliary transformer on motherboard. Connect twin pair of White leads from auxiliary transformer to connector J1 on third input PCB, or twin pair of Blue leads to connector J1 on fourth input PCB. Use new tiewrap to bundle remaining wires.
7	We suggest that you change Table 1 in your recorder's model number to show that your recorder now has a second, third, or fourth input by inserting a "1" (Thermocouple, mV, 0-5Vdc, 4-20mA) or "3" (0-10Vdc) in second, third, or fourth digit, as applicable.
8	<p>Wire the input connections according to the input type. The wiring diagrams are attached for your convenience.</p> <p>Refer to the Product Manual supplied with the recorder to make appropriate input configuration selections.</p>
9	Field calibrate added input as outlined in Product Manual.

Input Wiring Procedures

**Thermocouple, RTD,
Radiomatic, mV, or 0-
5 Vdc inputs**

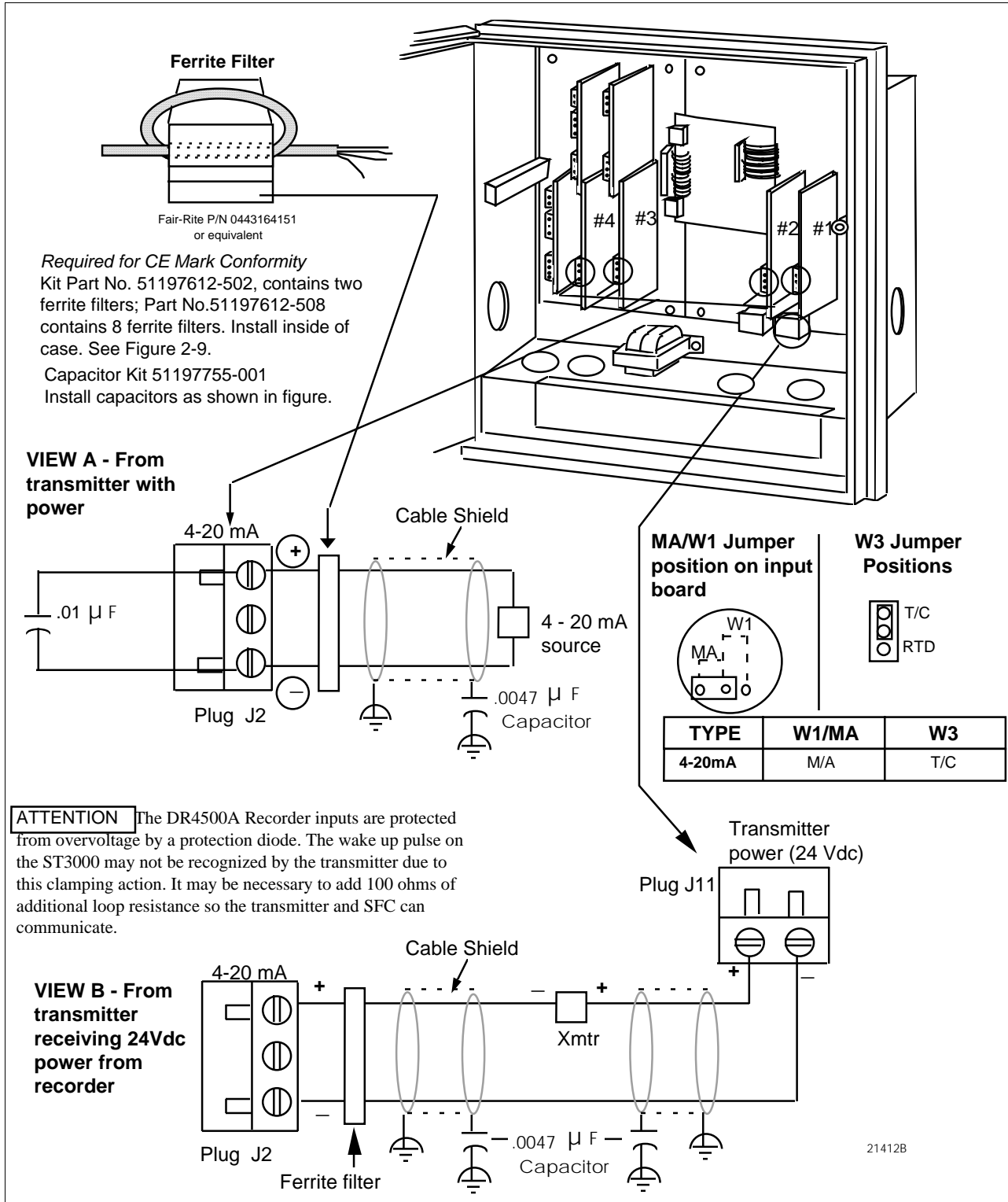
Figure 2-11 Thermocouple, RTD, Radiomatic, mV, or 0-5 Vdc Input Wiring



Input Wiring Procedures, continued

4-20 mA inputs

Figure 2-12 4-20 mA Input Wiring



Input Wiring Procedures, continued

0-10 Volt dc inputs

Figure 2-13 0-10 Volt dc Input Wiring

