

- 1: Programming buttons  
2: When a M5 mounting screw is used, the max. tightening torque is 2 Nm.

Receiver in upper lens, transmitter in lower lens



Made in Germany

Product characteristics

Diffuse reflection sensor

Rectangular, plastics

Connector

Background suppression

Teach function

Electronic lock

Visible laser light, LASER CLASS 1

Range 20...200mm (Range referred to white paper 200 x 200 mm, 90 % remission)

adjustable

Electrical data

Electrical design

DC PNP

Operating voltage [V]

10...36 DC

Current consumption [mA]

15

Type of light

red light 655 nm

Protection class

II

Reverse polarity protection

yes

Outputs

Output function

light-on / dark-on programmable

Voltage drop [V]

< 2.5

Current rating [mA]

200

Short-circuit protection

pulsed

Overload protection

yes

Switching frequency [Hz]

1000

Range

Range [mm]

Range [mm]

20...200 (Range referred to white paper 200 x 200 mm, 90 % remission)

- Object white (90 % remission)

20...200

- Object grey (18 % remission)

20...160

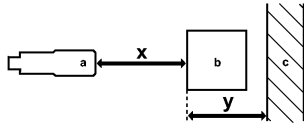
- Object black (6 % remission)

20...80

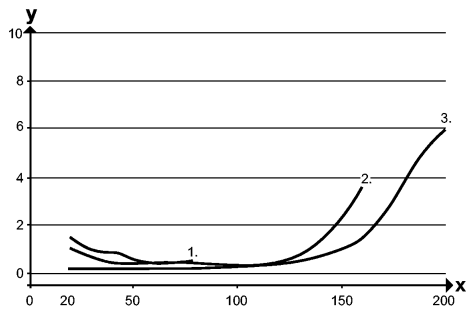
# O5H700 - Diffuse reflection sensor - eclass: 27270904 / 27-27-09-04

Smallest detectable object [Ø in mm]	1.5
Light spot diameter [mm]	1.2

## Accuracy graph



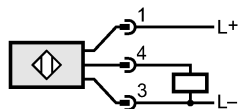
- a: sensor
- b: object
- c: background
- x: distance sensor / object
- y: min. distance object / background



- Values in [mm]
- 1 = object black (6 % remission), background white (90 % remission)
  - 2 = object grey (18 % remission), background white (90 % remission)
  - 3 = object white (90 % remission), background white (90 % remission)

Environment	
Ambient temperature [°C]	-10...60
Protection	IP 67
Tests / approvals	
EMC	EN 60947-5-2
MTTF [Years]	454
Mechanical data	
Housing materials	housing: PA; bezel: high-grade stainless steel; operator interface: TPU
Lens material	PMMA
Weight [kg]	0.067
Displays / operating elements	
Output status indication LED	yellow
Electrical connection	
Connection	M12 connector

## Wiring



Remarks	Laser light CLASS 1 LASER PRODUCT IEC 60825-1 : 2007 complies with 21 CFR 1040.10 except for deviations pursuant to Laser Notice No. 50, dated June 2007 cULus - Class 2 source required
Remarks	

Pack quantity [piece]	1
-----------------------	---