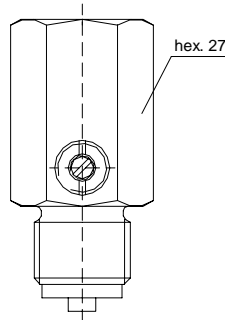
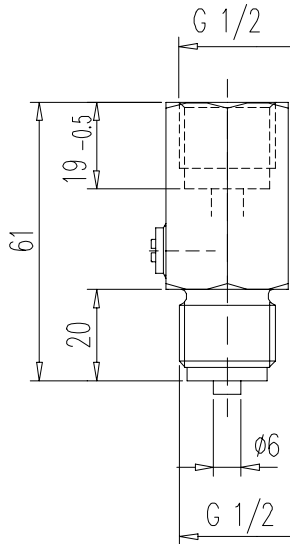
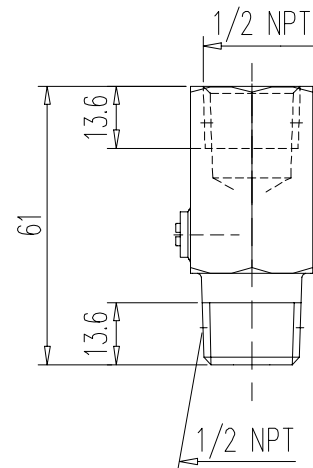


**Type 1**

**Type 2**


Type	Material	Working pressure	Connection thread <sup>1)</sup>	Part no.
1	brass steel st. st.	PN 400 PN 400 PN 400	G 1/2	S005.10.000 S005.10.100 S005.10.200
2	brass steel st. st.	PN 250 PN 400 PN 400	1/2 NPT	S005.10.010 S005.10.110 S005.10.210

Components	Brass	Steel	Stainless steel
	DIN - Material Number		
Body <sup>2)</sup>	brass	steel	1.4571
Screw plug	brass	steel	1.4571
O-ring	NBR		FPM
Adjusting stem	1.4404		

- Surface: steel phosphatized

- Max. temperature: 120°C

1) Also available with connection thread G 1/4, G 3/8 and 1/4 NPT

2) The brass and stainless steel types can be supplied for oxygen service. Please notice order instruction B 3! max. 400 bar at 60°C