

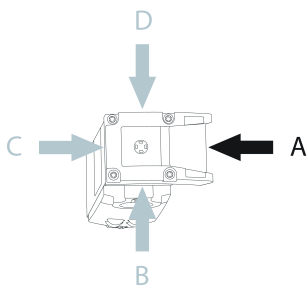
## CET3-AR-CRA-AH-50X-SG-109401 (Rend. sz. 109401)

### Non-contact safety switch CET-AR-..., M12

- ▶ Safety switch with guard locking and integrated evaluation electronics
- ▶ Locking force up to 6500 N
- ▶ Up to 20 switches in series
- ▶ Short circuit monitoring
- ▶ 2 safety outputs (semiconductor outputs)
- ▶ Category 4 / PL e according to EN ISO 13849-1
- ▶ With 2 plug connectors M12
- ▶ Unicode
- ▶ Door monitoring output
- ▶ Indication of the door position by LED
- ▶ Teach-in input
- ▶ Approach direction A (delivery state)



### Approach direction



Horizontal

Can be adjusted in 90° steps

### Safety switch

The device may be operated only in conjunction with the actuator CET-A-....

**Important:** The actuator must be ordered separately.

### Unicode evaluation

Each actuator is highly coded (unicode). The switch detects only taught-in actuators. Additional actuators can be taught-in. Only the last actuator taught-in is detected.

### Solenoid operating voltage

- ▶ DC 24 V +10%, -15%

### Guard locking type

CET3 Closed-circuit current principle, guard locking by spring force. Release by applying voltage to the guard locking solenoid. The door position is also monitored. The door monitoring output OUT D is

set to HIGH as soon as the actuator is above the extended plunger (state: door closed, guard locking not active). The output OUT D also remains set when guard locking is active.

## LED function display

State LED   Status LED

DIA LED   Diagnostics LED

LED 1 rd   freely configurable

LED 2 gn   illuminates when door is closed

## Additional connections

OUT   Monitoring output (semiconductor)

OUT D   Door monitoring output (semiconductor)

RST   Reset input

J   Teach-in input

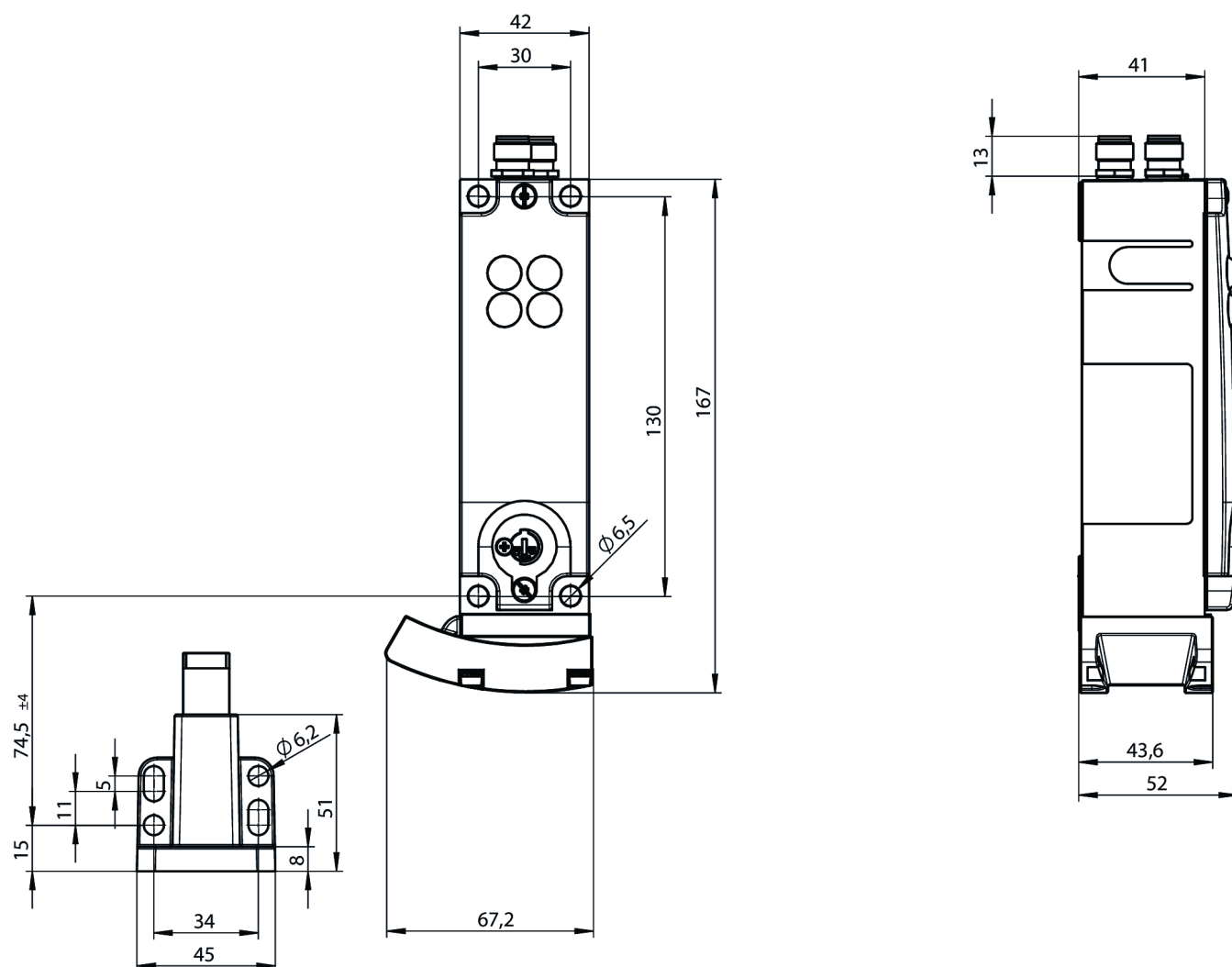
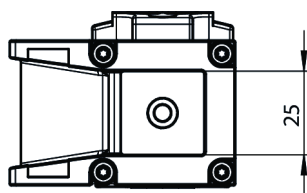
## Category according to EN ISO 13849-1

Due to two redundantly designed semiconductor outputs (safety outputs) with internal monitoring suitable for:

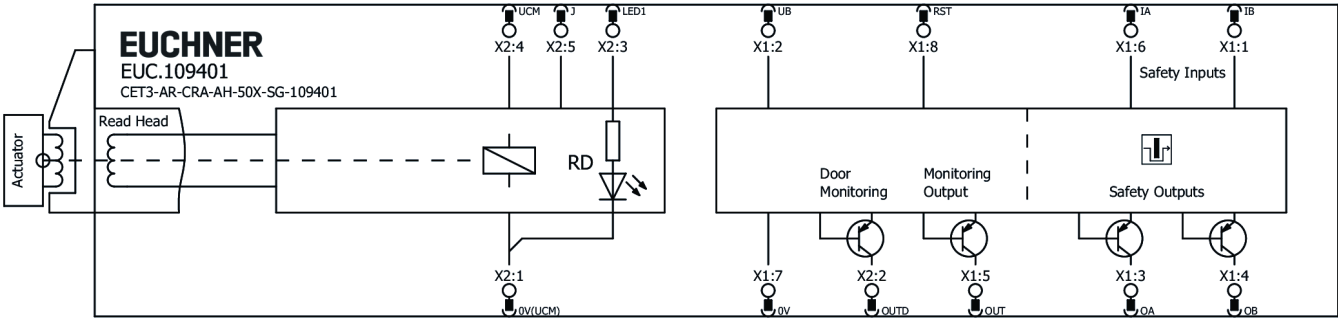
- ▶ Category 4 / PL e according to EN ISO 13849-1
- ▶ The stated safety characteristics apply to any installation orientations of the safety switch.

**Important:** To achieve the stated category in accordance with EN ISO 13849-1, both safety outputs (OA and OB) must be evaluated.

## Dimensional drawings



Connection examples



## Műszaki adatok

### Approvals



### Workspace

Repeat accuracy R

according to EN 60947-5-2 10 %

### Electrical connection values

Fuse

external (operating voltage $U_B$ )	0.25 ... 8 A
external (solenoid operating voltage $U_{CM}$ )	0.5 ... 8 A

Power consumption

Solenoid 11 W

Connecting cable

30V DC, 2A  
(for UL requirement UL category code (CYJV/CYJV7))

Operating voltage DC

$U_B$	24 V DC -15% ... +15% reverse polarity protected, regulated, residual ripple<5%, PELV
LED	24 V DC -15% V DC ... +10% V DC

EMC protection requirements

Acc. to EN IEC 60947-5-3

Utilization category

DC-13	24 V 200 mA (Caution: outputs must be protected with a free-wheeling diode in case of inductive loads)
-------	---

Solenoid operating voltage DC

$U_{CM}$	24 V DC -15% ... +10% reverse polarity protected, regulated, residual ripple<5%, PELV
----------	---

Solenoid duty cycle

100 %

Risk time according to EN 60947-5-3

max. 400 ms

Risk time according to EN 60947-5-3, max. 5 ms  
extension for each additional device

Switching load	
according to UL	24V DC, Class 2 (For alternatives, see operating instructions)
Safety class	III
Current consumption	
$I_{CM}$	450 mA
$I_B$	80 mA
Test pulse duration	max. 1 ms
Degree of contamination (external, according to EN 60947-1)	3

## Teach-in input

Input voltage	
LOW	0 ... 1 V DC
HIGH	15 ... 27.6 V DC

## Monitoring output OUT D

Output type	p-switching, short circuit-proof
Output voltage	
OUT D	$0.8 \times U_B \dots U_B$ V DC
Switching current	
OUT D	1 ... 50 mA
Switching delay from state change	max. 700 ms

## Monitoring output OUT

Output type	p-switching, short circuit-proof
Output voltage	
OUT	$0.8 \times U_B \dots U_B$ V DC
Switching current	
OUT	1 ... 50 mA
Switching delay from state change	max. 400 ms

## Safety outputs OA / OB

Output type	2 semiconductor outputs, p-switching, short circuit-proof
-------------	---

## Output voltage

HIGH U(OA,OB)	UB-1.5V ... UB V DC
LOW U(OA,OB)	0 ... 1 V DC

## Discrepancy time

both safety outputs	max. 10 ms
---------------------	------------

Turn-on time	400 ms
--------------	--------

Off-state current I <sub>r</sub>	max. 0.25 mA
----------------------------------	--------------

## Switching current

per safety output OA / OB	1 ... 200 mA
---------------------------	--------------

## Mechanical values and environment

Approach speed	max. 20 m/min
----------------	---------------

Connection type	2 plug connectors M12, 5- and 8-pin
-----------------	-------------------------------------

Ready delay	10 s
-------------	------

Installation orientation	any
--------------------------	-----

Switching frequency	max. 0.5 Hz
---------------------	-------------

Degree of freedom X	±5 mm
---------------------	-------

Degree of freedom Y	±5 mm
---------------------	-------

Degree of freedom Z	±4 mm
---------------------	-------

Mechanical life	2 x 10 <sup>6</sup>
-----------------	---------------------

Shock and vibration resistance	Acc. to EN IEC 60947-5-3
--------------------------------	--------------------------

Degree of protection	IP67 (When inserted and secured)
----------------------	-------------------------------------

## Ambient temperature

with U <sub>B</sub> = 24 V DC	-20 ... +55 °C
-------------------------------	----------------

## Material

Safety switch housing	Die-cast aluminum
-----------------------	-------------------

Ramp	Stainless steel
------	-----------------

Locking force F <sub>max</sub>	6500 N
--------------------------------	--------

Locking force F <sub>Zh</sub>	5000 N (FZH = FMAX/1.3)
-------------------------------	----------------------------

Guard locking principle	Closed-circuit current principle
-------------------------	----------------------------------

## Characteristic values according to EN ISO 13849-1 and EN IEC 62061

	PL	Maximum SIL	PFH <sub>D</sub>	Category	Mission time
Monitoring of guard locking	PL e	–	$3.1 \times 10^{-9}$	4	20 y

	PL	Maximum SIL	Category	Mission time
Control of guard locking	Depending on external control of guard locking			20 y

## Miscellaneous

The following applies to the approval according to UL

Operation only with UL Class 2 power supply or equivalent measures; see operating instructions



## Letöltések

All documents for this material can be found on our website:

<https://www.euchner.de/hu-hu/a/109401/?#downloads-tab>

**Rendelési adatok**

Rend. sz.	109401
Cikk neve	CET3-AR-CRA-AH-50X-SG-109401
Súly	1,27kg
Global Trade Item Number (GTIN)	4047048006690
Vámtarifaszám	85365019000
ECLASS	27-27-24-05 Safety-related transponder switch with guardlocking

## Tartozékok

### Actuator

#### Actuator CET-A-BWK-50X



**096327**

CET-A-BWK-50X

- ▶ Actuator for read head/safety switch CET
- ▶ Transponder coding
- ▶ Four safety screws M5x16 included

#### Actuator CET-A-BWR-50X-170115



**170115**

CET-A-BWR-50X-170115

- ▶ Actuator for read head/safety switch CET
- ▶ Transponder coding
- ▶ Improved properties for use in a harsh environment (contamination, chips)
- ▶ Four safety screws M5x16 included

### Connection material

#### Connecting cable with 2 plug connectors M12, 5-pin, 1.5 m, AIDA standard



**159356**

C-M12F05-05X034PU01,5-M12M05-159356

- ▶ M12 female plug to M12 plug connector, 5-pin
- ▶ Straight female plug and plug connector
- ▶ Connecting cable according to AIDA standard
- ▶ PUR cable, sheath color gray
- ▶ Cable length 1.5 m



**159363**

C-M12F05-05X034PU01,5-M12M05-159363

- ▶ M12 female plug to M12 plug connector, 5-pin
- ▶ Straight female plug and plug connector
- ▶ Connecting cable according to AIDA standard
- ▶ PUR cable, sheath color yellow
- ▶ Cable length 1.5 m

#### Connecting cable with 2 plug connectors M12, 5-pin, 10 m



**100181**

C-M12F05-05X034PV10,0-M12M05-100181

- ▶ M12 female plug to M12 plug connector, 5-pin
- ▶ Straight female plug and plug connector
- ▶ PVC cable
- ▶ Cable length 10 m



**119947**

C-M12F05-05X034PU10,0-M12M05-119947

- ▶ M12 female plug to M12 plug connector, 5-pin
- ▶ Straight female plug and plug connector
- ▶ PUR cable
- ▶ Cable length 10 m

#### Connecting cable with 2 plug connectors M12, 5-pin, 10 m, AIDA standard



**159360**

C-M12F05-05X034PU10,0-M12M05-159360

- ▶ M12 female plug to M12 plug connector, 5-pin
- ▶ Straight female plug and plug connector
- ▶ Connecting cable according to AIDA standard
- ▶ PUR cable, sheath color gray
- ▶ Cable length 10 m



## 159920

C-M12F05-05X034PU10,0-M12M05-159920

- ▶ M12 female plug to M12 plug connector, 5-pin
- ▶ Straight female plug and plug connector
- ▶ Connecting cable according to AIDA standard
- ▶ PUR cable, sheath color yellow
- ▶ Cable length 10 m

### Connecting cable with 2 plug connectors M12, 5-pin, 15 m, AIDA standard



## 159361

C-M12F05-05X034PU15,0-M12M05-159361

- ▶ M12 female plug to M12 plug connector, 5-pin
- ▶ Straight female plug and plug connector
- ▶ Connecting cable according to AIDA standard
- ▶ PUR cable, sheath color gray
- ▶ Cable length 15 m



## 159921

C-M12F05-05X034PU15,0-M12M05-159921

- ▶ M12 female plug to M12 plug connector, 5-pin
- ▶ Straight female plug and plug connector
- ▶ Connecting cable according to AIDA standard
- ▶ PUR cable, sheath color yellow
- ▶ Cable length 15 m

### Connecting cable with 2 plug connectors M12, 5-pin, 1 m, AIDA standard



## 159355

C-M12F05-05X034PU01,0-M12M05-159355

- ▶ M12 female plug to M12 plug connector, 5-pin
- ▶ Straight female plug and plug connector
- ▶ Connecting cable according to AIDA standard
- ▶ PUR cable, sheath color gray
- ▶ Cable length 1 m



## 159362

C-M12F05-05X034PU01,0-M12M05-159362

- ▶ M12 female plug to M12 plug connector, 5-pin
- ▶ Straight female plug and plug connector
- ▶ Connecting cable according to AIDA standard
- ▶ PUR cable, sheath color yellow
- ▶ Cable length 1 m

### Connecting cable with 2 plug connectors M12, 5-pin, 20 m



## 100182

C-M12F05-05X034PV20,0-M12M05-100182

- ▶ M12 female plug to M12 plug connector, 5-pin
- ▶ Straight female plug and plug connector
- ▶ PVC cable
- ▶ Cable length 20 m



## 119971

C-M12F05-05X034PU20,0-M12M05-119971

- ▶ M12 female plug to M12 plug connector, 5-pin
- ▶ Straight female plug and plug connector
- ▶ PUR cable
- ▶ Cable length 20 m

### Connecting cable with 2 plug connectors M12, 5-pin, 3 m, AIDA standard



## 159357

C-M12F05-05X034PU03,0-M12M05-159357

- ▶ M12 female plug to M12 plug connector, 5-pin
- ▶ Straight female plug and plug connector
- ▶ Connecting cable according to AIDA standard
- ▶ PUR cable, sheath color gray
- ▶ Cable length 3 m



## 159364

C-M12F05-05X034PU03,0-M12M05-159364

- ▶ M12 female plug to M12 plug connector, 5-pin
- ▶ Straight female plug and plug connector
- ▶ Connecting cable according to AIDA standard
- ▶ PUR cable, sheath color yellow
- ▶ Cable length 3 m

## Connecting cable with 2 plug connectors M12, 5-pin, 5 m



**100180**

C-M12F05-05X034PV05,0-M12M05-100180

- ▶ M12 female plug to M12 plug connector, 5-pin
- ▶ Straight female plug and plug connector
- ▶ PVC cable
- ▶ Cable length 5 m



**119932**

C-M12F05-05X034PU05,0-M12M05-119932

- ▶ M12 female plug to M12 plug connector, 5-pin
- ▶ Straight female plug and plug connector
- ▶ PUR cable
- ▶ Cable length 5 m

## Connecting cable with 2 plug connectors M12, 5-pin, 5 m, AIDA standard



**159358**

C-M12F05-05X034PU05,0-M12M05-159358

- ▶ M12 female plug to M12 plug connector, 5-pin
- ▶ Straight female plug and plug connector
- ▶ Connecting cable according to AIDA standard
- ▶ PUR cable, sheath color gray
- ▶ Cable length 5 m



**159365**

C-M12F05-05X034PU05,0-M12M05-159365

- ▶ M12 female plug to M12 plug connector, 5-pin
- ▶ Straight female plug and plug connector
- ▶ Connecting cable according to AIDA standard
- ▶ PUR cable, sheath color yellow
- ▶ Cable length 5 m

## Connecting cable with 2 plug connectors M12, 5-pin, 8 m, AIDA standard



**159359**

C-M12F05-05X034PU08,0-M12M05-159359

- ▶ M12 female plug to M12 plug connector, 5-pin
- ▶ Straight female plug and plug connector
- ▶ Connecting cable according to AIDA standard
- ▶ PUR cable, sheath color gray
- ▶ Cable length 8 m



**159919**

C-M12F05-05X034PU08,0-M12M05-159919

- ▶ M12 female plug to M12 plug connector, 5-pin
- ▶ Straight female plug and plug connector
- ▶ Connecting cable according to AIDA standard
- ▶ PUR cable, sheath color yellow
- ▶ Cable length 8 m

## Connecting cable with 2 plug connectors M12, 8-pin, 1 m



**123430**

C-M12M08-08X025PV01,0-M12F08-123430

- ▶ 8-pin M12 male plug, straight
- ▶ 8-pin M12 female plug, straight
- ▶ PVC cable
- ▶ Cable length 1 m

## Connecting cable with 2 plug connectors M12, 8-pin, 10 m



**123433**

C-M12M08-08X025PV10,0-M12F08-123433

- ▶ 8-pin M12 male plug, straight
- ▶ 8-pin M12 female plug, straight
- ▶ PVC cable
- ▶ Cable length 10 m

## Connecting cable with 2 plug connectors M12, 8-pin, 2 m



**123431**

C-M12M08-08X025PV02,0-M12F08-123431

- ▶ 8-pin M12 male plug, straight
- ▶ 8-pin M12 female plug, straight
- ▶ PVC cable
- ▶ Cable length 2 m

## Connecting cable with 2 plug connectors M12, 8-pin, 5 m



**123432**

C-M12M08-08X025PV05,0-M12F08-123432

- ▶ 8-pin M12 male plug, straight
- ▶ 8-pin M12 female plug, straight
- ▶ PVC cable
- ▶ Cable length 5 m

## Connecting cable with angled plug connector M12, 5-pin, 10 m



**113187**

C-M12F05-05X025PU10,0-MA-113187

- ▶ M12 female plug, 5-pin
- ▶ Angled plug connector
- ▶ PUR cable
- ▶ Cable length 10 m
- ▶ Cable exit A (right)
- ▶ With flying lead



**113190**

C-M12F05-05X025PU10,0-MA-113190

- ▶ M12 female plug, 5-pin
- ▶ Angled plug connector
- ▶ PUR cable
- ▶ Cable length 10 m
- ▶ Cable exit C (left)
- ▶ With flying lead

## Connecting cable with angled plug connector M12, 8-pin, 10 m



**113188**

C-M12F08-08X025PU10,0-MA-113188

- ▶ M12 female plug, 8-pin
- ▶ Angled plug connector
- ▶ Cable outlet A (right)
- ▶ PUR cable
- ▶ Cable length 10 m
- ▶ With flying lead



**113189**

C-M12F08-08X025PU10,0-MA-113189

- ▶ M12 female plug, 8-pin
- ▶ Angled plug connector
- ▶ Cable outlet C (left)
- ▶ PUR cable
- ▶ Cable length 10 m
- ▶ With flying lead

## Connecting cable with angled plug connector M12, 8-pin, 20 m



**120998**

C-M12F08-08X025PU20,0-MA-120998

- ▶ M12 female plug, 8-pin
- ▶ Angled plug connector
- ▶ Cable outlet A (right)
- ▶ PUR cable
- ▶ Cable length 20 m
- ▶ With flying lead



**120999**

C-M12F08-08X025PU20,0-MA-120999

- ▶ M12 female plug, 8-pin
- ▶ Angled plug connector
- ▶ Cable outlet C (left)
- ▶ PUR cable
- ▶ Cable length 20 m
- ▶ With flying lead

## Connecting cable with plug connector M12, 8-pin, 10 m



**100178**

C-M12F08-08X025PV10,0-MA-100178

- ▶ M12 female plug, 8-pin
- ▶ Straight plug connector
- ▶ PVC cable
- ▶ Cable length 10 m
- ▶ With flying lead



**115113**

C-M12F08-08X025PU10,0-MA-115113

- ▶ M12 female plug, 8-pin
- ▶ Straight plug connector
- ▶ PUR cable
- ▶ Cable length 10 m
- ▶ With flying lead

## Connecting cable with plug connector M12, 8-pin, 20 m



**100179**

C-M12F08-08X025PV20,0-MA-100179

- ▶ M12 female plug, 8-pin
- ▶ Straight plug connector
- ▶ PVC cable
- ▶ Cable length 20 m
- ▶ With flying lead



**115114**

C-M12F08-08X025PU20,0-MA-115114

- ▶ M12 female plug, 8-pin
- ▶ Straight plug connector
- ▶ PUR cable
- ▶ Cable length 20 m
- ▶ With flying lead

## Connecting cable with plug connector M12, 8-pin, 30 m



**115116**

C-M12F08-08X025PV30,0-MA-115116

- ▶ M12 female plug, 8-pin
- ▶ Straight plug connector
- ▶ PVC cable
- ▶ Cable length 30 m
- ▶ With flying lead



**115257**

C-M12F08-08X025PU30,0-MA-115257

- ▶ M12 female plug, 8-pin
- ▶ Straight plug connector
- ▶ PUR cable
- ▶ Cable length 30 m
- ▶ With flying lead

## Connecting cable with plug connector M12, 8-pin, 5 m



**100177**

C-M12F08-08X025PV05,0-MA-100177

- ▶ M12 female plug, 8-pin
- ▶ Straight plug connector
- ▶ PVC cable
- ▶ Cable length 5 m
- ▶ With flying lead



**115112**

C-M12F08-08X025PU05,0-MA-115112

- ▶ M12 female plug, 8-pin
- ▶ Straight plug connector
- ▶ PUR cable
- ▶ Cable length 5 m
- ▶ With flying lead

## Connecting cable with straight plug connector M12, 5-pin, 10 m



**100184**

C-M12F05-05X034PV10,0-MA-100184

- ▶ M12 female plug, 5-pin
- ▶ Straight plug connector
- ▶ PVC cable
- ▶ Cable length 10 m
- ▶ With flying lead



**113640**

C-M12F05-05X034PU10,0-MA-113640

- ▶ M12 female plug, 5-pin
- ▶ Straight plug connector
- ▶ PUR cable
- ▶ Cable length 10 m
- ▶ With flying lead

## Connecting cable with straight plug connector M12, 5-pin, 20 m



**100185**

C-M12F05-05X034PV20,0-MA-100185

- ▶ M12 female plug, 5-pin
- ▶ Straight plug connector
- ▶ PVC cable
- ▶ Cable length 20 m
- ▶ With flying lead



**113682**

C-M12F05-05X034PU20,0-MA-113682

- ▶ M12 female plug, 5-pin
- ▶ Straight plug connector
- ▶ PUR cable
- ▶ Cable length 20 m
- ▶ With flying lead

## Connecting cable with straight plug connector M12, 5-pin, 30 m



**122784**

C-M12F05-05X034PU30,0-MA-122784

- ▶ M12 female plug, 5-pin
- ▶ Straight plug connector
- ▶ PUR cable
- ▶ Cable length 30 m
- ▶ With flying lead

## Connecting cable with straight plug connector M12, 5-pin, 5 m



**100183**

C-M12F05-05X034PV05,0-MA-100183

- ▶ M12 female plug, 5-pin
- ▶ Straight plug connector
- ▶ PVC cable
- ▶ Cable length 5 m
- ▶ With flying lead



**113620**

C-M12F05-05X034PU05,0-MA-113620

- ▶ M12 female plug, 5-pin
- ▶ Straight plug connector
- ▶ PUR cable
- ▶ Cable length 5 m
- ▶ With flying lead

## Connecting cable with straight plug connector M12, 5-pin, 50 m



**156064**

C-M12F05-05X034PV50,0-MA-156064

- ▶ M12 female plug, 5-pin
- ▶ Straight plug connector
- ▶ PVC cable
- ▶ Cable length 50 m
- ▶ With flying lead



## M12 extension PUR, 5-pin, plug connectors at both ends, 10 m



**115565**

C-M12F05-05X025PU10,0-M12M05-115565

- ▶ M12 female plug, 5-pin (angled) to M12 plug connector (straight)
- ▶ plug connectors at both ends
- ▶ PUR cable
- ▶ Cable length 10 m
- ▶ with cable exit A (right)



**115566**

C-M12F05-05X025PU10,0-M12M05-115566

- ▶ M12 female plug, 5-pin (angled) to M12 plug connector (straight)
- ▶ plug connectors at both ends
- ▶ PUR cable
- ▶ Cable length 10 m
- ▶ with cable exit C (left)

## Passive distribution module



**120861**

AC-DP-04-SA-120861

- ▶ Connection of up to 4 CES-AR, CET-AR, CTP-AR, MGBS-AR and ESL-AR
- ▶ LEDs for the indication of the door position on each port
- ▶ Can be connected in series

## Strapping plug M12



**097645**

AC-SP-A0-SJ-097645

- ▶ Strapping plug
- ▶ M12 male plug, 4-pin

## Y-distributor M12 with connecting cable, without IO-Link evaluation



**111696**

AC-YD-V0,2-SBB-111696

- ▶ For series connection of AR/BR safety switches in switch chains without IO-Link evaluation
- ▶ Y-distributor M12 with connecting cable, 2 x 5-pin, 1 x 8-pin
- ▶ Straight plug connector
- ▶ PVC cable
- ▶ Cable length 0.2 m



**112395**

AC-YD-V1,0-SBB-112395

- ▶ For series connection of AR/BR safety switches in switch chains without IO-Link evaluation
- ▶ Y-distributor M12 with connecting cable, 2 x 5-pin, 1 x 8-pin
- ▶ Straight plug connector
- ▶ PVC cable
- ▶ Cable length 1 m

## Y-distributor M12 without IO-Link evaluation



**097627**

AC-YD-SBB-097627

- ▶ For series connection of AR/BR safety switches in switch chains without IO-Link evaluation
- ▶ Y-distributor M12, 2 x 5-pin, 1 x 8-pin
- ▶ Straight plug connector

## Function expansion

### Auxiliary key release for read head/switch CET



**098850**

SCHLUESSEL-HILFSENTRIEGELUNG

- ▶ Identical locking
- ▶ Key removable in "unlocked" and "locked" positions

### Cover for actuator CET



**124979**

AM-C-124979

- ▶ Horizontal and vertical mounting option on the actuator
- ▶ Mounting using 4 screws M5x16 (included with the actuator)

### Cover for read head and actuator CET



**098807**

CET ABDECKUNG LINKS

- ▶ Cover for read heads / safety switches CET and actuators CET
- ▶ For approach direction C



**098808**

CET ABDECKUNG RECHTS

- ▶ Cover for read heads / safety switches CET and actuators CET
- ▶ For approach direction A

### Emergency release for CET



**103714**

AE-M-CET-103714



**159080**

AE-M-CET-159080

### Holder for lockout bar for CET actuator



**156338**

AY-CHN-A1-156338

- ▶ Holder (incl. wire rope) for lockout bar CET

### Lockout bar and holder for CET actuator



**155865**

AE-SET-LCHN-A1-155865

- ▶ Prevents unintentional closing of the door
- ▶ Can be secured with padlocks

### Lockout bar for CET actuator



**122609**

AE-L-CET-122609

- ▶ Prevents unintentional closing of the door
- ▶ Can be secured with padlocks
- ▶ Not suitable in combination with cover AM-C for actuator CET



**156429**

AE-L-CET-156429

- ▶ Prevents unintentional closing of the door
- ▶ Can be secured with padlocks

## Ramp for safety switch and read head CET



**114091**  
CET-DR

- ▶ Ramp for CET product family
- ▶ double ramp



**174215**  
CET-WR-174215

- ▶ Ramp for CET product family
- ▶ Wide opening angle 90°
- ▶ Suitable for hinged doors with extremely small door radii up to 200 mm

## Teach-in adapter for CET 1/3



**125496**  
AC-TA-A1-SG-125496

- ▶ Teach-in adapter
- ▶ Optional accessory for teaching-in a new actuator for safety switch with M12 plug connector.

## Metal bolt

### Bolt for safety switch CET



**104309**  
RIEGEL CET-A-C

- ▶ Bolt for switch family CET
- ▶ Steel bolt
- ▶ For doors hinged on the left or right
- ▶ With door stop
- ▶ Suitable for a door gap of approx. 15 mm



**109672**  
RIEGEL CET-A-C-C2308

- ▶ Bolt for switch family CET
- ▶ Steel bolt
- ▶ For doors hinged on the left or right
- ▶ Without door stop
- ▶ Suitable for a door gap of 15 mm

## Mounting accessories

### Efficient protection against tampering for safety switch mounting



**161344**  
AM-C-SW4-V3-161344

- ▶ Plastic inserts for hexagon socket screws a/f 4
- ▶ Efficient protection against tampering for safety switch mounting
- ▶ The packaging includes inserts for 18 screws



**161348**  
AM-C-SW5-V3-161348

- ▶ Plastic inserts for hexagon socket screws a/f 5
- ▶ Efficient protection against tampering for safety switch mounting
- ▶ The packaging includes inserts for 18 screws

### Mounting plate EM-P actuator for safety switch CET



**126400**  
AM-P-126400

- ▶ Mounting plate for CET actuator
- ▶ Suitable for mounting on aluminum profiles of width 30/40/50 mm
- ▶ Suitable for the mounting plates AM-P-126399 and AM-P-126398

## Mounting plate EM-P handle for safety switch CET and CTS



**126398**

AM-P-126398

- ▶ Mounting plate with handle (handle included)
- ▶ for hinged or sliding doors
- ▶ Horizontal and vertical mounting possible
- ▶ Suitable for aluminum profiles of width 30/40/50 mm
- ▶ Suitable for the CET mounting plates AM-P-126399 and AM-P-126400
- ▶ Suitable for the CTS mounting plates AM-P-171775 and AM-B-171776

## Mounting plate EM-P switch for safety switch CET



**126399**

AM-P-126399

- ▶ Mounting plate for CET read heads/switches
- ▶ Direct mounting on aluminum profiles of width 30/40/50 mm
- ▶ Suitable for the mounting plates AM-P-126400 and AM-P-126398

## Mounting plate EMP-B-... for actuator CET



**106694**

EMP-B-CET

- ▶ Mounting plate for actuator CET for hinged or sliding doors
- ▶ Suitable for aluminum profiles 40 ... 45 mm
- ▶ Horizontal and vertical mounting
- ▶ Made of aluminum

## Mounting plate EMP-L-... for CET read heads/switches



**106695**

EMP-L-CET

- ▶ Mounting plate for CET read heads/switches
- ▶ for hinged or sliding doors
- ▶ Suitable for aluminum profiles 40 ... 45 mm
- ▶ Horizontal and vertical mounting
- ▶ Suitable for CET with escape release