

## R05 Miniature ported pressure regulator (stainless steel)

- Port size: 1/4 PTF
- Metallic parts meet NACE\*
- Designed for use in corrosive environments
- Adjusting knob has snap-action lock

- Applications include marine environment, oil and gas production, chemical and industrial compressed air systems

\* National Association of Corrosion Engineers (NACE) MR-01-75) defines requirements for sulphide stress cracking resistant materials used in well-head and other corrosive environments.



### Technical features

**Medium:**  
Compressed air or neutral gases  
Other media on request

**Operating pressure:**  
20 bar max (290 psi)

**Pressure range:**  
0,3 ... 8,5 bar (4 ... 123 psi),  
0,3 ... 3,5 bar (4 ... 50 psi)

**Diaphragm:**  
With or without relieving


**Typical flow:**  
see below

**Gauge ports:**  
1/8 PTF

**Ambient/Media temperature:**  
Acetal bonnet  
-25 ... +66°C (-13 ... 150°F)  
T-handle  
-25 ... +80°C (-13 ... 176 °F)  
- 40°C (-40°F) version on request  
Air supply must be dry enough to avoid ice formation at temperatures below +2°C (+35 °F).

**Materials:**  
Body and valve: 1.4104 (316) stainless steel  
Bonnet: 1.4104 (316) stainless steel with T-handle or Acetal with stainless steel adjusting screw  
Valve seat: Acetal  
Springs: 1.4319 (302) Stainless steel  
Elastomers: FPM

### Technical data, Standard models

Symbol	Port size	Outlet pressure range (bar)	Flow *1) (dm <sup>3</sup> /s)	Diaphragm	Bonnet type	Weight (kg)	Model
	1/4 PTF	0,3 ... 8,5	7	Relieving	Knob (Acetal)	0,15	R05-200-RNLA
	1/4 PTF	0,3 ... 8,5	7	Relieving	T-handle (stainless steel)	0,26	R05-232-RNLA

\*1) Typical flow with 10 bar inlet pressure, 6,3 bar set pressure and 1 bar droop form set.

### Option selector

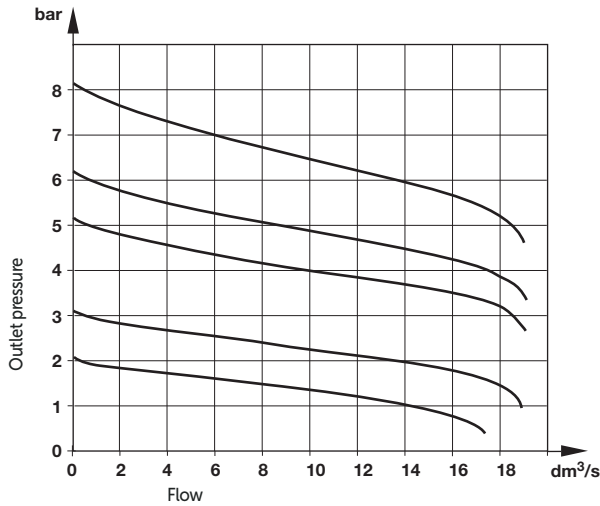
**R05-2★★-★N★A**

Bonnet	Substitute	Outlet pressure adjustment ranges *	Substitute	Diaphragm	Substitute
Standard knob (Acetal)	00	0,3 ... 3,5 bar	E	Relieving	R
T-handle (Stainless steel)	32	0,3 ... 8,5 bar	L	Non relieving	N

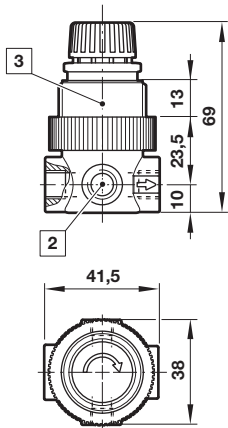
\* Outlet pressure can be adjusted to pressures in excess of, and less than, those specified. Do not use these units to control pressures outside of the specified ranges.

## Air flow characteristics

R05 – Port size: 1/4 PTF, inlet pressure: 12 bar, pressure range: 0,3 ... 8,5 bar



## Regulator with Acetal bonnet



- [2] Gauge port: 1/8 PTF, standard units are shipped with two plugs for sealing gauge ports.
- [3] Panel mounting hole diameter 30 mm, Panel thickness 0 ... 6 mm

## Warning

These products are intended for use in industrial compressed air systems only. Do not use these products where pressures and temperatures can exceed those listed under »**Technical features/ data**«.

Before using these products with fluids other than those specified, for non-industrial applications, life-support systems or other applications not within published specifications, consult Norgren Ltd.

Through misuse, age, or malfunction, components used in fluid power systems can fail in various modes.

## Accessories



\*1) Stainless steel items not strictly to NACE standard MR-01-75.

## Spares kit



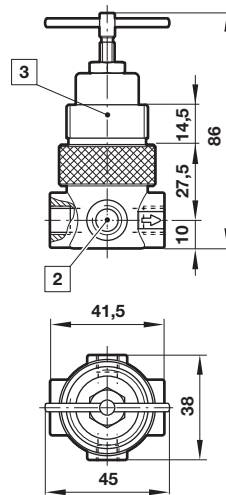
3407-71 (Relieving)

3407-72 (Non-relieving)

Dimensions in mm  
Projection/First angle



## Regulator with stainless steel T-handle



The system designer is warned to consider the failure modes of all component parts used in fluid power systems and to provide adequate safeguards to prevent personal injury or damage to equipment in the event of such failure.

System designers must provide a warning to end users in the system instructional manual if protection against a failure mode cannot be adequately provided.

System designers and end users are cautioned to review specific warnings found in instruction sheets packed and shipped with these products.