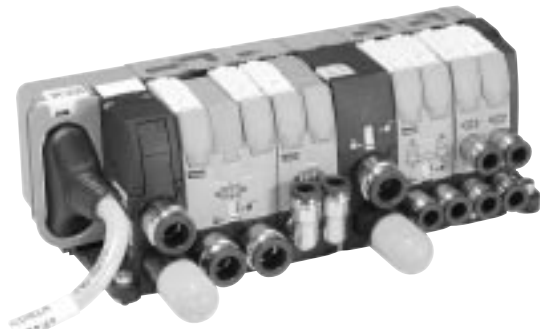




“V” Series Valve Island Modules with Integrated Connections

When the number of valves is larger, modular islands are easily assembled using the integrated electrical connection series. These islands are then connected to the control PLC, with a multi-connector cable or with a field bus connection.

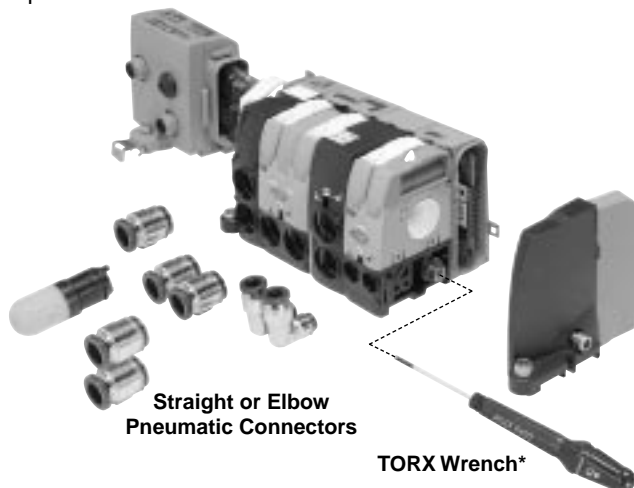


“V” Series with 20-Pin Connector



“V” Series with Field Bus Connection

“V” Series modules are easily assembled to form a complete manifold. All pneumatic connectors are of the push-in tube type. When the valve island has been installed, it is a simple operation to separate the field bus module from the valve island using the quick release lever. Modules with different functions and flow passages may be combined in the same island manifold, giving total flexibility to adapt to all machine requirements.



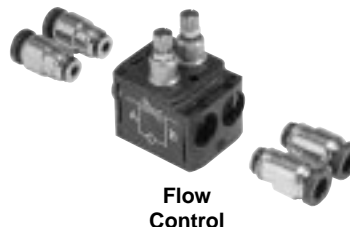
Straight or Elbow
Pneumatic Connectors

TORX Wrench*

* Maximum torque rating 10.6 in. lbs. (1.2 Nm).

“P” Series Peripheral Modules

Peripheral Modules are available and can be mounted directly to valves or used as a stand alone product. These modules answer the complementary needs of the cylinders, flow controls, pressure regulation or positioning.



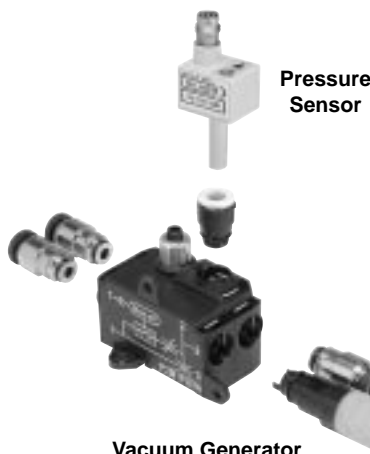
Flow
Control



Pressure
Regulator



Dual P.O.
Check Valve



Pressure
Sensor

Vacuum Generator

A



**M8 Female Individual
Connectors with
Flying Lead Cable
(For Solenoid Pilots)**



With LED Voltage Surge Protection and Flying Lead Cable IP67 Protected		Weight (oz)	Order Code
	2 m Cable	2.19	P8LS08L226C
	5 m Cable	5.47	P8LS08L526C
	9 m Cable	9.88	P8LS08L926C

**Pneumatic Connectors
for Size 1 Modules**



		Elbow Version		Straight Version	
		Weight (oz)	Order Code	Weight (oz)	Order Code
Tube Push-in Connector	5/32" = 4mm OD	0.18	CMD04-1	0.07	FMD04-1
	6mm OD	0.18	CMD06-1	0.11	FMD06-1
	1/4" OD	0.18	CMD07-1B	0.11	FMD07-1B
Muffler for Exhaust Port	—	—	—	0.11	MMDVA1
Plug	—	—	—	0.18	PMDYY1
Double Male Union (For Peripheral Valve Modules)	—	—	—	0.21	HMDXX1

Note: 85 Durometer minimum for pneumatic connectors.

A



M8 Female Individual Connectors with Flying Lead Cable (For Solenoid Pilots)



With LED Voltage Surge Protection and Flying Lead Cable IP67 Protected		Weight (oz)	Order Code
	2 m Cable	2.19	P8LS08L226C
	5 m Cable	5.47	P8LS08L526C
	9 m Cable	9.88	P8LS08L926C

Pneumatic Connectors for Size 1 Modules



		Elbow Version		Straight Version	
		Weight (oz)	Order Code	Weight (oz)	Order Code
Tube Push-in Connector	5/32" = 4mm OD	0.18	CMD04-1	0.07	FMD04-1
	6mm OD	0.18	CMD06-1	0.11	FMD06-1
	1/4" OD	0.18	CMD07-1B	0.11	FMD07-1B
Muffler for Exhaust Port	—	—	—	0.11	MMDVA2
Plug	—	—	—	0.18	PMDYY1
Double Male Union (For Peripheral Valve Modules)	—	—	—	0.21	HMDXX1

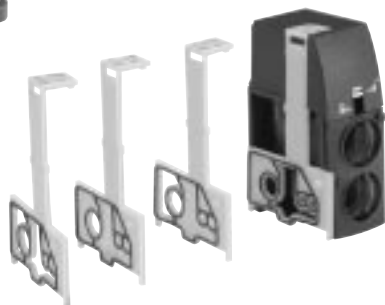
Note: 85 Durometer minimum for pneumatic connectors.



P2M1K0TASD



P2M2HXT01



P2M2BXT0A

Island Modules

Module	Weight (oz)	Order Code
Pneumatic Head and Tail Set	2.26	P2M2HXT01*
Pneumatic Head and Tail Set with TORX Screwdriver	2.50	P2M2HXT0T*
TORX Screwdriver Only	.24	P2M1K0TAFD
Intermediate Supply Module (With a set of 4 Configuration Plates)	1.48	P2M2BXT0A*

* Use Fittings for Size 2 Modules Only.



A

“V” Series Basic Modules Size 1 (Without Pneumatic Connectors)



Single Solenoid



Double Solenoid

Size 1 Electro-Pneumatic Island Valve Modules, 24VDC

4-Way / 2-Position / Single Valve

	Solenoid	Weight	Part Number
	Single Solenoid (Monostable)	3.32 oz	P2M1V4ES2CV
	Double Solenoid (Bistable)	3.63 oz	P2M1V4EE2CV

4-Way / 2-Position / Dual Valve

	Solenoid	Weight	Part Number
	Solenoid Spring with Exhaust Check	3.63 oz	P2M1VJEE2CV

3-Way / 2-Position / Dual Valve

	Solenoid	Weight	Part Number
	Double Solenoid NC + NC with Exhaust Check	3.74 oz	P2M1VDEE2CV
	Double Solenoid NO + NO with Exhaust Check	3.74 oz	P2M1VCEE2CV
	Double Solenoid NC + NO with Exhaust Check	3.74 oz	P2M1VEEE2CV
	Single Solenoid NC with Exhaust Check	3.60 oz	P2M1V3ES2CV
	Center Exhaust = dual 3/2 NC + NC without Exhaust Check	3.74 oz	P2M1VGEE2CV

Pneumatic Connectors for Size 1 Modules



PMDYY1

HMDXX1

MMDVA2



FMD04-1

CMD04-1



FMD07-1B

CMD07-1B

		Elbow Version		Straight Version	
		Weight (oz)	Order Code	Weight (oz)	Order Code
Tube Push-in Connector	5/32" = 4mm OD	0.18	CMD04-1	0.07	FMD04-1
	6mm OD	0.18	CMD06-1	0.11	FMD06-1
	1/4" OD	0.18	CMD07-1B	0.11	FMD07-1B
Muffler for Exhaust Port	—	—	—	0.11	MMDVA2
Plug	—	—	—	0.18	PMDYY1
Double Male Union (For Peripheral Valve Modules)	—	—	—	0.21	HMDXX1

Note: 85 Durometer minimum for pneumatic connectors.

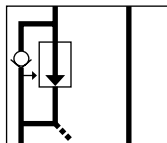
Note: Bold Options Standard



A

Size 1 Pressure Regulation Modules

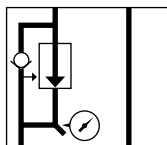
The thrust developed by a cylinder often requires adjustment by controlling pressure to the front or back of the piston. The pressure regulation module enables manual adjustment of pressure with visual indication provided by the pressure gauge.



P2M1PXSN

Pressure Regulation Module Without Gauge Size 1

Pressure Range	Size 1
0 to 30 PSI	P2M1PXST Weight 4.06 oz
0 to 60 PSI	P2M1PXSL Weight 4.06 oz
0 to 120 PSI	P2M1PXSN Weight 4.06 oz



P2M1PXSG



P2M1K0GN

Pressure Regulation Module With Gauge Size 1

Pressure Range	Size 1	Replacement Gauge
0 to 30 PSI	P2M1PXSR Weight 5.12 oz	P2M1K0GT Weight 1.06 oz
0 to 60 PSI	P2M1PXSM Weight 5.12 oz	P2M1K0GL Weight 1.06 oz
0 to 120 PSI	P2M1PXSG Weight 5.12 oz	P2M1K0GN Weight 1.06 oz



Pneumatic Connectors for Size 1 Regulators

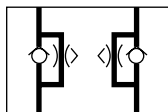
		Elbow Version		Straight Version	
		Weight (oz)	Order Code	Weight (oz)	Order Code
Tube Push-in Connector	5/32" = 4mm OD	0.18	CMD04-1	0.07	FMD04-1
	6mm OD	0.18	CMD06-1	0.11	FMD06-1
	1/4" OD	0.18	CMD07-1B	0.11	FMD07-1B
Plug	—	—	—	0.18	PMDYY1
Double Male Union (For Peripheral Valve Modules)	—	—	—	0.21	HMDXX1

Note: 85 Durometer minimum for pneumatic connectors.



Dual Flow Control

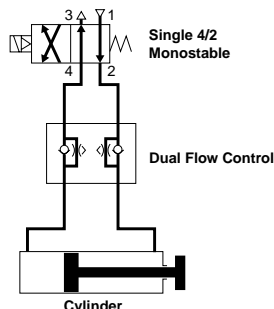
By controlling the exhaust flows of a double-acting cylinder, this module can adjust both speeds — extend and retract. It may be plugged into the valve module output ports or mounted close to the cylinder in its in-line version.



P2M1PXFA

Application

On a double-acting cylinder, extend and retract speeds are adjusted separately by control of air flow exhaust. The control becomes more precise when the flow adjustment is close to the cylinder. The examples show different solutions which are dependent upon the valve-to-cylinder distance and accessibility to the cylinder



Dual Flow Control Size 1

Description	Size 1
Dual Flow Control Module	P2M1PXFA Weight 1.06 oz

Dual Flow Control Size 2

Description	Size 2
Dual Flow Control Module	P2M2PXFA Weight 1.59 oz



Pneumatic Connectors for Size 1 Dual P.O. Check Valves

		Elbow Version		Straight Version	
		Weight (oz)	Order Code	Weight (oz)	Order Code
Tube Push-in Connector	5/32" = 4mm OD	0.18	CMD04-1	0.07	FMD04-1
	6mm OD	0.18	CMD06-1	0.11	FMD06-1
	1/4" OD	0.18	CMD07-1B	0.11	FMD07-1B
Double Male Union (For Peripheral Valve Modules)	—	—	—	0.21	HMDXX1

Note: 85 Durometer minimum for pneumatic connectors.



Pneumatic Connectors for Size 2 Dual P.O. Check Valves

		Elbow Version		Straight Version	
		Weight (oz)	Order Code	Weight (oz)	Order Code
Tube Push-in Connector	6mm OD	0.18	CMD06-2	0.11	FMD06-2
	1/4" OD	0.18	CMD07-2B	0.11	FMD07-2B
	8mm OD	0.21	CMD08-2	0.14	FMD08-2
	3/8" OD	0.21	CMD09-2B	0.14	FMD09-2B
	10mm OD	0.25	CMD10-2	0.18	FMD10-2
	12mm OD	0.28	CMD12-2	0.21	FMD12-2
	1/2" OD	—	—	0.21	FMD13-2B
Double Male Union (For Peripheral Valve Modules)	—	—	—	0.28	HMDXX2

Note: 85 Durometer minimum for pneumatic connectors.



A

Vacuum Generator Module



Depending on the application requirements, this vacuum generator module may be controlled by single or by a dual 3/2 Moduflex valve module. The Vacuum Module has an integrated blow-off chamber that helps destroy the degree of vacuum. Blow-off can be increased with the addition of a control air input to the blow-off port on the vacuum module. A Ø6 mm port is available for an optional plug-in vacuum sensor for delivering a vacuum feedback signal.

Vacuum Generator Module Size 1

Description	Size 1
Vacuum Generator	P2M1PXVA Weight .88 oz



Pneumatic Connectors for Size 1 Vacuum Generator Modules

		Elbow Version		Straight Version	
		Weight (oz)	Order Code	Weight (oz)	Order Code
Tube Push-in Connector	5/32" = 4mm OD	0.18	CMD04-1	0.07	FMD04-1
	6mm OD	0.18	CMD06-1	0.11	FMD06-1
	1/4" OD	0.18	CMD07-1B	0.11	FMD07-1B
Muffler for Exhaust Port	—	—	—	0.11	MMDVA-1
Double Male Union (For Peripheral Valve Modules)	—	—	—	0.21	HMDXX1

Note: 85 Durometer minimum for pneumatic connectors.

Vacuum Generator Module Model Number Index

