

Oriental motor

ORIENTAL MOTOR U.S.A. Corp.
570 Alaska Avenue
Torrance, CA 90503
1-800-GO-VEXTA (468-3982)

Item # AZD-CD, AZ Series Driver with Built-in Controller (Stored Data) (Single-Phase 200-240/Three-Phase 200-240 VAC)



*α*STEP Hybrid Step-Servo

*α*STEP AZ Series Closed Loop Driver with Built-in Controller (Stored Data). The built-in controller (stored data) allows for easy networking and simplified multi-axis control.

- Controller connection options: 1: I/O, 2: Modbus (RTU/RS-485) or 3: FA Network (network converter)



Web Price

\$711.00

[Specifications](#) | [Controller Specifications](#) | [Dimensions](#) | [System](#)

Specifications

Product Line	Oriental Motor®
Driver Type	Closed Loop, Absolute, Built-in Controller (Stored Data)
Power Supply	Single-Phase/Three-Phase 200-240 VAC
RoHS Compliant	These products do not contain substances that exceed the regulation values in the RoHS Directive.
Safety Standards	UL CSA CE

Controller Specifications

Network Input	16 Points
Network Output	16 Points

Protocol	Modbus RTU Mode
Electrical Characteristics	EIA-485 Based, Straight Cable Use twisted-pair cables (TIA/EIA-568B CAT5e or greater recommended) the maximum total extension length is 50 m.
Transmission/Reception Mode	Half-duplex communication and Start-stop synchronization (data: 8 bits, stop bit: 1 bit or 2 bits, parity: none, even, or odd)
Baud Rate	Select from 9600 bps, 19200 bps, 38400 bps, 57600 bps, 115200 bps, or 230400 bps
Connection Type	Up to 31 units can be connected to a single programmable controller (master unit).

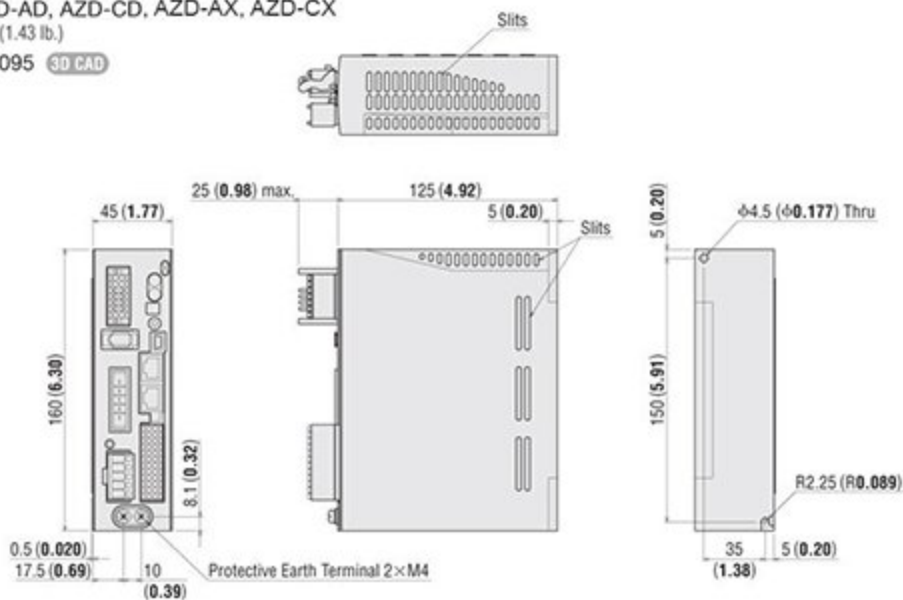
Dimensions

Dimensions Unit = mm (in.)

Drivers

Driver: AZD-AD, AZD-CD, AZD-AX, AZD-CX
Mass: 0.65 kg (1.43 lb.)

2D CAD B1095 3D CAD



Includes

- Power Input Terminal / Regeneration Resistor Connector (CN4)
Connector: 05JFAT-SAXGDK-H5.0 (J.S.T.)
- Control I/O Connector (CN5)
Connector: DFMC1.5/12-ST-3.5 (Phoenix Contact)
- Connector for 24 VDC Power-Supply Input / Regeneration Unit Terminal Input Power Removal Signal Control I/O Connector
Connector: DFMC1.5/7-ST-3.5-LR (Phoenix Contact)
Connector Wiring Lever: J-FAT-0T (J.S.T.)

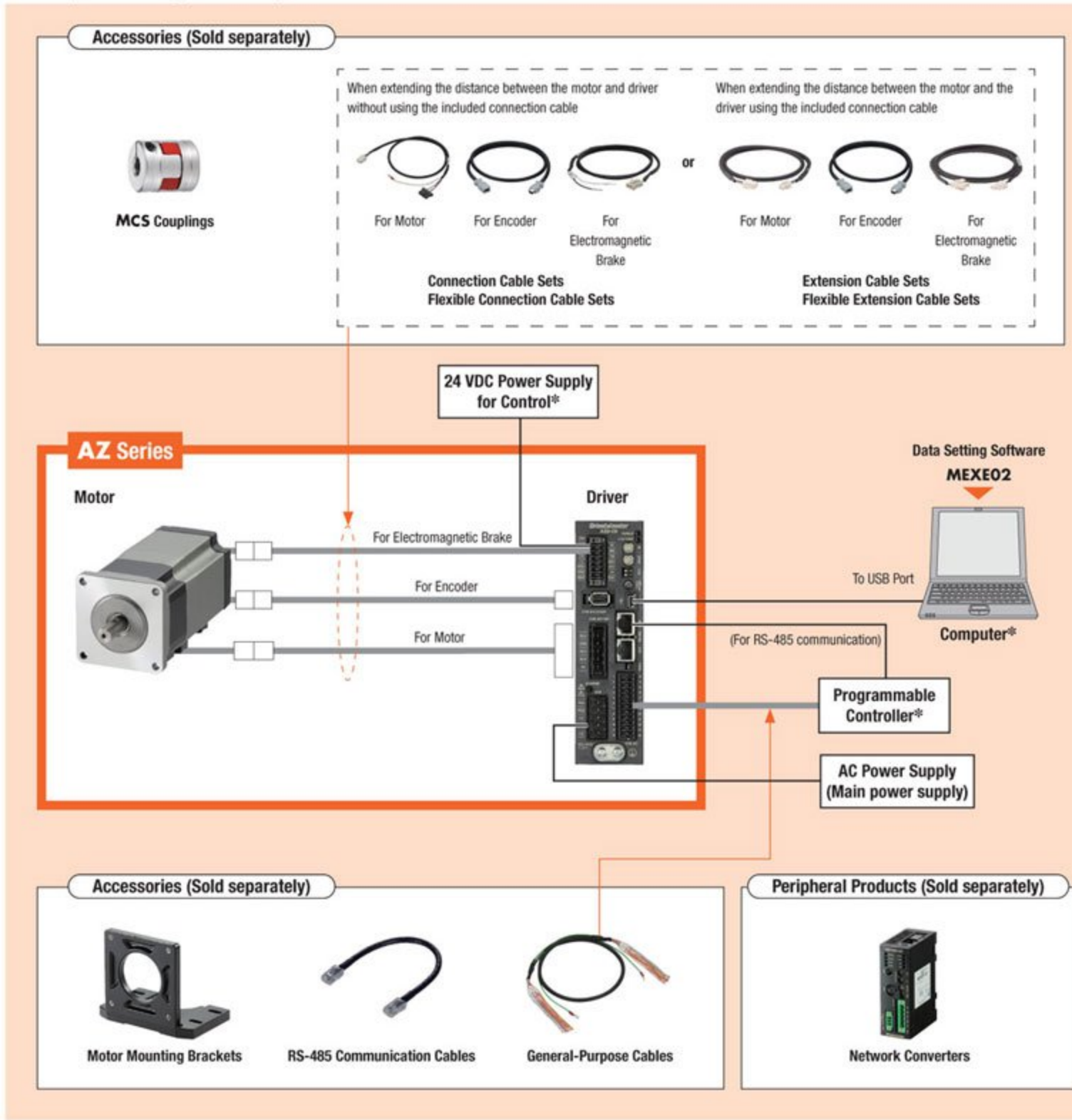
System

System Configuration

Built-in Controller Type, Standard Type with Electromagnetic Brake

An example of a configuration using I/O control or RS-485 communication is shown below.

* No



¹ Quoted Ship Date for orders placed before 12:00 pm PST. Quantities may affect Shipping Date.

Site Search...

