



AZ/AZM 200-B30-RTAG1P1

- One-hand emergency exit, even in de-energised condition
- Actuator for hinged guards
- With door detection sensor T
- Easy and intuitive operation
- No risk of injury from protruding actuator
- No supplementary door handles required
- Does not protrude into the door opening
- Various handles available
- Greater mechanical stability

Data

Ordering data

Note (Delivery capacity)	Not available!
Product type description	AZ/AZM 200-B30-RTAG1P1
Article number (order number)	101178738
EAN (European Article Number)	4030661314716
eCl@ss number, version 12.0	27-27-26-06
eCl@ss number, version 11.0	27-27-26-06
eCl@ss number, version 9.0	27-27-26-06
ETIM number, version 7.0	EC001487
ETIM number, version 6.0	EC001487

Approvals - Standards

Note	Certification in combination with the AZ /AZM 200
------	---

General data

Housing material	Plastic, glass-fibre reinforced thermoplastic, self-extinguishing
Material of the actuator	Zinc die-cast
Material of the operators	Aluminium, plastic coating
Emergency exit material	Metal, plastic-coated
Gross weight	1,080 g

General data - Features

Emergency exit	Yes
Door detection sensor	Yes

Mechanical data

Grip	handle
Mechanical life, minimum	1,000,000 Operations
Door hinge	Right
Holding force F_{Zh} in accordance with EN ISO 14119	2,000 N
Holding force F_{max} maximum	2,600 N
Actuator mounted	Outside

Mechanical data - Dimensions

Length of the actuator	60 mm
Width of the actuator	115 mm
Height of the actuator	115 mm
Length of the emergency exit	60 mm
Width of the emergency exit	115 mm
Height of the emergency exit	115 mm

Scope of delivery

Scope of delivery

The safety switch / solenoid interlock and the actuator unit must be ordered separately.: The safety switch / solenoid interlock and the actuator unit must be ordered separately.

Pictures

Product picture (catalogue individual photo)



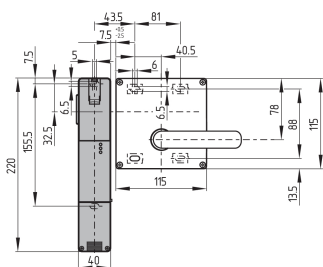
ID: kb-30f19

| 307.9 kB | .jpg | 352.778 x 184.503 mm - 1000 x 523 px - 72 dpi

| 21.3 kB | .png | 74.083 x 38.806 mm - 210 x 110 px - 72 dpi

| 33.7 kB | .jpg | 123.472 x 64.558 mm - 350 x 183 px - 72 dpi

Dimensional drawing basic component

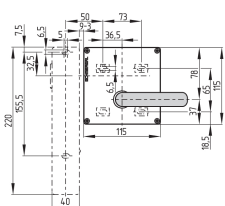


ID: 1azm2m37

| 134.9 kB | .jpg | 352.778 x 289.278 mm - 1000 x 820 px - 72 dpi

| 3.9 kB | .png | 74.083 x 60.678 mm - 210 x 172 px - 72 dpi

Dimensional drawing basic component



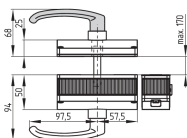
ID: 1azm2g03

| 21.7 kB | .swf |

| 4.0 kB | .png | 74.083 x 51.506 mm - 210 x 146 px - 72 dpi

| 102.7 kB | .jpg | 352.778 x 245.181 mm - 1000 x 695 px - 72 dpi

Dimensional drawing actuator



ID: 1azm2b12

| 6.8 kB | .png | 74.083 x 51.506 mm - 210 x 146 px - 72 dpi

| 80.8 kB | .jpg | 352.778 x 245.181 mm - 1000 x 695 px - 72 dpi

Product in the environment (application)



ID: kazm2f61

| 1.3 MB | .jpg | 352.778 x 494.947 mm - 1000 x 1403 px - 72 dpi

| 358.1 kB | .png | 35.645 x 50.038 mm - 421 x 591 px - 300 dpi

| 20.7 kB | .jpg | 106.892 x 149.931 mm - 303 x 425 px - 72 dpi

K.A. Schmersal GmbH & Co. KG, Möddinghofe 30, 42279 Wuppertal

The details and data referred to have been carefully checked. Images may diverge from original. Further technical data can be found in the manual. Technical amendments and errors possible.

Generated on: 29/11/2024, 14:14