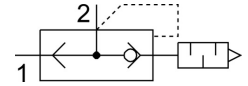


Quick exhaust valve SEU-1/4

Part number: 6753

FESTO



Data sheet

| Feature | Value |
|---|--|
| Valve function | Quick exhaust |
| Selection of additional functions | With silencer |
| Pneumatic connection, port 1 | G1/4 |
| Pneumatic connection, port 2 | G1/4 |
| Type of mounting | Screw-in |
| Standard nominal flow rate, exhaust 0.6-0.5 MPa (6-5 bar, 87-72.5 psi) | 1100 l/min |
| Standard nominal flow rate, exhaust 0.6-0 MPa (6-0 bar, 87-0 psi) | 2300 l/min |
| Standard nominal flow rate, air flow 0.6-0.5 MPa (6-5 bar, 87-72.5 psi) | 960 l/min |
| Operating pressure | 0.5 bar ... 10 bar |
| Ambient temperature | -20 °C ... 75 °C |
| Material housing | Die-cast zinc |
| Operating medium | Compressed air to ISO 8573-1:2010 [7:-:-] |
| Nominal size | 7 mm |
| Mounting position | optional |
| Symbol | 00991460 |
| Note on operating and pilot medium | Lubricated operation possible (in which case lubricated operation will always be required) |
| LABS (PWIS) conformity | VDMA24364-B1/B2-L |
| Media temperature | -20 °C ... 75 °C |
| Sound pressure level | 95 dB(A) |
| Product weight | 120 g |
| Material seals | NBR |