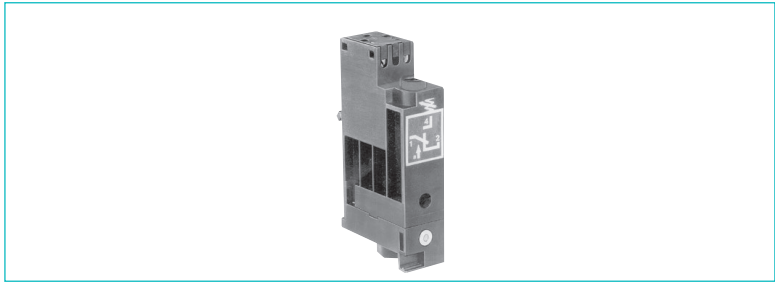


Pressure switches - vacuum (electrical output)

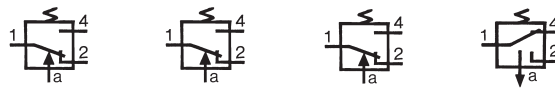


- › Conform to the Low Voltage Directive
- › Can be used without enclosure according to IEC 664-1 pollution group III

Part numbers

Pressure and vacuum switches	81 513 552	81 513 502	81 513 501	81 513 522
Mounting	DIN rail	DIN rail	DIN rail	DIN rail
Actuators	Pressure	Pressure	Low pressure	Vacuum
Manual override	with	without	without	without

Symbol



Characteristics

Pneumatic connection	Push-in connection for semi-rigid tubing (NFE 49100) Tapped BSP via connector	mm	Ø 4 ext.	Ø 4 ext.	Ø 4 ext.	Ø 4 ext.
Protection	IEC 529		IP 20	IP 20	IP 20	IP 20
Permissible fluid: air, inert gases and liquids			•	•	•	•
Adjustment of switching pressure (* adjusted to 0.3)	bar		2 → 8	2 → 8	0.3 → 1.2 *	-0.3 → -0.8
Hysteresis	bar		0.5	0.5	—	—
at 1 bar	bar		0.6	0.6	—	—
at 2 bars	bar		0.8	0.8	—	—
at 4 bars	bar		1	1	—	—
at 6 bars	bar		—	—	•	—
max. 200 mb			—	—	—	•
max. 250 mb			—	—	—	—
Pressure to break			—	—	—	—
Mechanical life (operations)			10 ⁶	10 ⁶	10 ⁶	10 ⁶
Contact rating (V resistive)			5A - 220-230 V	5A - 220-230 V	5A - 220-230 V	5A - 220-230 V
Wire cross-section	mm ²		0.75	0.75	0.75	0.75
Operating temperature	°C		-10 → +70	-10 → +70	-10 → +70	-10 → +70
Weight	g		48	46	46	46
Standard electrical contact			V4 83 170 4 W2	V4 83 170 4 W2	V4 83 170 4 W2	V4 83 170 4 W2
UL and cUL approval			MH15213 (R)	MH15213 (R)	MH15213 (R)	MH15213 (R)

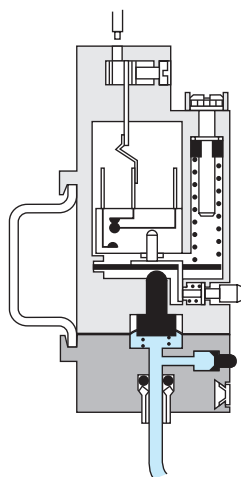
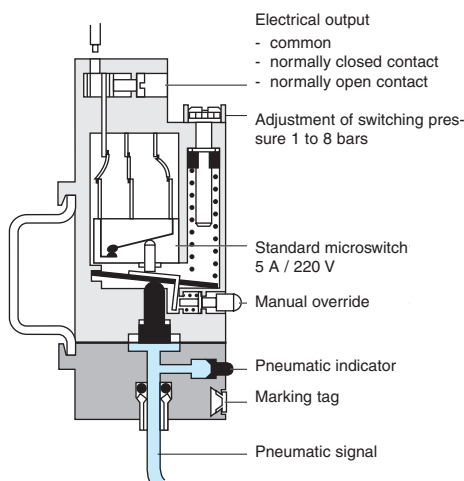
Operation

Pressure operated

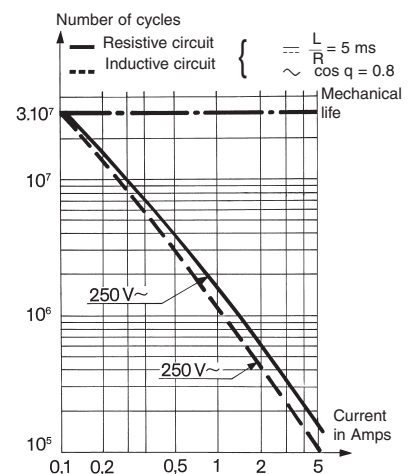
Vacuum operated

Electrical life

(Crouzet microswitch "V4" ref 83 170 4-1-W2)



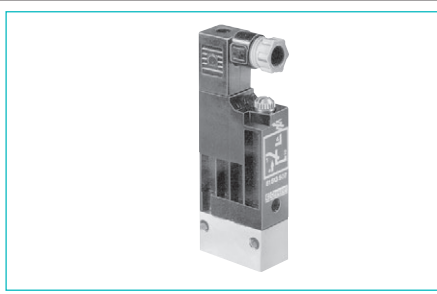
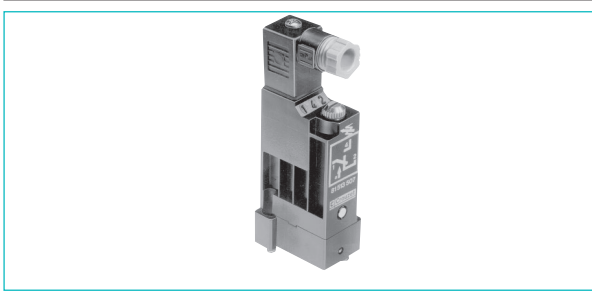
For continuous vacuum applications, please consult us.



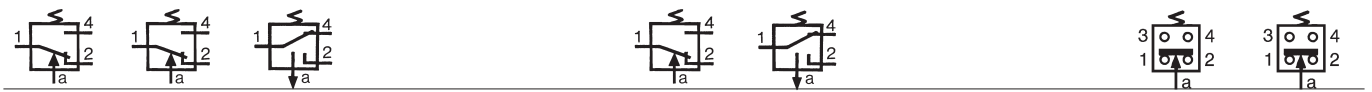
Other information

On request :

- Microswitch V4 ref. 83 170 0 | W2 high current
- Microswitch V4 ref. 83 170 9 | W2 low current



81 513 516	81 513 510	81 513 527	81 513 533	81 513 523	81 509 080	81 509 085
Base mounted page 4/14	Base mounted page 4/14	Base mounted page 4/14	2 screws M4	2 screws M4	Base mounted page 4/14	Base mounted page 4/14
Pressure without	Pressure with	Vacuum without	Pressure without	Vacuum without	Pressure without	Pressure with



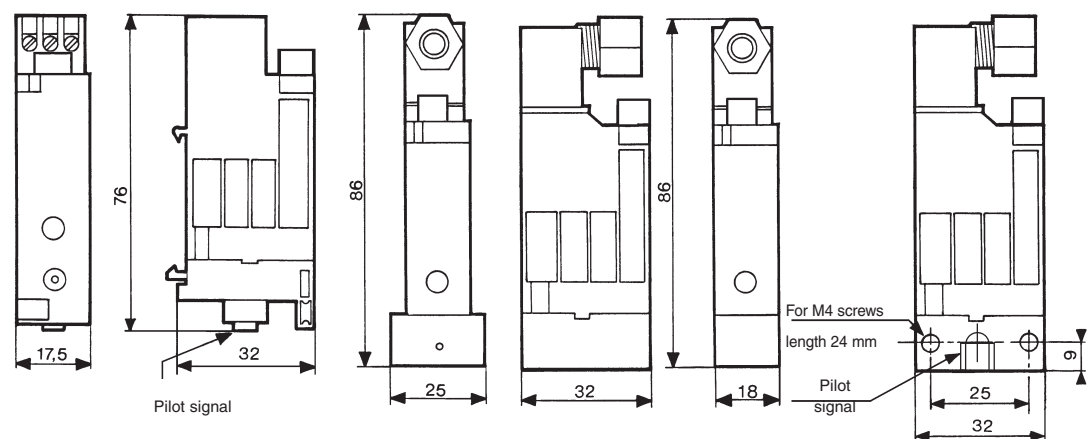
Ø 4 ext.	Ø 4 ext.	Ø 4 ext.	—	1/8 BSP	1/8 BSP	—	—
IP 54	IP 54	IP 54	—	IP 54	IP 54	Via sub-base IP 54	Via sub-base IP 54
•	•	•	—	•	•	•	•
2 → 8	2 → 8	-0.3 → -0.9	—	2 → 8	-0.3 → -0.8	1.4 ± 0.5	1.4 ± 0.5
0.5	0.5	—	—	0.5	—	—	—
0.6	0.6	—	—	0.6	—	—	—
0.8	0.8	—	—	0.8	—	—	—
1	1	—	—	1	—	—	—
—	—	•	—	—	•	—	—
—	—	—	—	—	—	0.6 ± 0.2	0.6 ± 0.2
10 ^e	10 ^e	10 ^e	—	10 ^e	10 ^e	10 ^e	10 ^e
5A - 220-230 V	5A - 220-230 V	5A - 220-230 V	—	5A - 220-230 V	5A - 220-230 V	5A - 220-230 V	5A - 220-230 V
0.75	0.75	0.75	—	0.75	0.75	1.5	1.5
-10 → +70	-10 → +70	-10 → +70	—	-10 → +70	-10 → +70	-10 → +70	-10 → +70
56	58	56	—	65	65	80	80
V4 83 170 4 I W2	V4 83 170 4 I W2	V4 83 170 4 I W2	—	V4 83 170 4 I W2	V4 83 170 4 I W2	83 133 004	83 133 004
MH15213 (R)	MH15213 (R)	MH15213 (R)	—	MH15213 (R)	MH15213 (R)	—	—

Electrical connections
 81 513 501 - 81 513 502
 81 513 522 - 81 513 552

Dimensions
 81 513 552 - 81 513 502
 81 513 501 - 81 513 522

Pressure switch with connector
 81 513 516 - 81 513 510
 81 513 527

81 516 082
 81 513 533
 81 513 523



81 509 080 - 81 509 085

