

Instrumentation Couplings

A-LOK® and CPI™ Series

Features:

- Simple push-pull action to connect and disconnect lines—no tools required
- Reliable, leak-tight O-ring seals for vacuum or pressure systems
- Couplers and nipples are available valved or unvalved. Valves automatically open when connected and shut off when disconnected to minimize the loss of liquids or gases
- Positive valve stops prevent flow checking
- Valve guide positively aligns valve with seat to prevent leakage
- A-LOK® and CPI™ Series couplers and valved nipples are 100% factory leak tested to 1×10^{-3} cc/s
- Durable ball-locking mechanism assures reliable connection while distributing the load and providing alignment and swiveling action

Specifications:

- **Vacuum Rating:** Parker A-LOK® and CPI™ Series will handle vacuums up to 50 millitorr or .05 mm of Hg absolute pressure

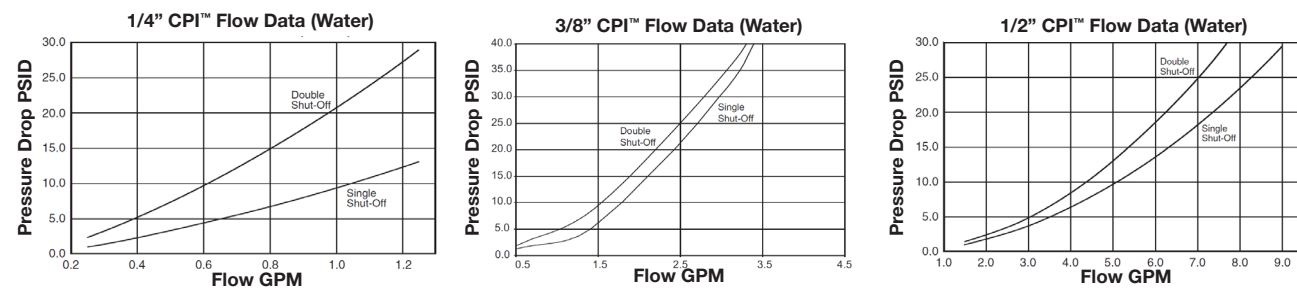
Rated Working Pressure (PSI)

Body Size	1/4" (6 mm)	3/8" (10 mm)	1/2" (12 mm)
Connected	3000	1500	750
Disconnected	3000	1500	750
Connected Under Pressure	250	250	250

Materials of Construction - Stainless Steel Products

Machined Parts	Stainless Steel AISI type 316
Springs	Stainless Steel AISI type 302
Locking Balls	Stainless Steel AISI type 302
Retaining Rings	Stainless Steel AISI type 302
Seals	Fluorocarbon is standard - other materials available

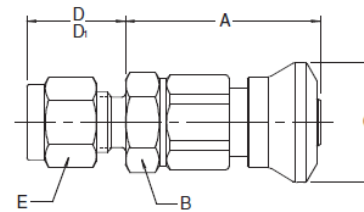
CPI™ Series Performance



Instrumentation Couplings

A-LOK® and CPI™ Series - Couplings

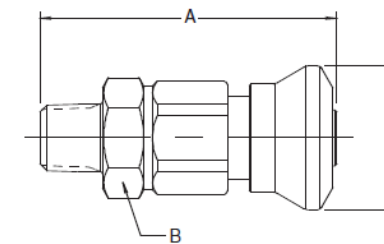
Tube Ends



Body Size	Part No.	Tube Size	A	Hex B	Dia. C	D	D1	Hex E
1/4"	2A-Q4CY*-SSP	1/8"	1.44"	.62"	.86"	.61"	.60"	.44"
1/4"	4A-Q4CY*-SSP	1/4"	1.41"	.62"	.86"	.70"	.70"	.56"
6 mm	M6A-Q4CY*-SSP	6 mm	1.41"	.62"	.86"	.70"	.70"	.56"
3/8"	6A-Q6CY*-SSP	3/8"	1.63"	.75"	.98"	.78"	.76"	.69"
10 mm	M10A-Q6CY*-SSP	10 mm	1.63"	.75"	.98"	.78"	.76"	.69"
1/2"	8A-Q8CY*-SSP	1/2"	2.03"	.94"	1.17"	.91"	.87"	.88"
12 mm	M12A-Q8CY*-SSP	12 mm	2.03"	.94"	1.17"	.91"	.87"	.88"

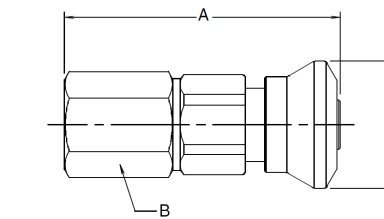
For CPI replace designator 'A' (A-LOK®) with Z

Male Pipe



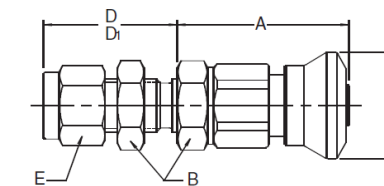
Body Size	Part No.	Thread Size / NPT	A	Hex B	Dia. C
1/4"	2M-Q4CY*-SSP	1/8"	1.78"	.62"	.86"
1/4"	4M-Q4CY*-SSP	1/4"	1.97"	.62"	.86"
3/8"	4M-Q6CY*-SSP	1/4"	2.19"	.75"	.98"
3/8"	6M-Q6CY*-SSP	3/8"	2.19"	.75"	.98"
1/2"	8M-Q8CY*-SSP	1/2"	2.78"	.94"	1.17"

Female Pipe



Body Size	Part No.	Thread Size / NPT	A	Hex B	Dia. C
1/4"	2F-Q4CY*-SSP	1/8"	1.91"	.62"	.86"
1/4"	4F-Q4CY*-SSP	1/4"	2.22"	.75"	.86"
3/8"	4F-Q6CY*-SSP	1/4"	2.36"	.75"	.98"
3/8"	6F-Q6CY*-SSP	3/8"	2.38"	.88"	.98"
1/2"	8F-Q8CY*-SSP	1/2"	3.03"	1.06"	1.17"

Bulkhead



Body Size	Part No.	Tube Size	A	Hex B	Dia. C	D	D1	Hex E
1/4"	4AH-Q4CY*-SSP	1/4"	1.41"	.62"	.86"	1.09"	1.09"	.56"
3/8"	6AH-Q6CY*-SSP	3/8"	1.63"	.75"	.98"	1.20"	1.18"	.69"
1/2"	8AH-Q8CY*-SSP	1/2"	2.03"	.94"	1.17"	1.38"	1.34"	.88"