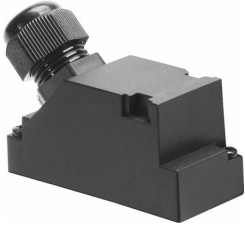


Connecting cable KMP3-25P-16-10

Part number: 18625

FESTO



 General operating condition

Data sheet

| Feature | Value |
|--|----------------------------|
| Based on standard | DIN 41652 |
| Cable designation | With accessories |
| Frequency of connection | 50 |
| Product weight | 1303 g |
| Electrical connection 1, function | Field device side |
| Electrical connection 1, design | Angular |
| Electrical connection 1, connection type | Socket |
| Electrical connection 1, cable outlet | Angled |
| Electrical connection 1, connector system | Sub-D |
| Electrical connection 1, number of connections/cores | 25 |
| Electrical connection 1, used connections/cores | 18 |
| Electrical connection 1, type of mounting | 2x screw M3 |
| Electrical connection 1, connection pattern | 00995642 |
| Electrical connection 2, function | Controller side |
| Electrical connection 2, connection type | Cable |
| Electrical connection 2, connector system | Open end |
| Electrical connection 2, number of connections/cores | 18 |
| Electrical connection 2, used connections/cores | 18 |
| Operational voltage range DC | 0 V ... 30 V |
| Nominal operating voltage DC | 24 V |
| Current rating at 40° C | 3 A |
| Immunity to surge | 1 kV |
| Cable length | 10 m |
| Cable characteristic | Standard |
| Test conditions cable | Test conditions on request |
| Bending radius, fixed cable | ≥45 mm |
| Bending radius, moving cable | ≥90 mm |
| Cable diameter | 8.5 mm |
| Cable diameter tolerance | ± 0.5 mm |
| Cable structure | 18 x 0.34 mm ² |
| Nominal cross section conductor | 0.34 mm ² |
| Wire ends | Cut off bluntly |
| Degree of protection | IP65 |
| Note on degree of protection | In assembled state |
| Ambient temperature | -25 °C ... 70 °C |
| Ambient temperature with moving cable | -5 °C ... 70 °C |

| Feature | Value |
|--|--------------------------------------|
| Storage temperature | -25 °C ... 75 °C |
| CE mark (see declaration of conformity) | In accordance with EU RoHS Directive |
| CE marking (see declaration of conformity) | To UK RoHS instructions |
| LABS (PWIS) conformity | VDMA24364-B2-L |
| Note on materials | RoHS-compliant |
| Pollution degree | 3 |
| Material cable sheath | PVC |
| Cable sheath colour | grey |
| Material housing | PA |
| Material seals | NBR |
| Material electrical contact | Gold-plated copper alloy |