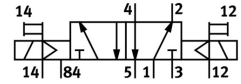
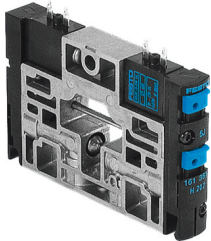


Solenoid valve CPV14-M1H-5JS-1/8

Part number: 161361

FESTO



[PDF General operating condition](#)

Data sheet

| Feature | Value |
|--|--|
| Valve function | 5/2 double solenoid |
| Type of actuation | Electric |
| Valve size | 14 mm |
| Standard nominal flow rate | 800 l/min |
| pneumatic working port | G1/8 |
| Operating voltage | 24V DC |
| Operating pressure | -0.09 MPa ... 1 MPa |
| Operating pressure | -0.9 bar ... 10 bar |
| Design | Piston gate valve |
| Degree of protection | IP65 |
| Nominal size | 6 mm |
| Exhaust-air function | Without flow control option |
| Sealing principle | Soft |
| Mounting position | optional |
| Manual override | Detenting Non-detenting |
| Type of piloting | Pilot actuated |
| Pilot air supply | External Internal |
| Flow direction | Non-reversible |
| Symbol | 00991683 |
| lap | Overlap |
| Pilot pressure | 0.3 MPa ... 0.8 MPa |
| Pilot pressure | 3 bar ... 8 bar |
| b value | 0.42 |
| C value | 3.2 l/sbar |
| Switching time reversal | 12 ms |
| Duty cycle | 100% in conjunction with holding current reduction |
| Electrical power consumption | 0.65 W |
| Max. positive test pulse with 0 signal | 1400 µs |
| Max. negative test pulse with 1 signal | 400 µs |
| Operating medium | Compressed air to ISO 8573-1:2010 [7:4:4] |
| Note on operating and pilot medium | Lubricated operation possible (in which case lubricated operation will always be required) |
| Vibration resistance | Transport application test with severity level 2 to FN 942017-4 and EN 60068-2-6 |
| Shock resistance | Shock test with severity level 2 to FN 942017-5 and EN 60068-2-27 |

| Feature | Value |
|-----------------------------------|--|
| Corrosion resistance class CRC | 2 - Moderate corrosion stress |
| LABS (PWIS) conformity | VDMA24364-B1/B2-L |
| Storage temperature | -20 °C ... 40 °C |
| Media temperature | -5 °C ... 50 °C |
| Ambient temperature | -5 °C ... 50 °C |
| Product weight | 120 g |
| Type of mounting | With through-hole |
| Pilot air port 12/14 | Common line |
| Pilot exhaust port 82/84 | Common line |
| Pneumatic connection, port 1 | Common line |
| Pneumatic connection, port 2 | G1/8 |
| Pneumatic connection 3/5 combined | Common line |
| Pneumatic connection, port 4 | G1/8 |
| Note on materials | RoHS-compliant |
| Material seals | HNBR NBR |
| Material housing | Die-cast aluminium Brass POM PPS Steel |